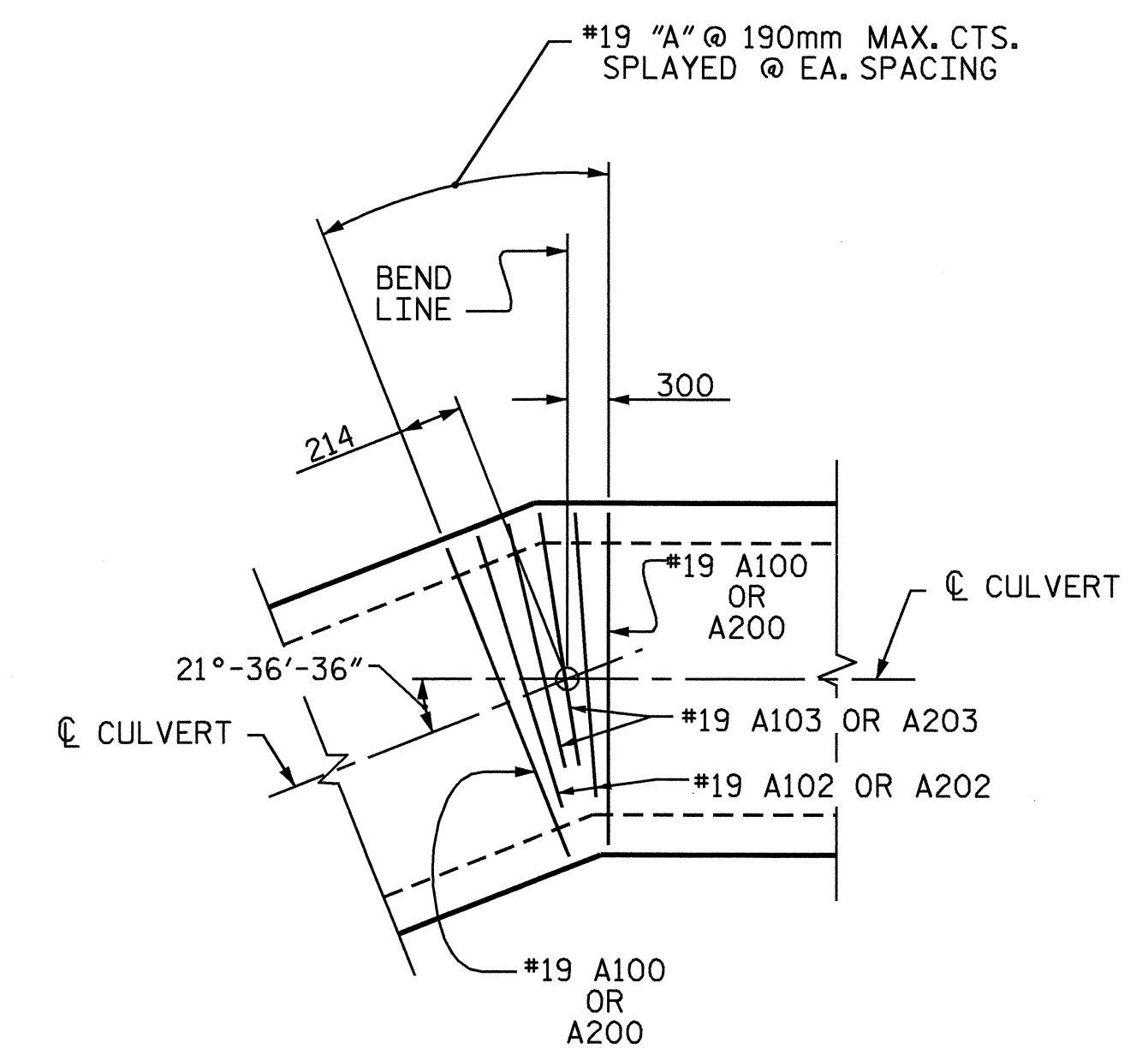
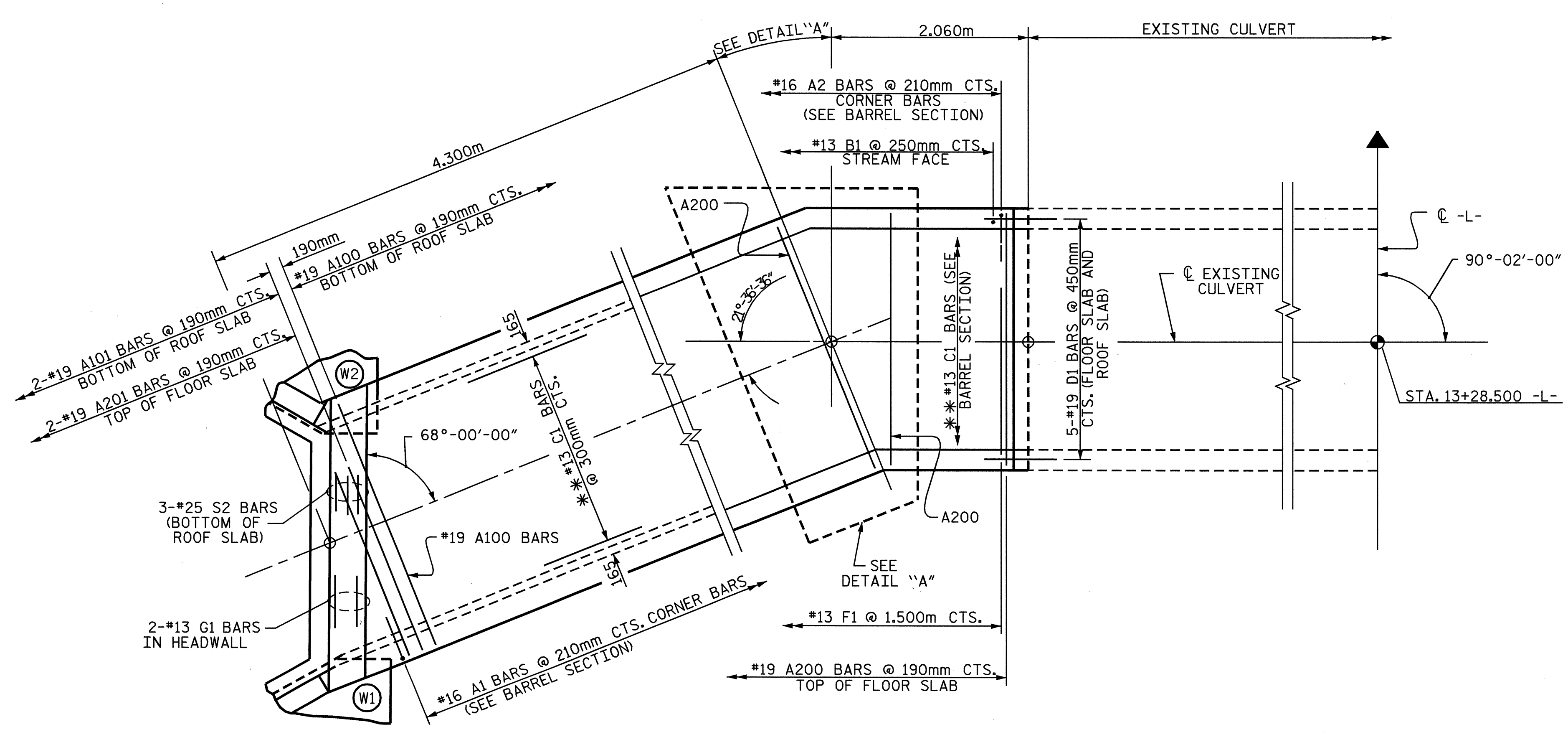


**CULVERT SECTION NORMAL TO ROADWAY**



**DETAIL "A"**



**PART PLAN - ROOF SLAB**

**PART PLAN - FLOOR SLAB**

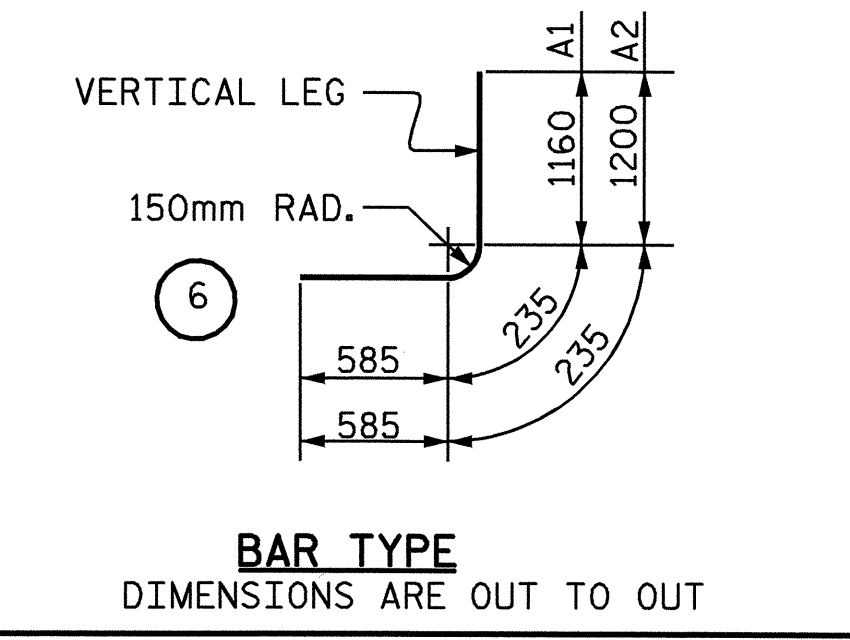
\*\*FIELD BEND #13 C1 BARS AS REQUIRED

**BILL OF MATERIAL LEFT EXTENSION**

BAR	NO.	SIZE	TYPE	LENGTH	WEIGHT
A100	30	19	STR	2080	139
A101	2	19	STR	1060	5
A102	2	19	STR	1900	8
A103	2	19	STR	1560	7
A200	30	19	STR	2080	139
A201	2	19	STR	1060	5
A202	2	19	STR	1900	8
A203	2	19	STR	1560	7
A1	62	16	6	1980	191
A2	62	16	6	2020	194
B1	54	13	STR	2200	118
C1	38	13	STR	6260	236
D1	18	19	STR	760	31
G1	2	13	STR	2260	4
S2	6	25	STR	2260	54
F1	6	13	STR	1300	8
<b>REINFORCING STEEL</b>					<b>1154</b>

**SPLICE LENGTH CHART**

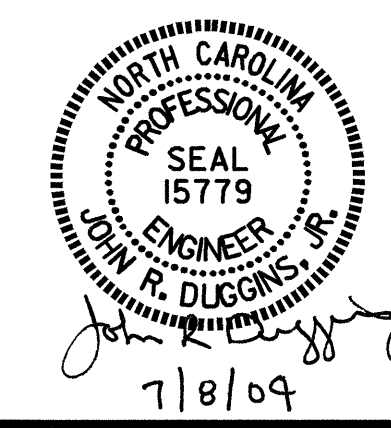
BAR	SIZE	SPLICE LENGTH
B1	13	540
C1	13	590



PROJECT NO. R-2610A  
CHATHAM COUNTY  
 STATION: 13+28.500 -L-

SHEET 3 OF 6

STATE OF NORTH CAROLINA  
 DEPARTMENT OF TRANSPORTATION  
 RALEIGH  
**SINGLE BARREL  
 1.830m X 1.830m  
 CONCRETE BOX CULVERT  
 LEFT EXTENSION**



REVISIONS						SHEET NO.
NO.	BY:	DATE:	NO.	BY:	DATE:	C-3
1			3			TOTAL SHEETS
2			4			18

DRAWN BY: J. LAMBERT DATE: 10/03  
 CHECKED BY: S. PEARCE DATE: 11/03