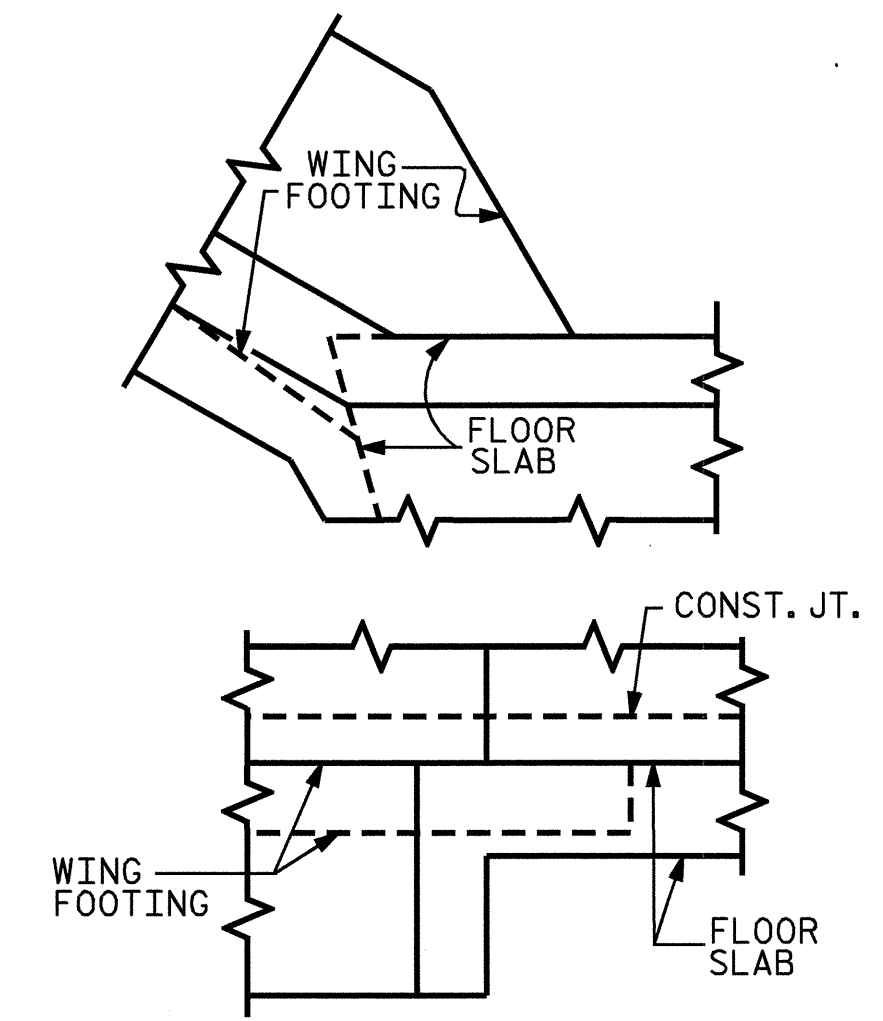


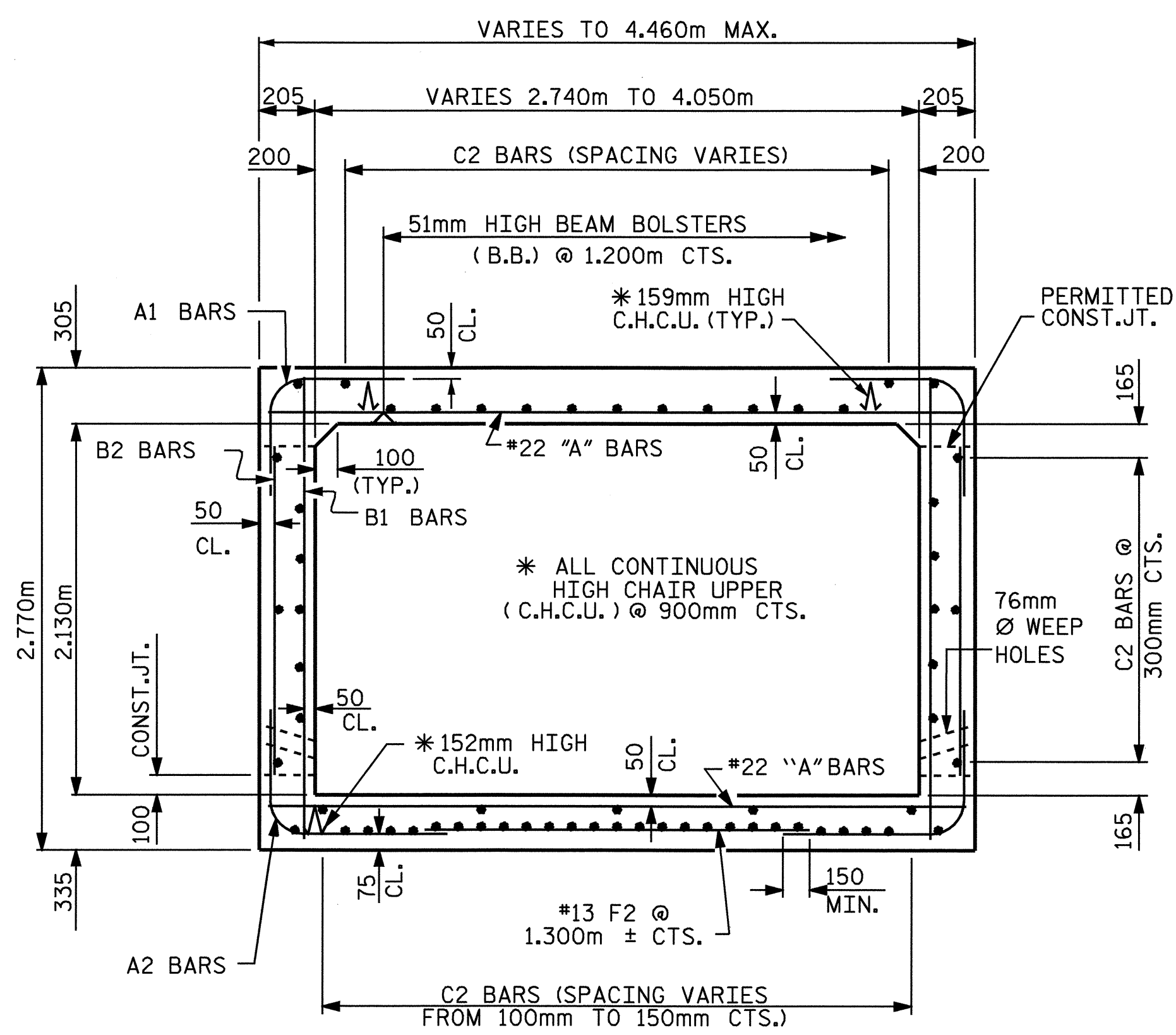
SECTION A-A

SECTION THRU BARREL

THERE ARE 50 #13 C1 BARS IN SECTION OF BARREL



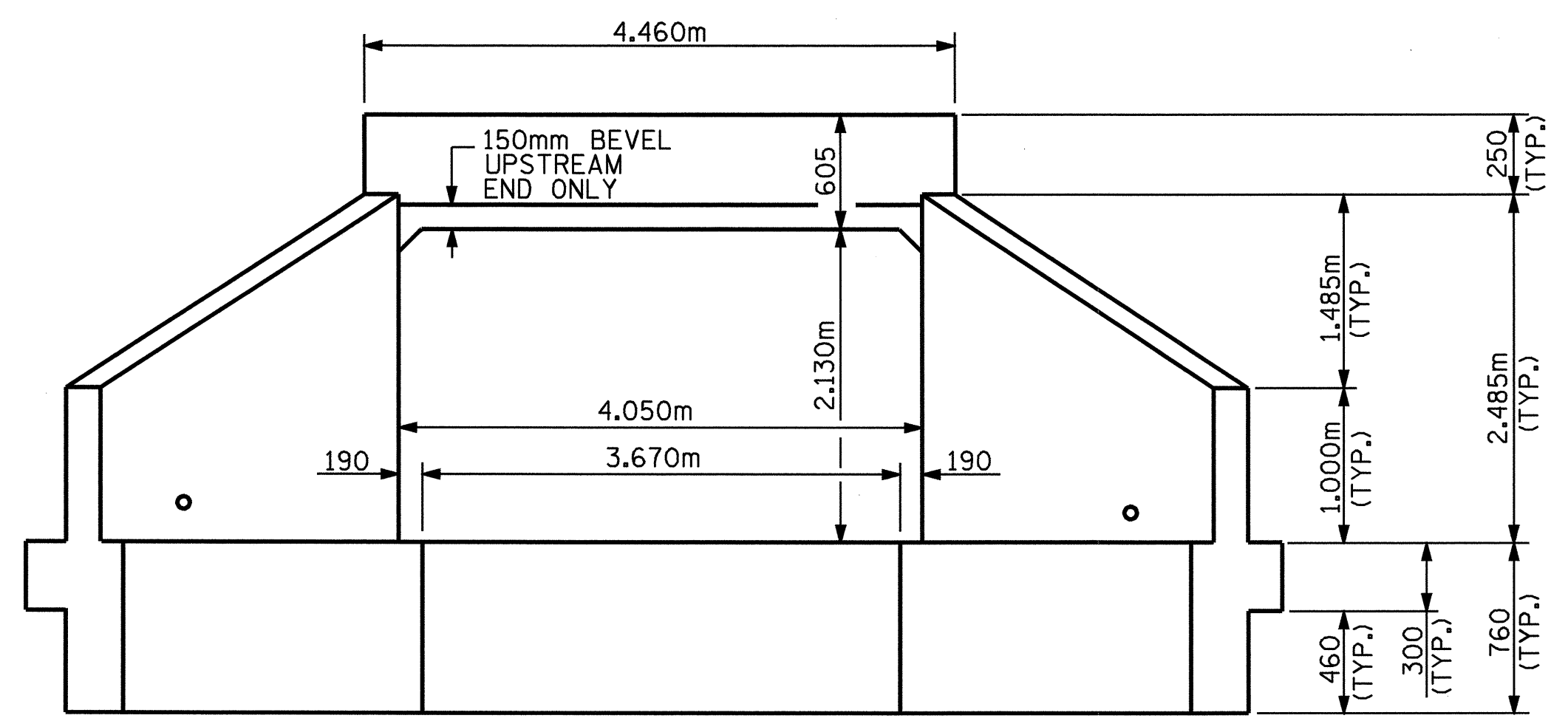
DETAIL
CONNECTION OF WING FOOTING
AND FLOOR SLAB WHEN SLAB
IS THICKER THAN FOOTING



SECTION B-B

SIDE TAPERED INLET END

THERE ARE 63 #13 C2 BARS IN SECTION OF BARREL



INLET END ELEVATION

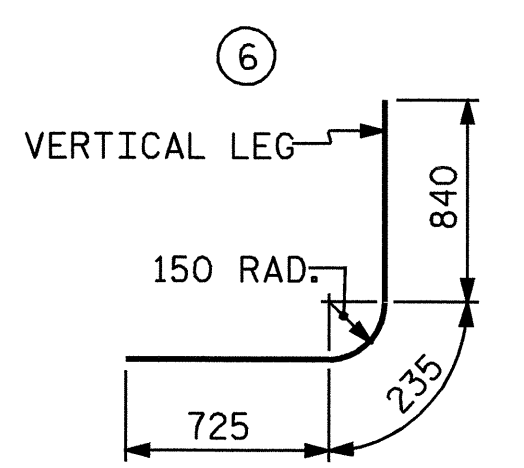
(NORMAL TO SKEW)

BILL OF MATERIAL
FOR BARREL AND TAPER

BAR NO.	SIZE	TYPE	LENGTH	WEIGHT	BAR NO.	SIZE	TYPE	LENGTH	WEIGHT		
A1	262	19	6	1800	1054	B1	184	13	STR	2600	476
A2	262	19	6	1800	1054	B2	262	13	STR	1900	495
A100	146	22	STR	3000	1332	C1	200	13	STR	6980	1388
A151	2	22	STR	2240	14	C2	63	13	STR	2640	165
A152	2	22	STR	1540	9						
A153	2	22	STR	860	5	D1	26	19	STR	760	44
A154	2	22	STR	3000	18						
A155	2	22	STR	3140	19	G1	2	13	STR	4200	8
A156	2	22	STR	3300	20						
A157	2	22	STR	3460	21	S1	6	25	STR	3300	79
A158	2	22	STR	3600	22						
A159	2	22	STR	3760	23	F1	20	13	STR	1900	38
A160	2	22	STR	3900	24	F2	3	13	STR	3100	9
A161	2	22	STR	4060	25						
A162	2	22	STR	4200	26						
A163	1	22	STR	2640	8						
A164	2	22	STR	1640	10						
									TOTAL	7962 kg	

SPLICE LENGTH CHART

BAR	SIZE	SPLICE LENGTH
B1	13	540
C1	13	590 MIN.



BAR TYPE

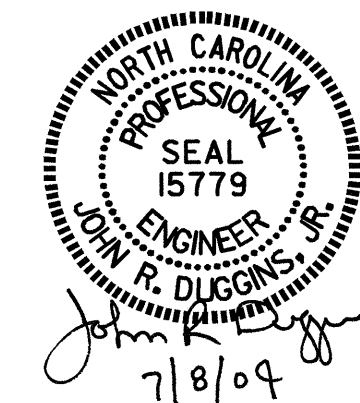
DIMENSIONS ARE OUT TO OUT

PROJECT NO. R-2610A
CHATHAM COUNTY
STATION: 52+75.440 -L-

SHEET 3 OF 6

STATE OF NORTH CAROLINA
DEPARTMENT OF TRANSPORTATION
RALEIGH

SINGLE
2.740m X 2.130m
CONCRETE BOX
CULVERT EXTENSION



REVISIONS						SHEET NO.
NO.	BY:	DATE:	NO.	BY:	DATE:	C-9
1			3			TOTAL SHEETS
2			4			18

DRAWN BY: J. LAMBERT DATE: 4/03
CHECKED BY: S. PEARCE DATE: 12/03