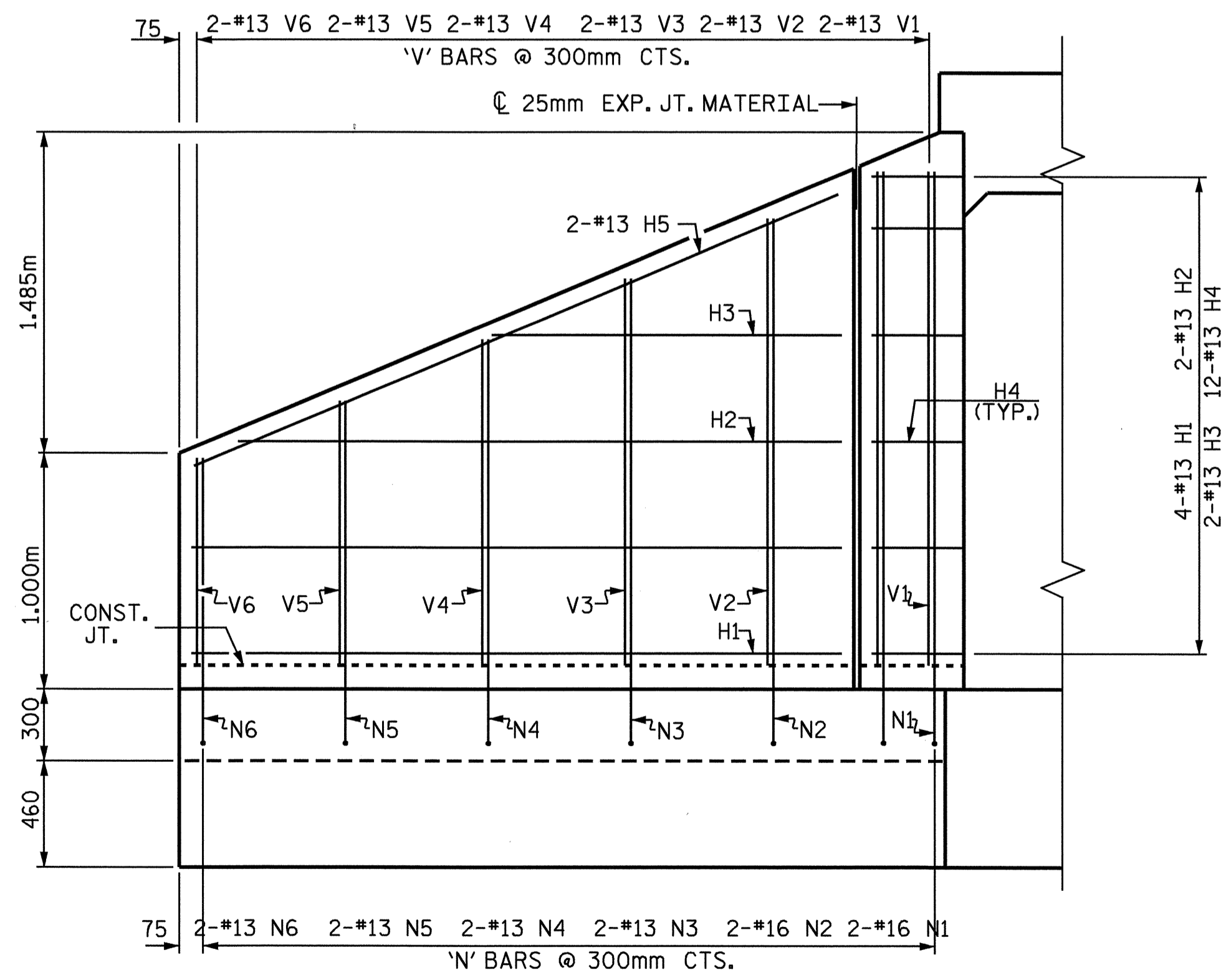
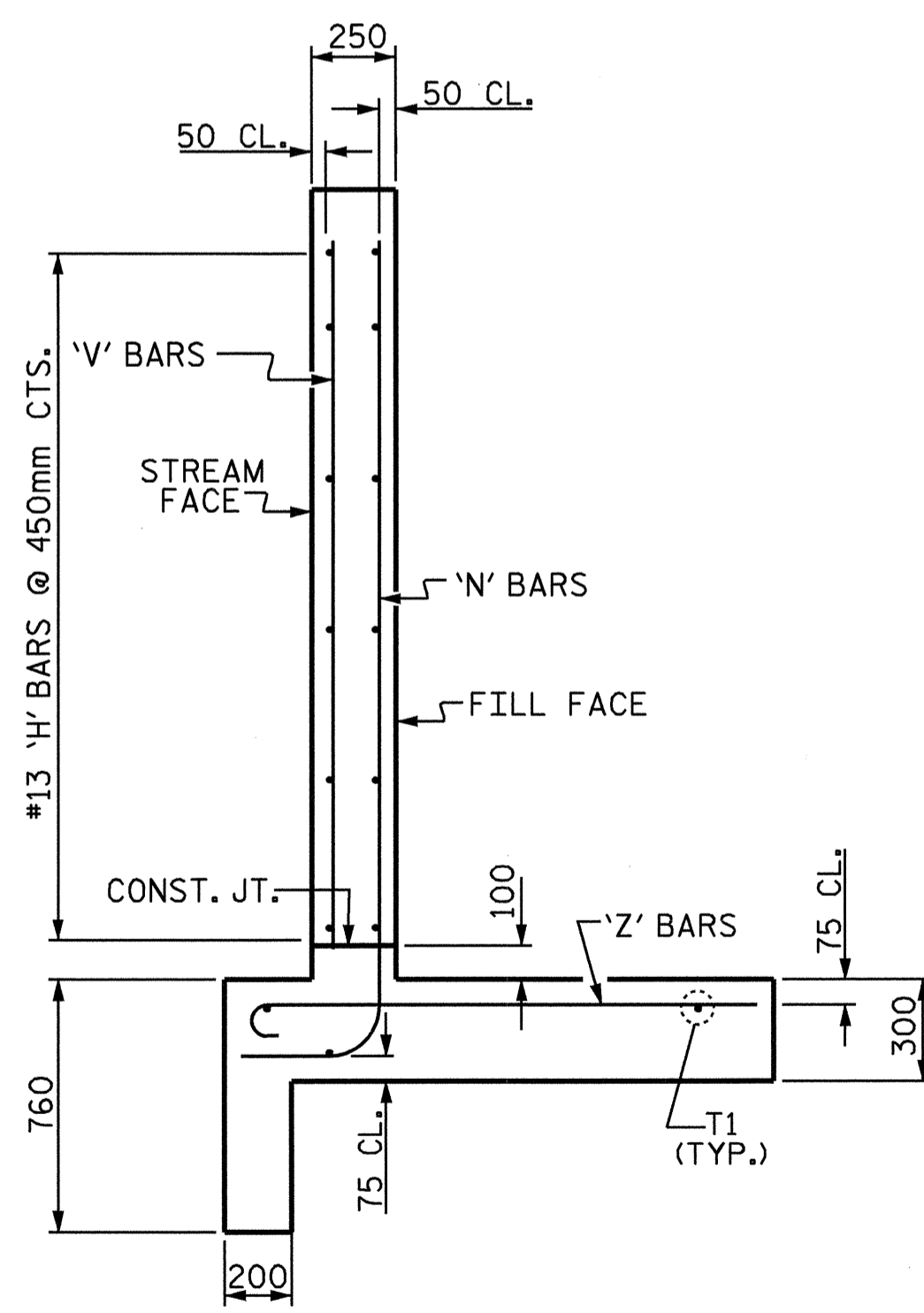


PLAN

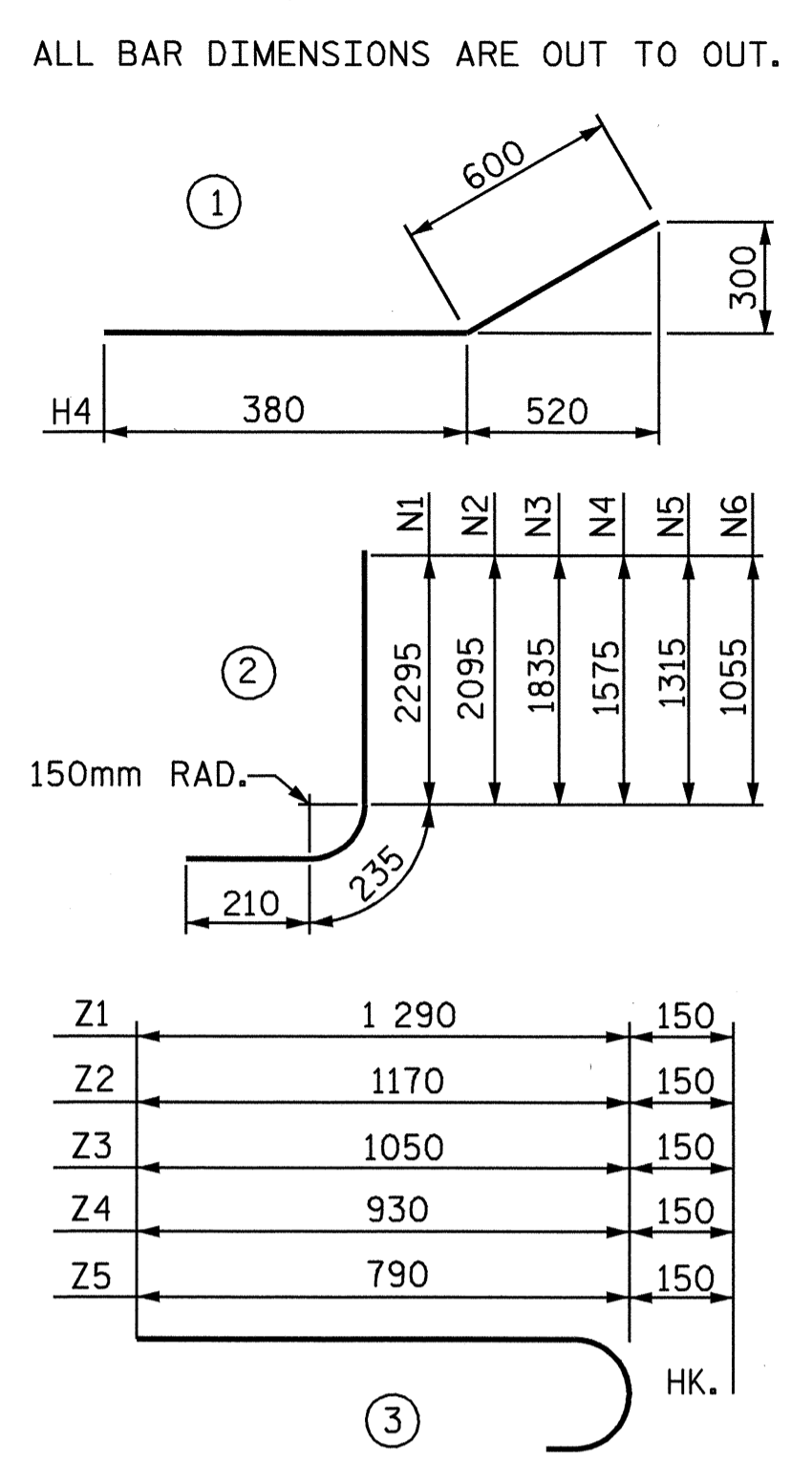


ELEVATION



TYPICAL WING SECTION

BAR TYPES



BILL OF MATERIAL

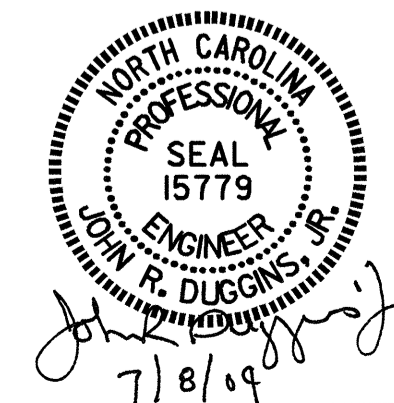
BAR NO.	SIZE	TYPE	LENGTH	WEIGHT
H1	8 13	STR	2740	22
H2	4 13	STR	2540	10
H3	4 13	STR	1520	6
H4	24 13	1	980	23
H5	4 13	STR	2980	12
N1	4 16	2	2740	17
N2	4 16	2	2540	16
N3	4 13	2	2280	9
N4	4 13	2	2020	8
N5	4 13	2	1760	7
N6	4 13	2	1500	6
S1	6 19	STR	1800	24
T1	6 16	STR	3300	31
V1	4 13	STR	2120	8
V2	4 13	STR	1920	8
V3	4 13	STR	1660	7
V4	4 13	STR	1400	6
V5	4 13	STR	1140	5
V6	4 13	STR	880	3
Z1	8 13	3	1440	11
Z2	4 13	3	1320	5
Z3	4 13	3	1200	5
Z4	4 13	3	1080	4
Z5	4 13	3	940	4

REINFORCING STEEL FOR 2 WINGS 257 kg

CLASS A CONCRETE

2 WINGS	6.0	m <sup>3</sup>
1 HEADWALLS	0.5	m <sup>3</sup>
1 END CURTAIN WALL	0.6	m <sup>3</sup>
2 EDGE BEAMS	0.8	m <sup>3</sup>
<b>TOTAL</b>	<b>7.9</b>	<b>m<sup>3</sup></b>

ASSEMBLED BY : J. LAMBERT DATE : 12/03  
 CHECKED BY : S. PEARCE DATE : 12/03  
 DRAWN BY : FPP 06/97  
 CHECKED BY : VAP 06/97



PROJECT NO. R-2610A  
CHATHAM COUNTY  
 STATION: 52+75.440 -L-

SHEET 6 OF 6

STATE OF NORTH CAROLINA  
 DEPARTMENT OF TRANSPORTATION  
 RALEIGH

WINGS FOR  
 CONCRETE BOX CULVERT  
 H = 2.130m SLOPE = 2:1  
 90° SKEW

REVISIONS						SHEET NO.
NO.	BY:	DATE:	NO.	BY:	DATE:	C-12
1			3			TOTAL SHEETS 18
2			4			