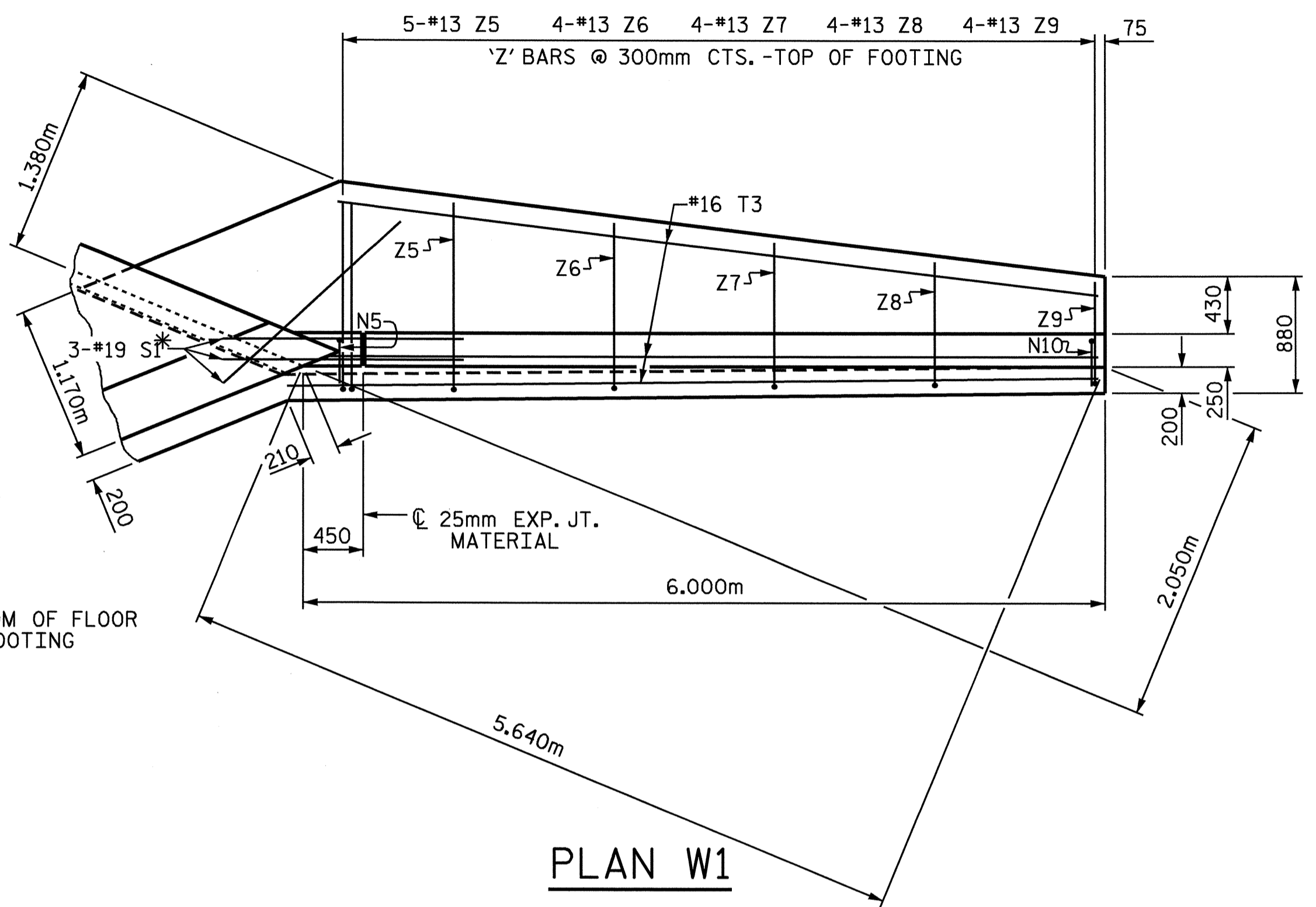
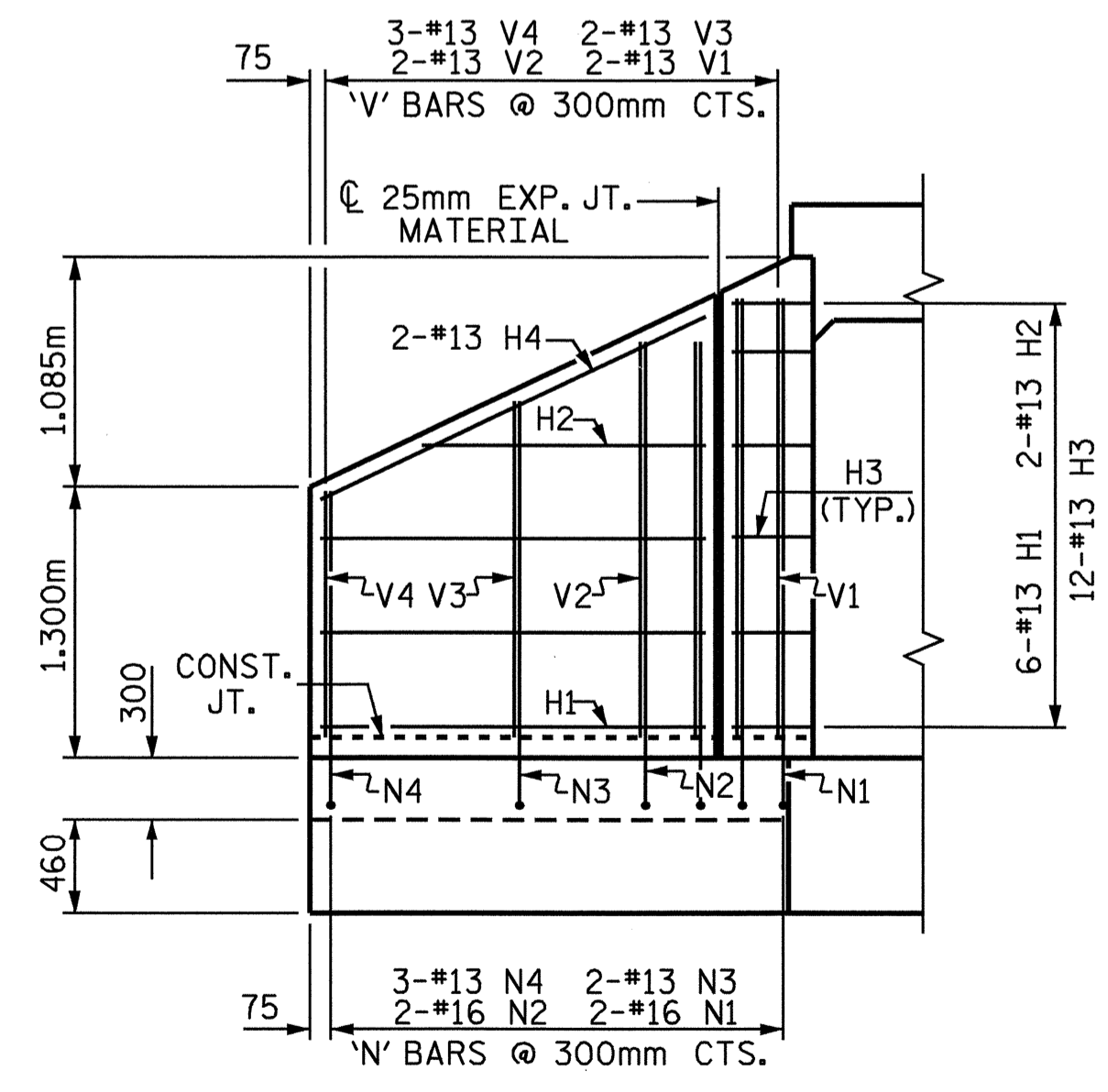


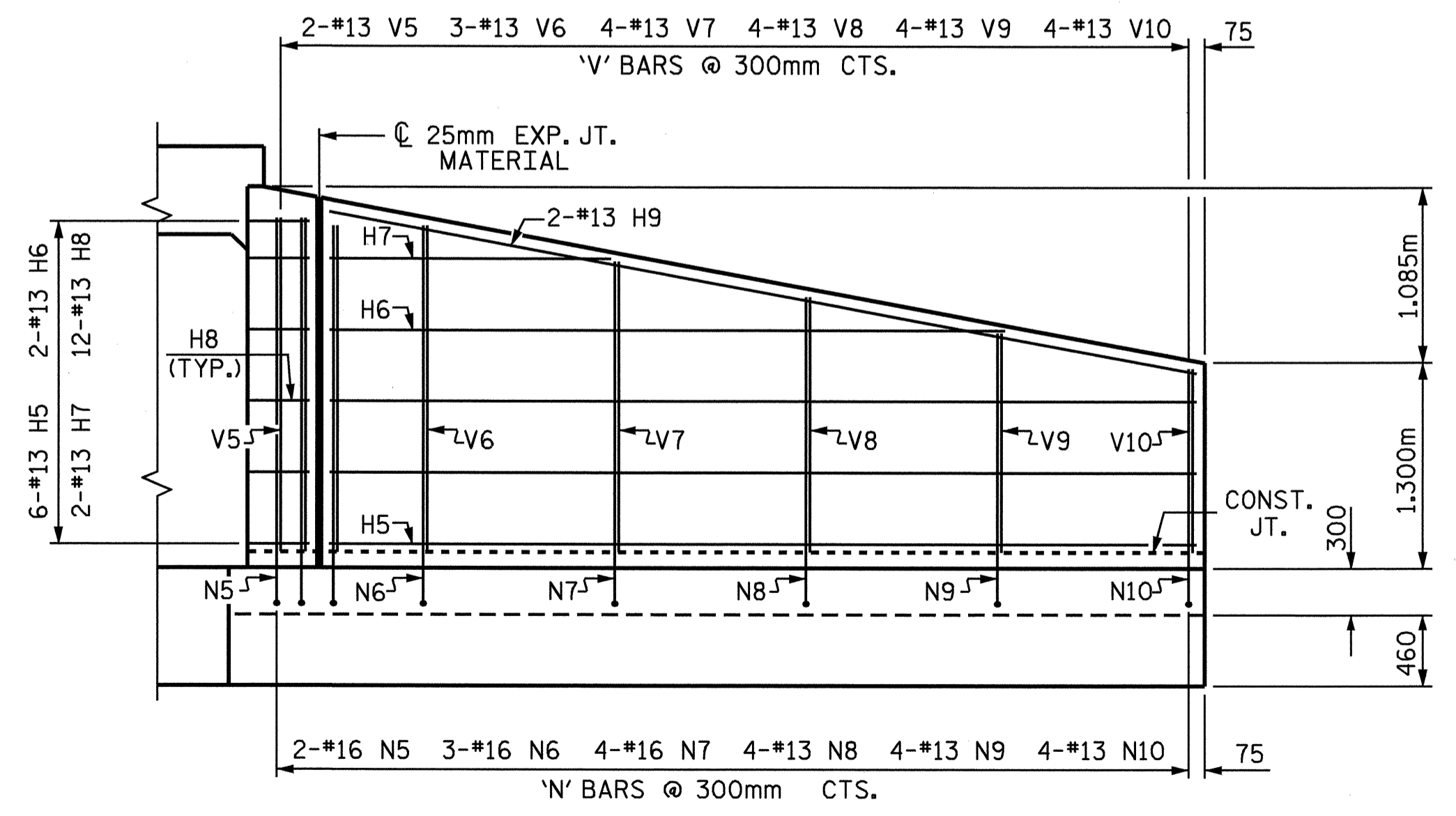
PLAN W2



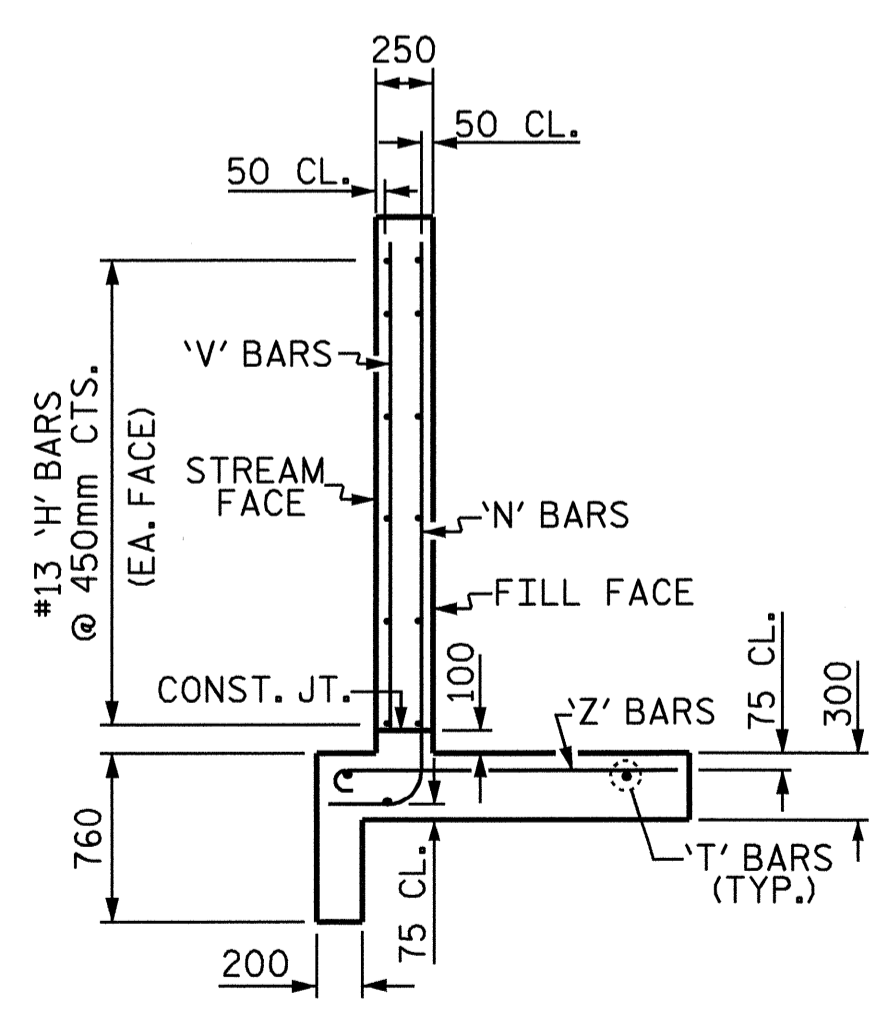
PLAN W1



ELEVATION W2



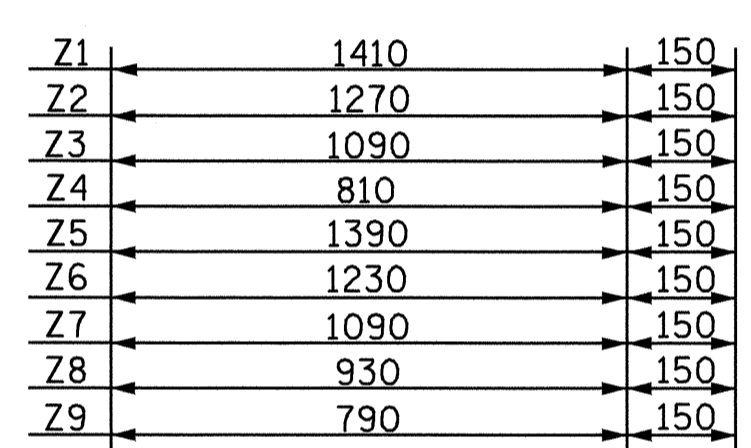
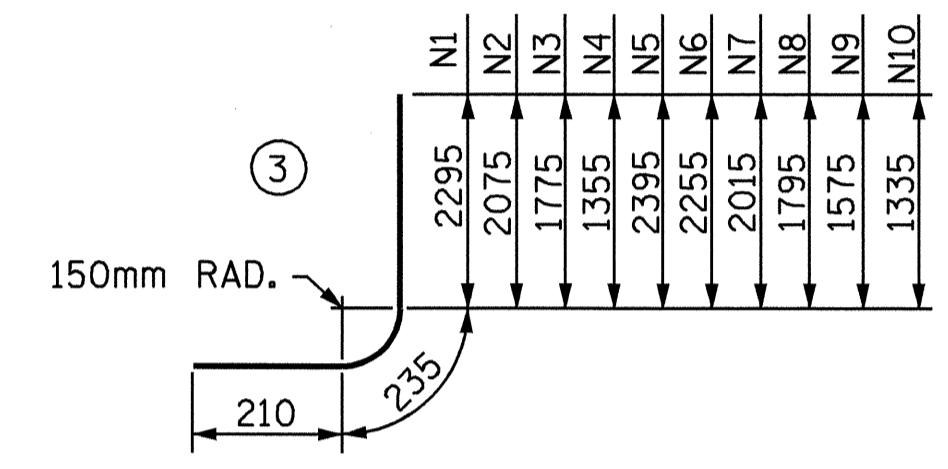
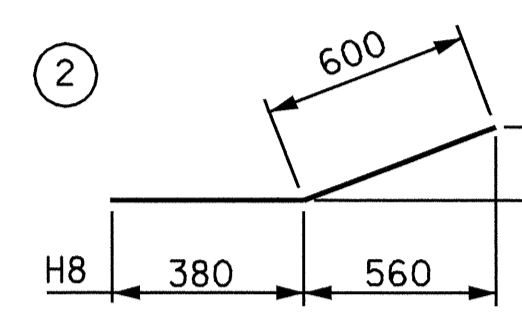
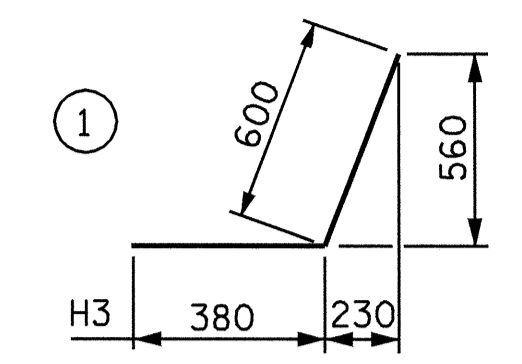
ELEVATION W1



TYPICAL WING SECTION

BAR TYPES

ALL BAR DIMENSIONS ARE OUT TO OUT.

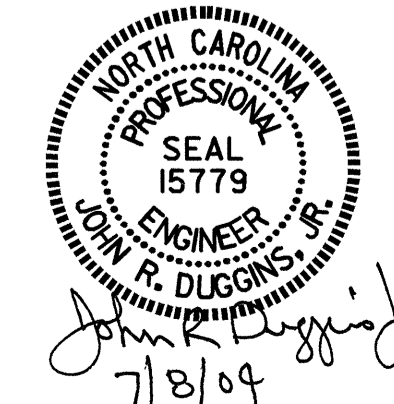


BILL OF MATERIAL

BAR NO.	SIZE	TYPE	LENGTH	WEIGHT
H1	6	13 STR	1840	11
H2	2	13 STR	1340	3
H3	12	13	980	12
H4	2	13 STR	2020	4
H5	6	13 STR	5440	32
H6	2	13 STR	4300	9
H7	2	13 STR	1940	4
H8	12	13 STR	980	12
H9	2	13 STR	5520	11
N1	2	16	2740	9
N2	2	16	2520	8
N3	2	13	2220	4
N4	3	13	1800	5
N5	2	16	2840	9
N6	3	16	2700	13
N7	4	16	2460	15
N8	4	13	2240	9
N9	4	13	2020	8
N10	4	13	1780	7
S1	6	19 STR	1800	24
T1	2	16 STR	2400	7
T2	1	16 STR	2680	4
T3	3	16 STR	6000	28
V1	2	13 STR	2120	4
V2	2	13 STR	1900	4
V3	2	13 STR	1600	3
V4	3	13 STR	1180	4
V5	2	13 STR	2220	4
V6	3	13 STR	2080	6
V7	4	13 STR	1840	7
V8	4	13 STR	1620	6
V9	4	13 STR	1400	6
V10	4	13 STR	1160	5
Z1	2	13	1560	3
Z2	2	13	1420	3
Z3	2	13	1240	2
Z4	3	13	960	3
Z5	5	13	1540	8
Z6	4	13	1380	5
Z7	4	13	1240	5
Z8	4	13	1080	4
Z9	4	13	940	4
REINFORCING STEEL FOR 2 WINGS				334 kg
CLASS A CONCRETE				
2 WINGS				8.3 m <sup>3</sup>
1 HEADWALL				.5 m <sup>3</sup>
1 END CURTAIN WALL				.4 m <sup>3</sup>
2 EDGEBEAMS				.6 m <sup>3</sup>
TOTAL				9.8 m <sup>3</sup>

PROJECT NO. R-2610A  
 CHATHAM COUNTY  
 STATION: 62+33.970 -L-

SHEET 6 OF 6  
 STATE OF NORTH CAROLINA  
 DEPARTMENT OF TRANSPORTATION  
 RALEIGH  
 WINGS FOR  
 CONCRETE BOX CULVERT  
 H = 2.130m SLOPE 2 : 1  
 140° SKEW



ASSEMBLED BY : J. LAMBERT DATE : 10/03  
 CHECKED BY : S. PEARCE DATE : 11/03  
 DRAWN BY : FPP 06/97  
 CHECKED BY : VAP 11/97

FOR WING ORIENTATION, SEE BARREL STANDARD SHEET.

REVISIONS						SHEET NO.
NO.	BY:	DATE:	NO.	BY:	DATE:	
1			3			TOTAL SHEETS
2			4			18