

8/17/99

**-Y4-**  
 PI Sta 10+41.424  
 $\Delta = 13^{\circ} 04' 16.5''$  (LT)  
 L = 74.829  
 T = 37.577  
 R = 328.000  
 SEE SHEET 2E  
 FOR SE

**-Y5-**  
 PI Sta 10+92.898  
 $\Delta = 22^{\circ} 04' 06.0''$  (RT)  
 L = 107.076  
 T = 54.210  
 R = 278.000  
 SEE SHEET 2E  
 FOR SE

**CLEARING AND GRUBBING  
 EROSION CONTROL FOR  
 CONSTRUCTION SHEET 8**

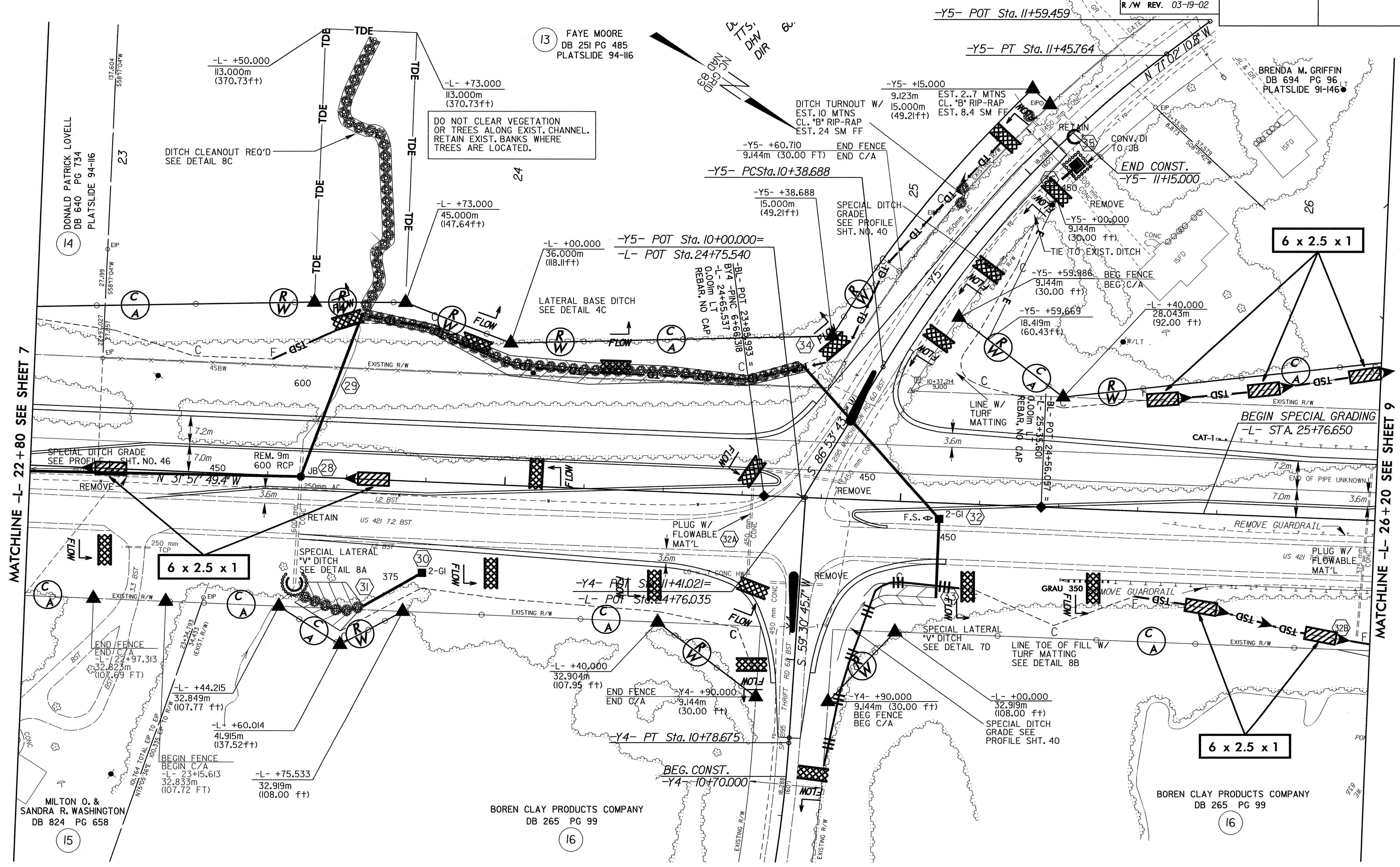
**NOTE:**  
 PLACE TEMPORARY ROCK SEDIMENT DAMS TYPE-B  
 AND TEMPORARY ROCK SILT CHECKS TYPE-A AT  
 DRAINAGE OUTLETS.

SEE SHEET 29 FOR -L- PROFILE  
 SEE SHEET 40 FOR -Y4- & -Y5- PROFILE  
 SEE SHEET 2-E FOR -L-, -Y4-, -Y5-  
 INTERSECTION DETAILS  
 SEE SHEETS 2-H & 2-I FOR DITCH  
 DETAILS  
 SEE SHEETS 46 & 47 FOR DITCH PROFILES  
 SEE SHEET 2-D FOR -L- & -Y3REV-  
 INTERSECTION DETAILS

**METRIC**

CONST. REV.  
 R/W REV. 03-19-02

PROJECT REFERENCE NO. R-2610 A	SHEET NO. EC-8/CONST.8
ROADWAY DESIGN ENGINEER	HYDRAULICS ENGINEER



MATCHLINE -L- 22 + 80 SEE SHEET 7

MATCHLINE -L- 26 + 20 SEE SHEET 9

2-NOV-2003 10:17:28:0a pcrj\vr2610a\ec8.ph  
 10/17/99 10:17:28:0a pcrj\vr2610a\ec8.ph