

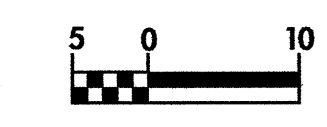
-L-
 PI Sta 30+60.891
 $\Delta = 19^{\circ} 48' 16.9" (LT)$
 $L = 411.332$
 $T = 207.739$
 $R = 1,190.000$
 $SE = 0.041$
 Runoff = 36m

**CLEARING AND GRUBBING
 EROSION CONTROL FOR
 CONSTRUCTION SHEET 11**

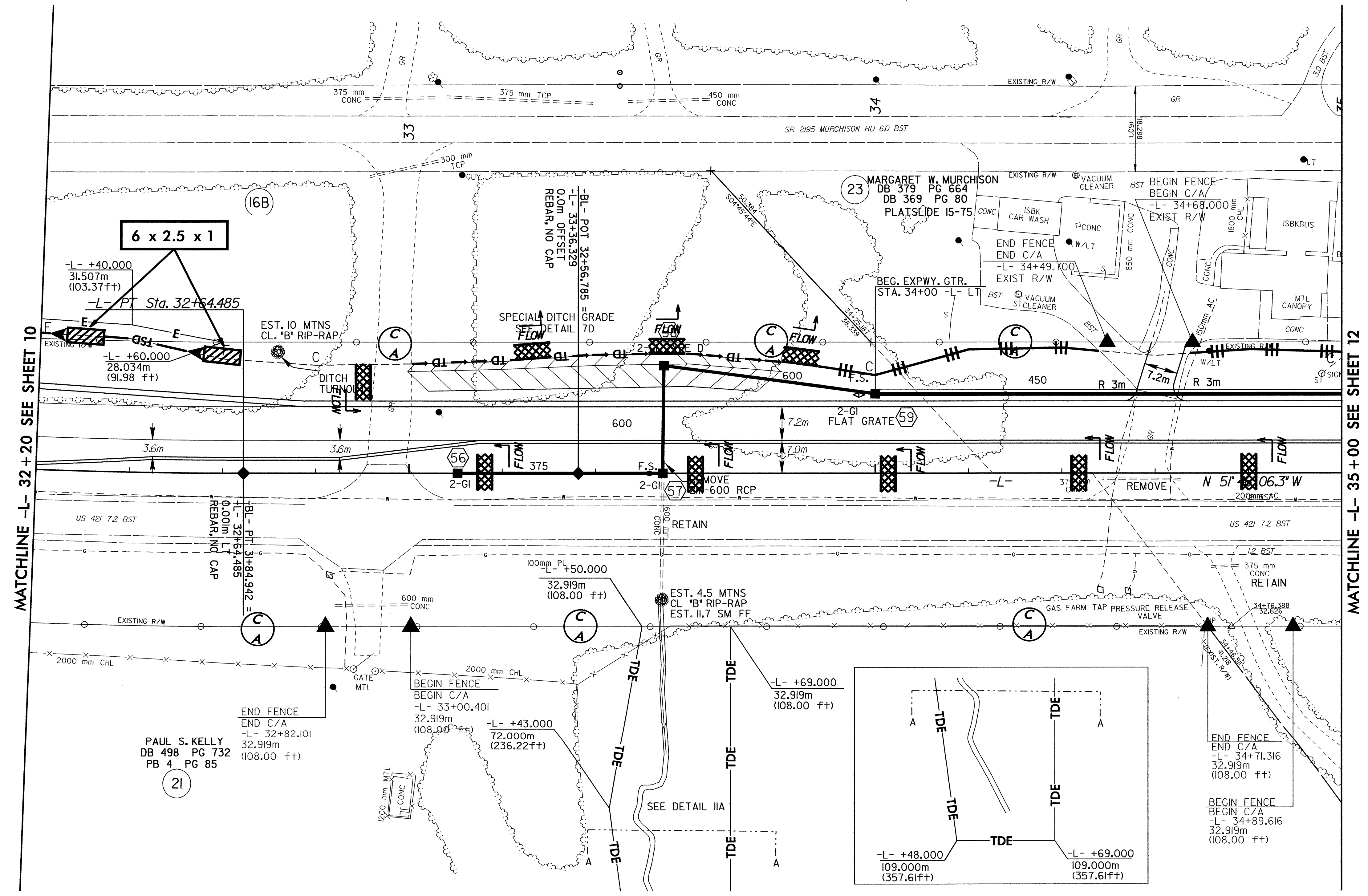


PROJECT REFERENCE NO. R-2610 A	SHEET NO. EC-11/CONST.11
R/W SHEET NO.	
ROADWAY DESIGN ENGINEER	HYDRAULICS ENGINEER
CONST. REV.	
R/W REV. 03-19-02	

NOTE:
 PLACE TEMPORARY ROCK SEDIMENT DAMS TYPE-B
 AND TEMPORARY ROCK SILT CHECKS TYPE-A AT
 DRAINAGE OUTLETS.



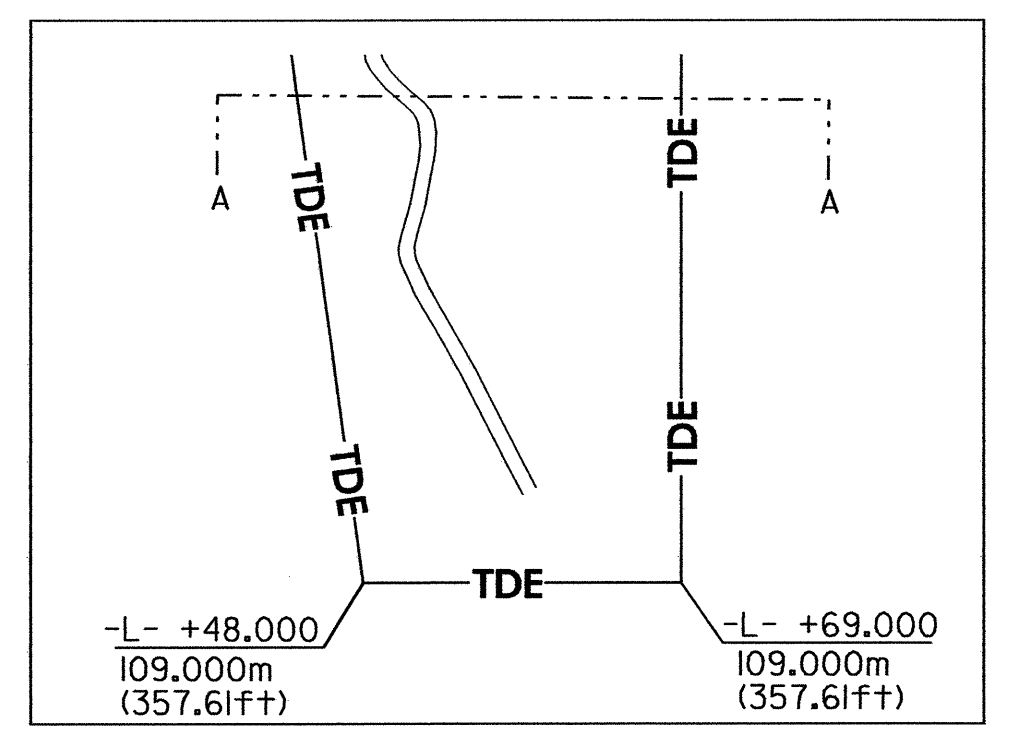
SEE SHEET 30 & 31 FOR -L- PROFILE
 SEE SHEETS 2-H & 2-I FOR DITCH
 DETAILS
 SEE SHEET 48 FOR DITCH PROFILES



MATCHLINE -L- 32 + 20 SEE SHEET 10

MATCHLINE -L- 35 + 00 SEE SHEET 12

PAUL S. KELLY
 DB 498 PG 732
 PB 4 PG 85



8/17/03
 I:\NOV-2003\10\11\11-2610a\proj\2610a\11.pch
 ch\vee\k\paul\11-2610a\proj\2610a\11.pch
 11-2610a\proj\2610a\11.pch