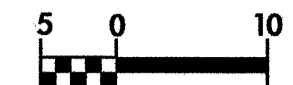


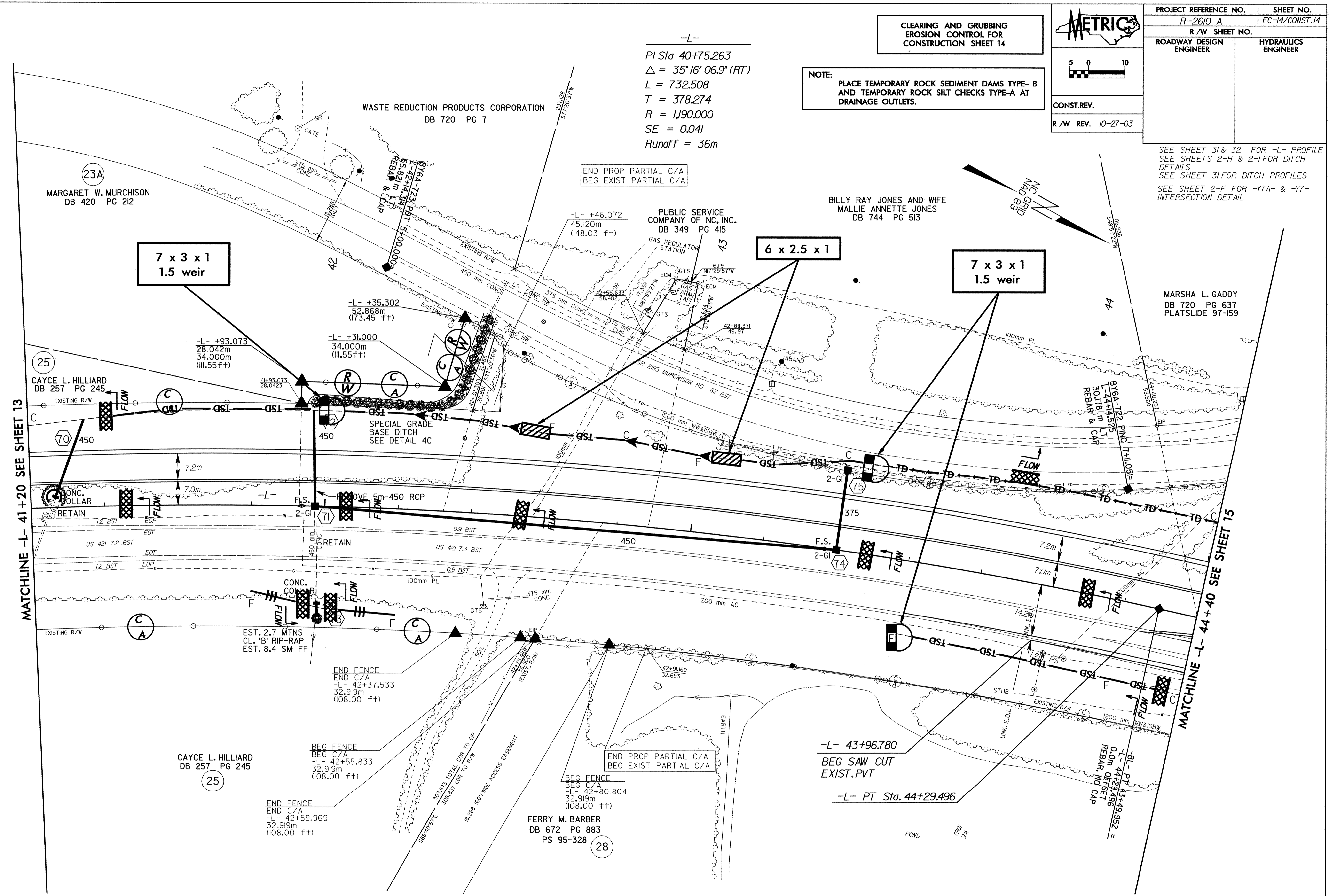
| | |
|-----------------------------------|-----------------------------|
| PROJECT REFERENCE NO. R-2610 A | SHEET NO. EC-14/CONST.14 |
| R/W SHEET NO. | |
| ROADWAY DESIGN ENGINEER | HYDRAULICS ENGINEER |
| CONST. REV. | |
| R/W REV. 10-27-03 | |



CLEARING AND GRUBBING
EROSION CONTROL FOR
CONSTRUCTION SHEET 14

NOTE:
PLACE TEMPORARY ROCK SEDIMENT DAMS TYPE-B
AND TEMPORARY ROCK SILT CHECKS TYPE-A AT
DRAINAGE OUTLETS.

-L-
PI Sta 40+75.263
 $\Delta = 35^\circ 16' 06.9'' (RT)$
 $L = 732.508$
 $T = 378.274$
 $R = 1,190.000$
 $SE = 0.041$
Runoff = 36m



MATCHLINE -L- 41+20 SEE SHEET 13

MATCHLINE -L- 44+40 SEE SHEET 15

SEE SHEET 31 & 32 FOR -L- PROFILE
SEE SHEETS 2-H & 2-I FOR DITCH
DETAILS
SEE SHEET 31 FOR DITCH PROFILES
SEE SHEET 2-F FOR -Y7A- & -Y7-
INTERSECTION DETAIL

12-NOV-2003 10:51
c:\new\p\ra\14-2610a\proj\14-2610a14.pah
mlg:stach