

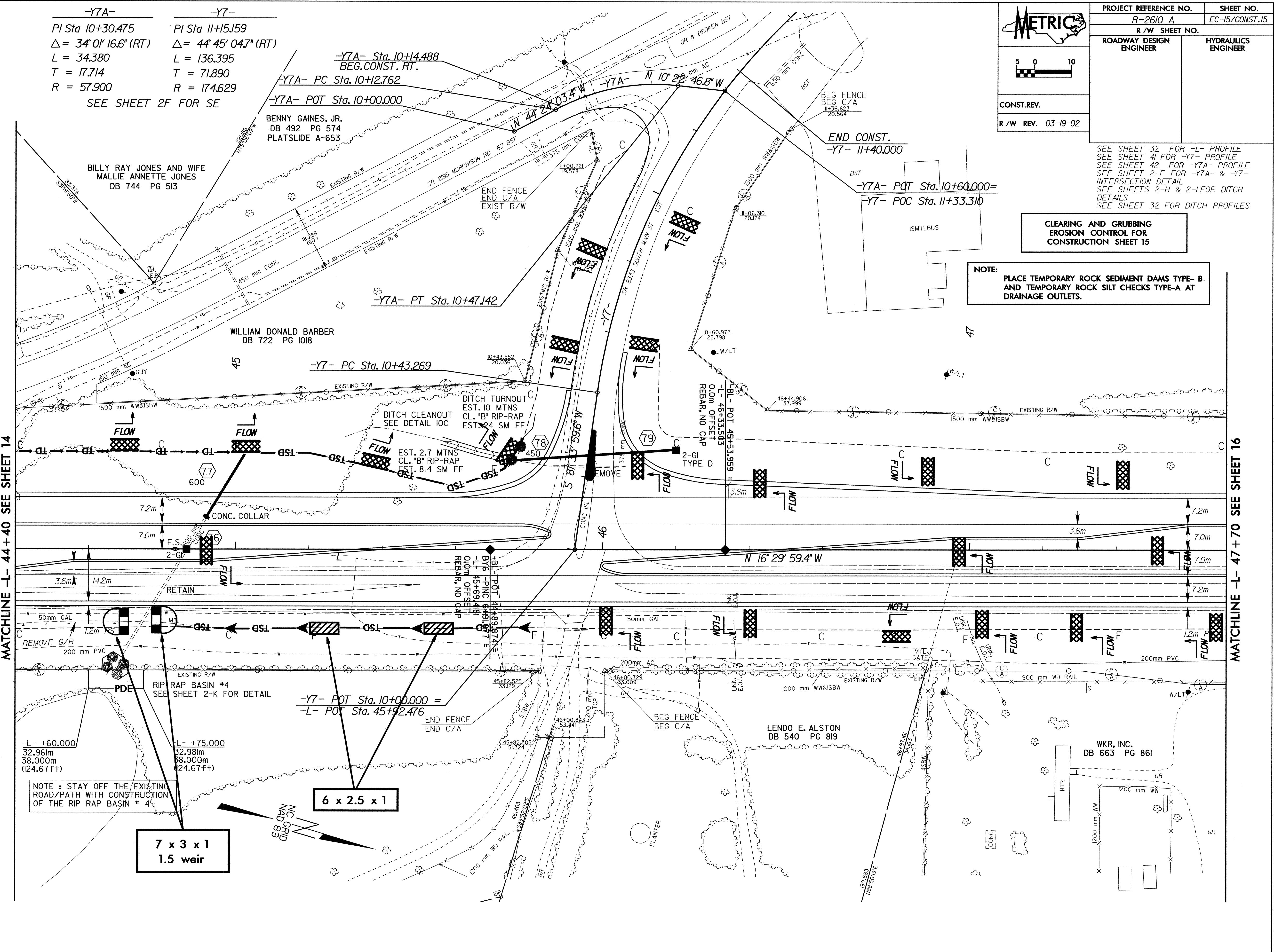
PROJECT REFERENCE NO.	SHEET NO.
R-2610 A	EC-15/CONST.15
R/W SHEET NO.	
ROADWAY DESIGN ENGINEER	HYDRAULICS ENGINEER
CONST.REV.	
R/W REV. 03-19-02	



SEE SHEET 32 FOR -L- PROFILE
 SEE SHEET 41 FOR -Y7- PROFILE
 SEE SHEET 42 FOR -Y7A- PROFILE
 SEE SHEET 2-F FOR -Y7A- & -Y7- INTERSECTION DETAIL
 SEE SHEETS 2-H & 2-I FOR DITCH DETAILS
 SEE SHEET 32 FOR DITCH PROFILES

**CLEARING AND GRUBBING
 EROSION CONTROL FOR
 CONSTRUCTION SHEET 15**

NOTE:
 PLACE TEMPORARY ROCK SEDIMENT DAMS TYPE- B
 AND TEMPORARY ROCK SILT CHECKS TYPE-A AT
 DRAINAGE OUTLETS.



-Y7A- PI Sta 10+30.475 Δ = 34° 01' 16.6" (RT) L = 34.380 T = 17.714 R = 57.900
 -Y7- PI Sta 11+15.159 Δ = 44° 45' 04.7" (RT) L = 136.395 T = 71.890 R = 174.629
 SEE SHEET 2F FOR SE

-Y7A- Sta. 10+14.488 BEG. CONST. RT.
 -Y7A- PC Sta. 10+12.762
 -Y7A- POT Sta. 10+00.000

BENNY GAINES, JR.
 DB 492 PG 574
 PLATSLIDE A-653

BILLY RAY JONES AND WIFE
 MALLIE ANNETTE JONES
 DB 744 PG 513

WILLIAM DONALD BARBER
 DB 722 PG 1018

LENDO E. ALSTON
 DB 540 PG 819

WKR, INC.
 DB 663 PG 861

NOTE: STAY OFF THE EXISTING ROAD/PATH WITH CONSTRUCTION OF THE RIP RAP BASIN # 4

**7 x 3 x 1
 1.5 weir**

6 x 2.5 x 1

MATCHLINE -L- 44+40 SEE SHEET 14

MATCHLINE -L- 47+70 SEE SHEET 16

8/17/09
 P:\DWG\2003\1057\2610a\pvc\15-2610aest15.dwg
 15-2610a-ec-15-const-15.dwg
 15-2610a-ec-15-const-15.dwg