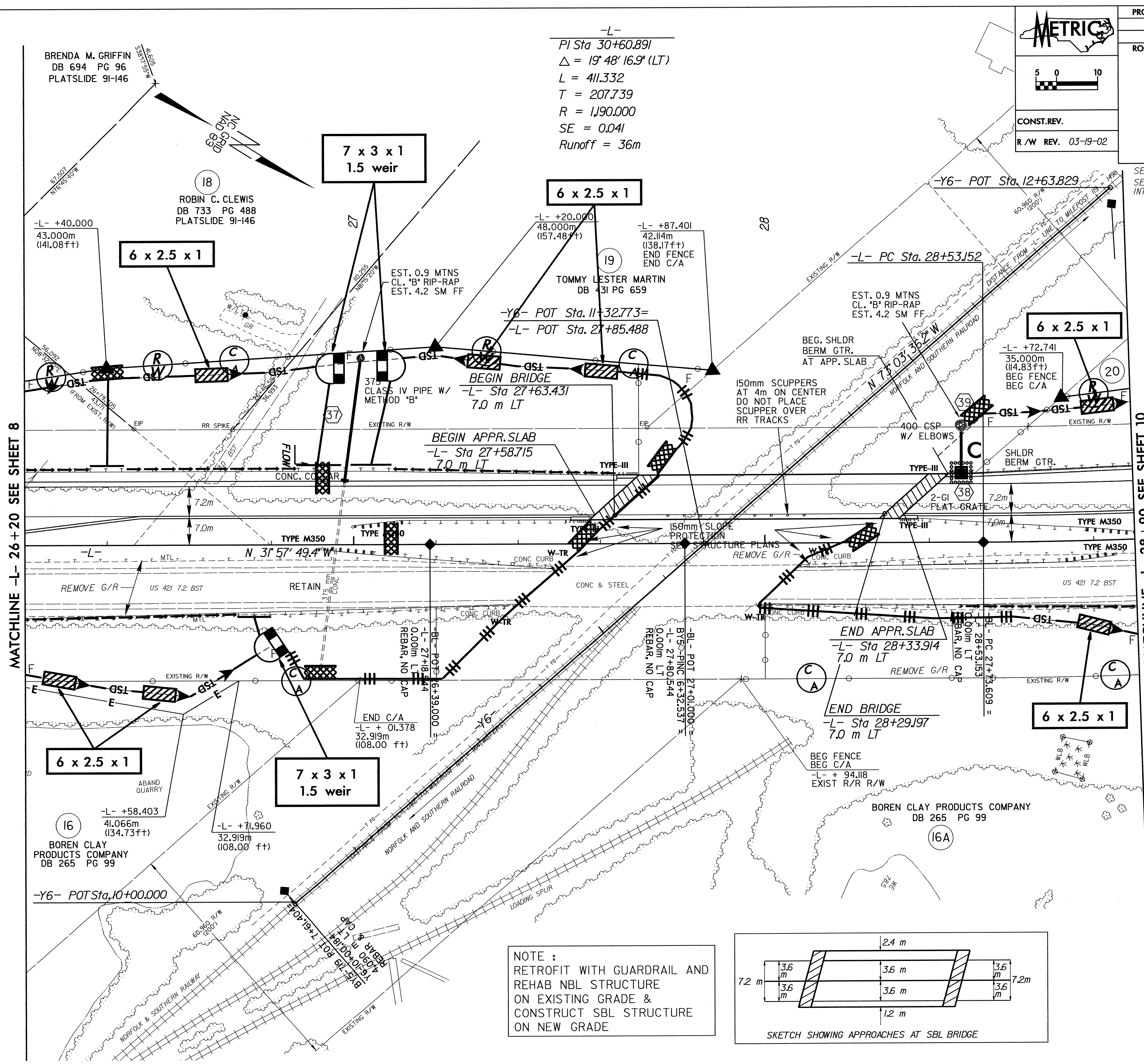


**METRIC**

CONST. REV.  
R/W REV. 03-19-02

PROJECT REFERENCE NO. R-2610 A	SHEET NO. EC-35/CONST.9
R/W SHEET NO.	
ROADWAY DESIGN ENGINEER	HYDRAULICS ENGINEER

-L-  
PI Sta 30+60.891  
 $\Delta = 19^{\circ} 48' 16.9" (LT)$   
 $L = 411.332$   
 $T = 207.739$   
 $R = 1,190.000$   
 $SE = 0.041$   
Runoff = 36m

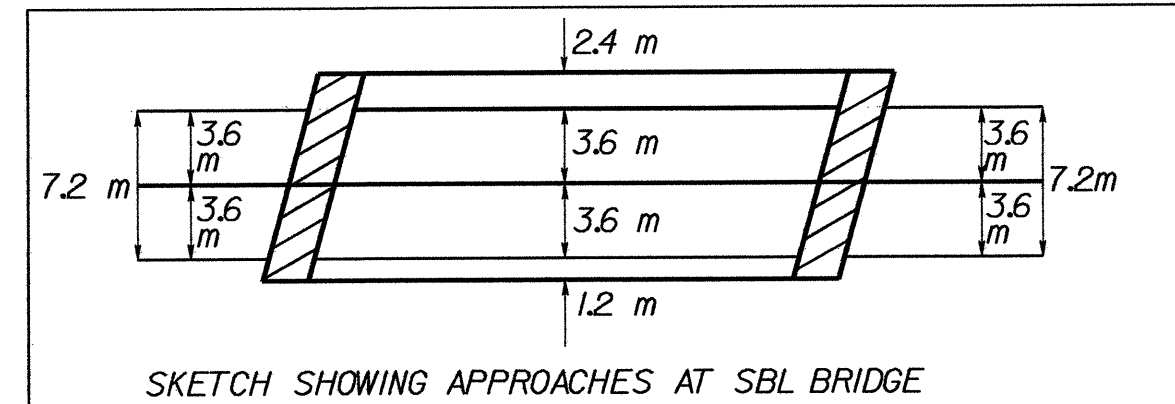


SEE SHEET 29 & 30 FOR -L- PROFILE  
SEE SHEET 2-E FOR -L-, -Y4-, & -Y5- INTERSECTION DETAILS

MATCHLINE -L- 26+20 SEE SHEET 8

MATCHLINE -L- 28+90 SEE SHEET 10

NOTE :  
RETROFIT WITH GUARDRAIL AND REHAB NBL STRUCTURE ON EXISTING GRADE & CONSTRUCT SBL STRUCTURE ON NEW GRADE



8/17/98  
12-NOV-2003 11:48  
C:\View\Draw\2610a\proj\2610a09.dwg  
mlaugstach