

8/17/99

-Y7A-
 PI Sta 10+30.475
 $\Delta = 34^{\circ} 01' 16.6''$ (RT)
 $L = 34.380$
 $T = 17.714$
 $R = 57.900$
 SEE SHEET 2F FOR SE

-Y7-
 PI Sta 11+51.59
 $\Delta = 44^{\circ} 45' 04.7''$ (RT)
 $L = 136.395$
 $T = 71.890$
 $R = 174.629$

-Y7A- Sta. 10+14.488
 BEG. CONST. RT.

-Y7A- PC Sta. 10+12.762

-Y7A- POT Sta. 10+00.000

BENNY GAINES, JR.
 DB 492 PG 574
 PLATSLIDE A-653

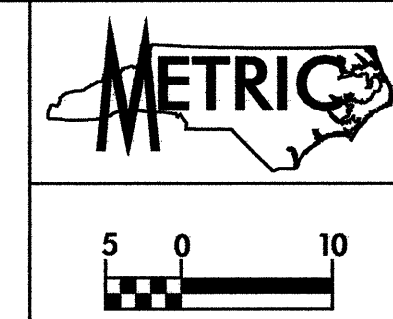
BILLY RAY JONES AND WIFE
 MALLIE ANNETTE JONES
 DB 744 PG 513

WILLIAM DONALD BARBER
 DB 722 PG 1018

BEG FENCE
 BEG C/A
 11+56.623
 203.264

END CONST.
 -Y7- 11+40.000

-Y7A- POT Sta. 10+60.000 =
 -Y7- POC Sta. 11+33.310



CONST. REV.
 R/W REV. 03-19-02

PROJECT REFERENCE NO. R-2610 A	SHEET NO. EC-41/CONST.15
R/W SHEET NO.	
ROADWAY DESIGN ENGINEER	HYDRAULICS ENGINEER

SEE SHEET 32 FOR -L- PROFILE
 SEE SHEET 41 FOR -Y7- PROFILE
 SEE SHEET 42 FOR -Y7A- PROFILE
 SEE SHEET 2-F FOR -Y7A- & -Y7-
 INTERSECTION DETAIL
 SEE SHEETS 2-H & 2-I FOR DITCH
 DETAILS
 SEE SHEET 32 FOR DITCH PROFILES

CLEARING AND GRUBBING
 EROSION CONTROL FOR
 CONSTRUCTION SHEET 15

NOTE:
 PLACE TEMPORARY ROCK SEDIMENT DAMS TYPE- B
 AND TEMPORARY ROCK SILT CHECKS TYPE-A AT
 DRAINAGE OUTLETS.

7 x 3 x 1
 1.5 weir

-Y7A- PT Sta. 10+47.142

-Y7- PC Sta. 10+43.269

DITCH TURNOUT
 EST. 10 MTNS
 CL. "B" RIP-RAP
 EST. 24 SM FF

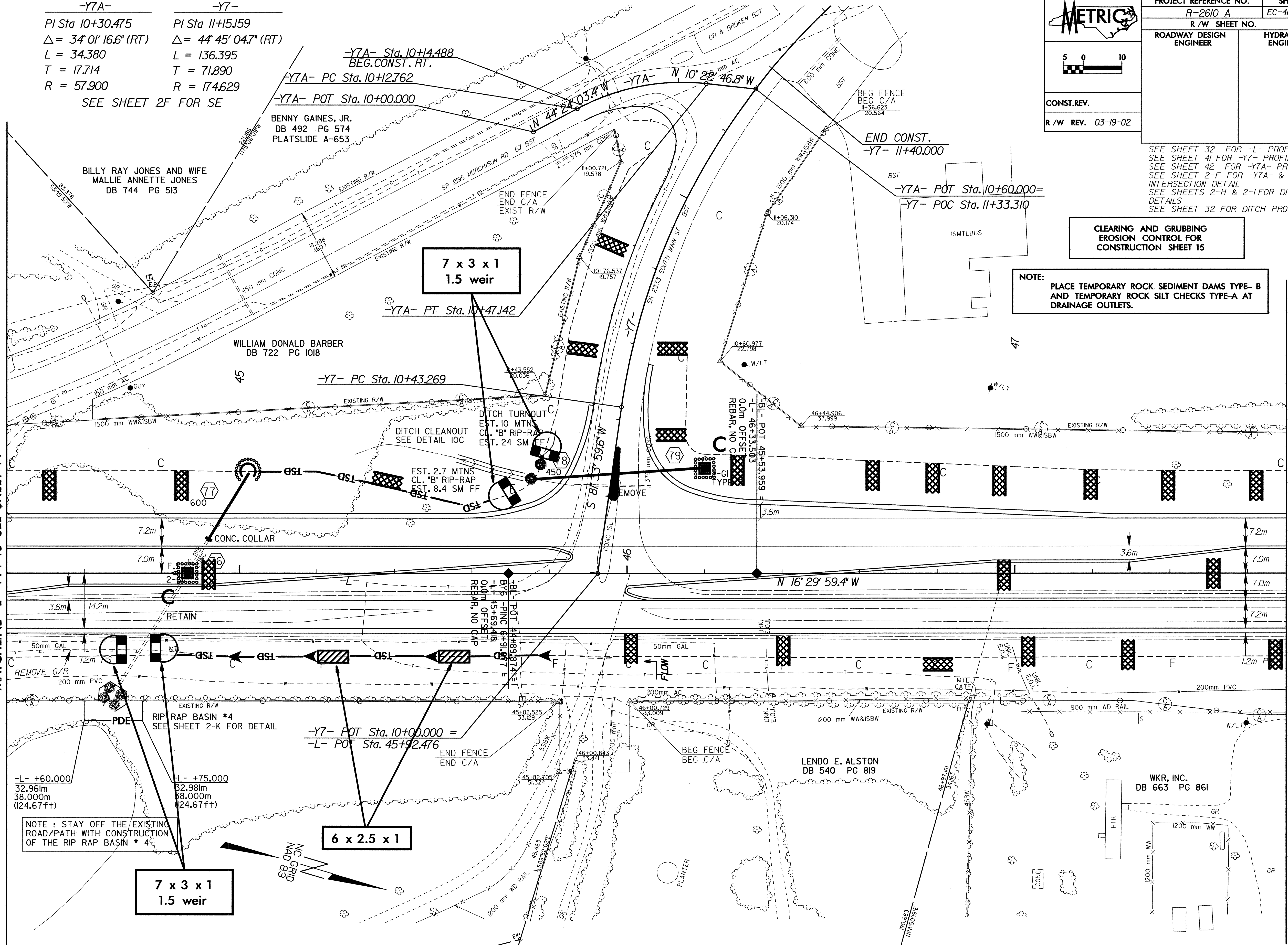
EST. 2.7 MTNS
 CL. "B" RIP-RAP
 EST. 8.4 SM FF

FB- POT 45+53.959
 -L- 46+33.503
 0.0m OFFSET
 REBAR, NO CAP

MATCHLINE -L- 44 + 40 SEE SHEET 14

MATCHLINE -L- 47 + 70 SEE SHEET 16

REVISIONS



NOTE: STAY OFF THE EXISTING
 ROAD/PATH WITH CONSTRUCTION
 OF THE RIP RAP BASIN # 4

7 x 3 x 1
 1.5 weir

6 x 2.5 x 1

-L- +60.000
 32.96m
 38.000m
 (124.67ft)

-L- +75.000
 32.98m
 38.000m
 (124.67ft)

-Y7- POT Sta. 10+00.000 =
 -L- POT Sta. 45+92.476

LENDO E. ALSTON
 DB 540 PG 819

WKR, INC.
 DB 663 PG 861

12/NOV-2003 12:45
 C:\re\l\proj\2610a\proj\2610a\15.pah
 mlaughlin