

CONST. REV.  
R/W REV.

PROJECT REFERENCE NO. R-2610 A	SHEET NO. EG-51/CONST.25
R/W SHEET NO.	
ROADWAY DESIGN ENGINEER	HYDRAULICS ENGINEER

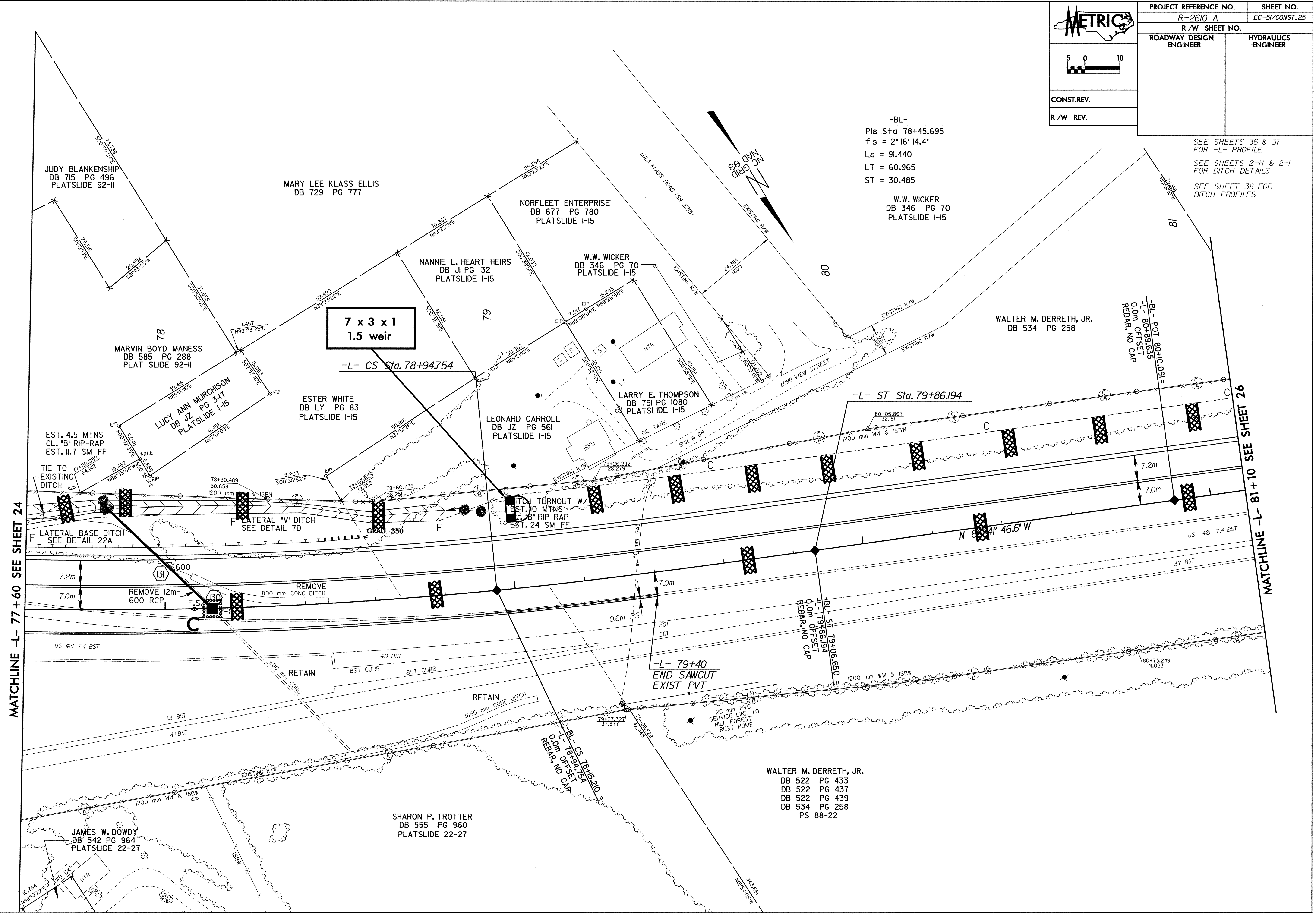
SEE SHEETS 36 & 37 FOR -L- PROFILE  
SEE SHEETS 2-H & 2-I FOR DITCH DETAILS  
SEE SHEET 36 FOR DITCH PROFILES

-BL-  
Pis Sta 78+45.695  
fs = 2°16'14.4"  
Ls = 91.440  
LT = 60.965  
ST = 30.485

W.W. WICKER  
DB 346 PG 70  
PLATSLIDE I-15

WALTER M. DERRETH, JR.  
DB 522 PG 433  
DB 522 PG 437  
DB 522 PG 439  
DB 534 PG 258  
PS 88-22

8/17/99  
I:\NOV-2003\1405\dwg\plan\2610a\pco\jv\2610as25.pah



MATCHLINE -L- 77+60 SEE SHEET 24

MATCHLINE -L- 81+10 SEE SHEET 26

7 x 3 x 1  
1.5 weir

-L- CS Sta. 78+94.754

-L- ST Sta. 79+86.194

-L- 79+40  
END SAWCUT  
EXIST PVT

-BL- CS Sta. 78+15.210  
-L- 81+10  
0.0m OFFSET  
REBAR, NO CAP

-BL- POT 80+10.091  
-L- 80+89.635  
0.0m OFFSET  
REBAR, NO CAP

-BL- ST 79+06.650  
-L- 79+86.194  
0.0m OFFSET  
REBAR, NO CAP

JUDY BLANKENSHIP  
DB 715 PG 496  
PLATSLIDE 92-II

MARY LEE KLASS ELLIS  
DB 729 PG 777

NORFLEET ENTERPRISE  
DB 677 PG 780  
PLATSLIDE I-15

NANNIE L. HEART HEIRS  
DB JI PG 132  
PLATSLIDE I-15

W.W. WICKER  
DB 346 PG 70  
PLATSLIDE I-15

WALTER M. DERRETH, JR.  
DB 534 PG 258

MARVIN BOYD MANESS  
DB 585 PG 288  
PLAT SLIDE 92-II

LUCY ANN MURCHISON  
DB JZ PG 347  
PLATSLIDE I-15

ESTER WHITE  
DB LY PG 83  
PLATSLIDE I-15

LEONARD CARROLL  
DB JZ PG 561  
PLATSLIDE I-15

LARRY E. THOMPSON  
DB 751 PG 1080  
PLATSLIDE I-15

EST. 4.5 MTNS  
CL. B RIP-RAP  
EST. 11.7 SM FF

TIE TO  
EXISTING  
DITCH

LATERAL BASE DITCH  
SEE DETAIL 22A

LATERAL "V" DITCH  
SEE DETAIL 7D

DITCH TURNOUT W/  
EST. 10 MTNS  
CL. B RIP-RAP  
EST. 24 SM FF

REMOVE 12m-  
600 RCP

REMOVE  
1800 mm CONC DITCH

US 421 7.4 BST

13 BST

4J BST

600 mm CONC

RETAIN

4D BST

BST CURB

RETAIN

1650 mm CONC DITCH

0.6m PS

7.0m

EOT

EOT

7.0m

1200 mm WW & ISBW

1200 mm WW & ISBW

JAMES W. DOWDY  
DB 542 PG 964  
PLATSLIDE 22-27

SHARON P. TROTTER  
DB 555 PG 960  
PLATSLIDE 22-27