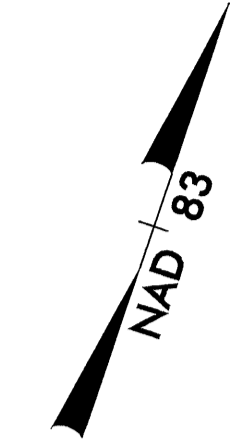


UTILITIES BY OTHERS

NOTE:
ALL PROPOSED UTILITY WORK
SHOWN ON THIS SHEET WILL
BE DONE BY OTHERS

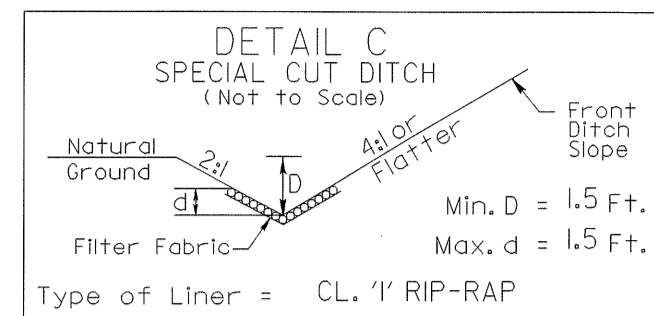
-L-

-L-	
PI Sta 23+76.11	PI Sta 28+79.25
$\Delta = 0'08'22.6"$ (LT)	$\Delta = 1'18'25.7"$ (RT)
$D = 0'17'11.3"$	$D = 5'22'47.6"$
$L = 48.73'$	$L = 210.17'$
$T = 24.37'$	$T = 105.43'$
$R = 20,000.00'$	$R = 1,065.00'$
SE=NC	SE= SEE PLANS



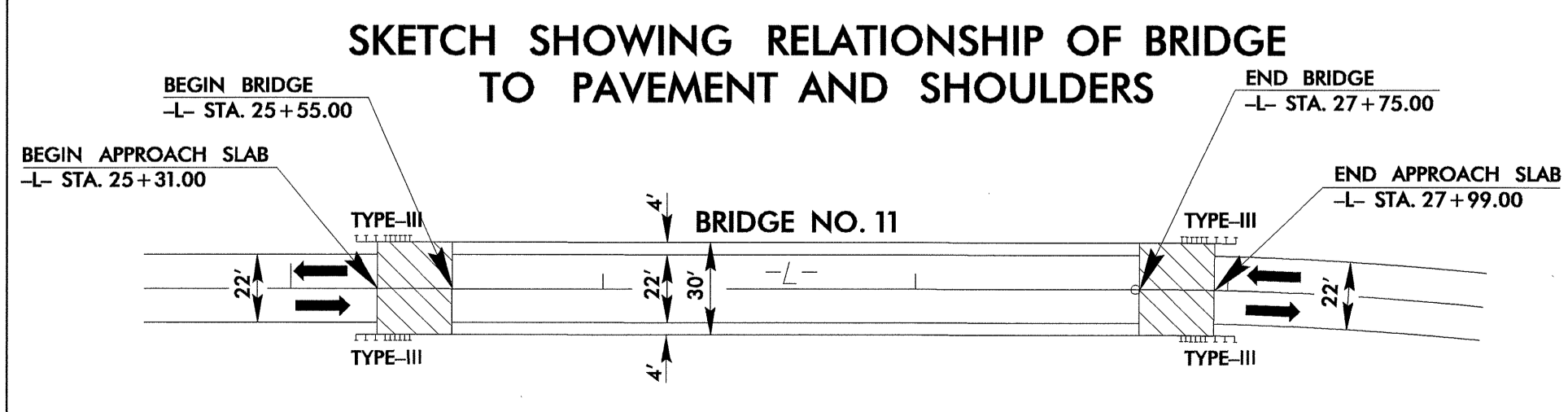
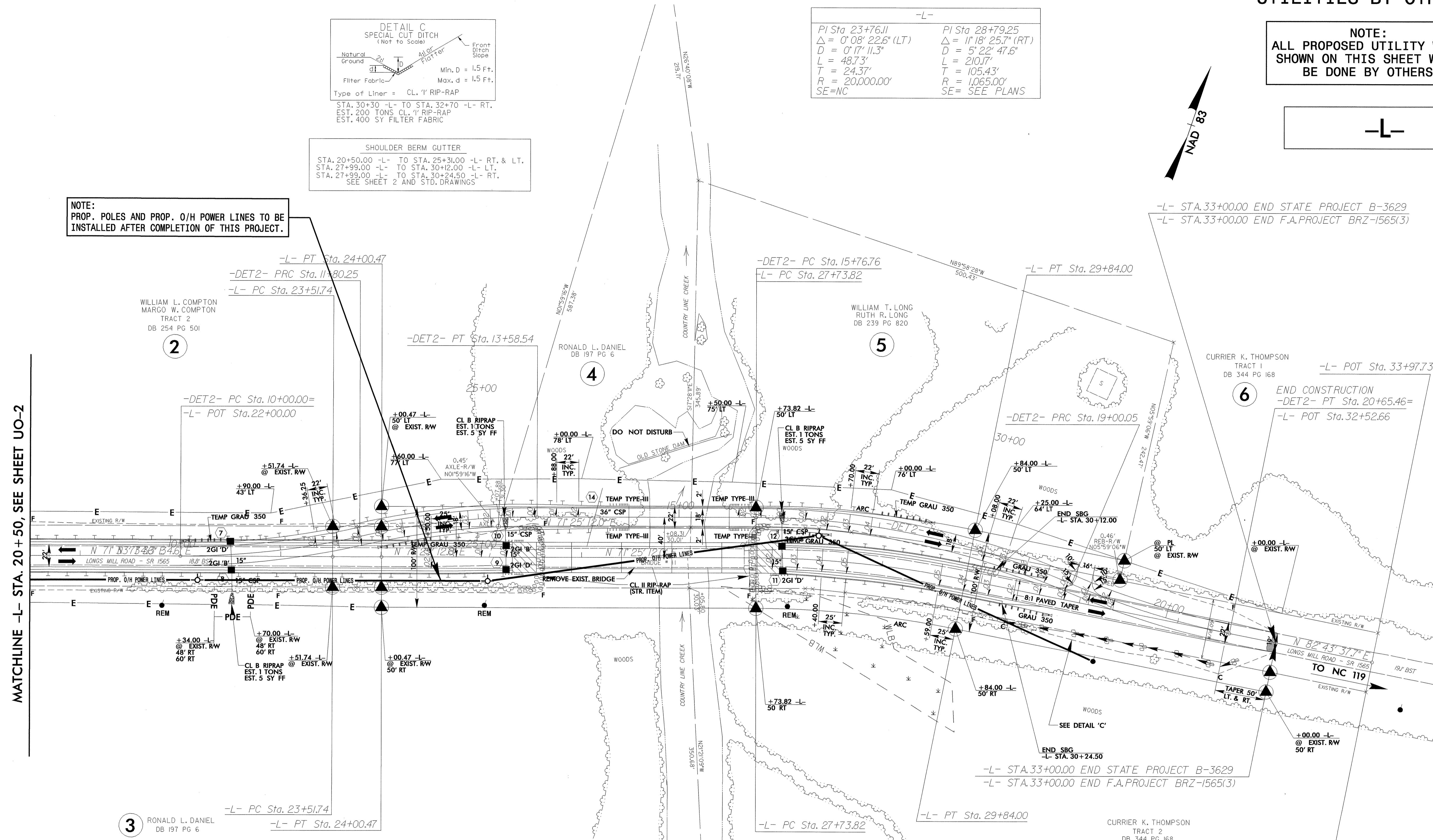
NOTE:
PROP. POLES AND PROP. O/H POWER LINES TO BE
INSTALLED AFTER COMPLETION OF THIS PROJECT.

SHOULDER BERM GUTTER
STA. 20+50.00 -L- TO STA. 25+31.00 -L- RT. & LT.
STA. 27+99.00 -L- TO STA. 30+12.00 -L- LT.
STA. 27+99.00 -L- TO STA. 30+24.50 -L- RT.
SEE SHEET 2 AND STD. DRAWINGS



MATCHLINE -L- STA. 20 + 50, SEE SHEET UO-2

8/17/99
10-JUN-2004 09:55
R:\Utilities\Road\AT\DS24533.dwg
User: jsh



DESIGN EXCEPTION REQUIRED FOR SAG VERTICAL CURVES,
SUPERELEVATION, AND STOPPING SIGHT DISTANCE.

SEE SHEET 8 FOR -L- LINE PROFILE
SEE SHEETS S-1 THRU S-26 FOR STRUCTURE PLANS