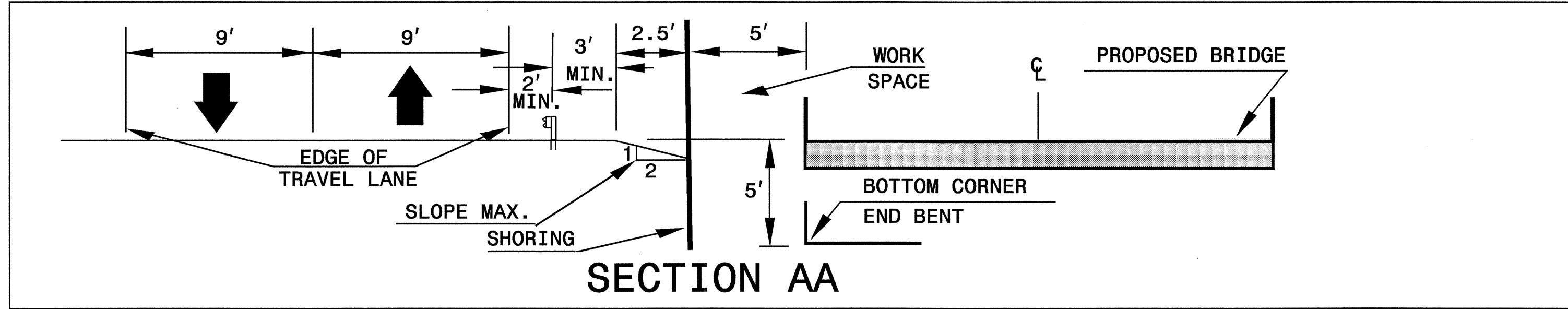
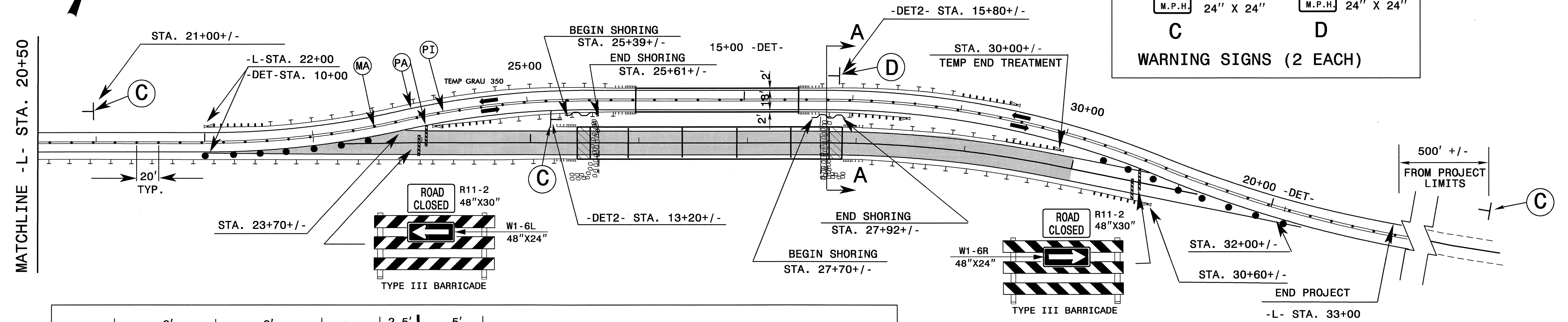
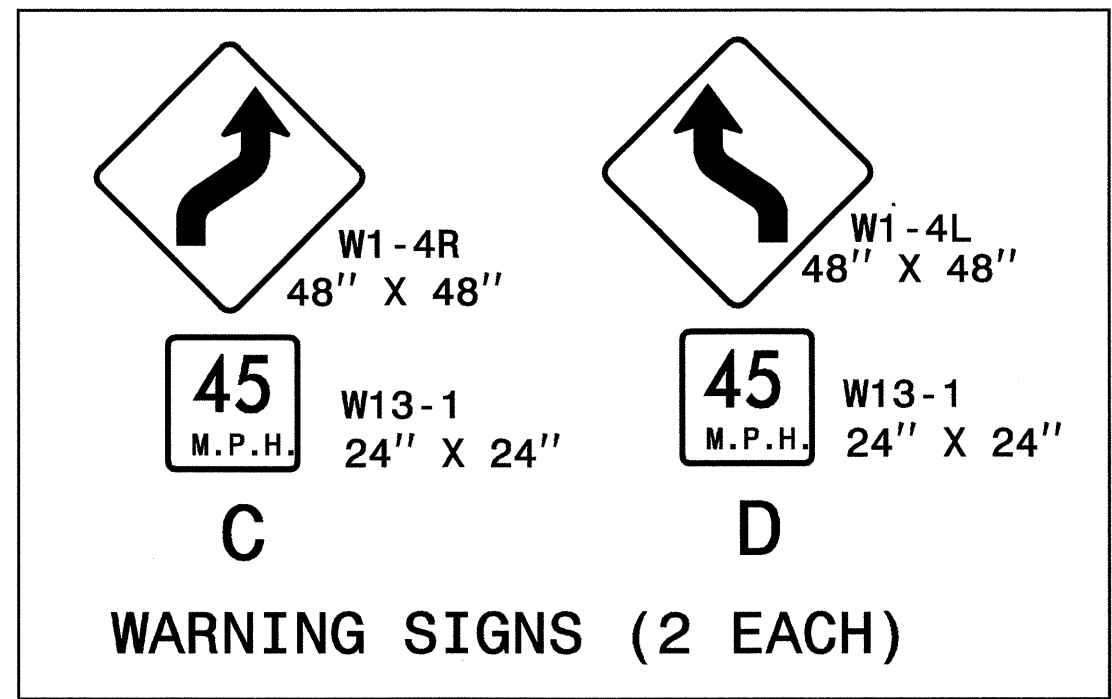


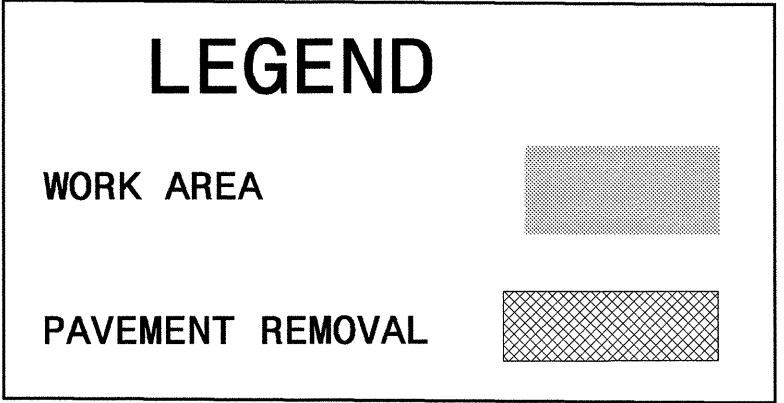
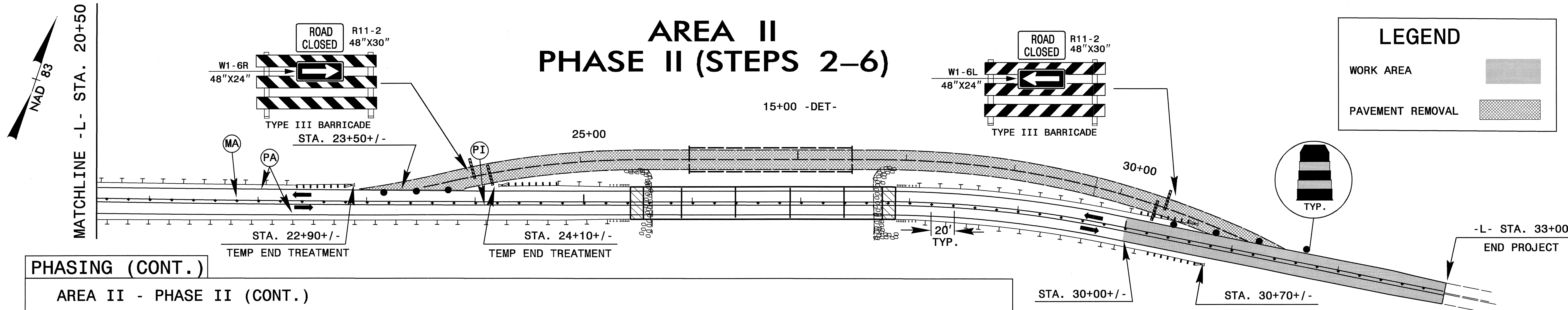
## AREA II PHASE II (STEP 1)

**NOTE**  
 FOR DESIGN OF TEMPORARY SHORING, USE THE FOLLOWING SOIL PARAMETERS:  
 UNIT WEIGHT OF SOIL ABOVE WATER TABLE, = 120 PCF  
 UNIT WEIGHT OF SOIL BELOW WATER TABLE, = 60 PCF  
 FRICTION ANGLE, = 30°  
 COHESION, C = 0.0 PSF



**PHASING (CONT.)**  
**AREA II - PHASE II**  
 STEP 1. USING ROADWAY STANDARD DRAWING 1101.02, SHEET 1 OF 7, AS NEEDED, CONSTRUCT THE FOLLOWING FROM STA. 22+00+/- TO STA. 30+60+/- AS SHOWN:  
 - CONSTRUCT TEMPORARY SHORING, PROPOSED BRIDGE, AND PROPOSED ROADWAY TO STA. 30+00+/-, INCLUDING TIE-IN, UP TO BUT NOT INCLUDING THE FINAL LAYER OF SURFACE COURSE.  
 - CONSTRUCT PROPOSED GUARDRAIL AND TEMPORARY END TREATMENTS. (SEE LOCAL NOTE 1)

## AREA II PHASE II (STEPS 2-6)



**PHASING (CONT.)**  
**AREA II - PHASE II (CONT.)**  
 USING ROADWAY STANDARD DRAWING 1101.02, SHEET 1 OF 7, COMPLETE STEPS 2 THRU 4 AS SHOWN ON TCP-4 AND TCP-5 IN A CONTINUOUS MANNER.

STEP 2. SHIFT TRAFFIC TO 1 LANE-2 WAY PATTERN TO -DET2- LEFT LANE AND PAVE AND WEDGE THE RIGHT LANE OF -L- FROM STA. 30+00+/- TO STA. 33+00+/-, UP TO BUT NOT INCLUDING THE FINAL LAYER OF SURFACE COURSE.

STEP 3. SHIFT TRAFFIC TO THE RIGHT LANE OF -L- AND PAVE AND WEDGE THE LEFT LANE OF -L- FROM STA. 30+00+/- TO STA. 33+00+/-, UP TO BUT NOT INCLUDING THE FINAL LAYER OF SURFACE COURSE.

STEP 4. APPLY TEMPORARY PAVEMENT MARKINGS, SHIFT TRAFFIC TO FINAL ALIGNMENT, REMOVE TRAFFIC SHIFT SIGNS, AND INSTALL TRAFFIC CONTROL DEVICES.

STEP 5. REMOVE DETOUR STRUCTURE AND ROADWAY.

STEP 6. REMOVE TEMPORARY END TREATMENTS AND COMPLETE GUARDRAIL CONSTRUCTION.

UPON COMPLETION OF CONSTRUCTION OF AREA I AND AREA II, USING ROADWAY STANDARD DRAWING 1101.02, SHEET 1 OF 7, PLACE FINAL LAYER OF SURFACE COURSE AND PAVEMENT MARKINGS ON PROPOSED -L- FROM STA. 11+50+/- TO STA. 33+00+/- . (SEE PM-1)

APPROVED: <i>Jessica D. Kuse</i> DATE: 6/14/04	<b>AREA II PHASE II</b>		
	SCALE: NONE		
	DATE: 6/14/04		REVISIONS
	DWG. BY: WRH		
	DESIGN BY: WRH		
REVIEWED BY: JDK			

24-JUN-2004 14:43  
 H:\TCP\B3629\TCP.dgn  
 P:\helms AT TET\067166