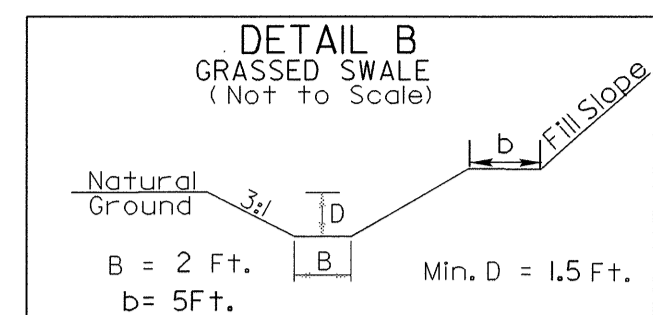
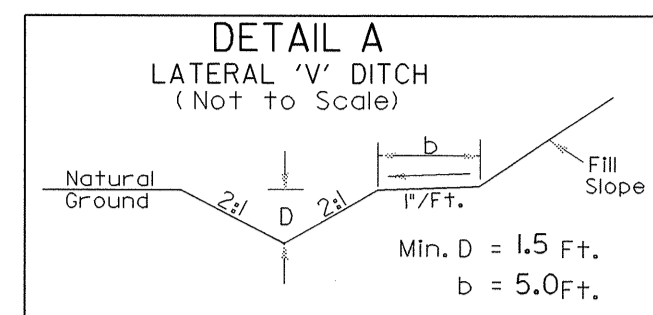


8/17/99

PROJECT REFERENCE NO. B-3629	SHEET NO. 4
RW SHEET NO.	
ROADWAY DESIGN ENGINEER NORTH CAROLINA PROFESSIONAL ENGINEER SEAL 14571 JAMES A. SPEER 7/14/04	HYDRAULICS ENGINEER NORTH CAROLINA PROFESSIONAL ENGINEER SEAL 18600 RANDALL C. HENNING 7-14-04

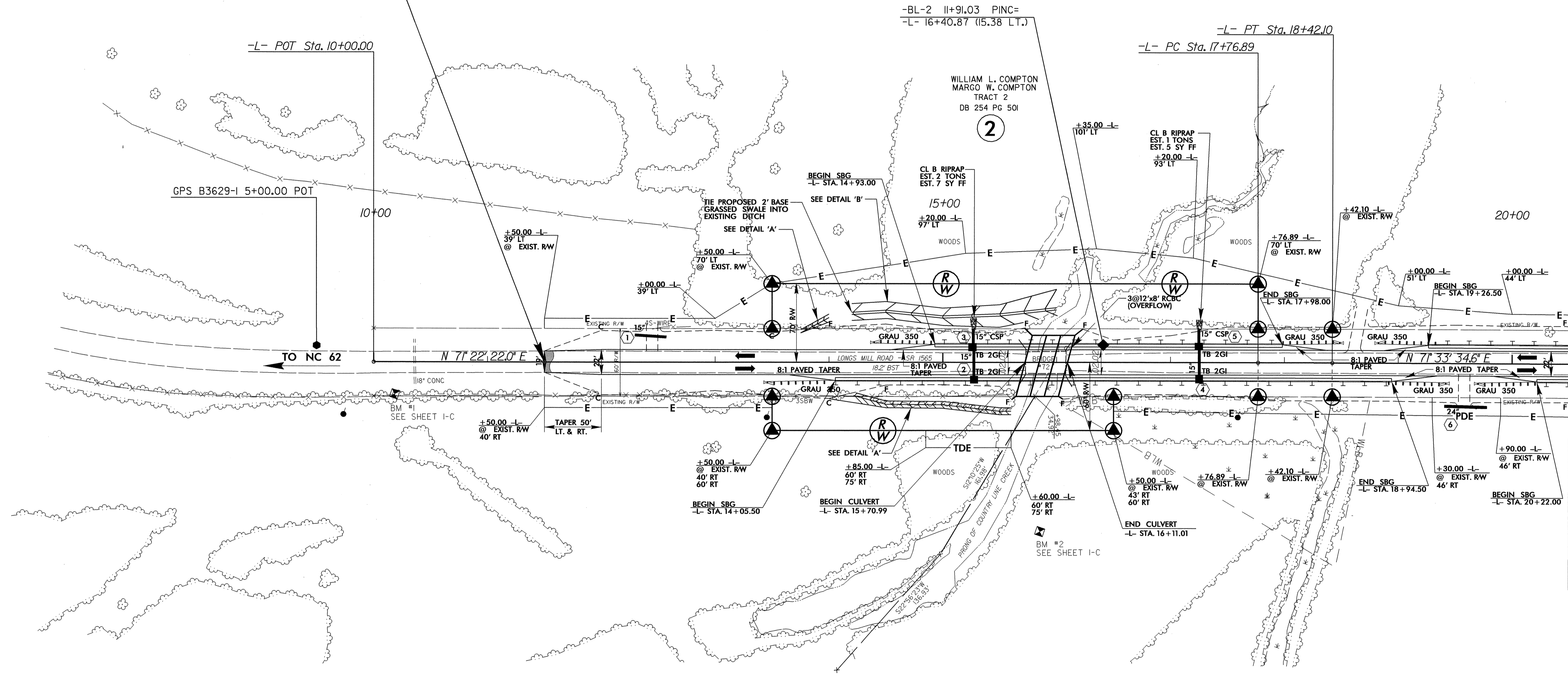


-L-
 PI Sta 18+09.49
 $\Delta = 0' 11' 12.6''$ (RT)
 $D = 0' 17' 11.3''$
 $L = 65.22'$
 $T = 32.6'$
 $R = 20,000.00'$
 $SE = NC$

STA. 13+75 -L- TO STA. 14+00 -L- LT., DDE= 2CY
 STA. 14+25 -L- TO STA. 15+60 -L- RT., DDE= 18CY
 STA. 14+20 -L- TO STA. 16+00 -L- LT., DDE= 199CY

SHOULDER BERM GUTTER
 STA. 14+93.00 -L- TO STA. 17+98.00 -L- LT.
 STA. 19+26.50 -L- TO STA. 20+50.00 -L- LT.
 STA. 14+05.50 -L- TO STA. 18+94.50 -L- RT.
 STA. 20+22.00 -L- TO STA. 20+50.00 -L- RT.
 SEE SHEET 2 AND STD. DRAWINGS

-L- STA. 11+50.00 BEGIN STATE PROJECT B-3629
 -L- STA. 11+50.00 BEGIN F.A. PROJECT BRZ-1565(3)



REVISIONS

MATCHLINE -L- STA. 20+50, SEE SHEET 5

DAVID W. SIMS
 DB 239 PG 454

RONALD L. DANIEL
 DB 197 PG 6

DESIGN EXCEPTION REQUIRED FOR SAG VERTICAL CURVES,
 SUPERELEVATION, AND STOPPING SIGHT DISTANCE.

SEE SHEET 8 FOR -L- LINE PROFILE
 SEE SHEETS C-1 THRU C-6 FOR CULVERT PLANS

14-JUL-2004 08:00
 R:\proj\B3629\rdy\psh_s04.dgn
 DWGardner -L- RD212399