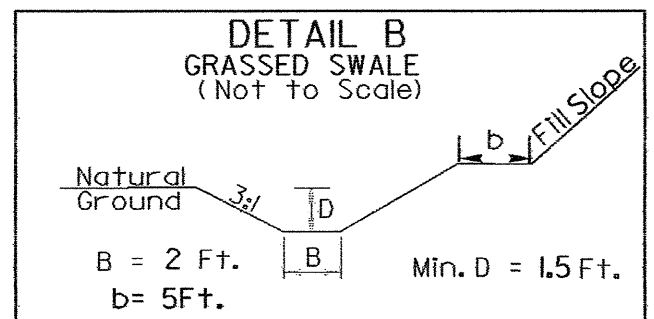
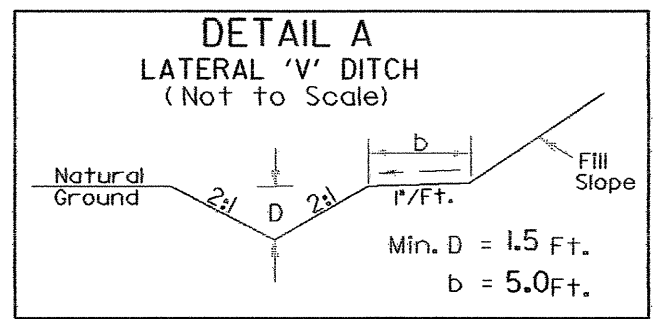


PROJECT REFERENCE NO. B-3629		SHEET NO. EC-8/CONST.4	
RW SHEET NO.			
ROADWAY DESIGN ENGINEER		HYDRAULICS ENGINEER	

NOTE:
TEMPORARY SILT FENCE SHALL BE INSTALLED A MINIMUM OF 3 FEET FROM TOE OF FILL IN WETLAND AREAS

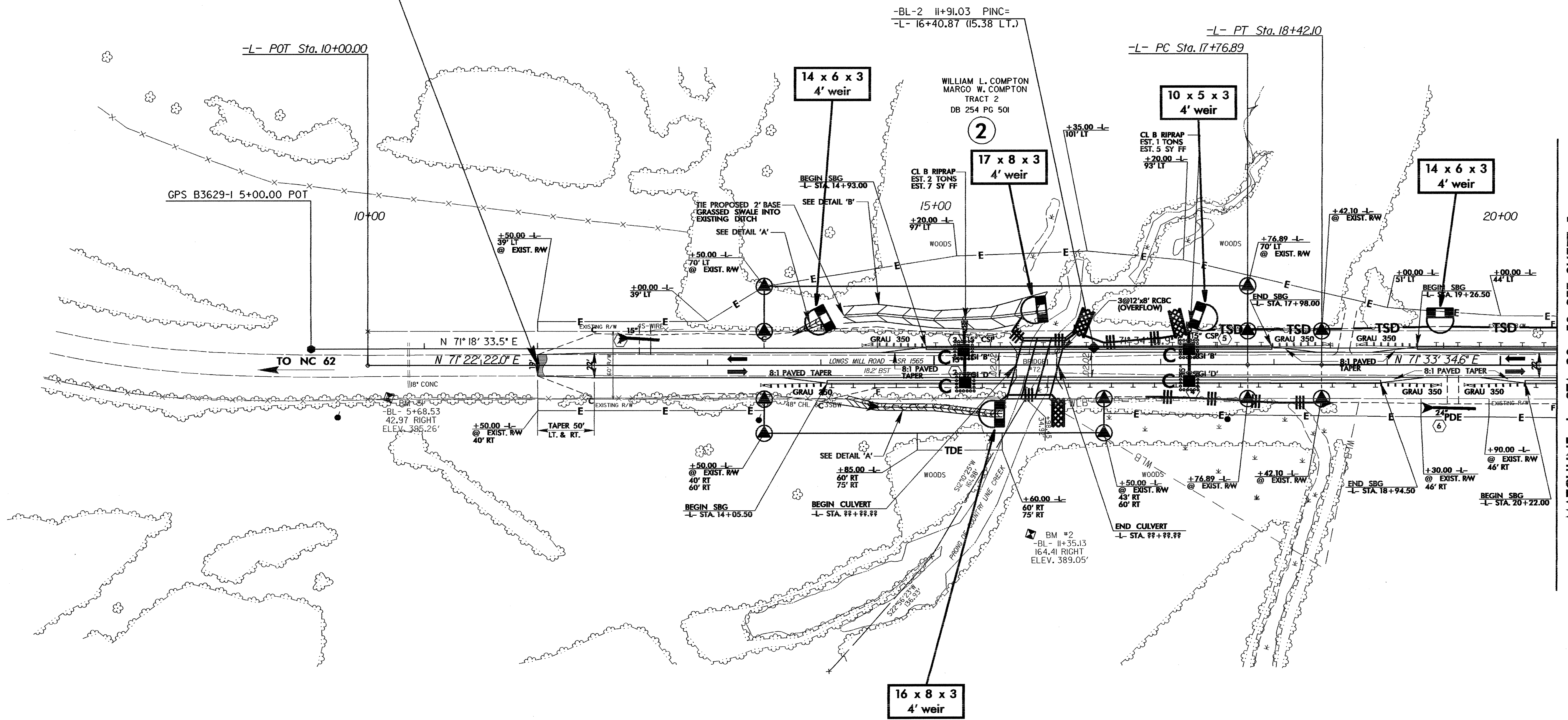


STA. 13+75 -L- TO STA. 14+00 -L- LT., DDE= 2CY
STA. 14+25 -L- TO STA. 15+60 -L- RT., DDE= 1BCY
STA. 14+20 -L- TO STA. 16+00 -L- LT., DDE= 199CY

-L-
PI Sta 18+09.49
 $\Delta = 0' 11' 12.6'' (RT)$
 $D = 0' 17' 11.3''$
 $L = 65.22'$
 $T = 32.6'$
 $R = 20,000.00'$
SE=NC

SHOULDER BERM GUTTER
STA. 14+93.00 -L- TO STA. 17+98.00 -L- LT.
STA. 19+26.50 -L- TO STA. 20+50.00 -L- LT.
STA. 14+05.50 -L- TO STA. 18+94.50 -L- RT.
STA. 20+22.00 -L- TO STA. 20+50.00 -L- RT.
SEE SHEET 2 AND STD. DRAWINGS

-L- STA. 11+50.00 BEGIN STATE PROJECT B-3629
-L- STA. 11+50.00 BEGIN F.A. PROJECT BRZ-1565(3)



MATCHLINE -L- STA. 20+50, SEE SHEET 5

DAVID W. SIMS
DB 239 PG 454

1

RONALD L. DANIEL
DB 197 PG 6

3

SEE SHEET 8 FOR -L- LINE PROFILE
SEE SHEETS C-1 THRU C- FOR CULVERT PLANS