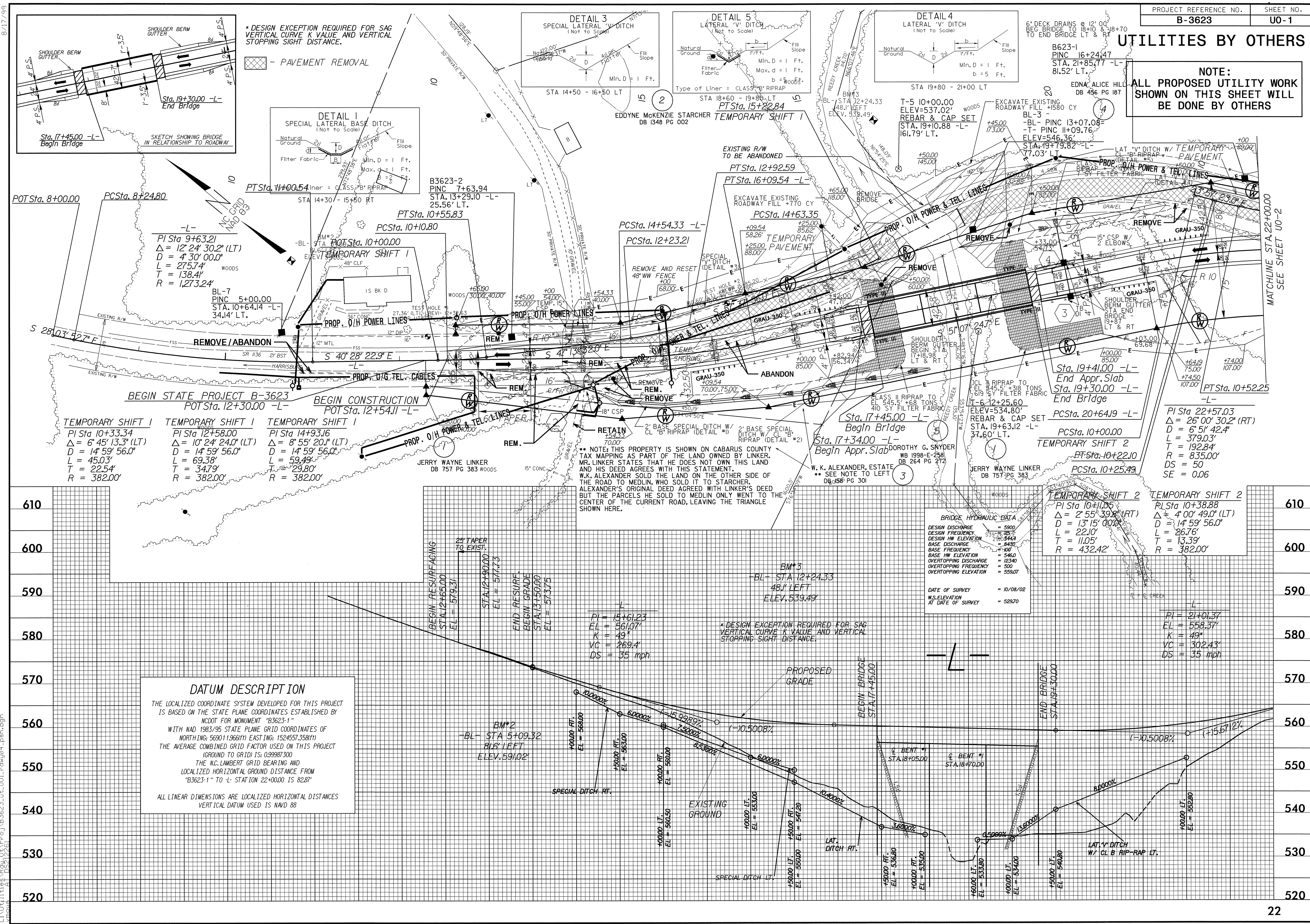


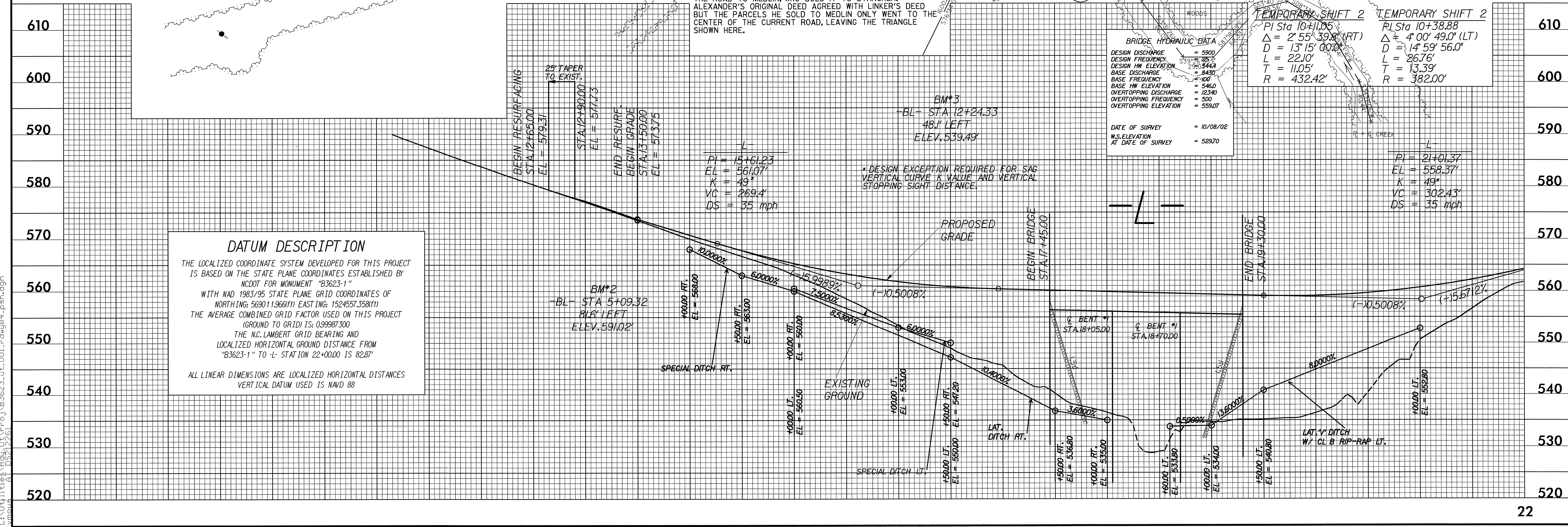
UTILITIES BY OTHERS

NOTE:  
ALL PROPOSED UTILITY WORK SHOWN ON THIS SHEET WILL BE DONE BY OTHERS



8/17/99  
03-DEC-2003 13:24  
L:\Utilities\B3623\ut.U01.r.dwg04\_psh.dgn

MATCHLINE STA. 22+00.00  
SEE SHEET UO-2



**DATUM DESCRIPTION**  
 THE LOCALIZED COORDINATE SYSTEM DEVELOPED FOR THIS PROJECT IS BASED ON THE STATE PLANE COORDINATES ESTABLISHED BY NCDOT FOR MONUMENT "B3623-1" WITH NAD 1983/95 STATE PLANE GRID COORDINATES OF NORTHING: 5690119366(1) EASTING: 1524557358(1) THE AVERAGE COMBINED GRID FACTOR USED ON THIS PROJECT (GROUND TO GRID) IS: 0.99987300 THE N.C. LAMBERT GRID BEARING AND LOCALIZED HORIZONTAL GROUND DISTANCE FROM "B3623-1" TO STATION 22+00.00 IS 82.87' ALL LINEAR DIMENSIONS ARE LOCALIZED HORIZONTAL DISTANCES VERTICAL DATUM USED IS NAVD 88

**BRIDGE HYDRAULIC DATA**

DESIGN DISCHARGE	= 5900
DESIGN FREQUENCY	= 0.25
DESIGN HW ELEVATION	= 544.3
BASE DISCHARGE	= 8430
BASE FREQUENCY	= 1.00
BASE HW ELEVATION	= 546.0
OVERTOPPING DISCHARGE	= 12340
OVERTOPPING FREQUENCY	= 500
OVERTOPPING ELEVATION	= 559.07

DATE OF SURVEY = 10/08/02  
 W.S. ELEVATION AT DATE OF SURVEY = 52870

PI = 15+61.23  
 EL = 561.07'  
 K = 49'  
 VC = 269.4'  
 DS = 35 mph

**TEMPORARY SHIFT 1**  
 PI Sta 10+33.34  
 Δ = 6° 45' 13.3" (LT)  
 D = 14' 59" 56.0"  
 L = 45.03'  
 T = 22.54'  
 R = 382.00'

**TEMPORARY SHIFT 2**  
 PI Sta 10+11.05  
 Δ = 2° 55' 39.8" (RT)  
 D = 13' 15" 00.0"  
 L = 22.10'  
 R = 432.42'

NOTE: THIS PROPERTY IS SHOWN ON CABARUS COUNTY TAX MAPING AS PART OF THE LAND OWNED BY LINKER, MR. LINKER STATES THAT HE DOES NOT OWN THIS LAND AND HIS DEED AGREES WITH THIS STATEMENT. W.K. ALEXANDER SOLD THE LAND ON THE OTHER SIDE OF THE ROAD TO MEDLIN, WHO SOLD IT TO STARCHER. ALEXANDER'S ORIGINAL DEED AGREED WITH LINKER'S DEED BUT THE PARCELS HE SOLD TO MEDLIN ONLY WENT TO THE CENTER OF THE CURRENT ROAD, LEAVING THE TRIANGLE SHOWN HERE.

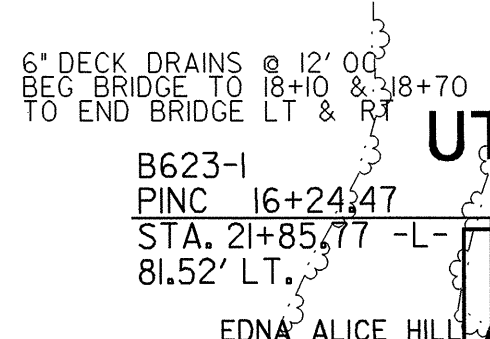
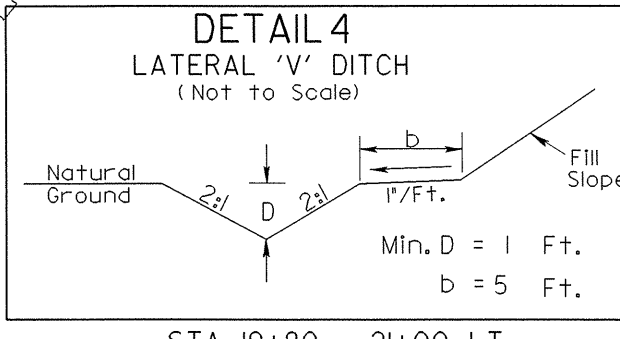
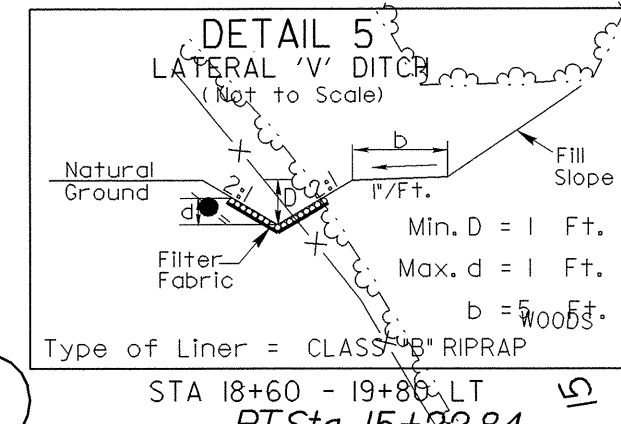
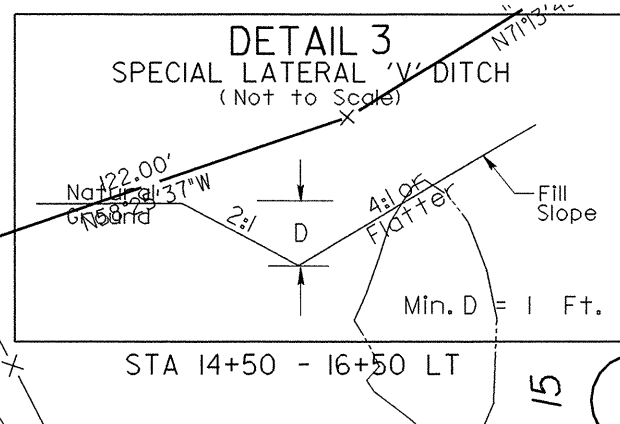
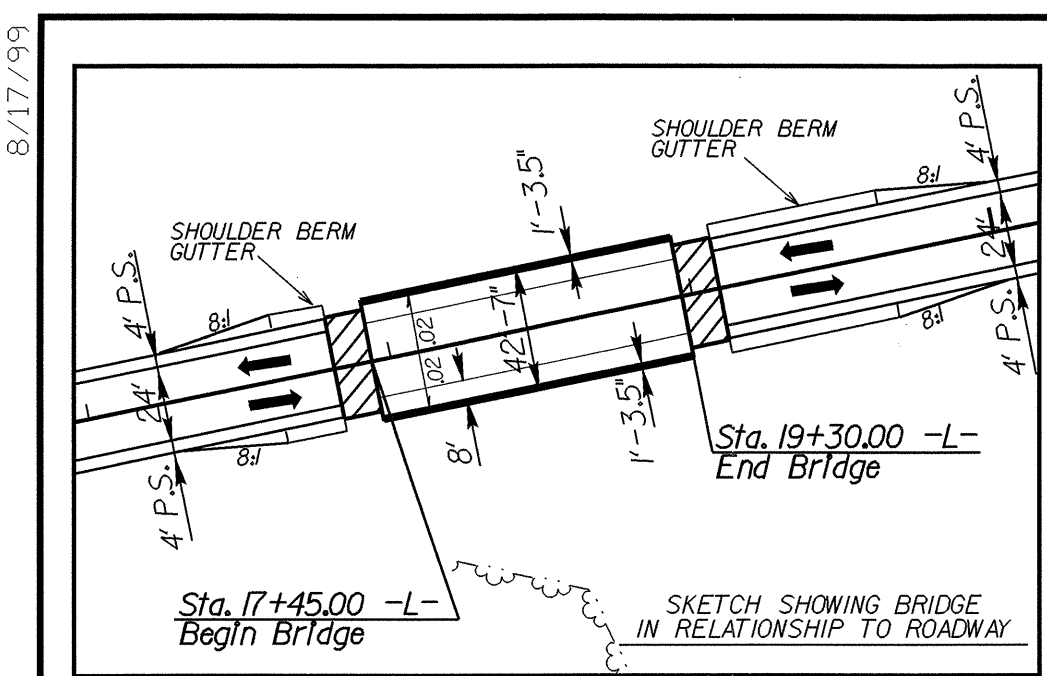
**TEMPORARY SHIFT 1**  
 PI Sta 10+33.34  
 Δ = 6° 45' 13.3" (LT)  
 D = 14' 59" 56.0"  
 L = 45.03'  
 T = 22.54'  
 R = 382.00'

**TEMPORARY SHIFT 1**  
 PI Sta 12+58.00  
 Δ = 10° 24' 24.0" (LT)  
 D = 14' 59" 56.0"  
 L = 69.38'  
 T = 34.79'  
 R = 382.00'

**TEMPORARY SHIFT 1**  
 PI Sta 14+93.16  
 Δ = 8° 55' 20.1" (LT)  
 D = 14' 59" 56.0"  
 L = 59.49'  
 T = 29.80'  
 R = 382.00'

**TEMPORARY SHIFT 2**  
 PI Sta 10+00.00  
 Δ = 26° 00' 30.2" (RT)  
 D = 6' 51" 42.4"  
 L = 379.03'  
 T = 192.84'  
 DS = 50  
 SE = 0.06

**TEMPORARY SHIFT 1**  
 PI Sta 9+63.21  
 Δ = 12° 24' 30.2" (LT)  
 D = 4' 30" 00.0"  
 L = 275.74'  
 T = 138.41'  
 R = 1,273.24'



6" DECK DRAINS @ 12' 00" BEG BRIDGE TO 18+10 & 18+70 TO END BRIDGE LT & RT  
 B623-1  
 PINC 16+24.47  
 STA. 21+85.77 -L-  
 81.52' LT.  
 EDNA ALICE HILL  
 DB 456 PG 187

MATCHLINE STA. 22+00.00  
SEE SHEET UO-2