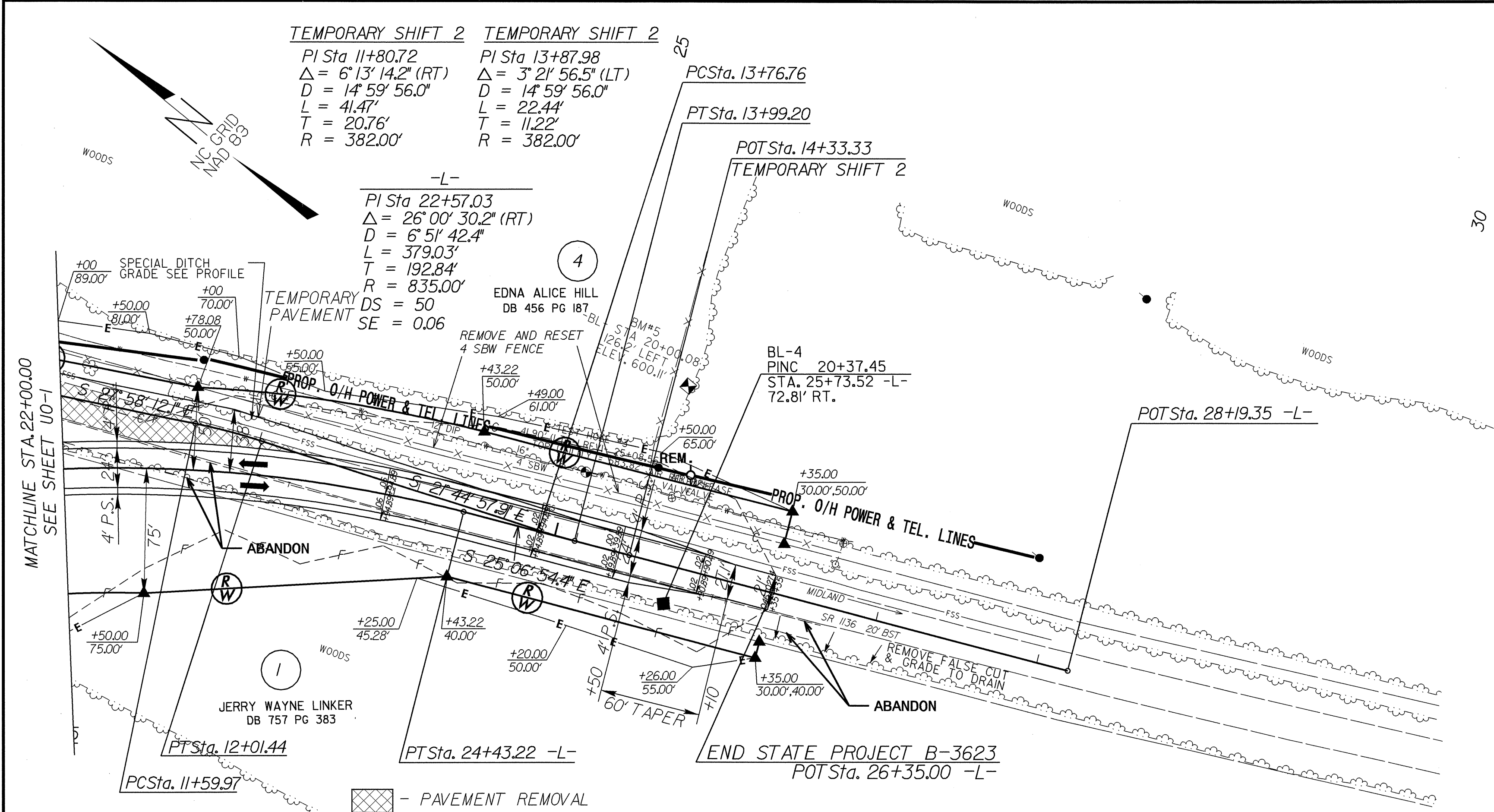
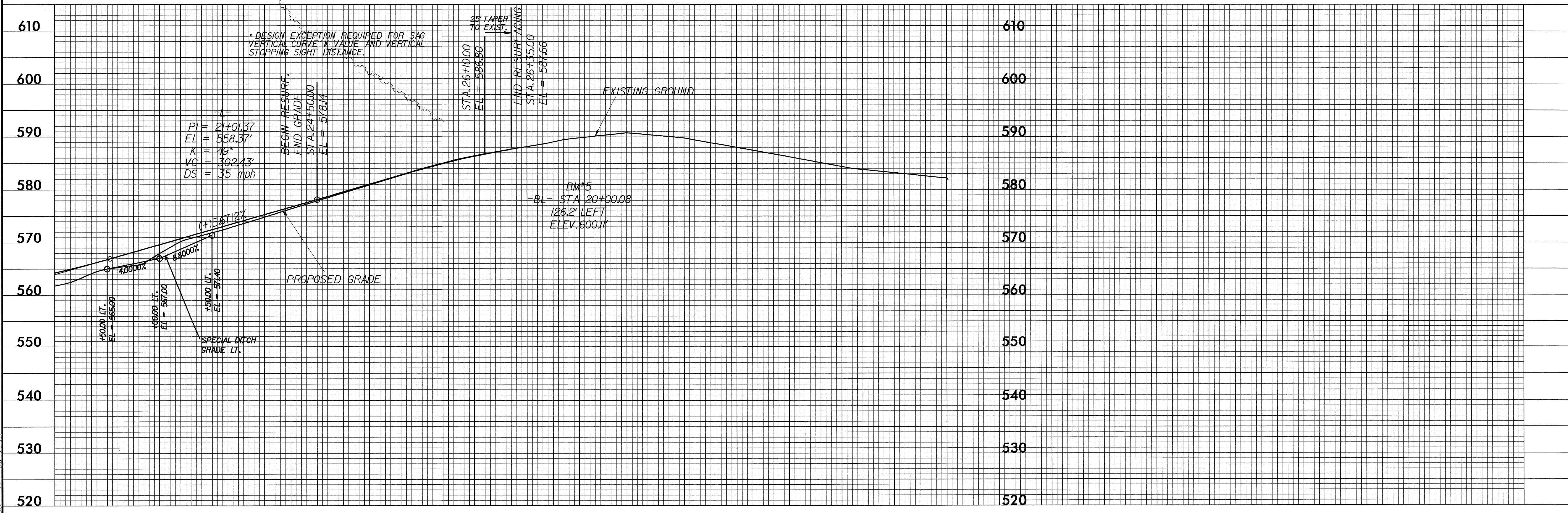


UTILITIES BY OTHERS

NOTE:
ALL PROPOSED UTILITY WORK
SHOWN ON THIS SHEET WILL
BE DONE BY OTHERS



* DESIGN EXCEPTION REQUIRED FOR SAG
VERTICAL CURVE K VALUE AND VERTICAL
STOPPING SIGHT DISTANCE.



* DESIGN EXCEPTION REQUIRED FOR SAG
VERTICAL CURVE K VALUE AND VERTICAL
STOPPING SIGHT DISTANCE.

=L=
PI = 21+01.37
EI = 558.37'
K = 49'
VC = 302.43'
DS = 35 mph

PROPOSED GRADE

EXISTING GROUND

25' TAPER
TO EXIST.

STA. 26+10.00
EL. = 586.80

END RESURFACING
STA. 26+35.00
EL. = 587.66

BM*5
-BL- STA 20+00.08
126.2' LEFT
ELEV. 600.11

SPECIAL DITCH
GRADE LI.

+50.00 LI.
EL. = 565.00

+40.00 LI.
EL. = 567.00

+50.00 LI.
EL. = 571.00

03-DEC-2003 13:24 L:\Utilities\UO-2\Proj\B3623\ut-U02-r.dwg 05-psh.dgn