

STATE	STATE PROJECT REFERENCE NO.	SHEET NO.	TOTAL SHEETS
N.C.	B-3623	1	
WBS NO.	F. A. PROJ. NO.	DESCRIPTION	
33171.1.1	BRZ-1136(2)	P.E.	
33171.2.1	BRZ-1136(2)	RW	
33171.3.2	BRZ-1136(6)	CONST.# UTIL.	

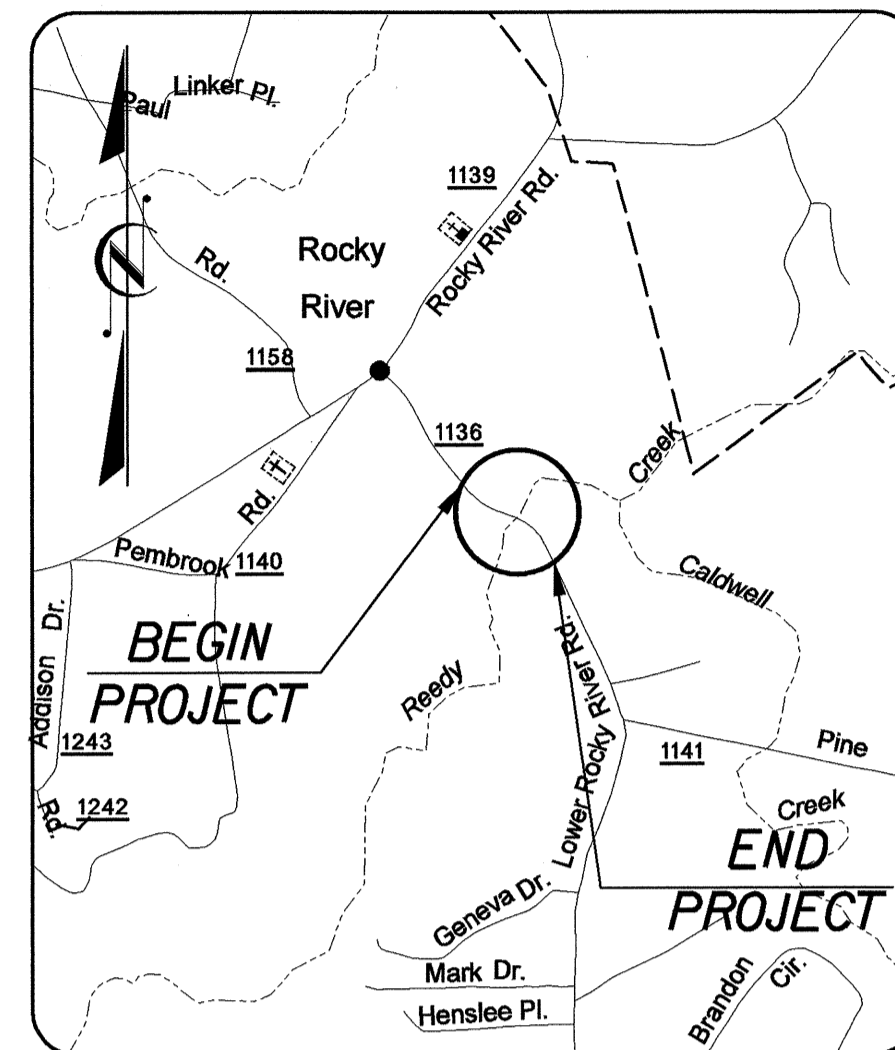
STATE OF NORTH CAROLINA
DIVISION OF HIGHWAYS

CABARRUS COUNTY

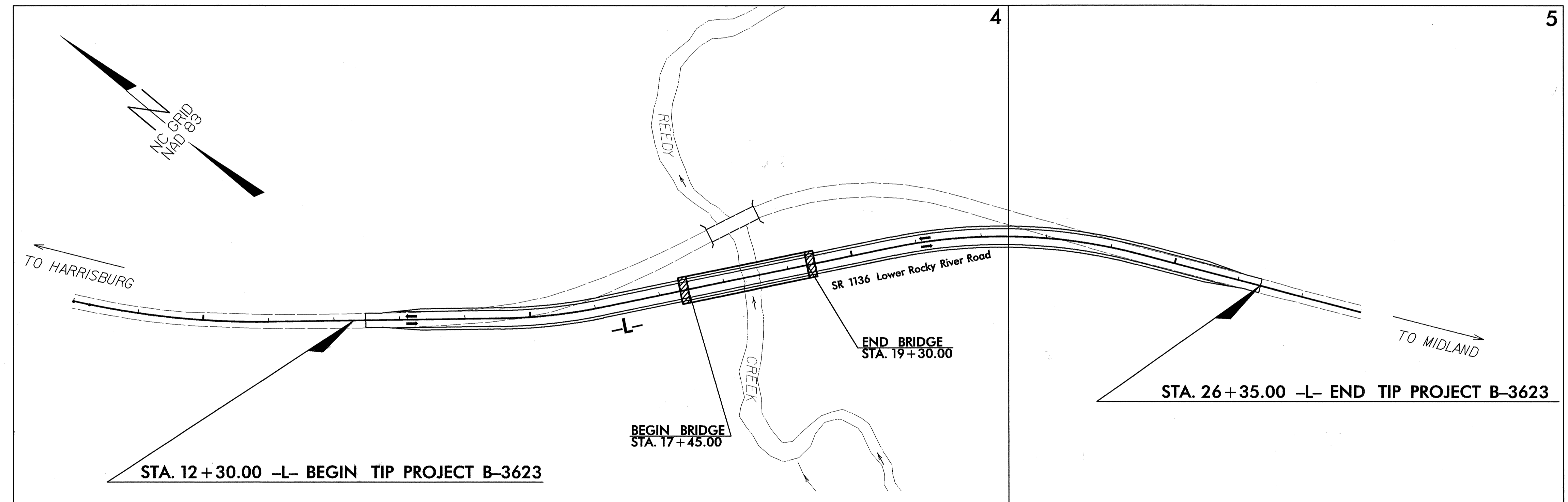
LOCATION: BRIDGE NO. 176 OVER REEDY CREEK ON SR 1136 (LOWER ROCKY RIVER ROAD)

TYPE OF WORK: GRADING, DRAINAGE, STRUCTURE, AND PAVING

See Sheet 1-A For Index of Sheets
See Sheet 1-B For Conventional Symbols



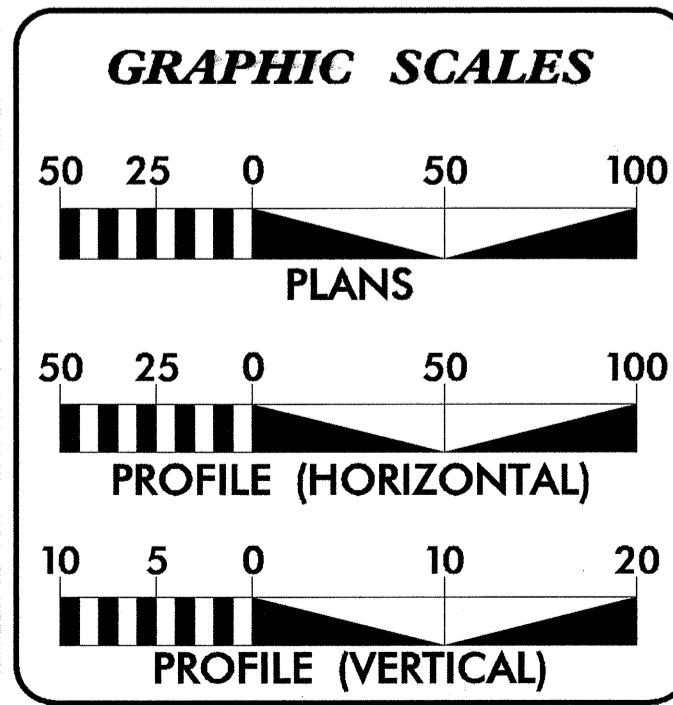
VICINITY MAP



* DESIGN EXCEPTION REQUIRED FOR SAG VERTICAL CURVE K VALUE AND VERTICAL STOPPING SIGHT DISTANCE.

NCDOT CONTACT: TERESA BRUTON, P.E., PROJECT ENGINEER - DESIGN SERVICES

CONTRACT: C200828 TIP PROJECT: B-3623



DESIGN DATA

ADT 2003 =	3400
ADT 2025 =	8000
DHV =	11 %
D =	60 %
T =	3 % *
V =	50 MPH
* TTST 1%	DUAL 2%

PROJECT LENGTH

LENGTH ROADWAY TIP PROJECT B-3623	=	0.231 mi
LENGTH STRUCTURE TIP PROJECT B-3623	=	0.035 mi
TOTAL LENGTH TIP PROJECT B-3623	=	0.266 mi

Prepared in the Office of:
WANG ENGINEERING COMPANY, INC.
CARY, N.C.
FOR NORTH CAROLINA DEPARTMENT OF TRANSPORTATION
2002 STANDARD SPECIFICATIONS

RIGHT OF WAY DATE: **MARCH 24, 2003**

LETTING DATE: **SEPTEMBER 21, 2004**

GREG S. PURVIS, P. E.
PROJECT ENGINEER

SCOTT L. KENNEDY
PROJECT DESIGN ENGINEER

HYDRAULICS ENGINEER

12/17/03
SIGNATURE: *[Signature]* P.E.
SEAL 9334

ROADWAY DESIGN ENGINEER

12/1/03
SIGNATURE: *[Signature]* P.E.
SEAL 22999

DIVISION OF HIGHWAYS
STATE OF NORTH CAROLINA

[Signature] P.E.
STATE DESIGN ENGINEER

DEPARTMENT OF TRANSPORTATION
FEDERAL HIGHWAY ADMINISTRATION

APPROVED
DIVISION ADMINISTRATOR

DATE

SYTIME\$\$\$\$\$DCN\$\$\$\$\$

\\w01w01p01\B3623_TIP_1\SP_050 12/01/2003 09:38:03 PM