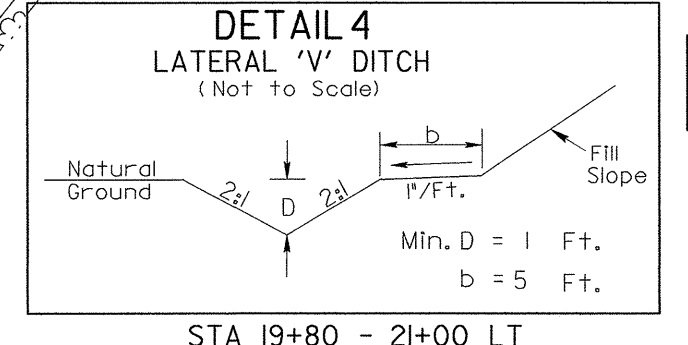
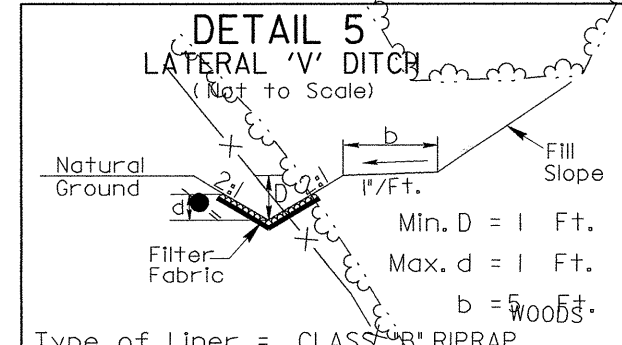
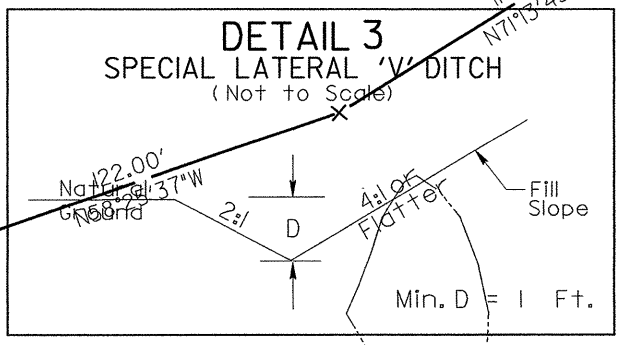
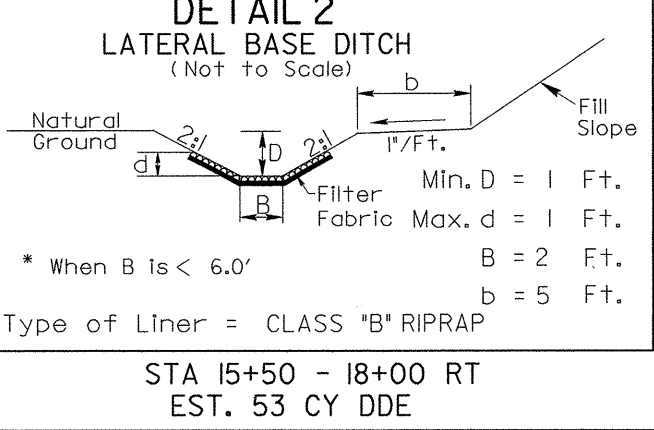
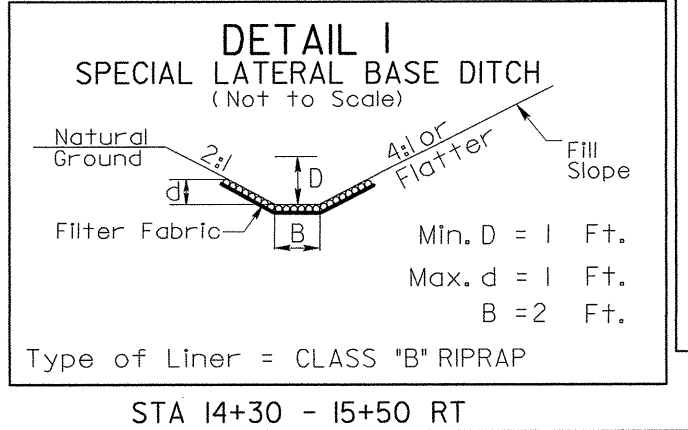
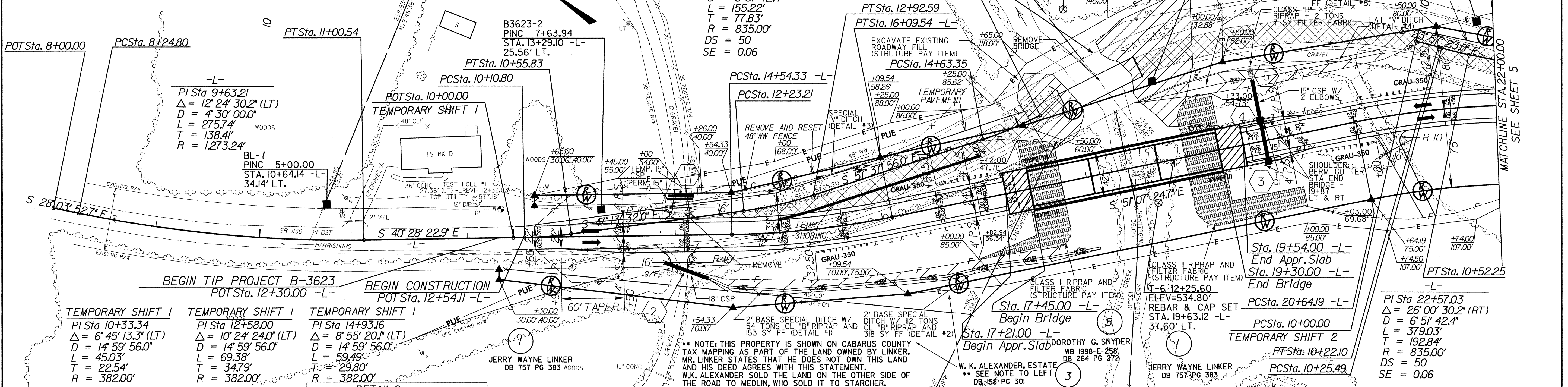


* DESIGN EXCEPTION REQUIRED FOR SAG VERTICAL CURVE K VALUE AND VERTICAL STOPPING SIGHT DISTANCE.
 PAVEMENT REMOVAL (OBLITERATE)

PLEASE NOTE: DO NOT DISTURB THE EXISTING WATER LINE OR THE EXISTING 6" FORCE MAIN DURING CONSTRUCTION



6" DECK DRAINS @ 12' 00" BEG BRIDGE TO 18+00 & 18+70 TO END BRIDGE LT & RT
 B623-1
 PINC 16+24.47
 STA. 21+85.77 -L- 81.52' LT.
 EDNA ALICE HILL DB 456 PG 187



BRIDGE HYDRAULIC DATA

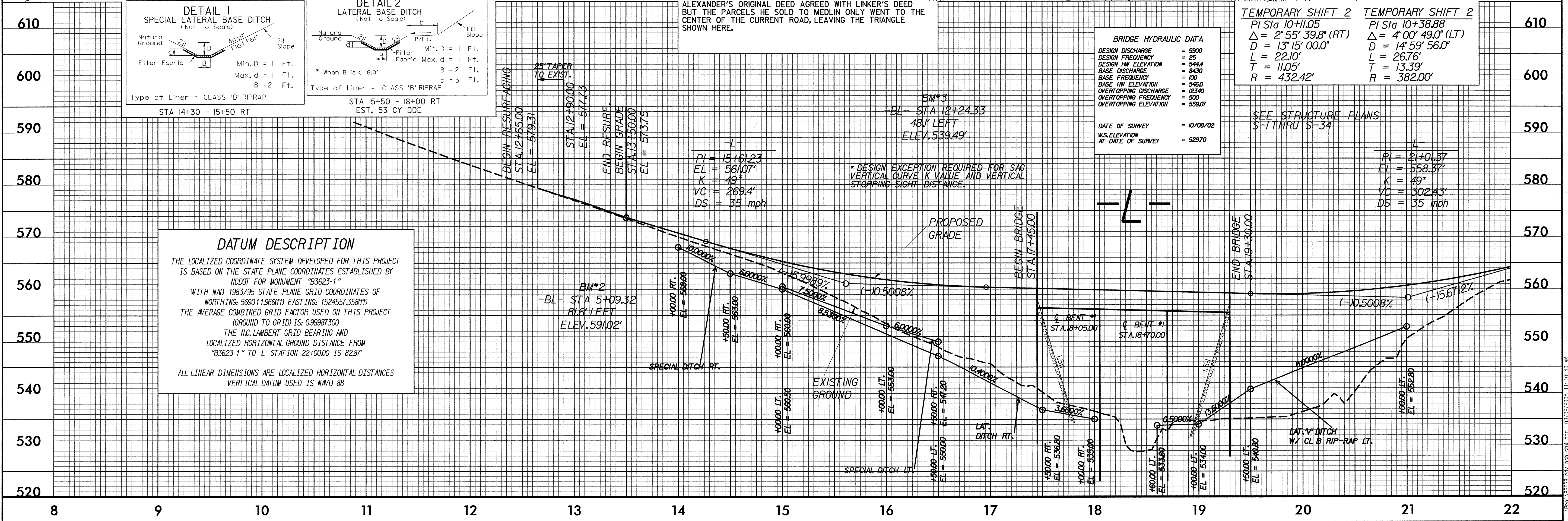
DESIGN DISCHARGE	= 5500
DESIGN FREQUENCY	= 25
DESIGN HW ELEVATION	= 544.4
BASE DISCHARGE	= 8430
BASE FREQUENCY	= 100
BASE HW ELEVATION	= 546.0
OVERTOPPING DISCHARGE	= 12340
OVERTOPPING FREQUENCY	= 500
OVERTOPPING ELEVATION	= 559.07

DATE OF SURVEY = 10/08/02
 W.S. ELEVATION AT DATE OF SURVEY = 52970

TEMPORARY SHIFT 2	PI Sta 10+11.05
	Δ = 2° 55' 39.8" (RT)
	D = 13' 15' 00.0"
	L = 22.10'
	T = 11.05'
	R = 432.42'

TEMPORARY SHIFT 2	PI Sta 10+38.88
	Δ = 4° 00' 49.0" (LT)
	D = 14' 59' 56.0"
	L = 26.76'
	T = 13.39'
	R = 382.00'

DATUM DESCRIPTION
 THE LOCALIZED COORDINATE SYSTEM DEVELOPED FOR THIS PROJECT IS BASED ON THE STATE PLANE COORDINATES ESTABLISHED BY NCDOT FOR MONUMENT "B3623-1"
 WITH NAD 1983/95 STATE PLANE GRID COORDINATES OF NORTHING: 569011.966(Ft) EASTING: 1524557.358(Ft)
 THE AVERAGE COMBINED GRID FACTOR USED ON THIS PROJECT (GROUND TO GRID) IS: 0.99987300
 THE N.C. LAMBERT GRID BEARING AND LOCALIZED HORIZONTAL DISTANCE FROM "B3623-1" TO -L- STATION 22+00.00 IS 82.87'
 ALL LINEAR DIMENSIONS ARE LOCALIZED HORIZONTAL DISTANCES
 VERTICAL DATUM USED IS NAVD 88



03/02/2005 11:10:10 AM
 C:\Users\gsp\Documents\B3623-1.dwg