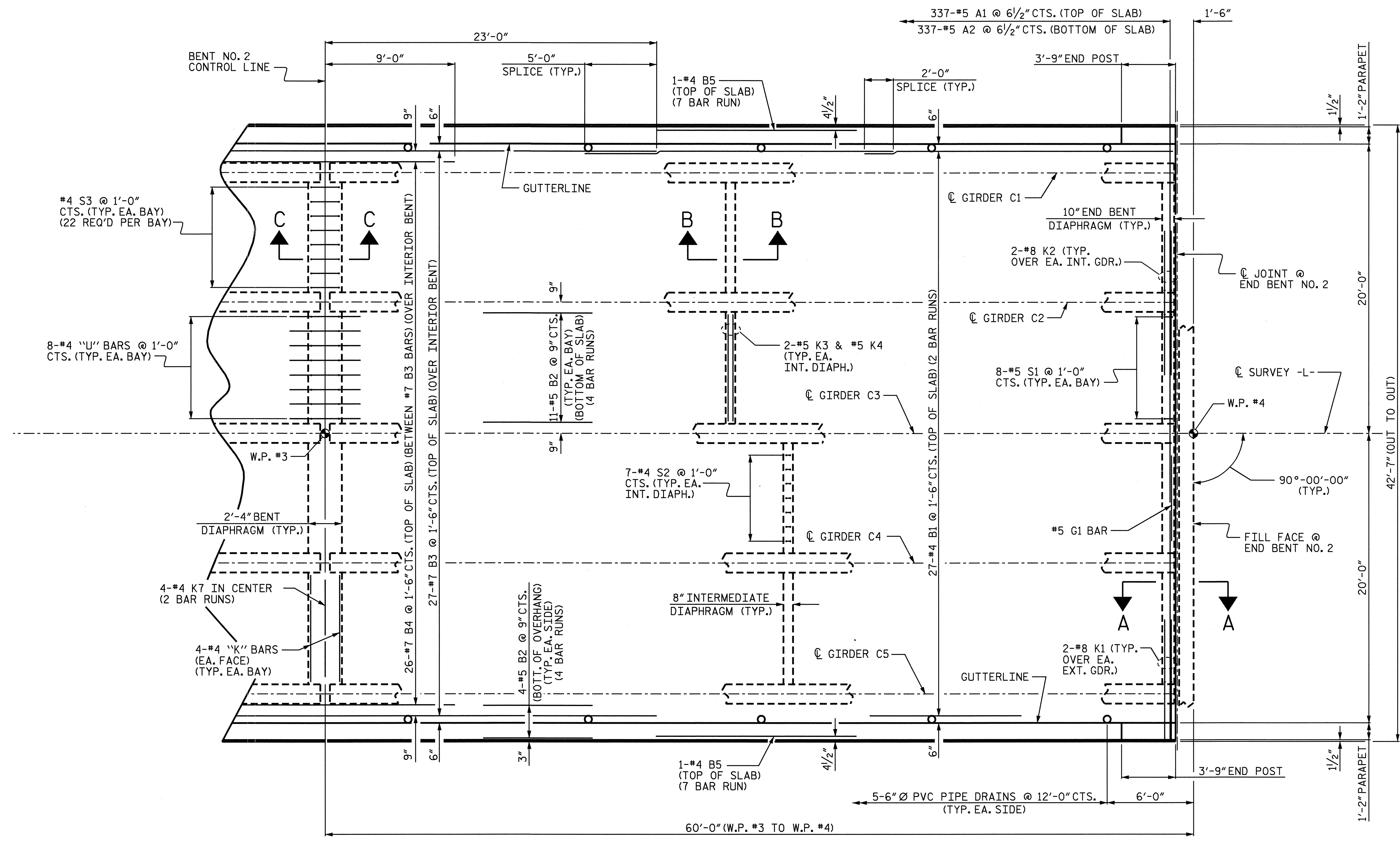
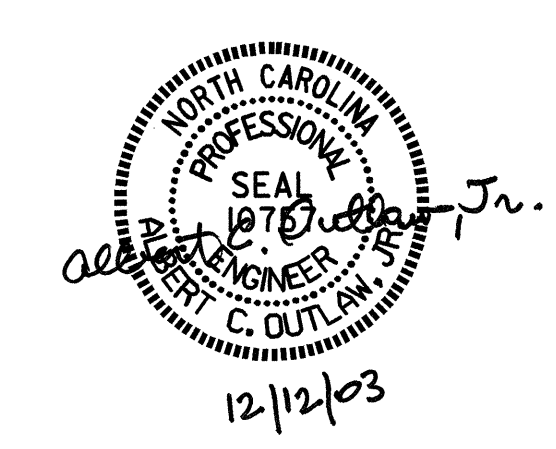


NOTES:
 FOR PARAPET, END POST DETAILS AND REINFORCING STEEL, SEE "CONCRETE PARAPET DETAILS" SHEETS.
 FOR SECTIONS, SEE "TYPICAL SECTIONS", SHEET 2 OF 2.



PLAN OF SPAN "C"

PROJECT NO. B-3623
CABARRUS COUNTY
 STATION: 18+37.50 -L-



DRAWN BY: P.C. BREWER DATE: 4/16/03
 CHECKED BY: S.B. WILLIAMS DATE: 5/8/03

STATE OF NORTH CAROLINA DEPARTMENT OF TRANSPORTATION RALEIGH					
SUPERSTRUCTURE PLAN OF SPAN "C"					
REVISIONS					SHEET NO.
NO.	BY:	DATE:	NO.	BY:	DATE:
1			3		
2			4		
					S-8
					TOTAL SHEETS
					34