

NOTES

ALL PRESTRESSING STRANDS SHALL BE 7-WIRE LOW-RELAXATION GRADE 270 STRANDS AND SHALL CONFORM TO AASHTO M203 EXCEPT FOR SAMPLING REQUIREMENTS WHICH SHALL BE IN ACCORDANCE WITH THE STANDARD SPECIFICATIONS.

TIE ROD ASSEMBLY SHALL BE AASHTO M270 GRADE 36 STRUCTURAL STEEL.

APPLY EPOXY PROTECTIVE COATING TO END OF GIRDER SURFACES. INDICATED IN ELEVATION VIEW. FOR EPOXY PROTECTIVE COATING, SEE SPECIAL PROVISIONS.

EMBEDDED PLATE "B-1" SHALL BE GALVANIZED IN ACCORDANCE WITH THE STANDARD SPECIFICATIONS. BEVEL EDGES OF PLATE "B-1" TO GIVE CLOSE FIT BUT NOT TIGHT FIT TO STEEL CASTING FORM.

ANCHOR STUDS SHALL CONFORM TO AASHTO M169 GRADES 1010 THROUGH 1020 OR APPROVED EQUAL, AND SHALL MEET THE TYPE "B" REQUIREMENTS OF SUBSECTION 7.3 OF THE ANSI/AASHTO/AWS D1.5 BRIDGE WELDING CODE.

AT ENDS OF GIRDERS TO BE EMBEDDED IN CONCRETE DIAPHRAGMS, PRESTRESSING STRANDS MAY EXTEND A MAXIMUM OF 2" BEYOND THE GIRDER ENDS. OTHERWISE, PRESTRESSING STRANDS SHALL BE CUT FLUSH WITH THE GIRDER ENDS.

THE TRANSFER OF LOAD FROM THE ANCHORAGES TO THE GIRDER SHALL BE DONE WHEN CONCRETE HAS REACHED A COMPRESSIVE STRENGTH OF NOT LESS THAN 5000 PSI.

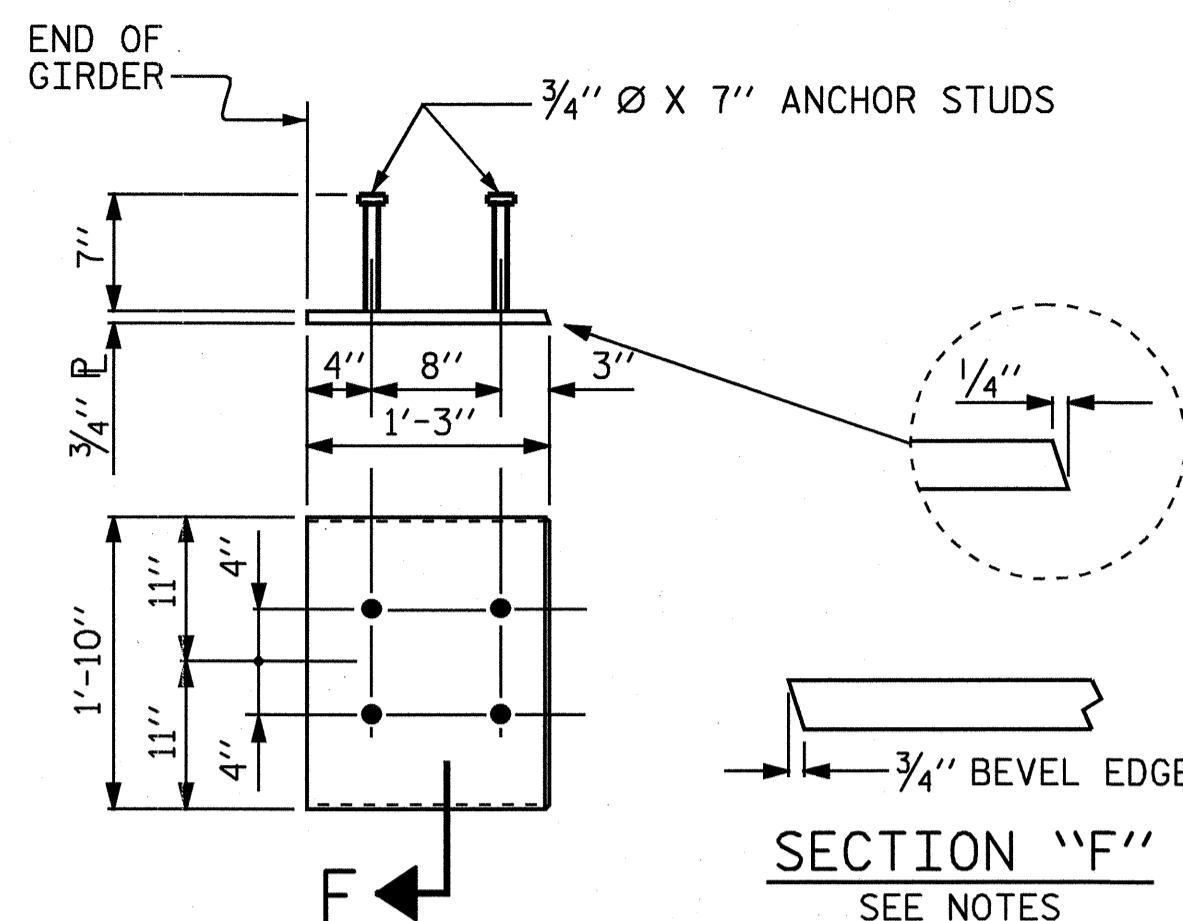
DEPENDING ON THE TYPE OF SYSTEM USED TO SUPPORT THE DECK SLAB FORMS, PRESET ANCHORS MAY BE NECESSARY IN THE PRESTRESSED CONCRETE GIRDER.

THE TOP SURFACE OF THE GIRDER, EXCLUDING THE OUTSIDE 4", SHALL BE RAKED TO A DEPTH OF 1/4".

FOR VERTICAL CRACKS IN PRESTRESSED CONCRETE GIRDERS PRIOR TO DETENSIONING, SEE SPECIAL PROVISIONS.

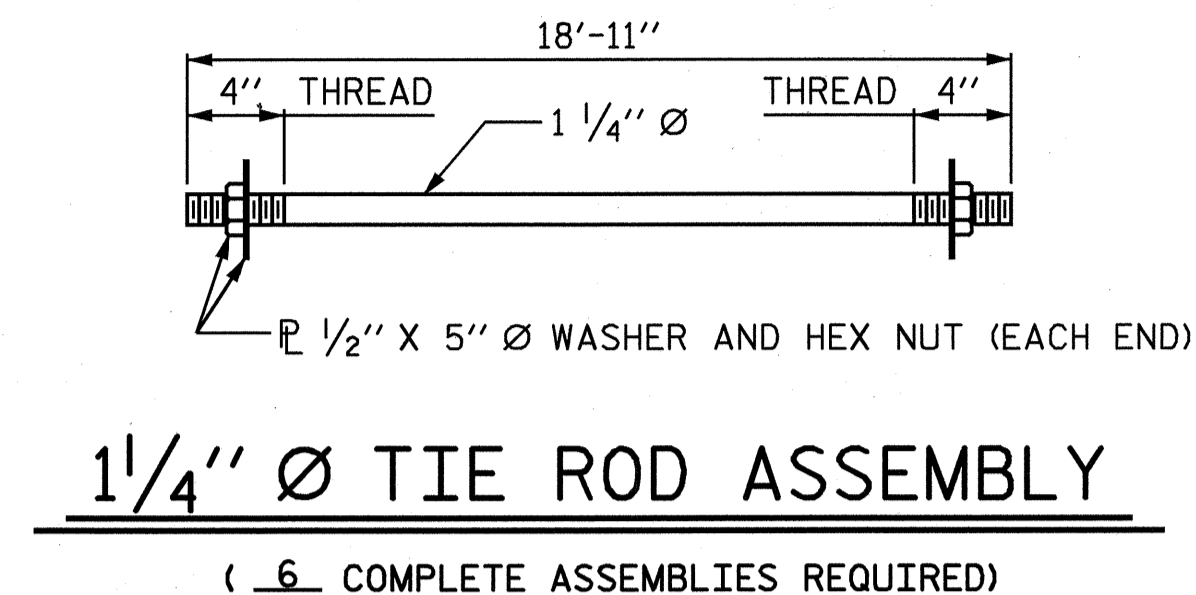
ALL REINFORCING STEEL SHALL BE GRADE 60.

FOR PRESTRESSED CONCRETE MEMBERS, SEE SPECIAL PROVISIONS.



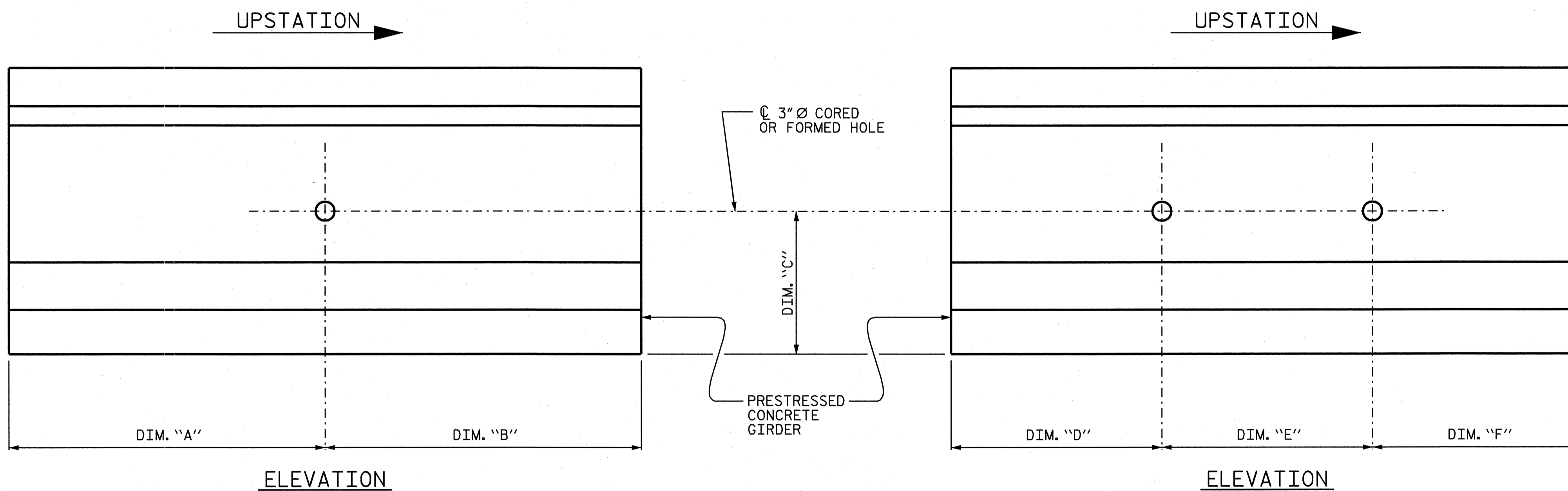
EMBEDDED PLATE "B-1" DETAILS FOR AASHTO TYPE III GIRDER

TWO EMBEDDED PLATES "B-1" ARE REQUIRED FOR EACH GIRDER.

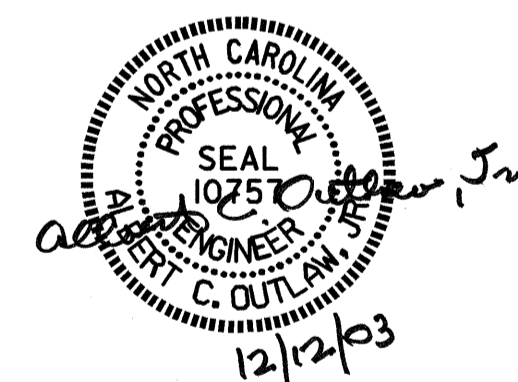


1/4" Ø TIE ROD ASSEMBLY

(6 COMPLETE ASSEMBLIES REQUIRED)



TIE ROD PLACEMENT DETAILS



PROJECT NO. B-3623
 CABARRUS COUNTY
 STATION: 18+37.50 -L-

TIE ROD PLACEMENT TABLE																				
SPAN "A"							SPAN "B"							SPAN "C"						
	DIM. "A"	DIM. "B"	DIM. "C"	DIM. "D"	DIM. "E"	DIM. "F"		DIM. "A"	DIM. "B"	DIM. "C"	DIM. "D"	DIM. "E"	DIM. "F"		DIM. "A"	DIM. "B"	DIM. "C"	DIM. "D"	DIM. "E"	DIM. "F"
GIRDER A1	27'-1/2"	31'-1/2"	1'-10"	—	—	—	GIRDER B1	30'-1"	34'-1"	1'-10"	—	—	—	GIRDER C1	27'-1/2"	31'-1/2"	1'-10"	—	—	—
GIRDER A2	27'-1/2"	31'-1/2"	1'-10"	—	—	—	GIRDER B2	30'-1"	34'-1"	1'-10"	—	—	—	GIRDER C2	27'-1/2"	31'-1/2"	1'-10"	—	—	—
GIRDER A3	—	—	1'-10"	27'-1/2"	4'-0"	27'-1/2"	GIRDER B3	—	—	1'-10"	30'-1"	4'-0"	30'-1"	GIRDER C3	—	—	1'-10"	27'-1/2"	4'-0"	27'-1/2"
GIRDER A4	31'-1/2"	27'-1/2"	1'-10"	—	—	—	GIRDER B4	34'-1"	30'-1"	1'-10"	—	—	—	GIRDER C4	31'-1/2"	27'-1/2"	1'-10"	—	—	—
GIRDER A5	31'-1/2"	27'-1/2"	1'-10"	—	—	—	GIRDER B5	34'-1"	30'-1"	1'-10"	—	—	—	GIRDER C5	31'-1/2"	27'-1/2"	1'-10"	—	—	—

DRAWN BY : P.C. BREWER DATE : 4/24/03
 CHECKED BY : S.B. WILLIAMS DATE : 5/9/03

REVISIONS					SHEET NO.
NO.	BY:	DATE:	NO.	BY:	DATE:
1			3		
2			4		

S-13
 TOTAL SHEETS 34