

### TRANSVERSE CONSTRUCTION JOINT DETAIL

NOTE: REINFORCING STEEL IN SLAB NOT SHOWN.  
LONGITUDINAL REINFORCING STEEL SHALL BE CONTINUOUS THRU JOINT

### SUPERSTRUCTURE REINFORCING STEEL LENGTHS ARE BASED ON THE FOLLOWING MINIMUM SPLICE LENGTHS

BAR SIZE	SUPERSTRUCTURE EXCEPT APPROACH SLABS, PARAPET, AND BARRIER RAIL		APPROACH SLABS		PARAPET AND BARRIER RAIL
	EPOXY COATED	UNCOATED	EPOXY COATED	UNCOATED	
#4	2'-0"	1'-9"	2'-0"	1'-9"	2'-9"
#5	2'-6"	2'-2"	2'-6"	2'-2"	3'-5"
#6	3'-0"	2'-7"	3'-10"	2'-7"	4'-4"
#7	5'-3"	3'-6"	---	---	---
#8	6'-10"	4'-7"	---	---	---

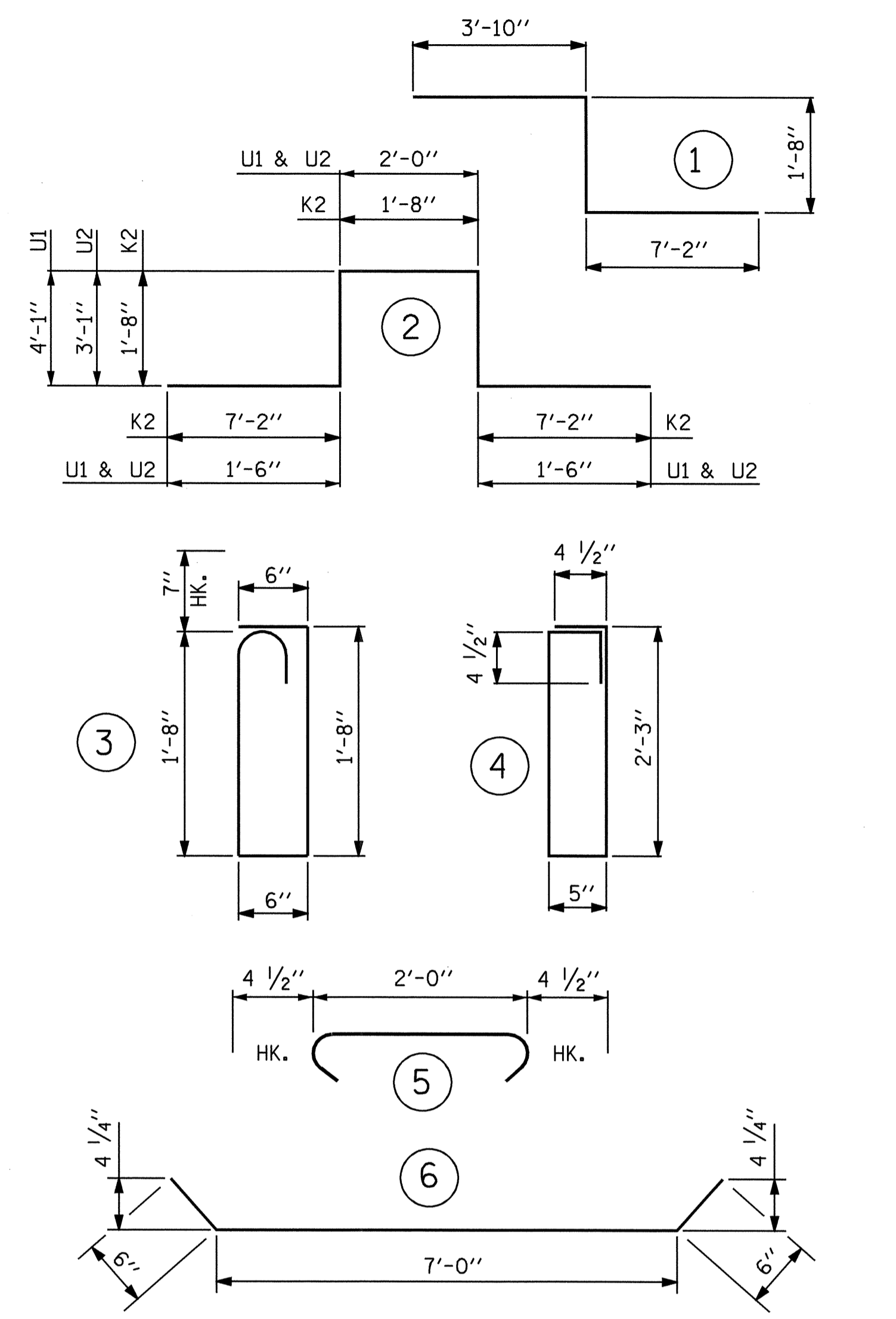
### BILL OF MATERIAL

#### SPAN "A", "B", & "C"

BAR NO.	SIZE	TYPE	LENGTH	WEIGHT	
* A1	337	#5	STR 42'-3"	14850	
A2	337	#5	STR 42'-3"	14850	
* B1	108	#4	STR 21'-5"	1545	
B2	208	#5	STR 47'-4"	10269	
* B3	54	#7	STR 47'-6"	5243	
* B4	52	#7	STR 18'-9"	1993	
* B5	14	#4	STR 27'-7"	258	
* B6	27	#4	STR 26'-0"	469	
* G1	2	#5	STR 42'-3"	88	
* K1	8	#8	1	12'-8"	271
* K2	12	#8	2	19'-4"	619
K3	24	#5	6	8'-0"	200
K4	24	#5	STR	7'-8"	192
K5	16	#4	STR	5'-7"	60
K6	48	#4	STR	7'-2"	230
K7	16	#4	STR	18'-9"	200
* S1	64	#5	3	4'-11"	328
S2	84	#4	4	6'-1"	341
S3	176	#4	5	2'-9"	323
U1	48	#4	2	13'-2"	422
U2	16	#4	2	11'-2"	119

REINFORCING STEEL = 27,206 LBS  
EPOXY COATED REINFORCING STEEL = 25,664 LBS  
\* THESE BARS ARE EPOXY COATED

### BAR TYPES

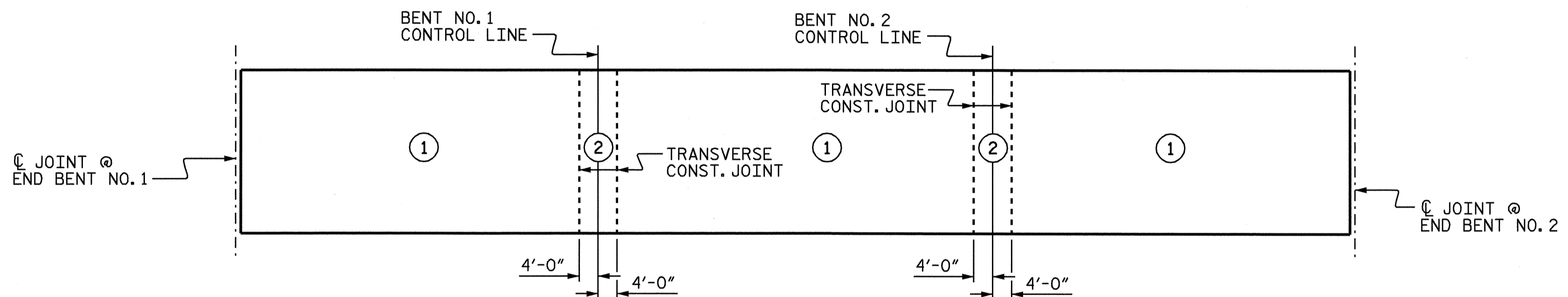


ALL BAR DIMENSIONS ARE OUT TO OUT

### SUPERSTRUCTURE BILL OF MATERIAL

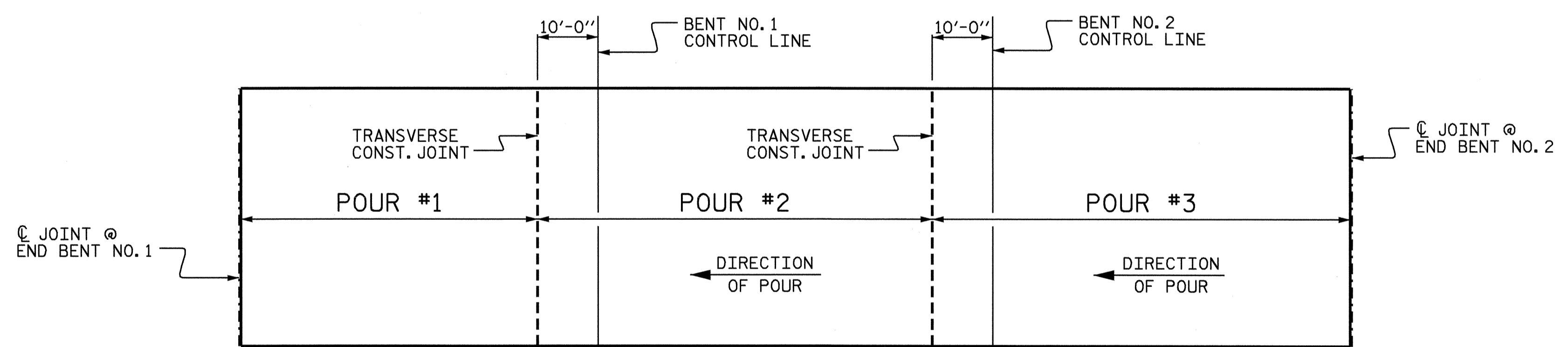
	CLASS AA CONCRETE ( CU. YDS. )	REINFORCING STEEL ( LBS. )	EPOXY COATED REINFORCING STEEL ( LBS. )
SPAN "A", "B", & "C"		27,206 LBS	25,664 LBS
POUR #1	68.9		
POUR #2	99.7		
POUR #3	106.4		
TOTALS **	275.0	27,206 LBS	25,664 LBS

\*\* QUANTITIES FOR PARAPET AND END POSTS ARE NOT INCLUDED

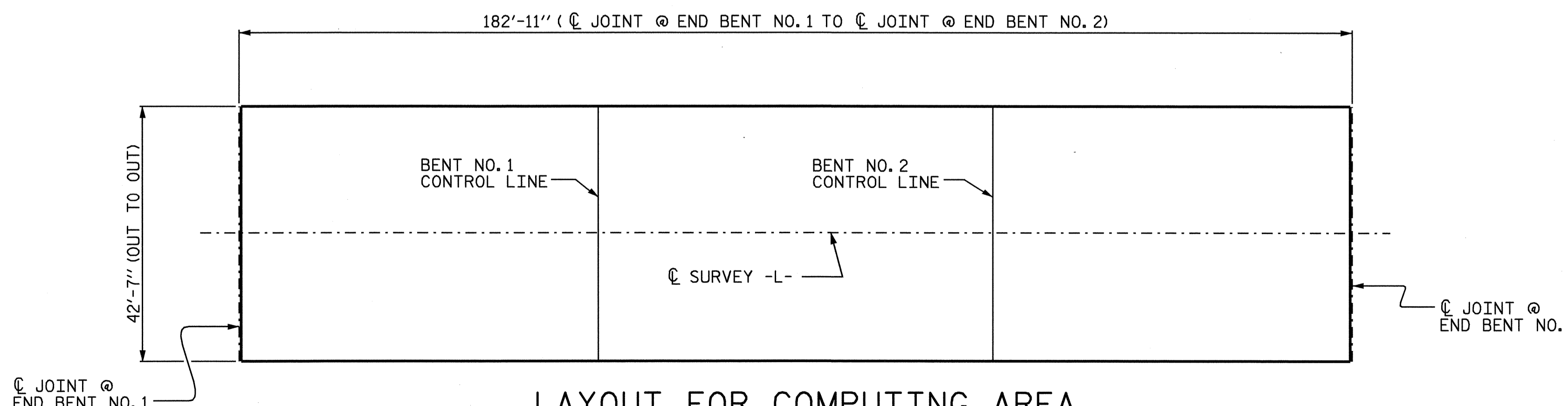


### OPTIONAL POURING SEQUENCE

POUR ② CAN NOT BE STARTED UNTIL BOTH ADJACENT ① POURS REACH A MINIMUM OF 3000 PSI.



### POURING SEQUENCE



LAYOUT FOR COMPUTING AREA  
OF REINFORCED CONCRETE DECK SLAB  
(SQ. FT. = 7789)

### GROOVING BRIDGE FLOORS

APPROACH SLABS	1788 SQ.FT.
BRIDGE DECK	6749 SQ.FT.
TOTAL	8537 SQ.FT.

PROJECT NO. B-3623  
CABARRUS COUNTY  
STATION: 18+37.50 -L-



STATE OF NORTH CAROLINA  
DEPARTMENT OF TRANSPORTATION  
RALEIGH  
STANDARD  
SUPERSTRUCTURE  
BILL OF MATERIAL

REVISIONS						TOTAL SHEETS
NO.	BY:	DATE:	NO.	BY:	DATE:	34
1			3			
2			4			

ASSEMBLED BY : P.C. BREWER DATE: 5/1/03  
CHECKED BY : S.B. WILLIAMS DATE: 5/13/03  
DRAWN BY : JMB 5/87 REV. 6/1/94 EEM/GRP  
CHECKED BY : SJD 9/87