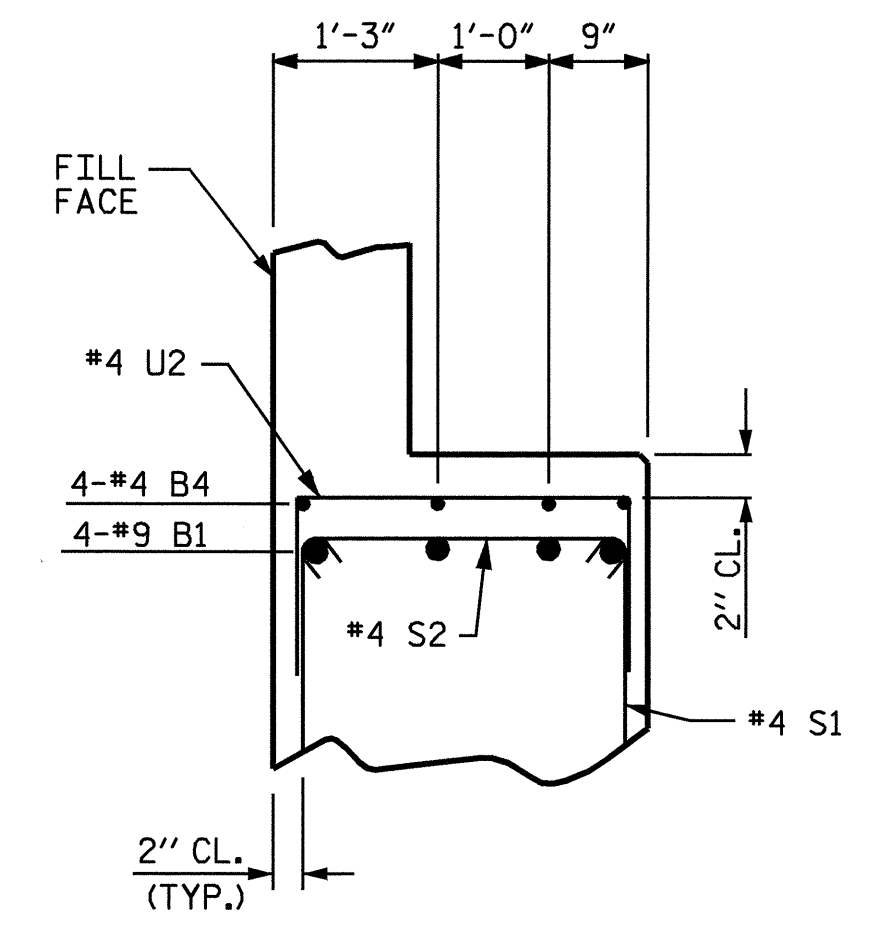


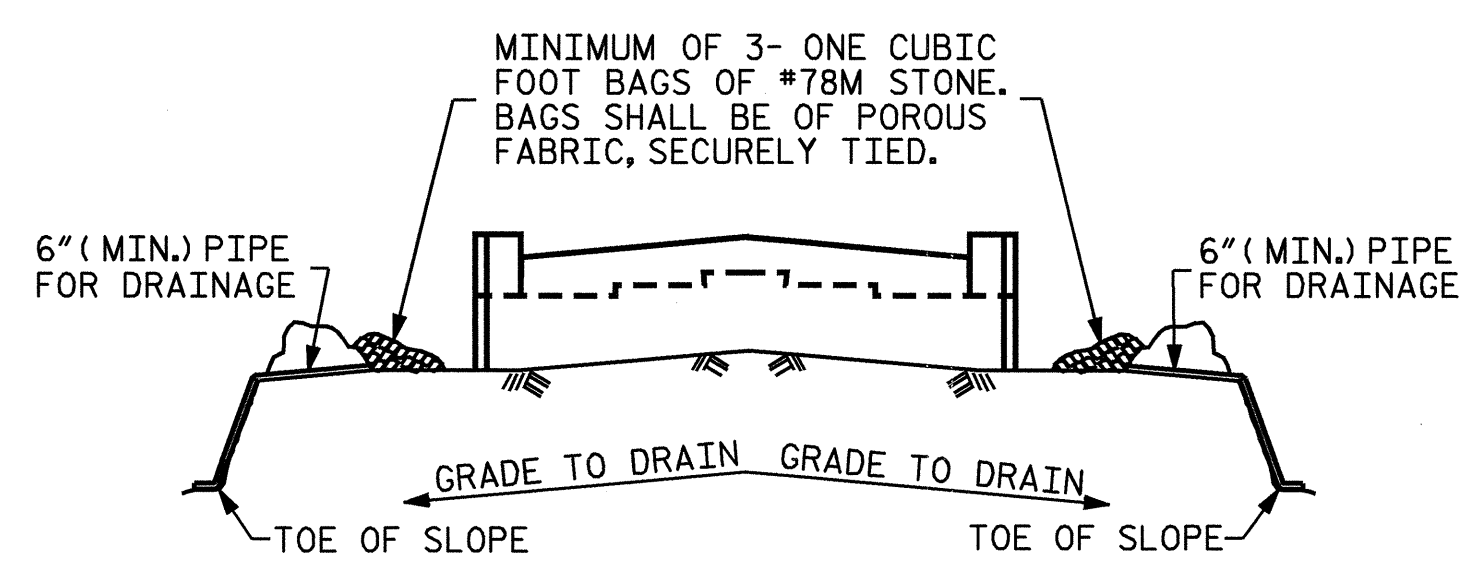
SECTION A-A



PARTIAL SECTION B-B

BAR TYPES				BILL OF MATERIAL		
END BENT No. 1						
BAR	NO.	SIZE	TYPE	LENGTH	WEIGHT	
B1	8	9	1	50'-8"	1378	
B2	2	5	STR	48'-3"	101	
B3	8	4	STR	25'-4"	135	
B4	12	4	STR	2'-11"	23	
B5	12	4	STR	2'-8"	21	
H1	36	5	3	10'-6"	394	
K1	16	4	STR	25'-4"	271	
K2	8	4	STR	3'-2"	17	
S1	54	4	4	7'-8"	277	
S2	54	4	2	3'-5"	123	
S3	18	4	6	6'-6"	78	
U1	42	4	5	3'-8"	103	
U2	9	4	5	5'-8"	34	
V1	84	5	STR	5'-10"	511	
V2	56	5	STR	7'-5"	433	
REINFORCING STEEL (LBS.)				3899		
CLASS A CONCRETE BREAKDOWN						
POUR #1 (CAP & LOWER WINGS)				= 15.9 C.Y.		
POUR #2 (BACKWALL & UPPER WINGS)				= 11.0 C.Y.		
TOTAL CLASS A CONCRETE				= 26.9 C.Y.		
HP 12 X 53 STEEL PILES NO. 9				300 LIN. FT.		

ALL BAR DIMENSIONS ARE OUT TO OUT.

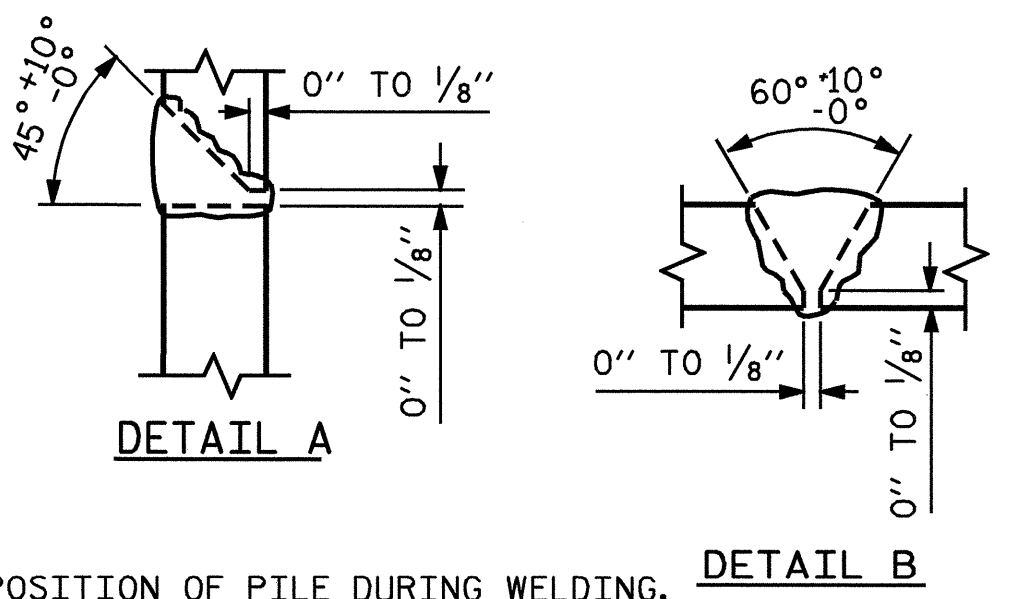
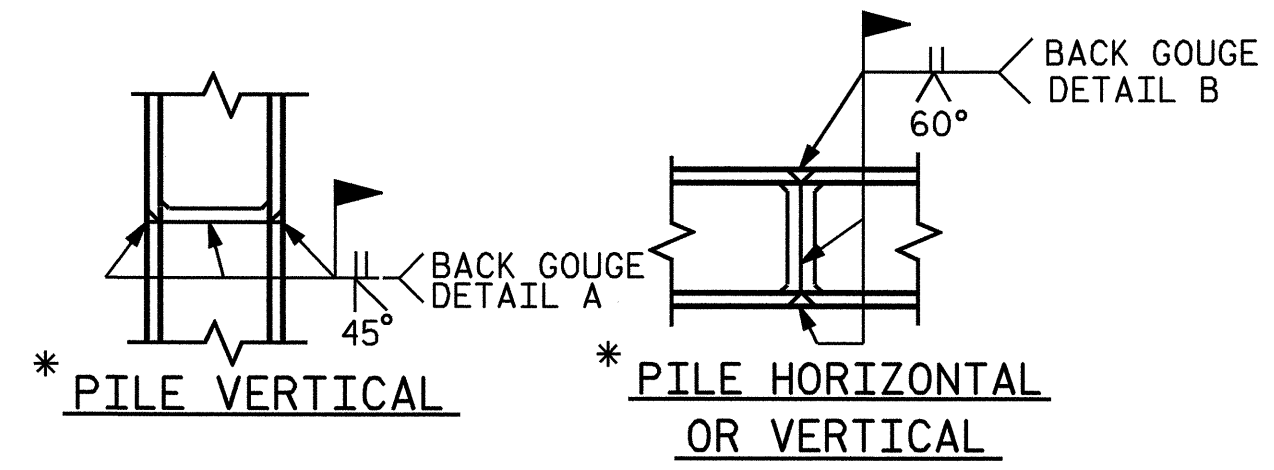


BAGGED STONE AND PIPE SHALL BE PLACED IMMEDIATELY AFTER COMPLETION OF END BENT EXCAVATION. PIPE MAY BE EITHER CONCRETE, CORRUGATED STEEL, CORRUGATED ALUMINUM ALLOY, OR CORRUGATED PLASTIC. PERFORATED PIPE WILL NOT BE ALLOWED.

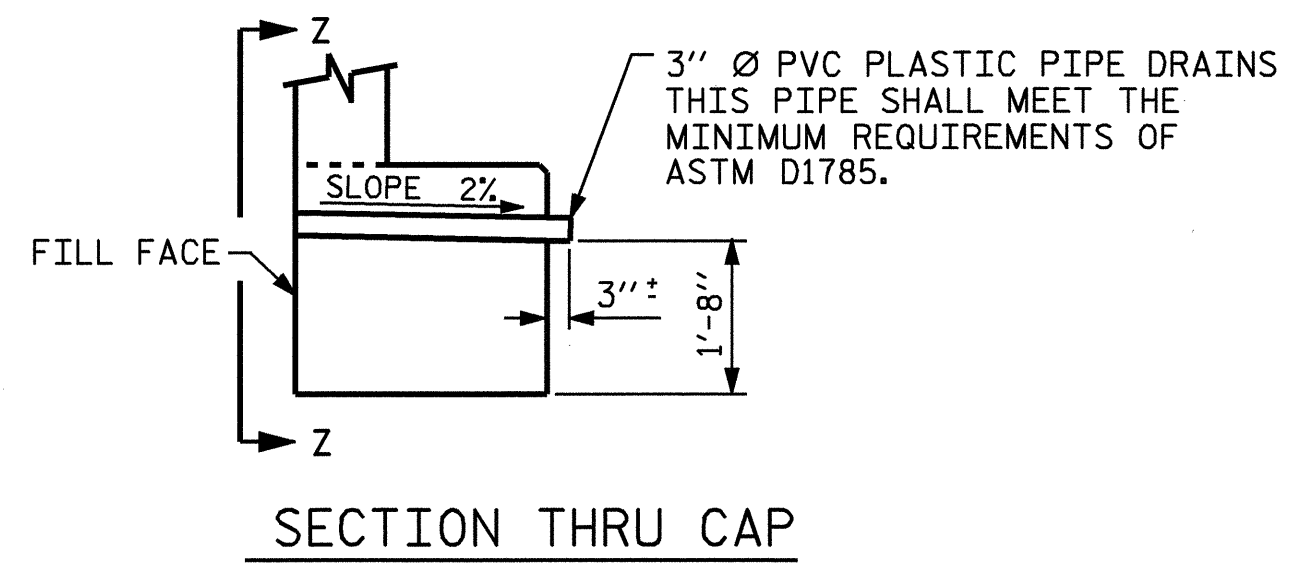
BAGGED STONE SHALL REMAIN IN PLACE UNTIL THE ENGINEER DIRECTS THAT IT BE REMOVED. THE CONTRACTOR SHALL REMOVE AND DISPOSE OF SILT ACCUMULATIONS AT BAGGED STONE WHEN SO DIRECTED BY THE ENGINEER. BAGS SHALL BE REMOVED AND REPLACED WHENEVER THE ENGINEER DETERMINES THAT THEY HAVE DETERIORATED AND LOST THEIR EFFECTIVENESS.

NO SEPARATE PAYMENT WILL BE MADE FOR THIS WORK AND THE ENTIRE COST OF THIS WORK SHALL BE INCLUDED IN THE UNIT CONTRACT PRICE BID FOR THE SEVERAL PAY ITEMS.

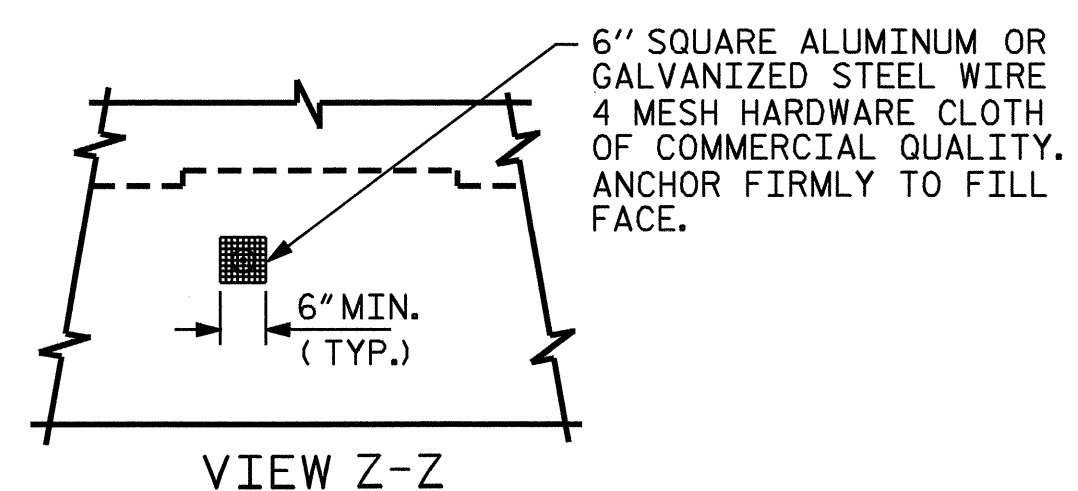
TEMPORARY DRAINAGE AT END BENT



* POSITION OF PILE DURING WELDING. **PILE SPLICE DETAILS**



SECTION THRU CAP



PIPE DRAIN DETAILS

NOTE: NO SEPARATE PAYMENT WILL BE MADE FOR FURNISHING AND INSTALLING THE PVC PLASTIC PIPE DRAINS, HARDWARE CLOTH AND FASTENERS. THE ENTIRE COST OF THIS WORK SHALL BE INCLUDED IN THE UNIT CONTRACT PRICE BID FOR THE SEVERAL PAY ITEMS.

PROJECT NO. B-3623
CABARRUS COUNTY
 STATION: 18+37.50-L-

SHEET 3 OF 3

STATE OF NORTH CAROLINA DEPARTMENT OF TRANSPORTATION RALEIGH					
SUBSTRUCTURE					
END BENT No. 1					
REVISIONS					
NO.	BY:	DATE:	NO.	BY:	DATE:
1			3		
2			4		

SHEET NO. S-24
 TOTAL SHEETS 34

Professional Engineer Seal
 NORTH CAROLINA PROFESSIONAL ENGINEER
 SEAL (0750)
 12/12/03