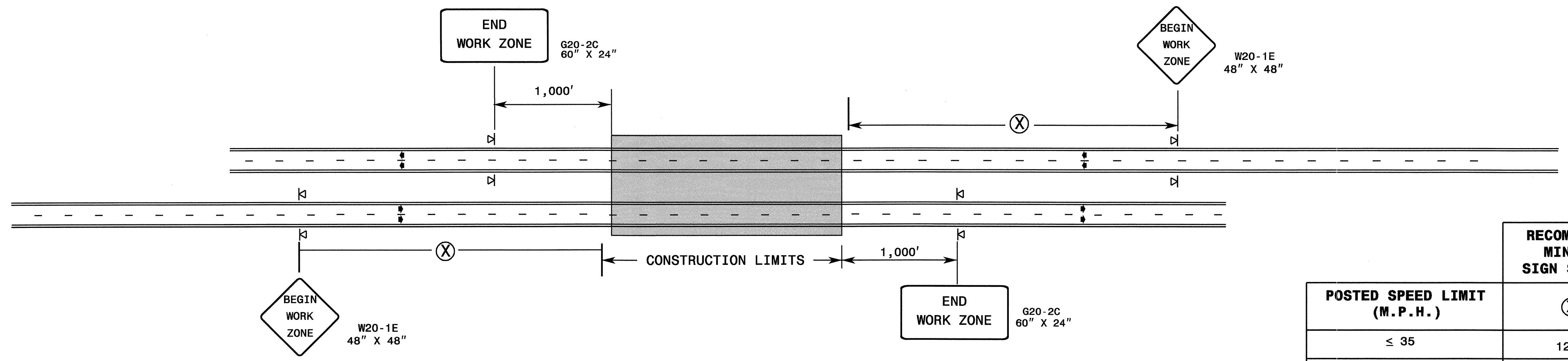


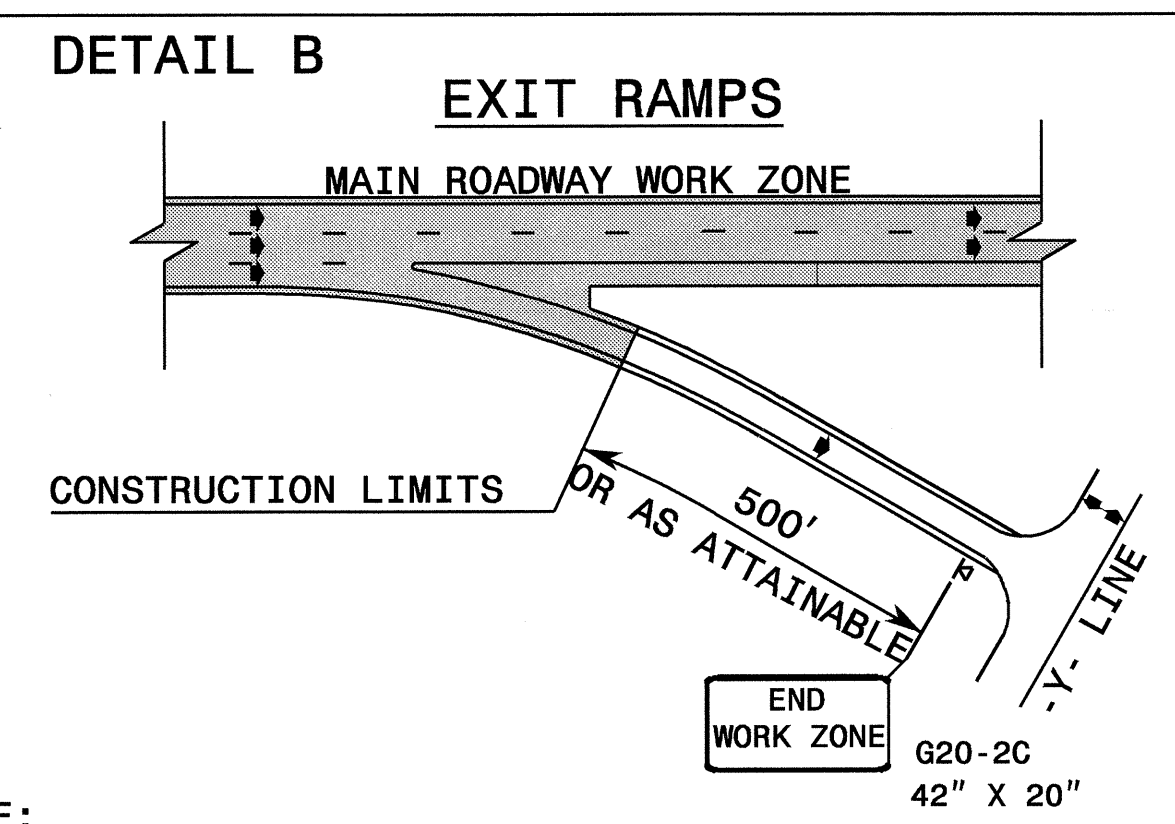
### DETAIL A



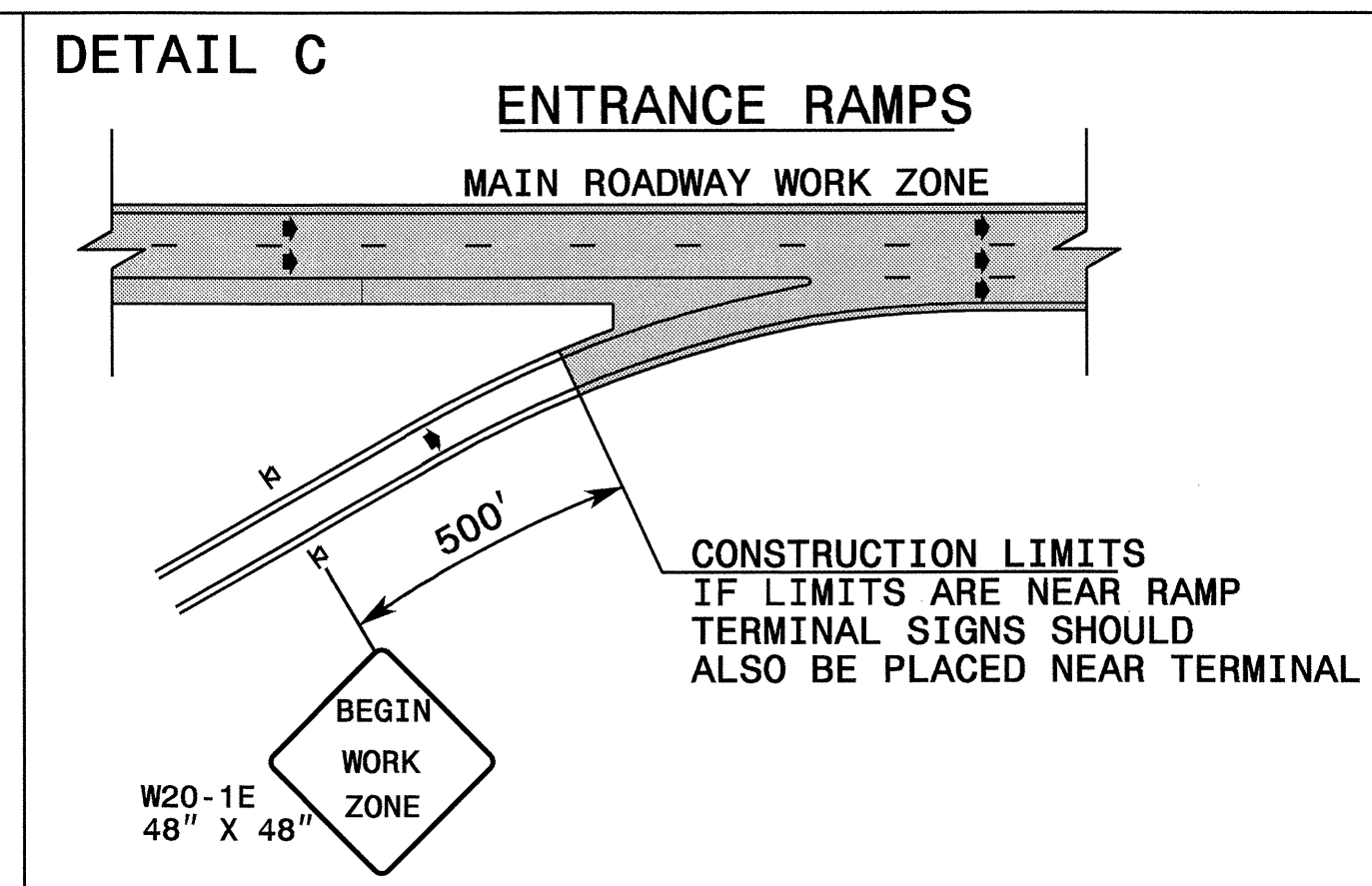
POSTED SPEED LIMIT (M.P.H.)	RECOMMENDED MINIMUM SIGN SPACING
≤ 35	⊗
40 - 50	1200'
55 - 65	2200'
	6800'

STATE OF NORTH CAROLINA  
 DEPT. OF TRANSPORTATION  
 DIVISION OF HIGHWAYS  
 RALEIGH, N.C.

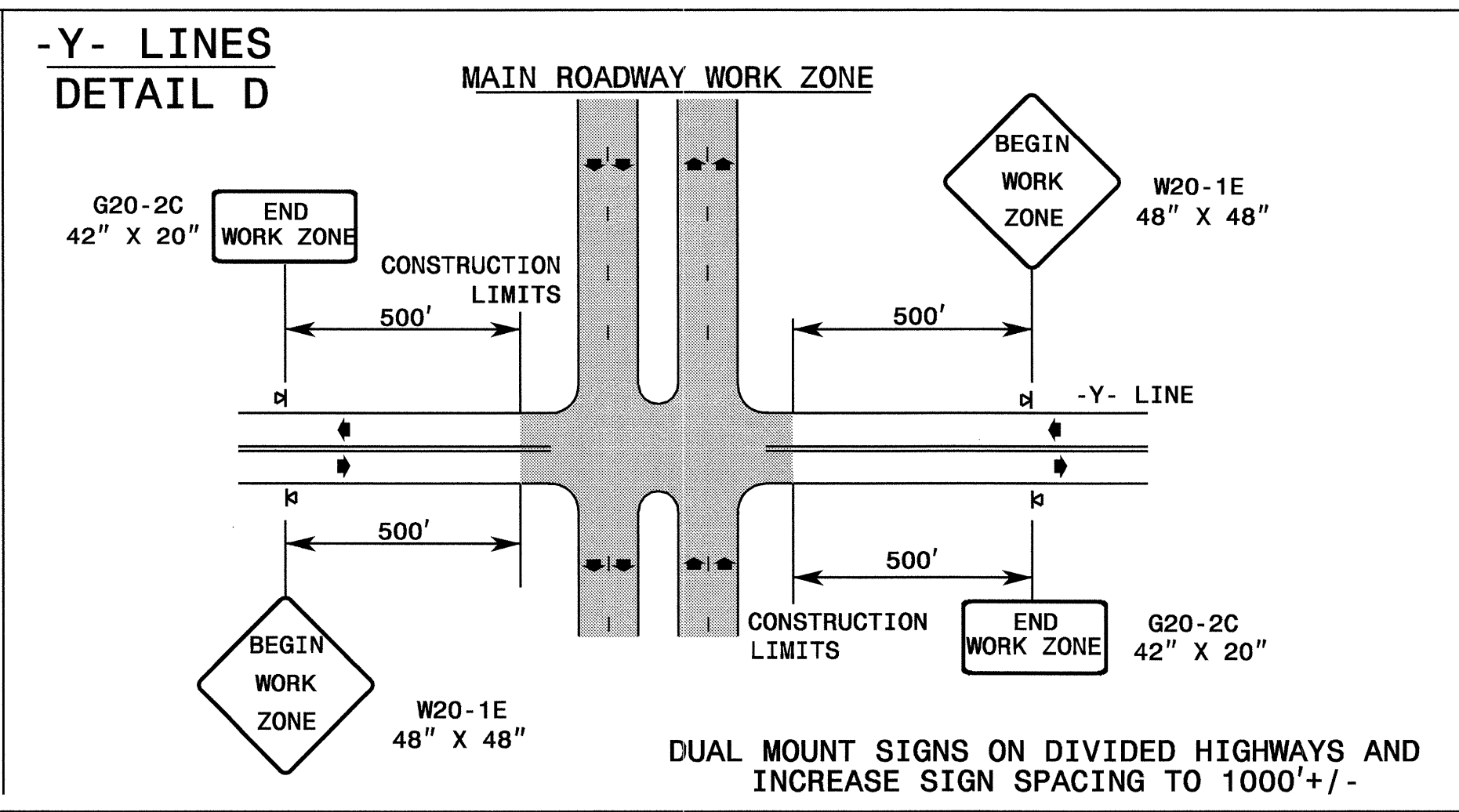
### ROADWAYS INTERSECTING ALONG HIGHWAY WORK ZONE



NOTE:  
SIGN NOT REQUIRED IF ADVANCE WARNING SIGNS HAVE BEEN PLACED ALONG -Y- LINE THAT RAMP INTERSECTS. IF CONSTRUCTION LIMITS ARE AT END OF RAMP, PLACE SIGN AT END OF RAMP.



CONSTRUCTION LIMITS IF LIMITS ARE NEAR RAMP TERMINAL SIGNS SHOULD ALSO BE PLACED NEAR TERMINAL



DUAL MOUNT SIGNS ON DIVIDED HIGHWAYS AND INCREASE SIGN SPACING TO 1000'+/-

**DETAIL DRAWING FOR INTERSTATE AND FREEWAY WORK ZONE SIGNS (SHORT-DURATION LANE CLOSURES)**

### GENERAL NOTES

- DO NOT INSTALL ADVANCE WARNING SIGNS MORE THAN 3 DAYS PRIOR TO BEGINNING OF WORK.
- ALL SIGN SPACING DIMENSIONS ARE APPROXIMATE, FIELD ADJUST AS NECESSARY OR AS DIRECTED.
- WHEN THERE ARE CONSTRUCTION LIMITS ON A DIVIDED -Y- LINE GREATER THAN 1 MILE IN LENGTH, USE THE SAME SIGNING AS FOR A MAIN ROADWAY WORK ZONE. (SEE DETAIL A)
- USE PORTABLE SIGNS.

**LEGEND**

- ⊗ PORTABLE SIGN
- ➔ DIRECTION OF TRAFFIC FLOW

APPROVED: *MMM* DATE: *4/2/04*

**DETAIL DRAWING FOR INTERSTATE AND FREEWAY WORK ZONE SIGNS**

SCALE: NONE		REVISIONS
DATE: MAR 04		
DWG. BY: MMM		
DESIGN BY: MMM		
REVIEWED BY: MMM		CADD FILE

31-MAR-2004 15:31  
 G:\TCP\I-4417.dgn  
 htschnelder AT TETC095374