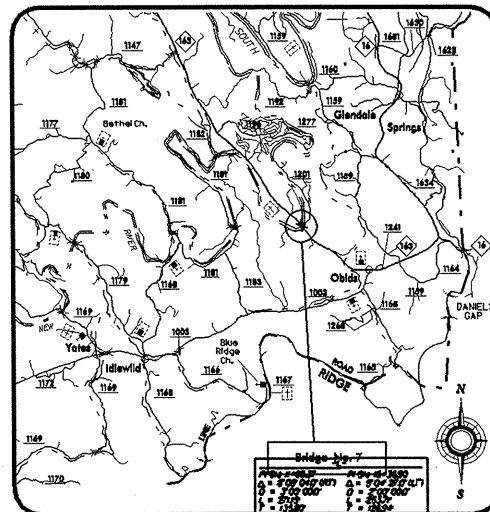


PROJECT: 8.1711401 B-4010

See Sheet 1-A For Index of Sheets  
See Sheet 1-B For Conventional Symbols



VICINITY MAP

PRE-CFI SUBMITTAL

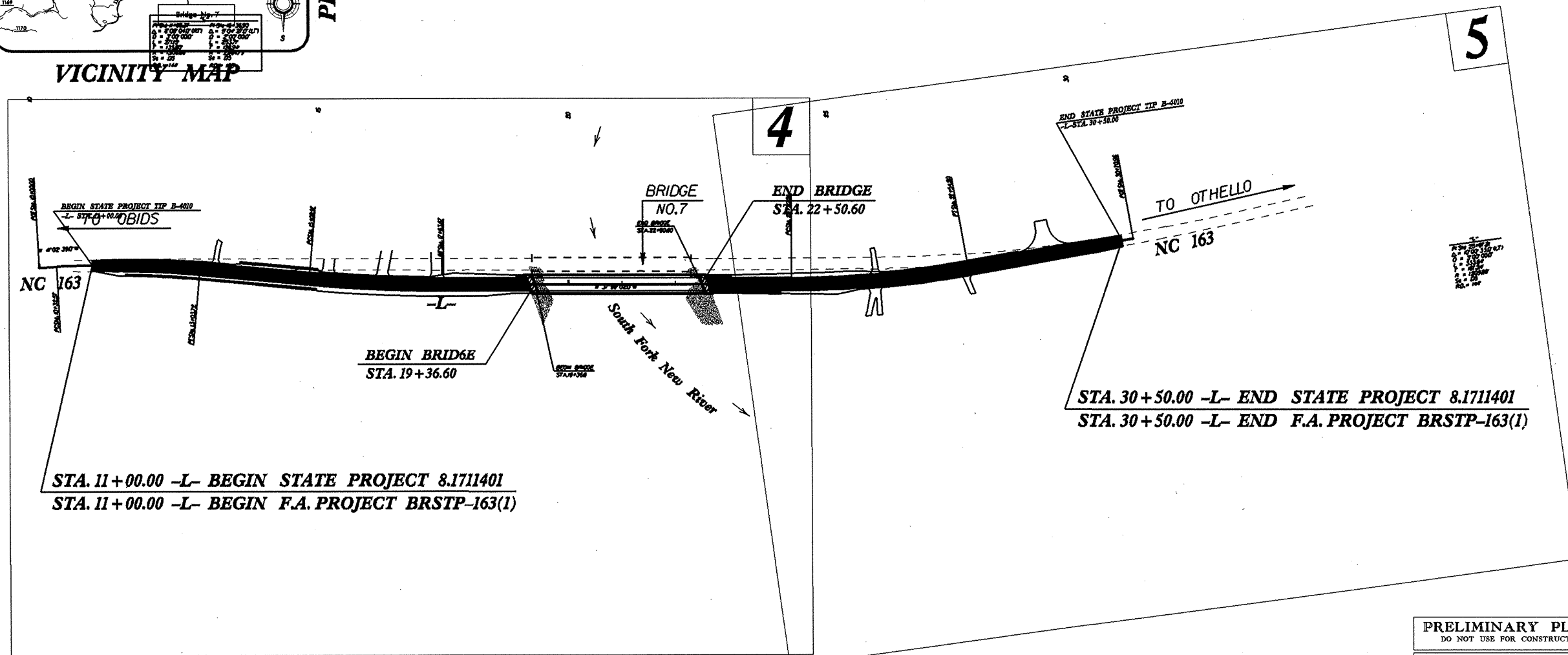
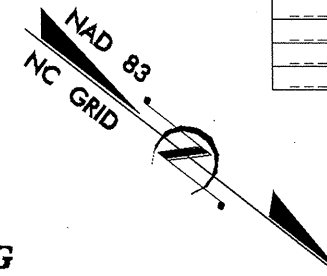
STATE OF NORTH CAROLINA  
DIVISION OF HIGHWAYS

**ASHE COUNTY**

LOCATION: Replace Bridge No. 7 & approaches on  
NC 163, over South Fork New River.

TYPE OF WORK: GRADING, DRAINAGE, STRUCTURES & PAVING

STATE	STATE PROJECT REFERENCE NO.	SHEET NO.	TOTAL SHEETS
N.C.	B-4010	2A	26
STATE PROJ. NO.	F.A. PROJ. NO.	DESCRIPTION	
8.1711401	BRSTP-163(1)	PE	



STA. 11+00.00 -L- BEGIN STATE PROJECT 8.1711401  
STA. 11+00.00 -L- BEGIN F.A. PROJECT BRSTP-163(1)

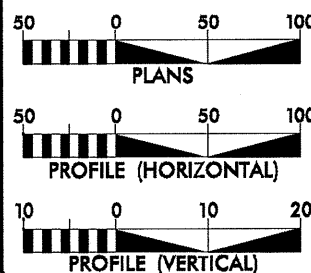
STA. 30+50.00 -L- END STATE PROJECT 8.1711401  
STA. 30+50.00 -L- END F.A. PROJECT BRSTP-163(1)

Clearing on this project shall be performed to the limits established by method III

PRELIMINARY PLANS  
DO NOT USE FOR CONSTRUCTION

INCOMPLETE PLANS  
DO NOT USE FOR R/W ACQUISITION

GRAPHIC SCALES



DESIGN DATA

ADT 2004 = 2880  
ADT 2025 = 4800  
DHV = 13 %  
D = 60 %  
\* T = 6 %  
V = 60 MPH  
\* (2% TTST & 4% DUAL)

PROJECT LENGTH

Length Roadway F.A. Project BRSTP-163(1) ..... 0.369 mi.  
Length Structure F.A. Project BRSTP-163(1) ..... 0.059 mi.  
TOTAL LENGTH State Project 8.1711401 ..... 0.310 mi.



PLANS PREPARED BY :  
RUMMEL, KLEPPER & KAHL LLP  
consulting engineers  
5800 FARRINGTON PLACE, SUITE 105  
RALEIGH, NORTH CAROLINA 27609  
FOR

DIVISION OF HIGHWAYS

2002 STANDARD SPECIFICATIONS  
RIGHT OF WAY DATE:  
July 18, 2003  
LETTING DATE:  
July 20, 2004

Michael T. Merritt, P.E.  
PROJECT ENGINEER  
Stephen E. Roberts, P.E.  
PROJECT DESIGN ENGINEER

NC DOT CONTACT: Teresa M. Bruton, P.E.  
Project Engineer-Design Services

HYDRAULICS ENGINEER

SIGNATURE: \_\_\_\_\_ P.E.  
ROADWAY DESIGN  
ENGINEER

SIGNATURE: \_\_\_\_\_ P.E.

DIVISION OF HIGHWAYS  
STATE OF NORTH CAROLINA

STATE DESIGN ENGINEER  
DEPARTMENT OF TRANSPORTATION  
FEDERAL HIGHWAY ADMINISTRATION

APPROVED  
DIVISION ADMINISTRATOR  
DATE

J:\COMINGS\_302157.DWG/BRSTP163 SH 11/06/02