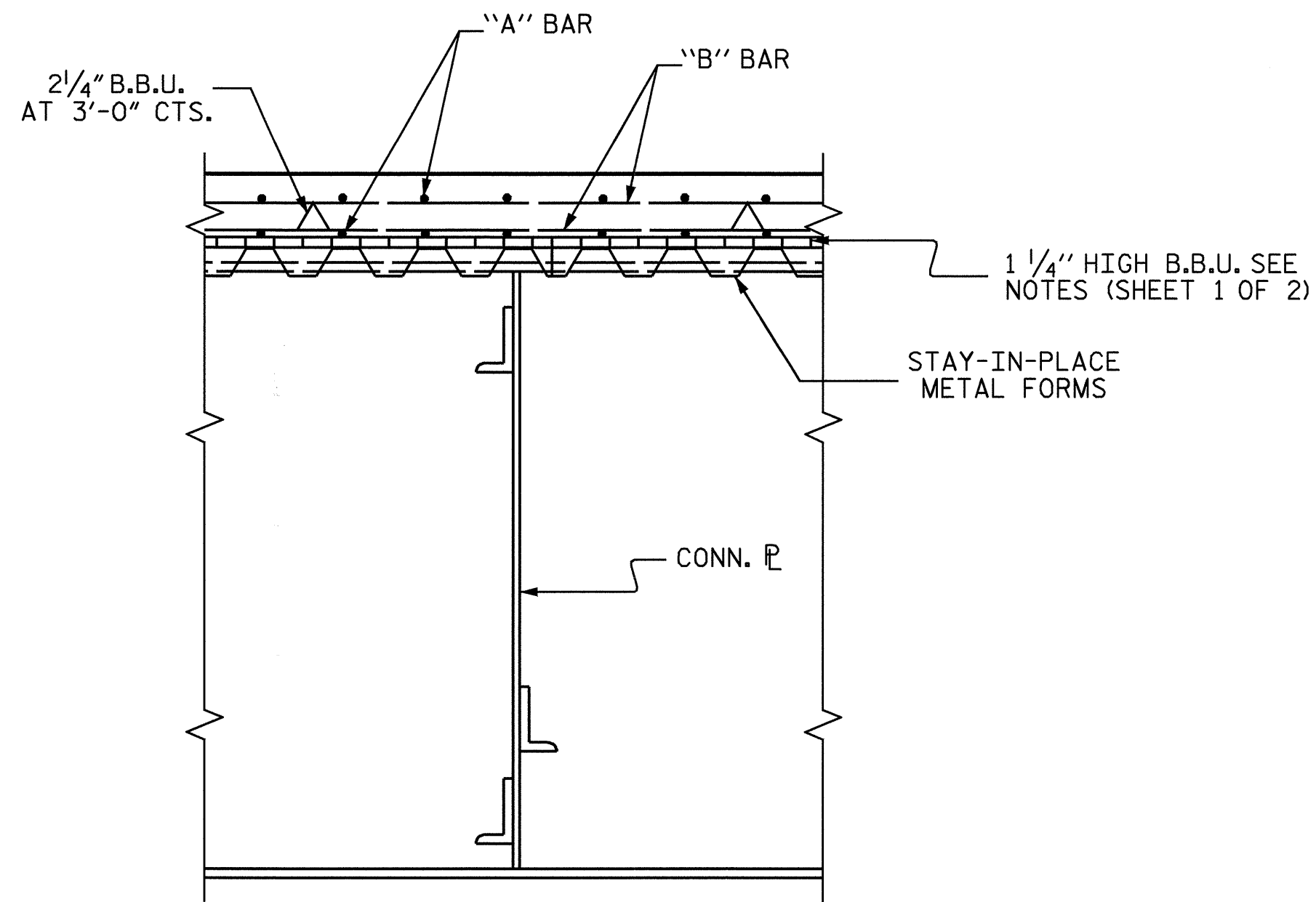
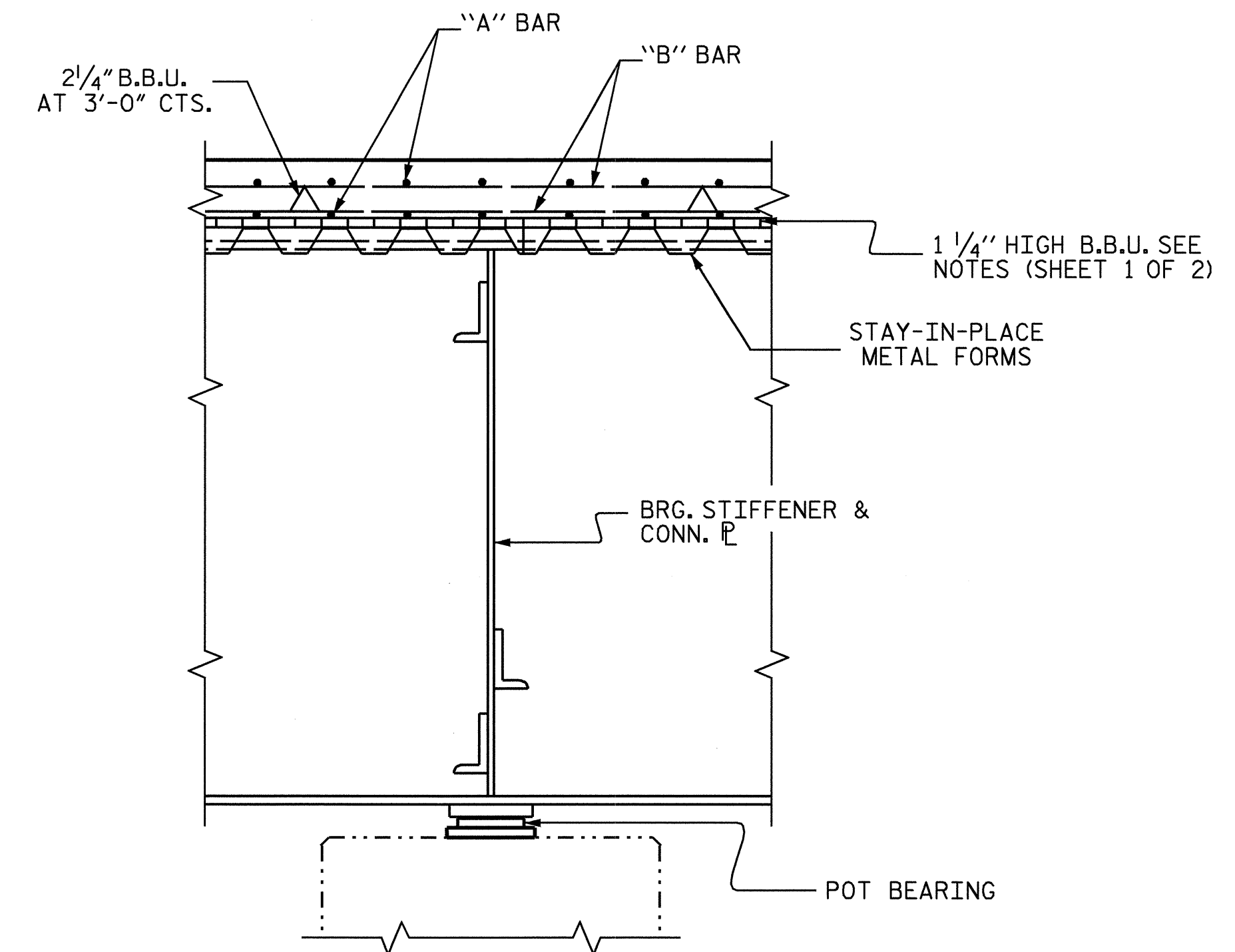


SECTION THRU END BENT #1 DIAPHRAGM

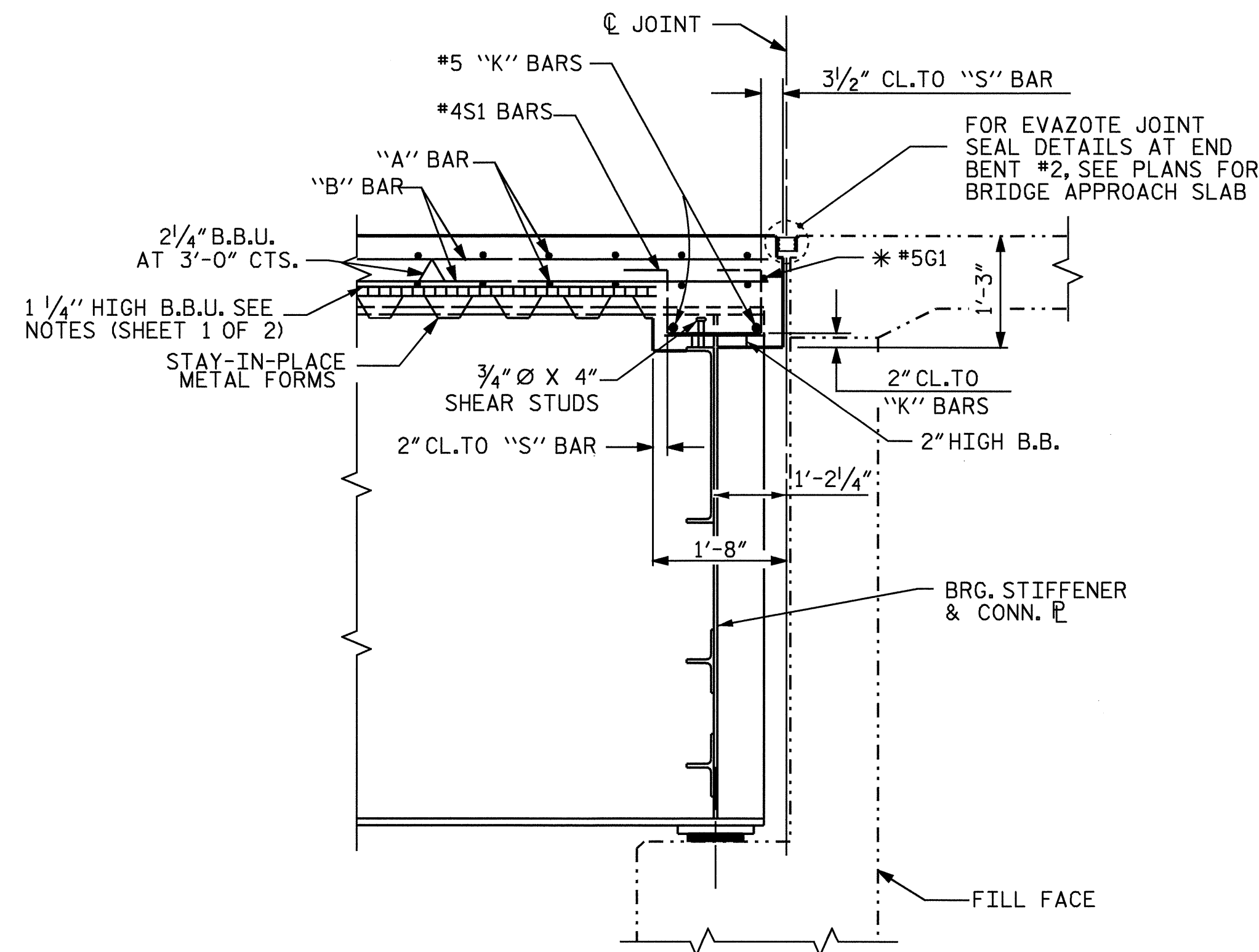
*5G1 BAR MAY BE SHIFTED SLIGHTLY, AS NECESSARY, TO CLEAR DIAPHRAGM AND REINFORCING STEEL.



SECTION THRU INTERMEDIATE DIAPHRAGM

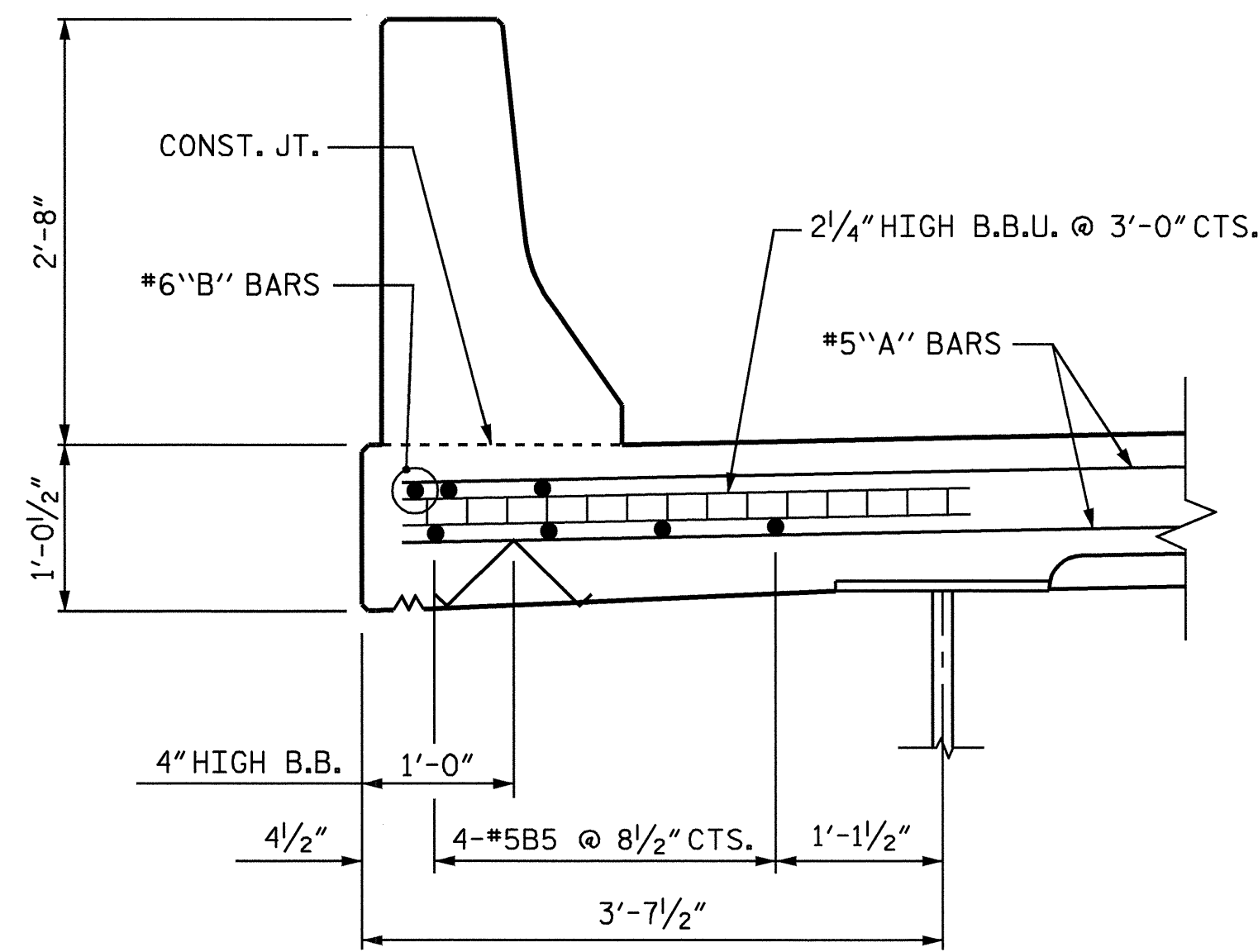


SECTION THRU BENT DIAPHRAGM

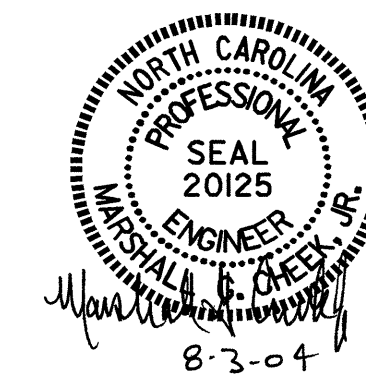


SECTION THRU END BENT #2 DIAPHRAGM

*5G1 BAR MAY BE SHIFTED SLIGHTLY, AS NECESSARY, TO CLEAR DIAPHRAGM AND REINFORCING STEEL.



SECTION THRU OVERHANG



PROJECT NO. B-4010
 ASHE COUNTY
 STATION: 20+93.60-L-
 SHEET 2 OF 2

STATE OF NORTH CAROLINA DEPARTMENT OF TRANSPORTATION RALEIGH						SHEET NO. S-8
SUPERSTRUCTURE TYPICAL SECTION						TOTAL SHEETS 37
REVISIONS						
NO.	BY:	DATE:	NO.	BY:	DATE:	
1			3			
2			4			

DRAWN BY : L.L. MURPHY DATE : 12-03
 CHECKED BY : D. HODGE DATE : 05-04

03-AUG-2004 09:59
 W:\sdquady\B4010\lmurphy\Microstation\B4010.sd.TS.01.dgn
 clewis

NCBDS