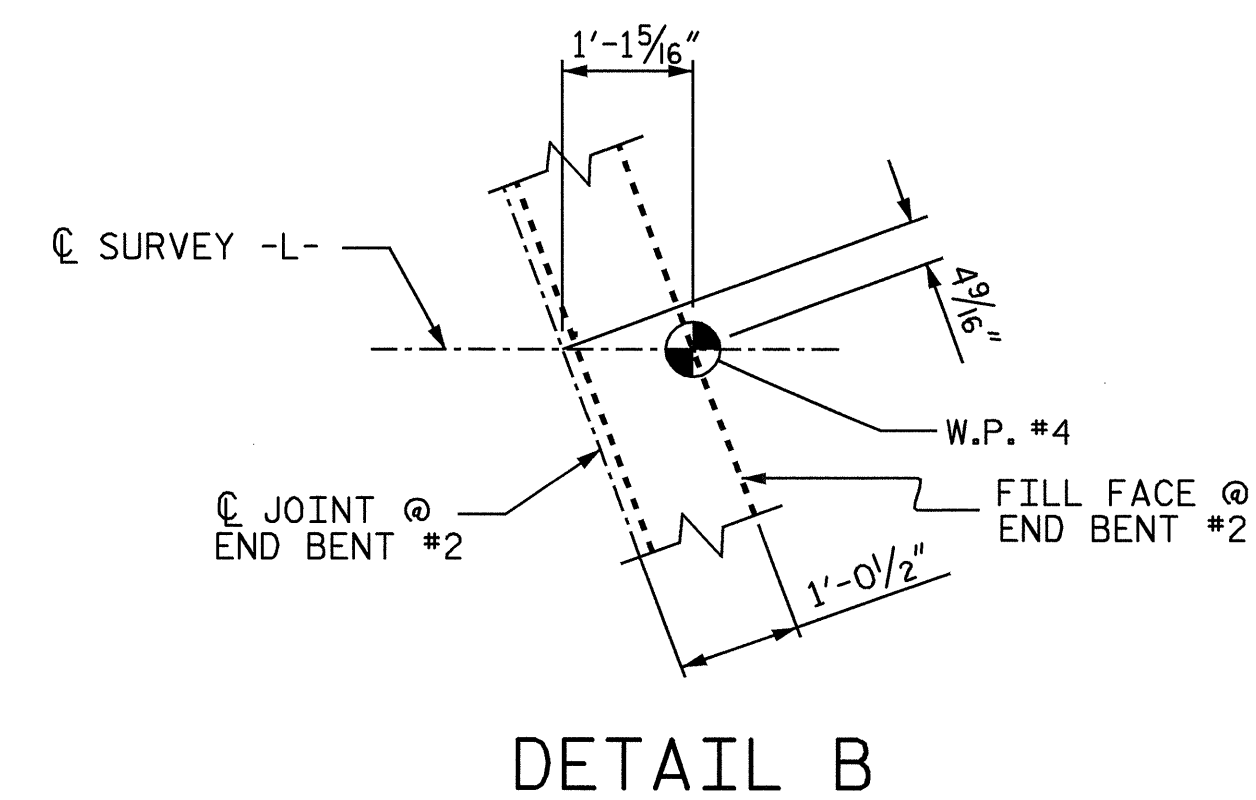


PLAN OF SPAN C

FOR REINFORCING STEEL IN BARRIER RAIL, SEE "CONCRETE BARRIER RAIL" SHEET.



PROJECT NO. B-4010
ASHE COUNTY
 STATION: 20+93.60-L-

SHEET 3 OF 3

STATE OF NORTH CAROLINA
 DEPARTMENT OF TRANSPORTATION
 RALEIGH

SUPERSTRUCTURE
 PLAN OF SPAN C



DRAWN BY : L.L. MURPHY DATE : 12/03
 CHECKED BY : D. HODGE DATE : 05-04

REVISIONS						SHEET NO.	
NO.	BY:	DATE:	NO.	BY:	DATE:	S-11	
1			3			TOTAL SHEETS	
2			4			37	