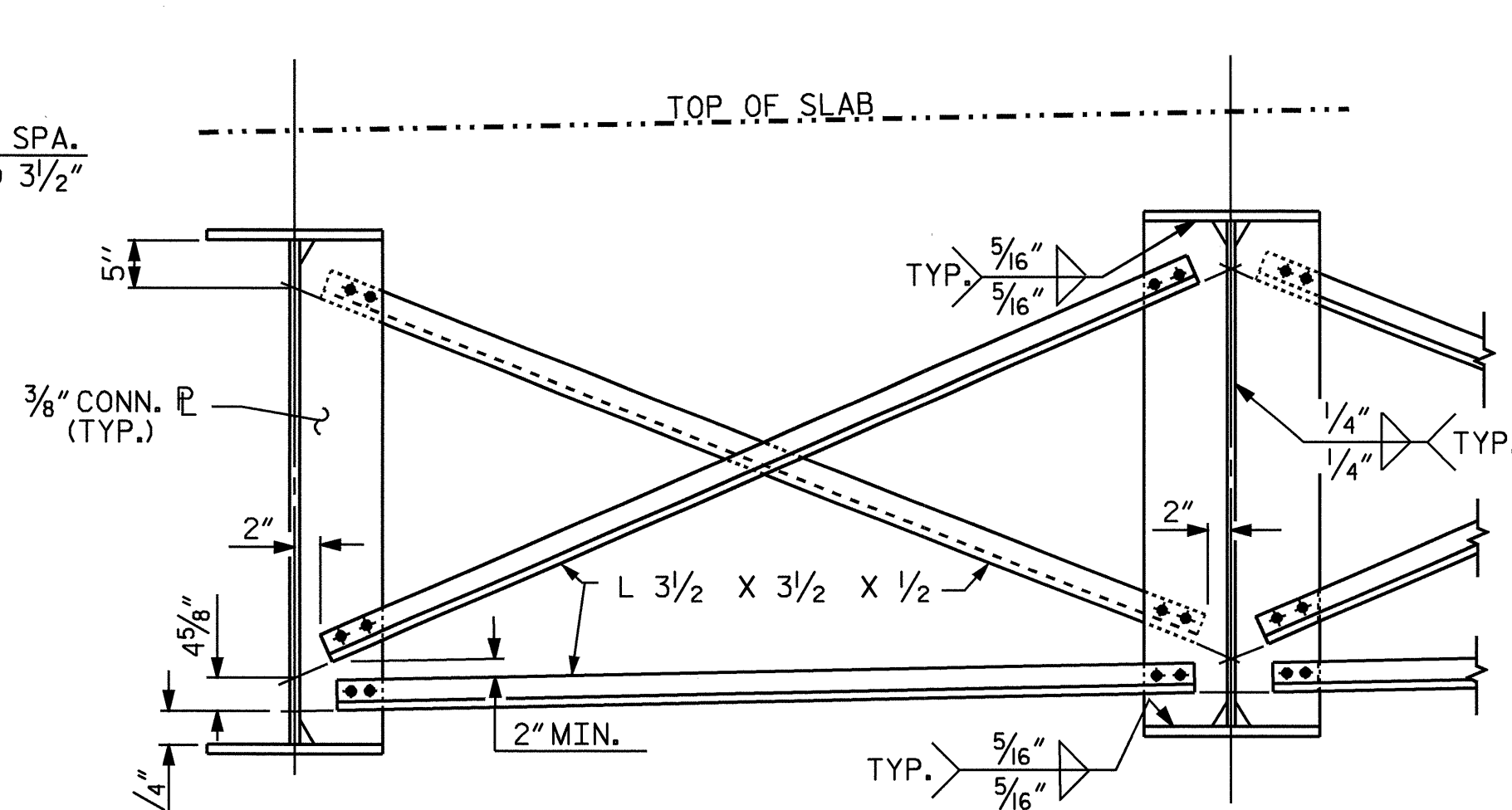
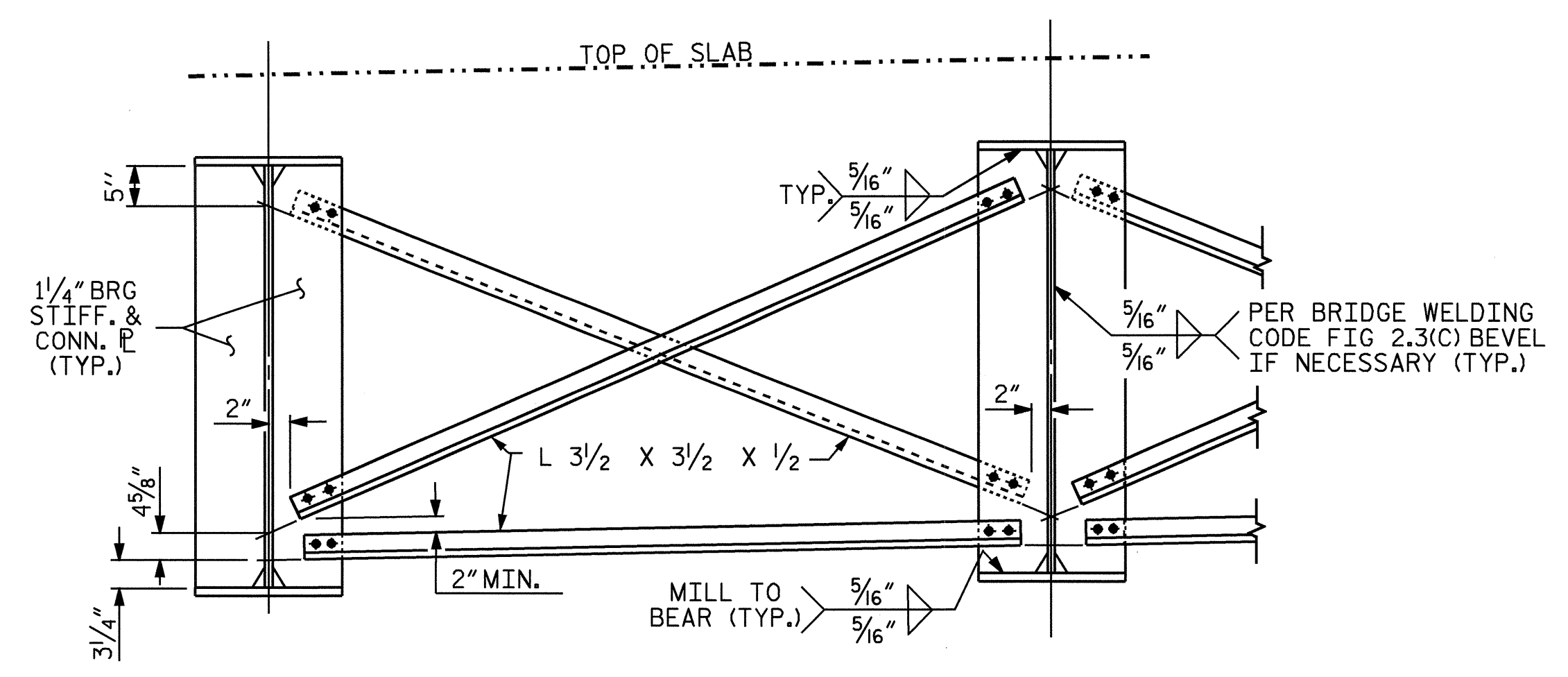


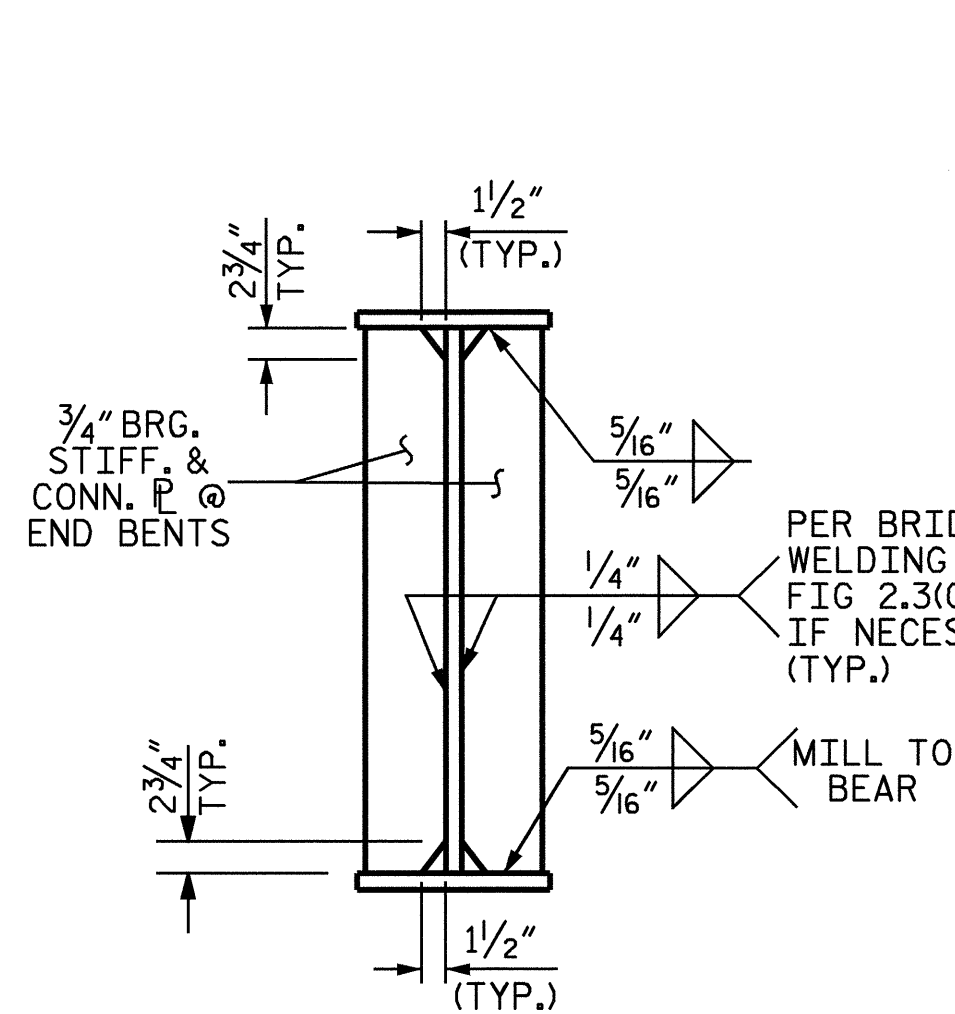
TYPICAL END BENT DIAPHRAGM (D1)



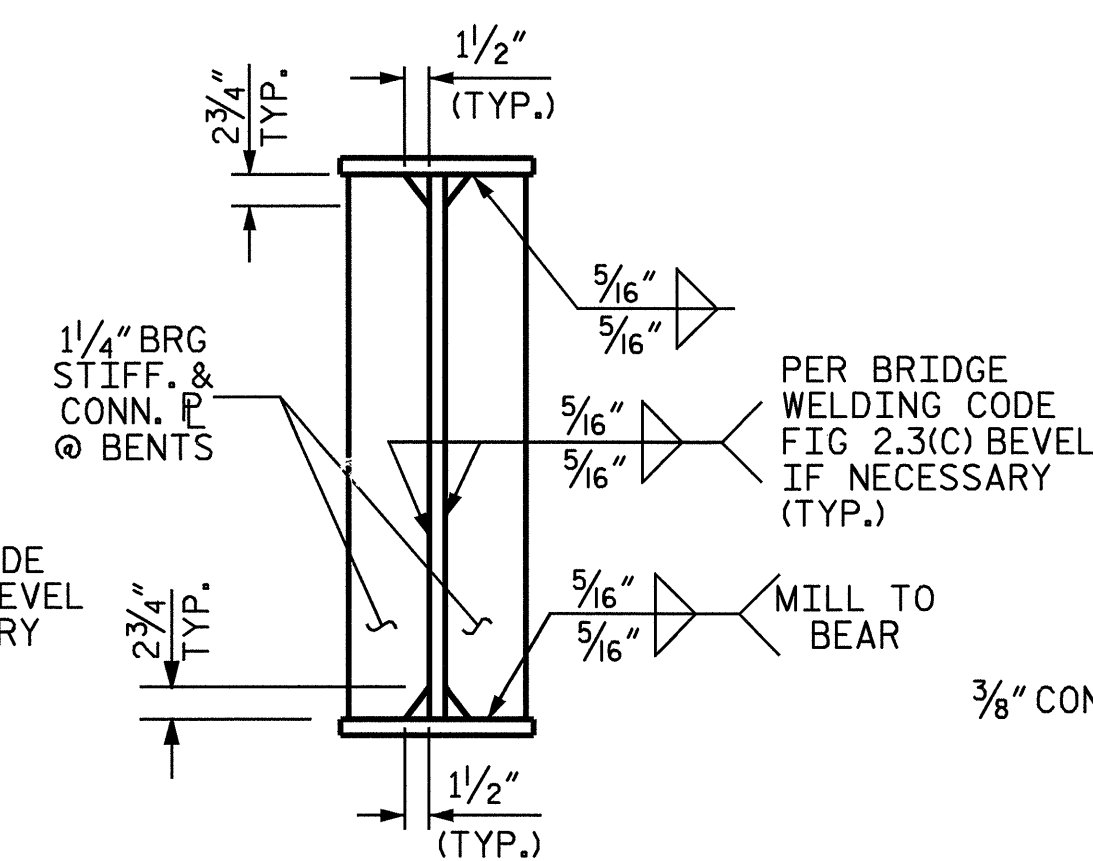
TYPICAL INTERMEDIATE DIAPHRAGM (D3)



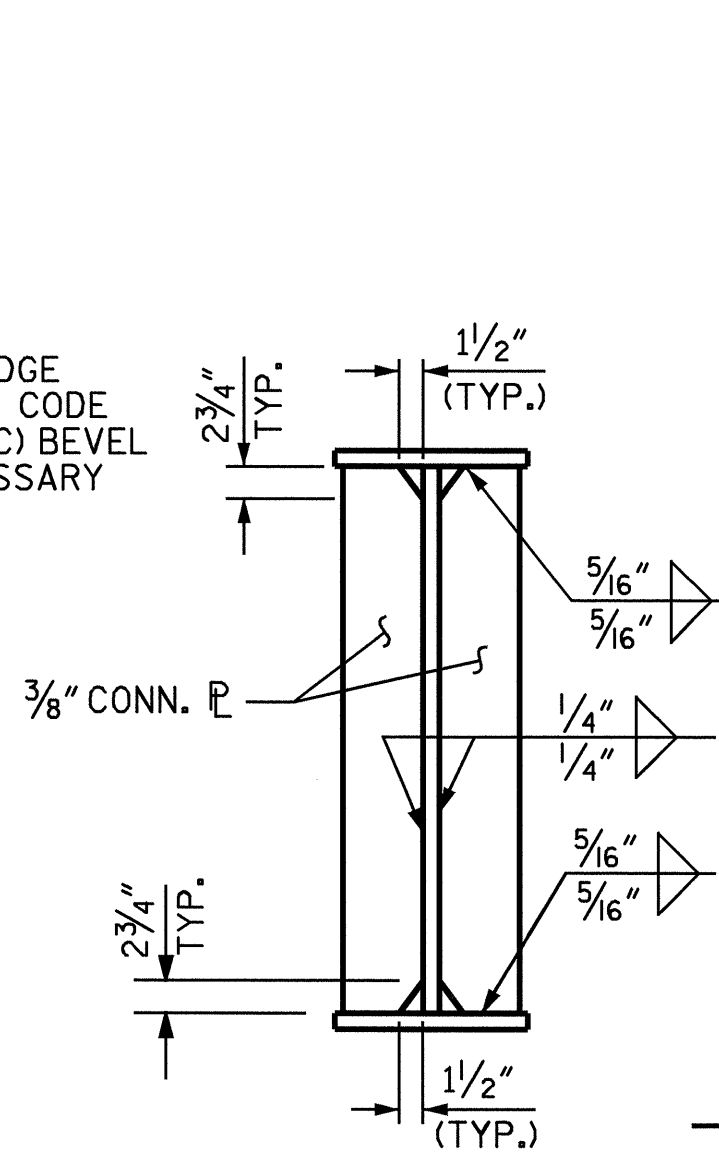
TYPICAL BENT DIAPHRAGM (D2)



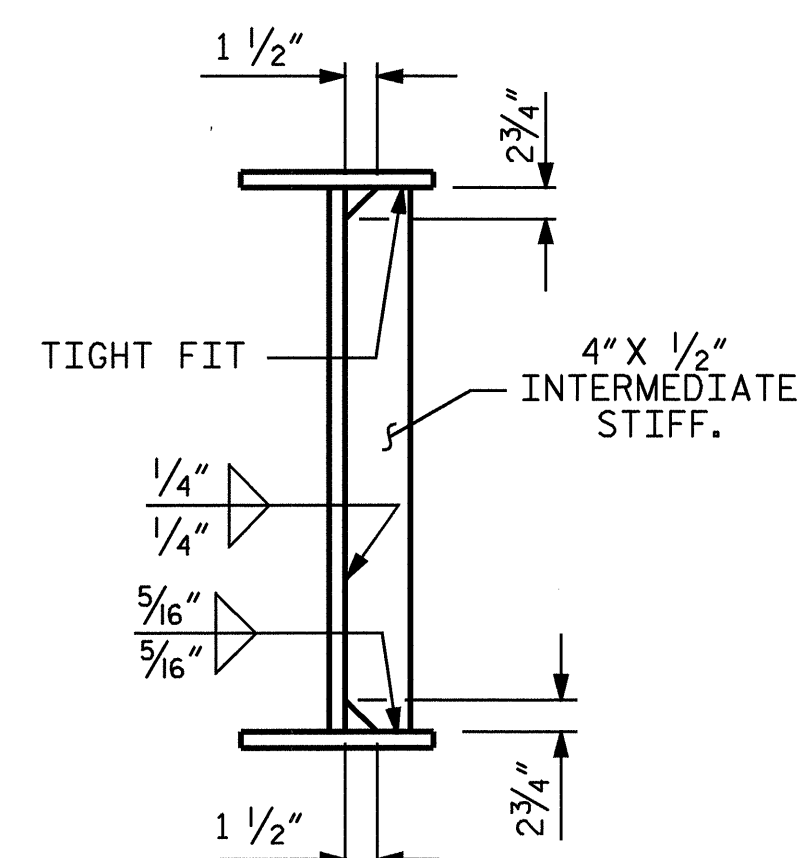
BEARING STIFFENER & CONNECTOR P @ END BENTS



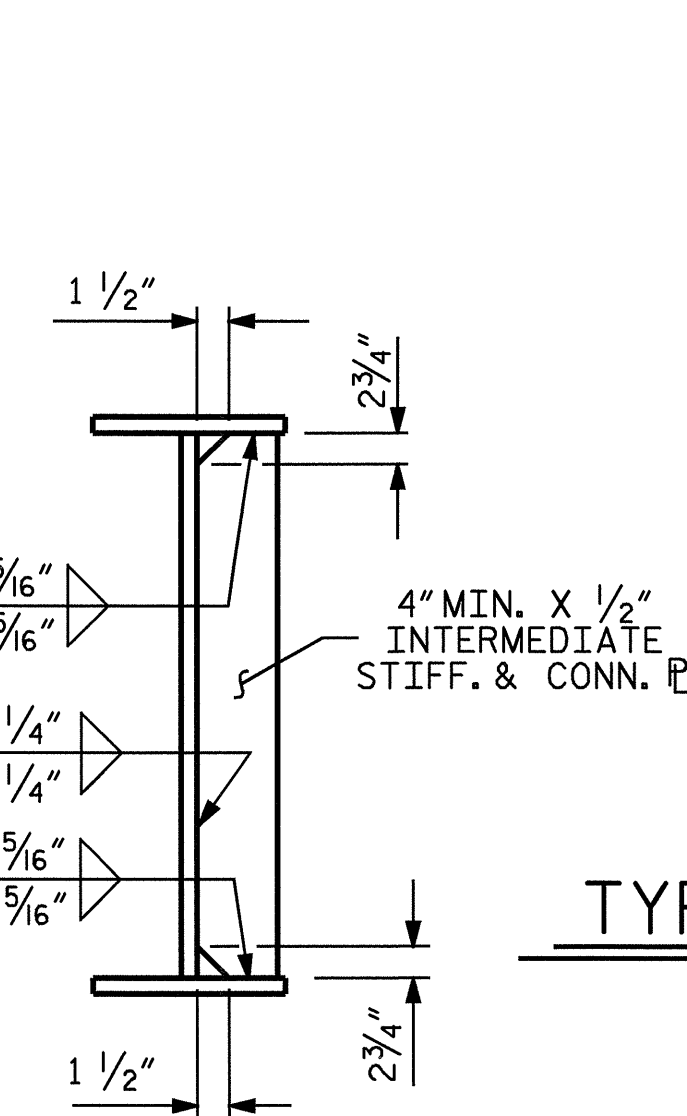
BEARING STIFFENER & CONNECTOR P @ BENTS



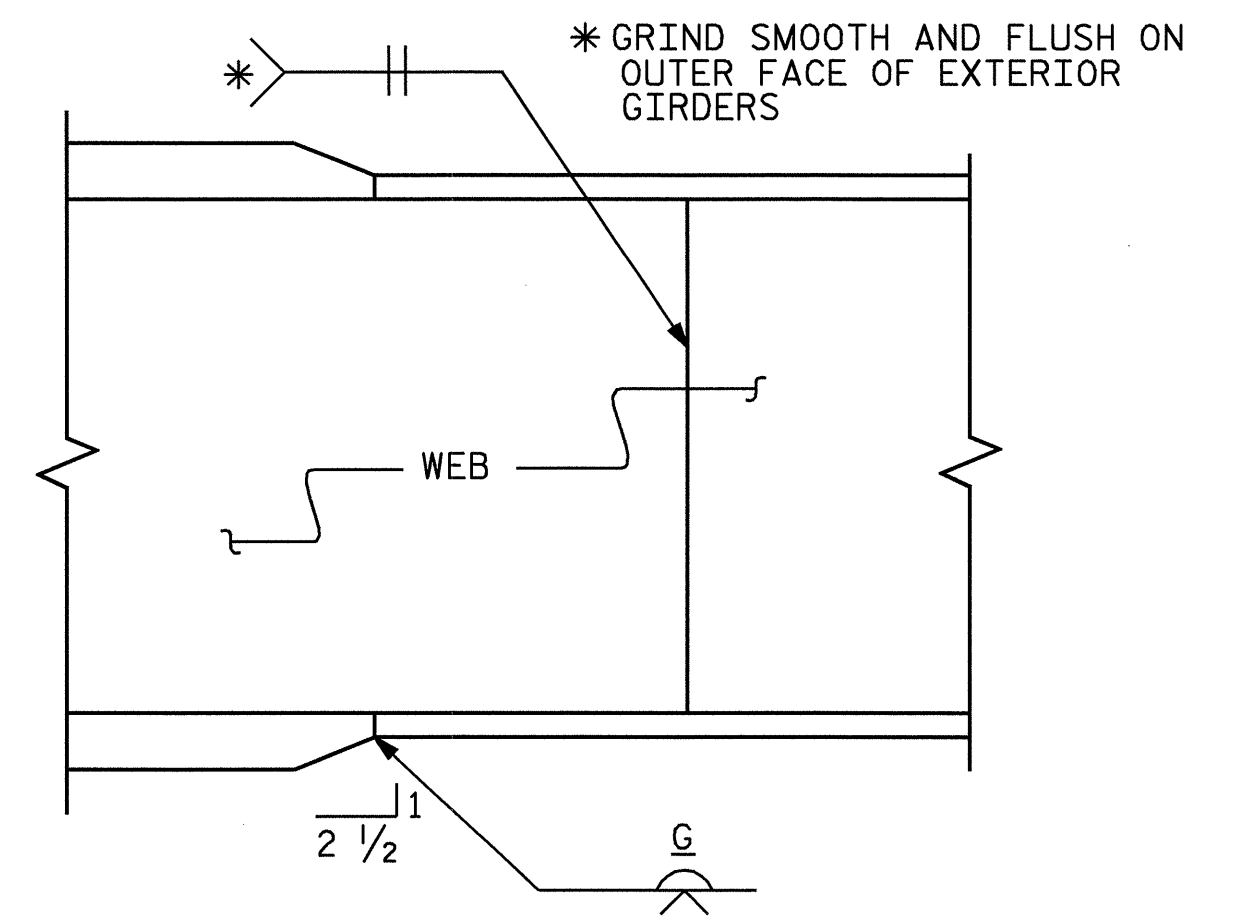
CONNECTOR PLATE @ INTERMEDIATE DIAPHRAGM



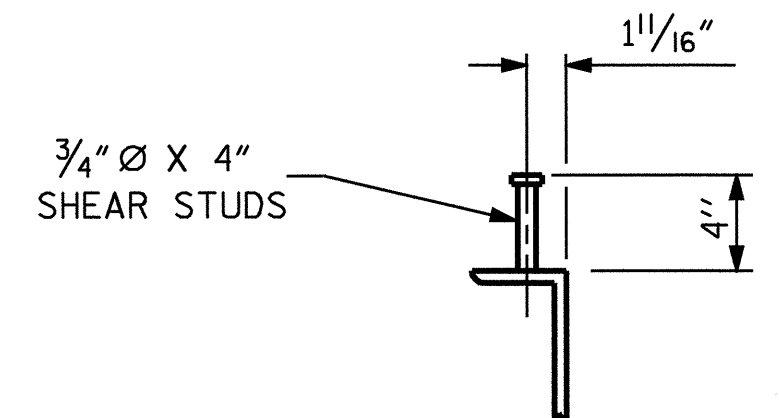
INTERMEDIATE STIFFENER



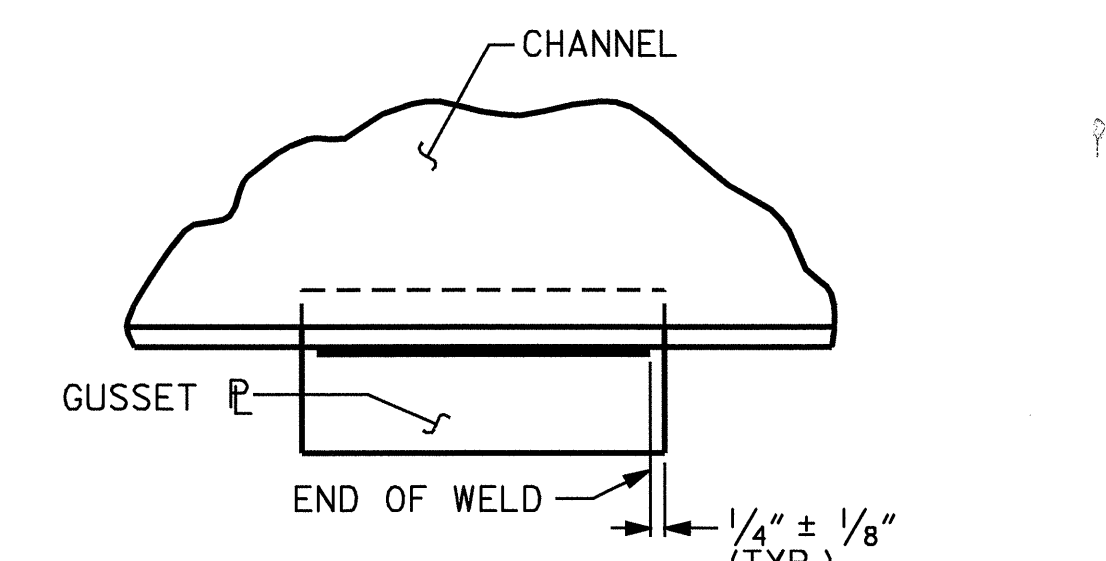
INTERMEDIATE STIFFENER WHEN USED AS CONNECTOR PLATE FOR INTERMEDIATE DIAPHRAGM



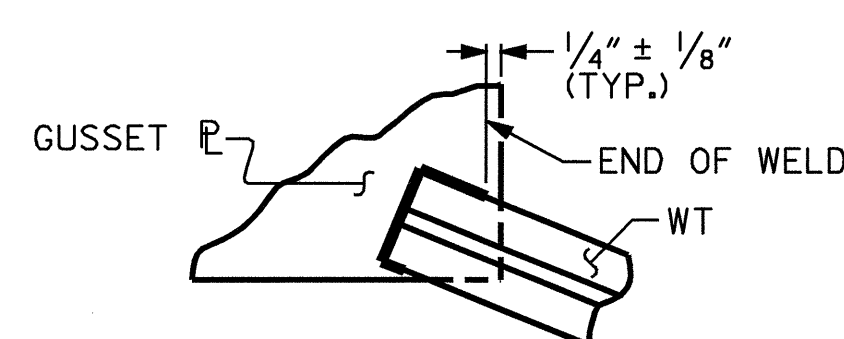
TYPICAL FLANGE AND WEB BUTT JOINT



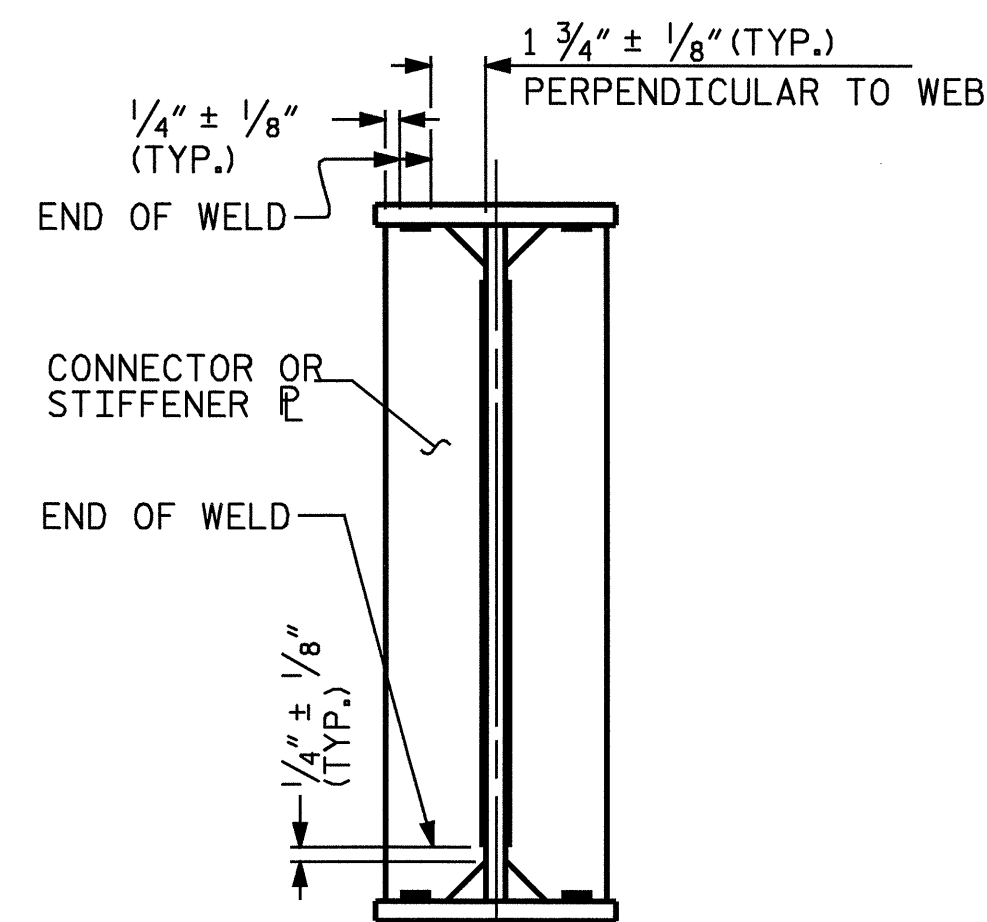
SHEAR STUD DETAILS



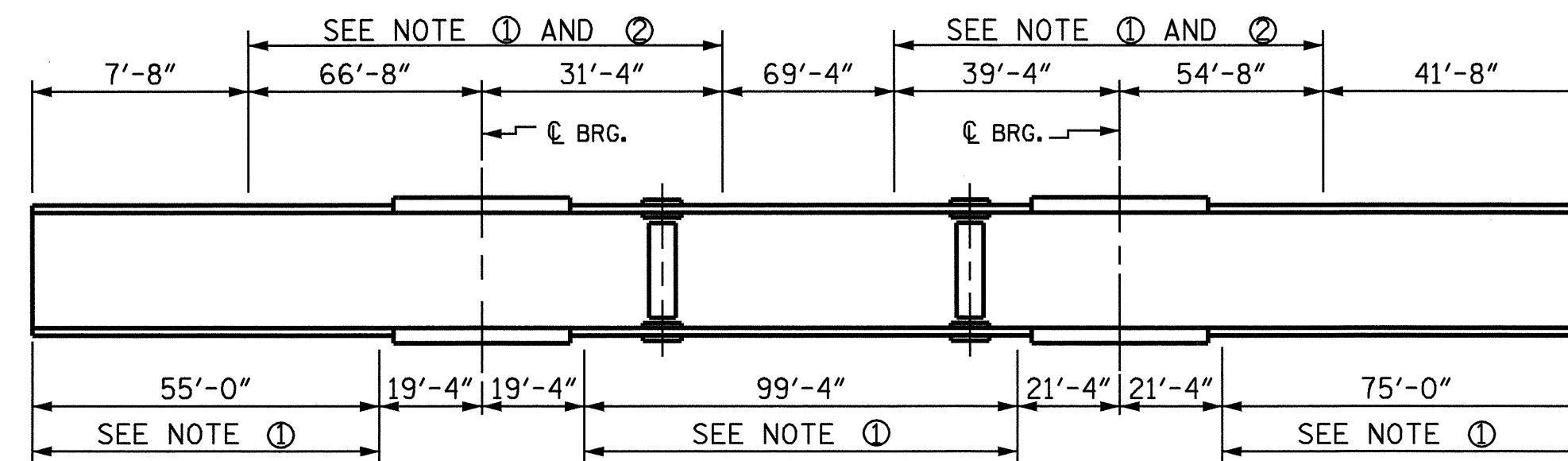
TYPICAL GUSSET PLATE CONNECTION



TYPICAL "TEE" TO GUSSET PLATE CONNECTION



TYPICAL STIFFENER OR CONNECTOR PLATE CONNECTIONS



GIRDER MAKE UP

NOTE ① : CHARPY V-NOTCH TESTS ARE REQUIRED FOR ALL TOP OR BOTTOM FLANGE PLATES WHICH FALL WITHIN THESE LIMITS, ALL WEB PLATES, AND ALL SPLICE PLATES. IF A PERMITTED SHOP FLANGE SPLICE IS NOT USED, CHARPY V-NOTCH TESTS WILL BE REQUIRED FOR THE ENTIRE FLANGE PLATE. FOR CHARPY V-NOTCH TESTS, SEE ARTICLE 1072-9 OF THE STANDARD SPECIFICATIONS.

NOTE ② : NO WELDING OF FORMS OR FALSEWORK TO THE TOP FLANGE WILL BE PERMITTED IN THIS REGION

CHARPY V-NOTCH TESTS FOR CONTINUOUS PLATE GIRDERS

PROJECT NO. B-4010
 ASHE COUNTY
 STATION: 20+93.60-L-

SHEET 2 OF 3



STATE OF NORTH CAROLINA
 DEPARTMENT OF TRANSPORTATION
 RALEIGH

SUPERSTRUCTURE
 STRUCTURAL STEEL
 DETAILS

DRAWN BY : L.L. MURPHY DATE : 04-04
 CHECKED BY : D. HODGE DATE : 05-04

27-JUL-2004 15:12
 W:\squadry\B4010\lmmurphy\Misc\station\B4010_sd_ss_01.dgn
 lmmurphy

REVISIONS					SHEET NO.
NO.	BY:	DATE:	NO.	BY:	DATE:
1			3		
2			4		

TOTAL SHEETS 37

NC006