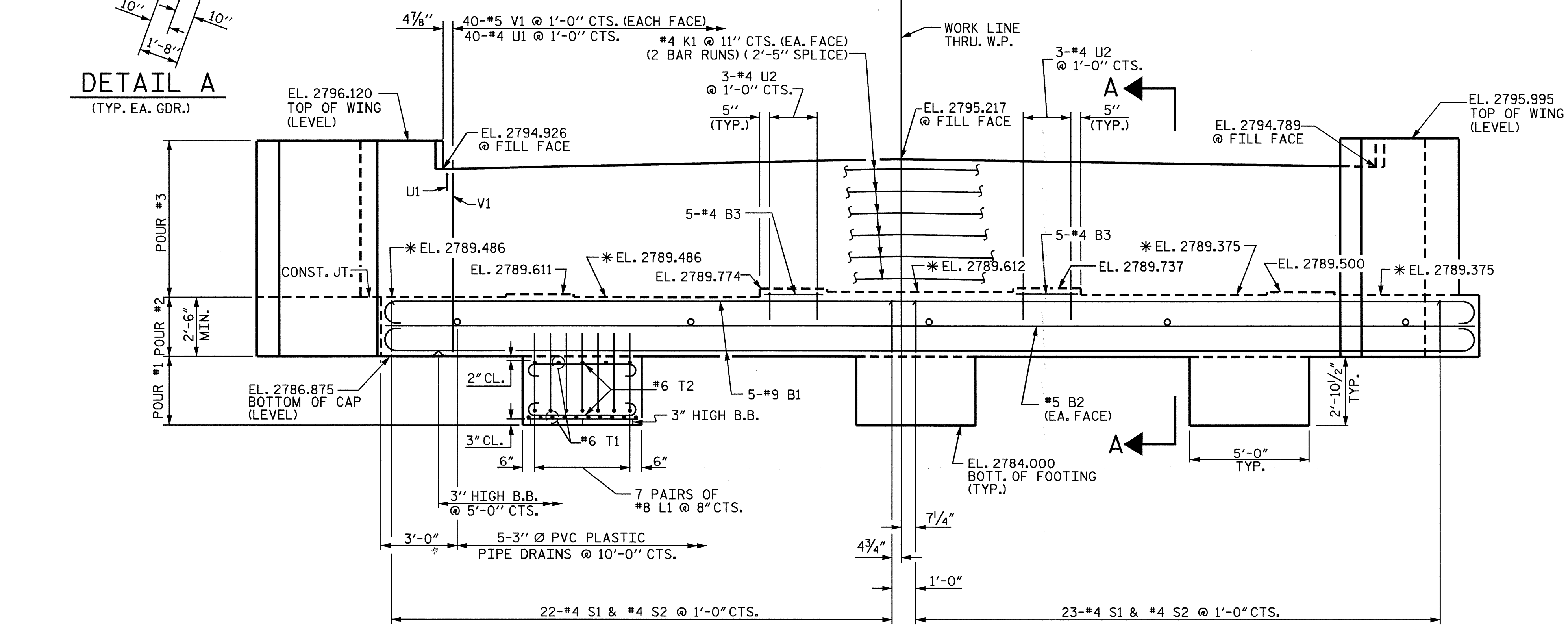
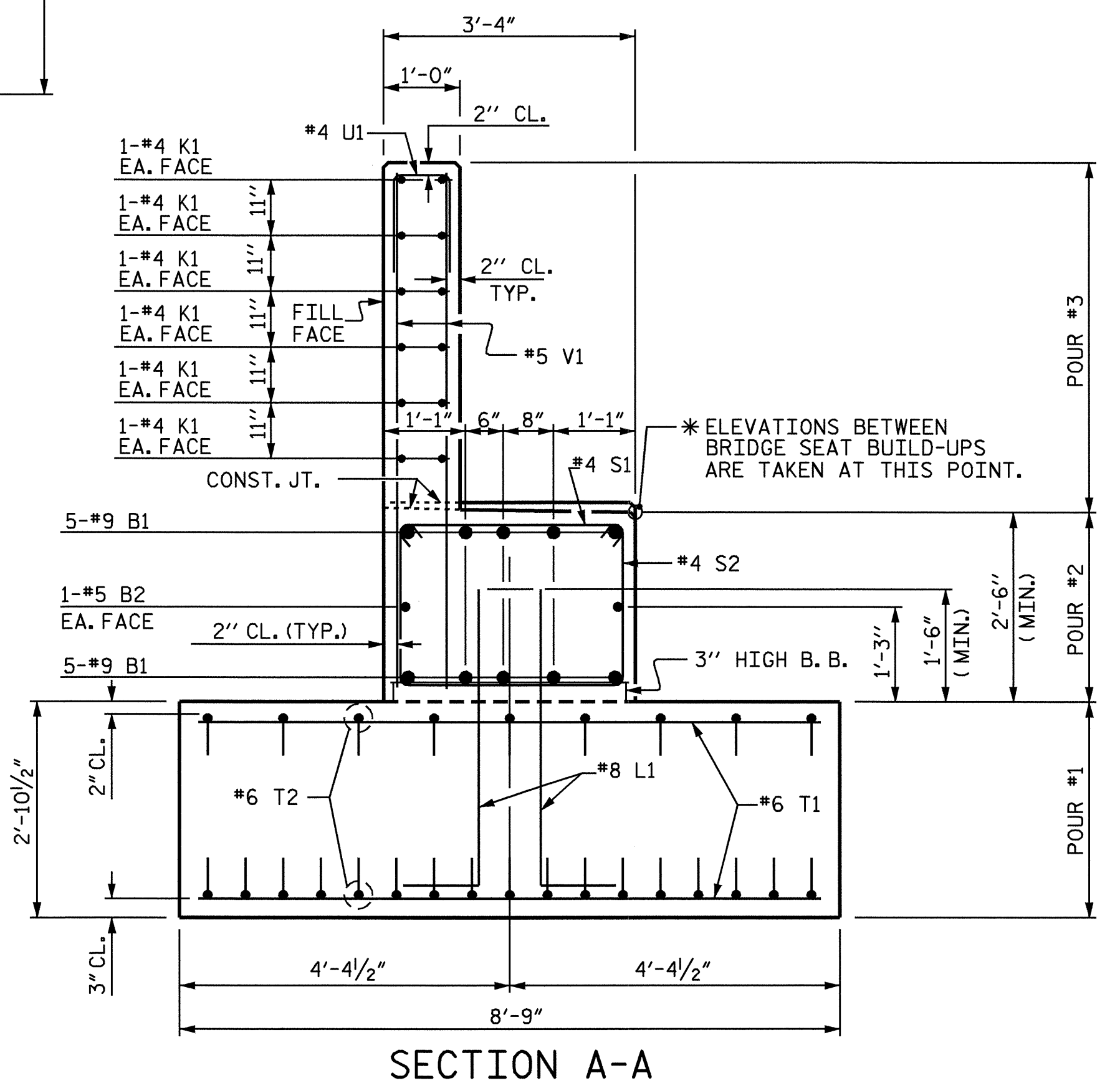


**DETAIL A**  
(TYP. EA. GDR.)

**PLAN**



**ELEVATION**



**SECTION A-A**

**NOTES:**  
 STIRRUPS IN CAP MAY BE SHIFTED AS NECESSARY TO CLEAR ANCHOR BOLTS.  
 FOR EPOXY PROTECTIVE COATING, SEE SPECIAL PROVISIONS.  
 PIPE DRAINS MAY BE SHIFTED SLIGHTLY AS NECESSARY TO CLEAR REINFORCING STEEL AND ANCHOR BOLTS.  
 FOR PIPE DRAIN DETAILS, SEE SHEET 3 OF 3.  
 BACKWALL SHALL BE PLACED BEFORE APPLYING THE EPOXY PROTECTIVE COATING.  
 THE TOP SURFACE AREAS OF THE END BENT CAPS SHALL BE CURED IN ACCORDANCE WITH THE STANDARD SPECIFICATIONS EXCEPT THAT THE MEMBRANE CURING COMPOUND METHOD SHALL NOT BE USED.  
 THE TOP SURFACE OF THE END BENT CAP EXCEPT THE BRIDGE SEAT BUILDUPS SHALL BE SLOPED TRANSVERSELY FROM THE FILL FACE TO THE BACK FACE AT THE RATE OF 1/4\"/>

PROJECT NO. B-4010  
 ASHE COUNTY  
 STATION: 20+93.60 -L-  
 SHEET 1 OF 3

STATE OF NORTH CAROLINA DEPARTMENT OF TRANSPORTATION RALEIGH				SHEET NO.
SUBSTRUCTURE END BENT #1				S-23
REVISIONS				TOTAL SHEETS
NO.	BY:	DATE:	NO.	DATE:
1			3	
2			4	
				37



DRAWN BY: O. NGUYEN/DAH DATE: 6/04  
 CHECKED BY: M.G. CHEEK DATE: 7/04

\* FOR LOCATION OF ELEVATION BETWEEN BRIDGE SEAT BUILDUPS, SEE SECTION A-A FOR CLARITY, WING FOOTING NOT SHOWN IN ELEVATION VIEW. REINFORCING STEEL TYPICAL FOR EACH FOOTING.