

SPAN C

SPAN B

NOTES:

STIRRUPS IN CAP MAY BE SHIFTED AS NECESSARY TO CLEAR ANCHOR BOLTS.

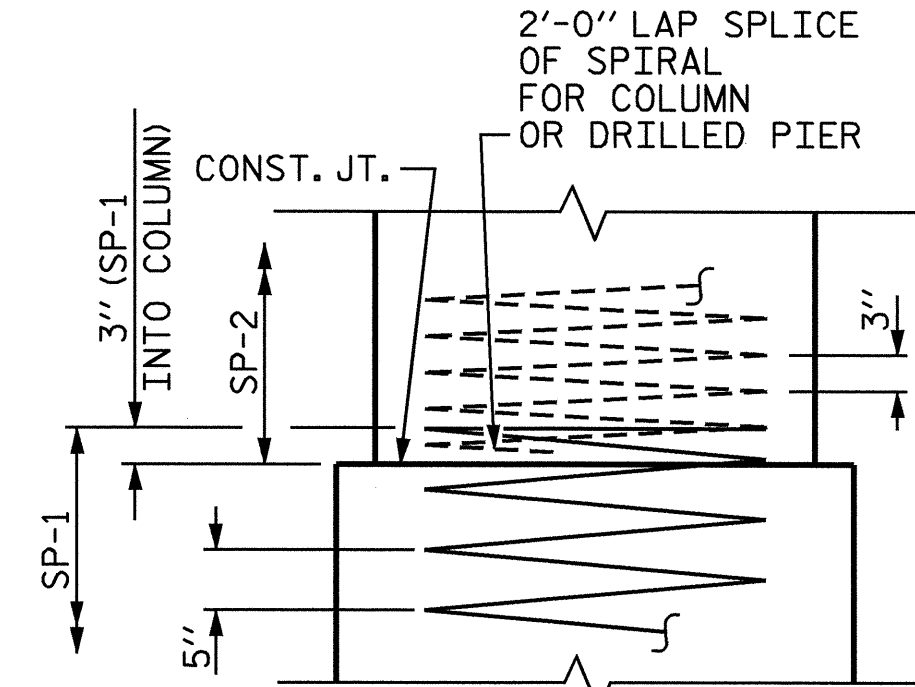
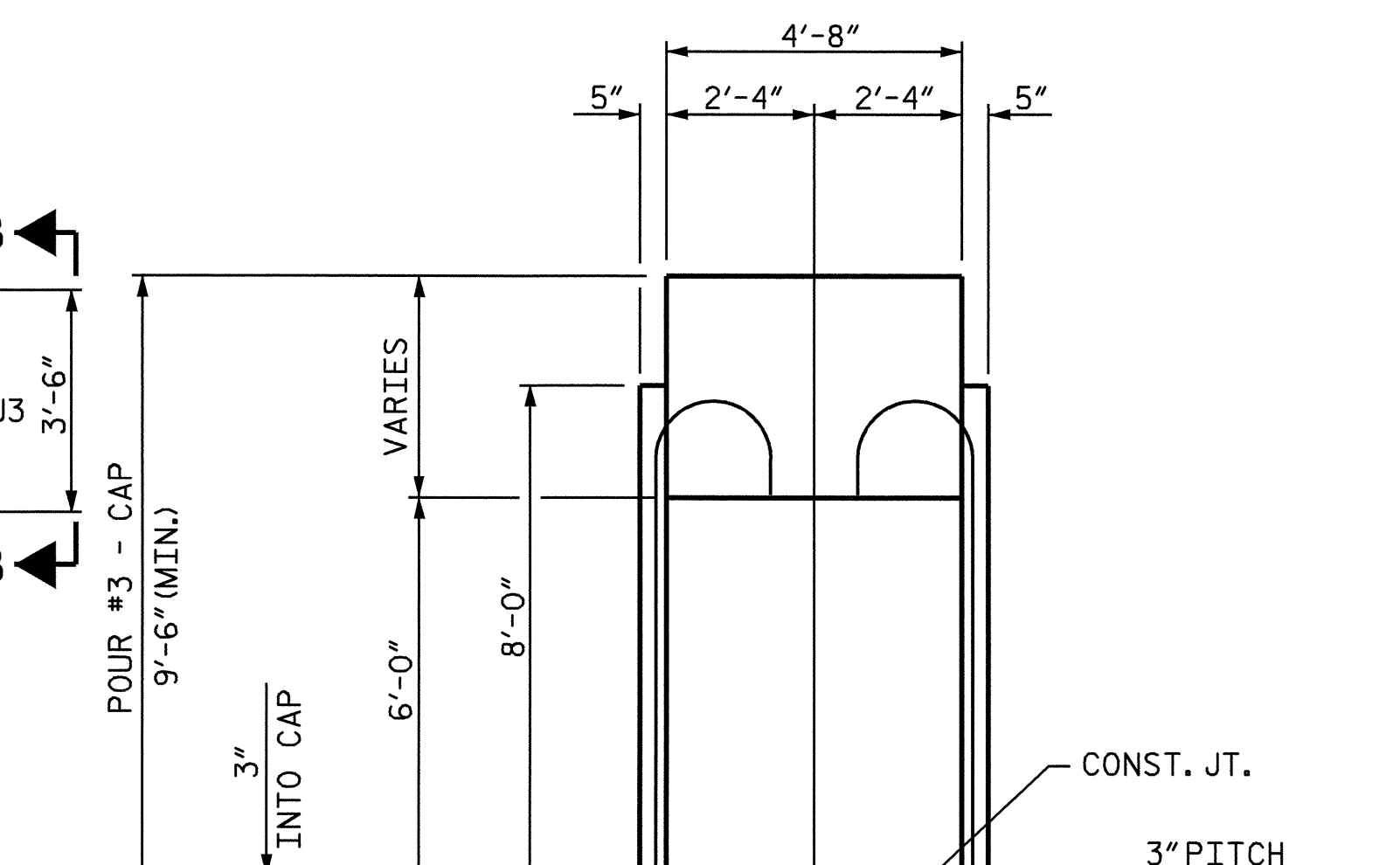
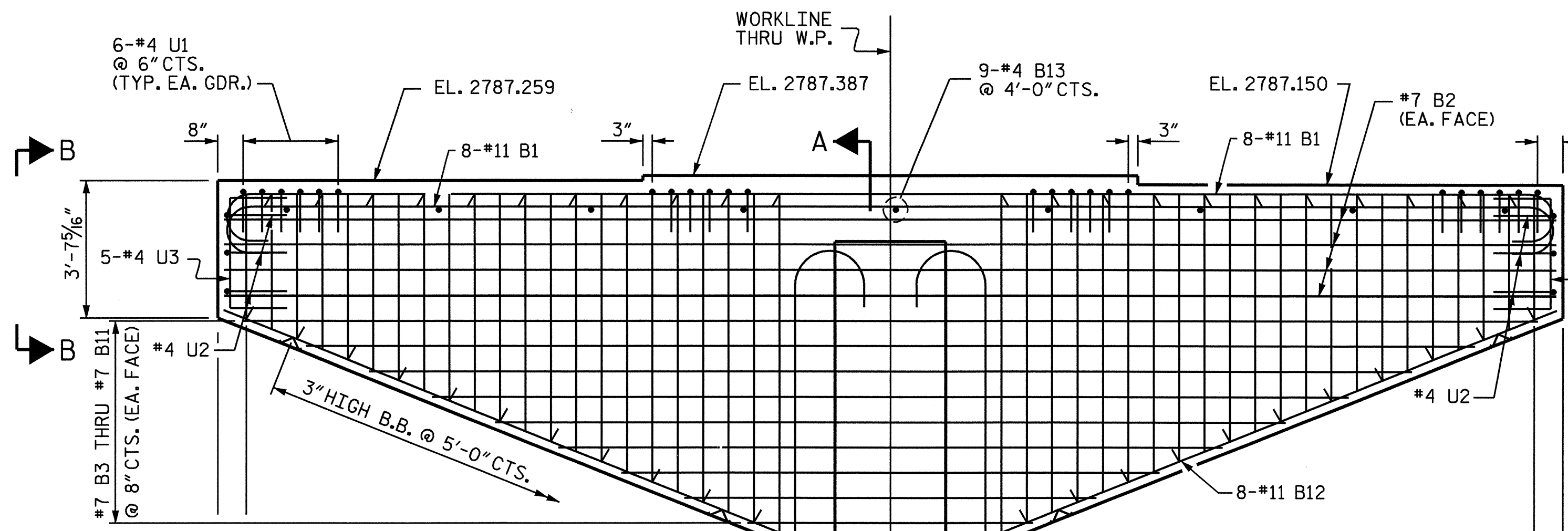
HOOKS ON "V" BARS MAY BE TURNED AS NECESSARY FOR PLACING REINFORCING STEEL.

DETAILED DRAWINGS FOR FALSEWORK AND FORMS FOR THIS HAMMERHEAD BENT SHALL BE SUBMITTED. SEE SHEET SN.

ALL STEEL IN THE DRILLED PIERS IS INCLUDED IN THE PAY ITEMS FOR "REINFORCING STEEL" AND "SPIRAL COLUMN REINFORCING STEEL".

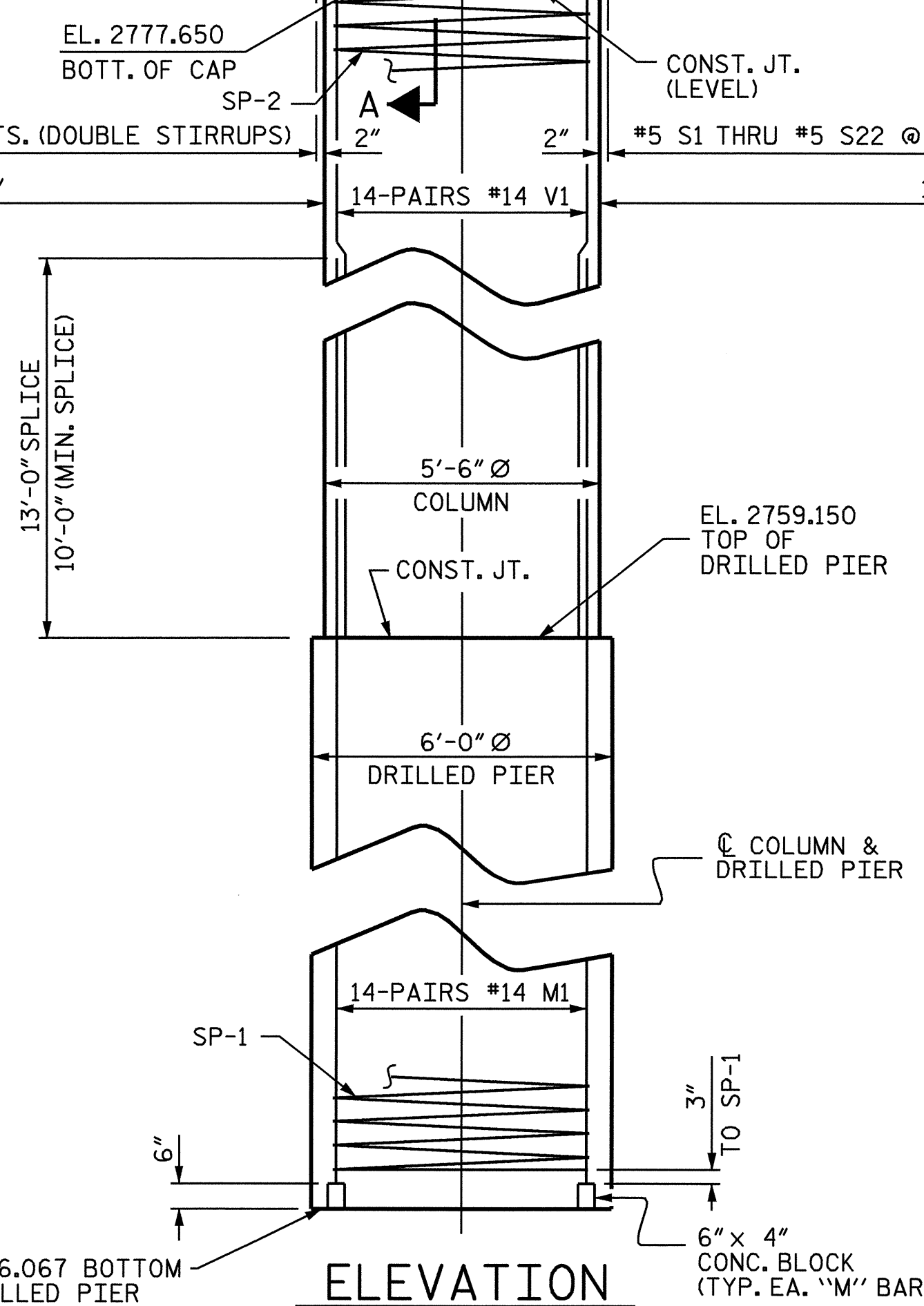
THE CONTRACTOR'S ATTENTION IS CALLED TO THE FACT THAT THE LONGITUDINAL REINFORCEMENT FOR THE DRILLED PIERS IS DETAILED WITH 3 FEET OF EXTRA LENGTH.

SPLICING OF THE LONGITUDINAL BARS IN THE DRILLED PIER WILL NOT BE PERMITTED.

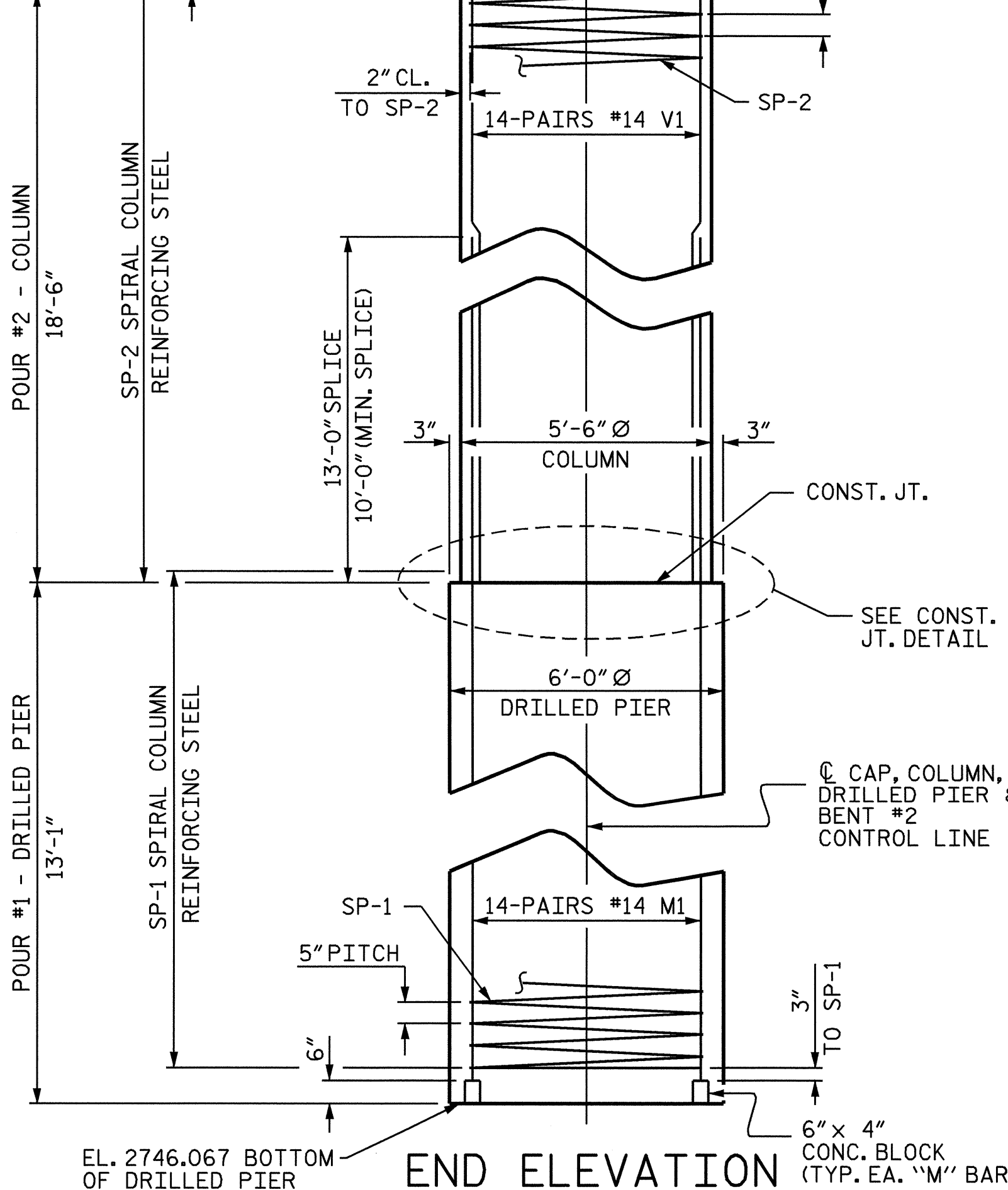


CONSTRUCTION JOINT DETAIL

NOTE: INVERT ALTERNATE STIRRUPS AS SHOWN



ELEVATION



END ELEVATION

DRAWN BY : D. HODGE DATE : 4/04
 CHECKED BY : M.G. CHEEK DATE : 4/04

EL. 2746.067 BOTTOM OF DRILLED PIER

05-AUG-2004 15:27
 W:\sdquady\b4010\dhodge\b401001bt.dgn
 clewis

PROJECT NO. B-4010
 ASHE COUNTY
 STATION: 20+93.60 -L-

SHEET 1 OF 2

STATE OF NORTH CAROLINA
 DEPARTMENT OF TRANSPORTATION
 RALEIGH

SUBSTRUCTURE BENT #2



REVISIONS						SHEET NO.
NO.	BY:	DATE:	NO.	BY:	DATE:	TOTAL SHEETS
1			3			37
2			4			

NCBDS