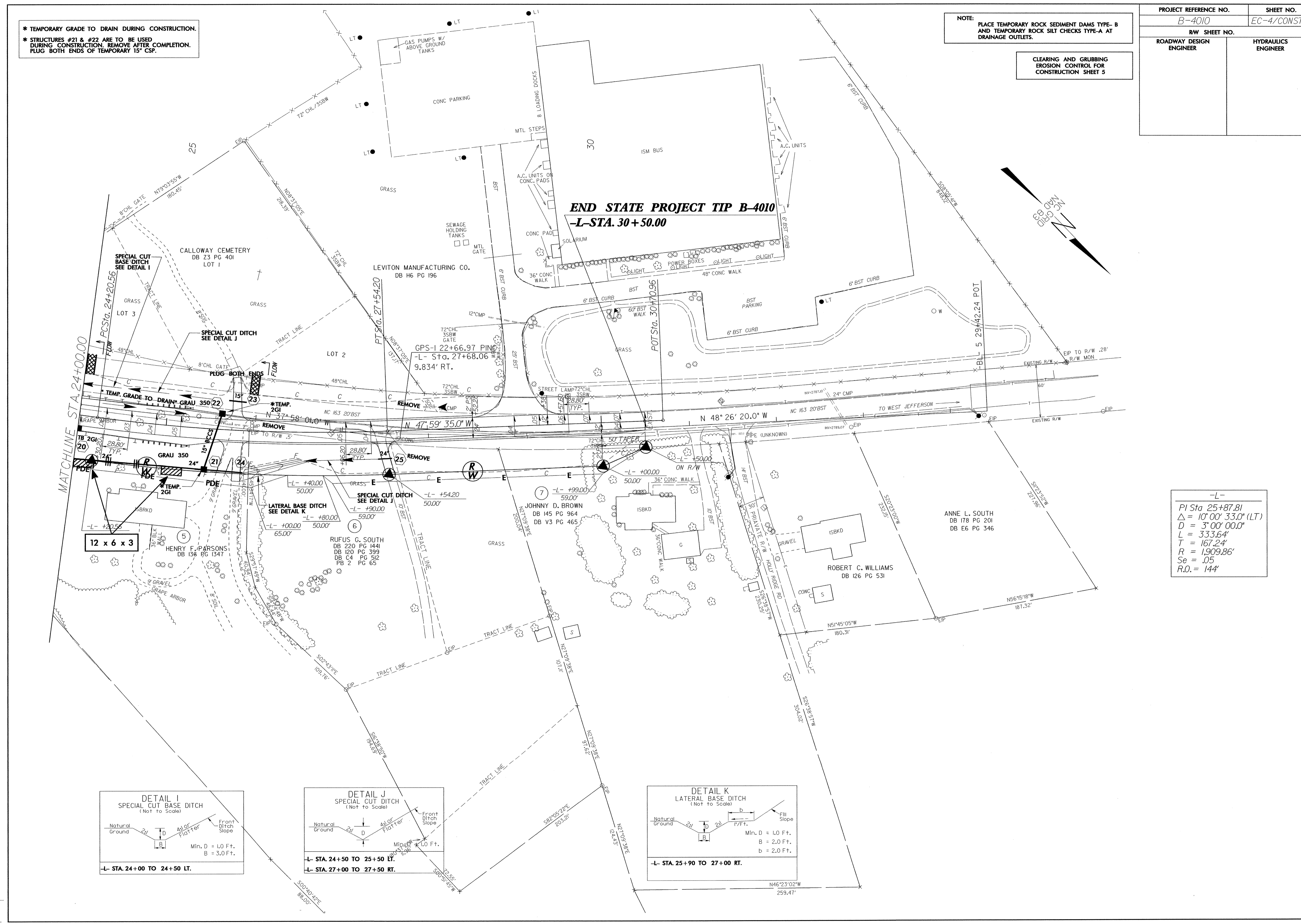


* TEMPORARY GRADE TO DRAIN DURING CONSTRUCTION.
 * STRUCTURES #21 & #22 ARE TO BE USED DURING CONSTRUCTION. REMOVE AFTER COMPLETION. PLUG BOTH ENDS OF TEMPORARY 15" CSP.

NOTE:
 PLACE TEMPORARY ROCK SEDIMENT DAMS TYPE-B AND TEMPORARY ROCK SILT CHECKS TYPE-A AT DRAINAGE OUTLETS.

CLEARING AND GRUBBING EROSION CONTROL FOR CONSTRUCTION SHEET 5

PROJECT REFERENCE NO.	SHEET NO.
B-4010	EC-4/CONST.5
R/W SHEET NO.	HYDRAULICS ENGINEER
ROADWAY DESIGN ENGINEER	



END STATE PROJECT TIP B-4010
-L- STA. 30+50.00

-L-
 PI Sta 25+87.81
 $\Delta = 10^{\circ}00'33.0''$ (LT)
 $D = 3^{\circ}00'00.0''$
 $L = 333.64'$
 $T = 167.24'$
 $R = 1909.86'$
 $Se = .05$
 $R.O. = 144'$

