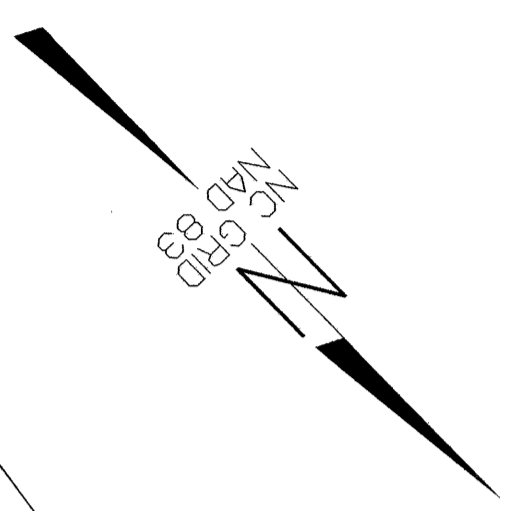
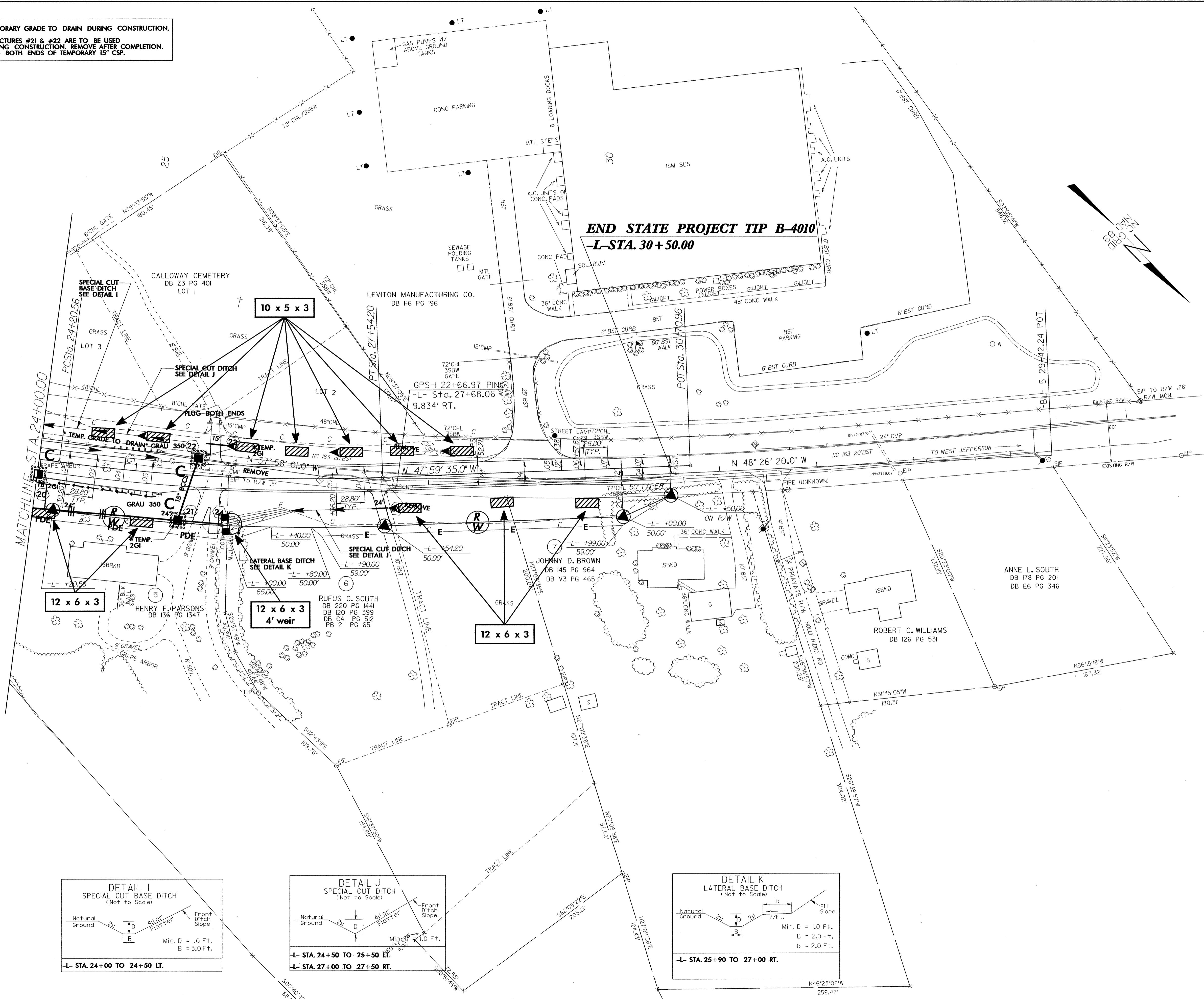


PROJECT REFERENCE NO.	SHEET NO.
B-4010	EC-6/CONST.5
RW SHEET NO.	
ROADWAY DESIGN ENGINEER	HYDRAULICS ENGINEER

* TEMPORARY GRADE TO DRAIN DURING CONSTRUCTION.
 * STRUCTURES #21 & #22 ARE TO BE USED DURING CONSTRUCTION. REMOVE AFTER COMPLETION. PLUG BOTH ENDS OF TEMPORARY 15" CSP.



-L-
 PI Sta 25+87.81
 $\Delta = 10^{\circ}00'33.0''$ (LT)
 $D = 3^{\circ}00'00.0''$
 $L = 333.64$
 $T = 167.24$
 $R = 1,909.86'$
 $Se = .05$
 $R.O. = 144'$

