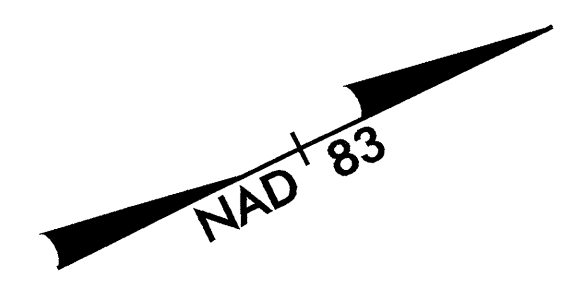


DATUM DESCRIPTION

THE LOCALIZED COORDINATE SYSTEM DEVELOPED FOR THIS PROJECT IS BASED ON THE STATE PLANE COORDINATES ESTABLISHED BY NOGS FOR MONUMENT "CURVE" WITH NAD 83 STATE PLANE GRID COORDINATES OF NORTHING: 143902.868(m) EASTING: 510089.998(m) THE AVERAGE COMBINED GRID FACTOR USED ON THIS PROJECT (GROUND TO GRID) IS: 0.99981043

THE N.C. LAMBERT GRID BEARING LOCALIZED HORIZONTAL GROUND DISTANCE FROM "CURVE" TO "L" STATION 10+49.033 (-L-REV-) IS N 23° 20' 06.5" E 171.90 m

ALL LINEAR DIMENSIONS ARE LOCALIZED HORIZONTAL DISTANCES VERTICAL DATUM USED IS NGVD 29



UTILITY CONSTRUCTION

THE EXISTING WATER LINES ARE OWNED BY THE COUNTY OF ANSON

NOTE: CONTRACTOR SHALL MAKE ALL CONNECTIONS USING NECESSARY FITTINGS.

PROP. -3 20MM CORP. STOP RELOCATE -3 EXIST. 20mm WATER METERS USING 45m OF 20mm COPPER WATER PIPE, TYPE K

FILL OR REMOVE 371m OF ABANDONED 300mm PIPE (AC WATER)

PROP. - 1- 250mm GATE VALVE & VALVE BOX, 1.38 MPA WP

CUT & PLUG

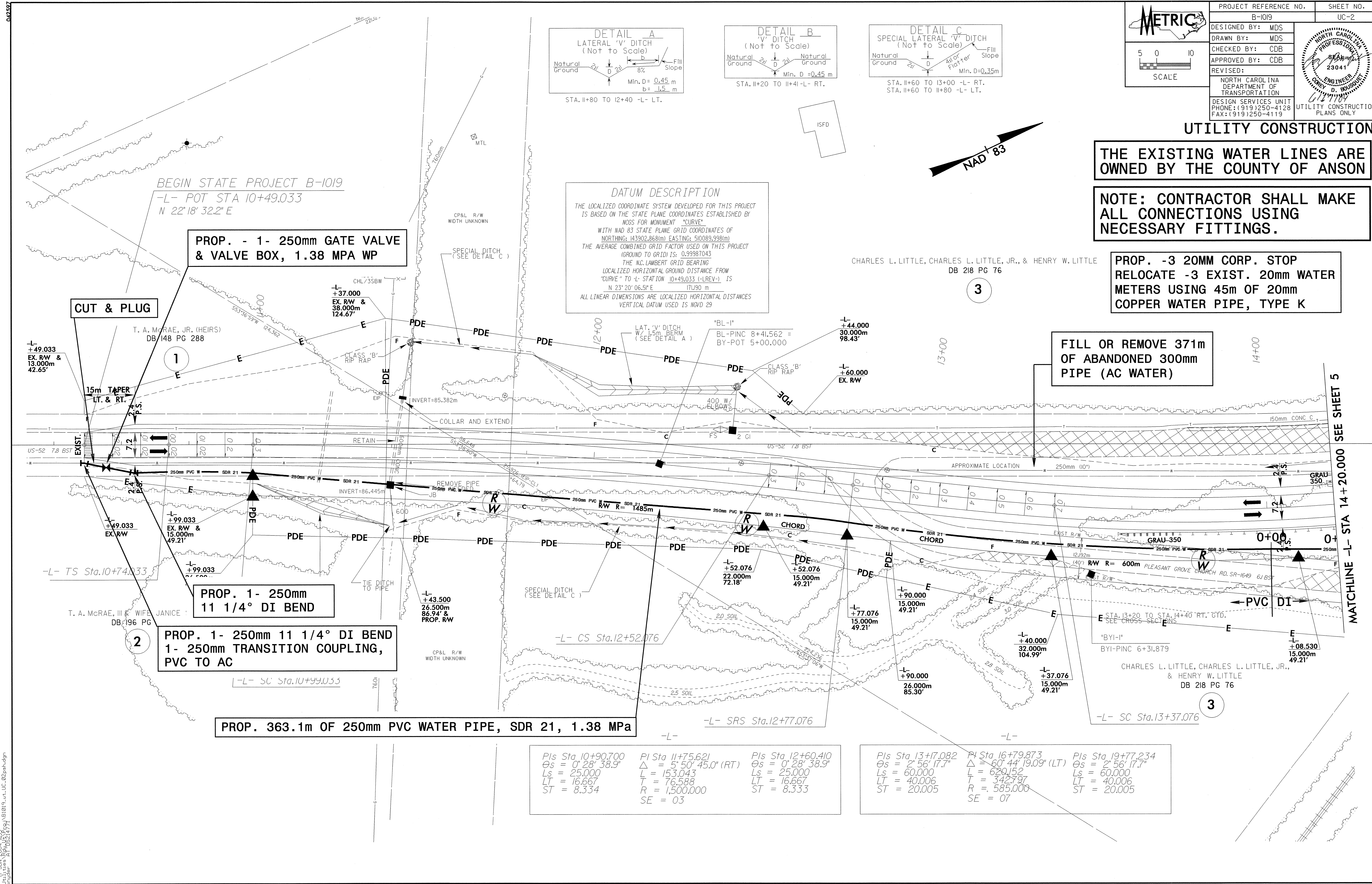
PROP. 1- 250mm 11 1/4° DI BEND

**PROP. 1- 250mm 11 1/4° DI BEND
 1- 250mm TRANSITION COUPLING, PVC TO AC**

PROP. 363.1m OF 250mm PVC WATER PIPE, SDR 21, 1.38 MPa

<p>Pls Sta 10+90.700 Δs = 0° 28' 38.9" Ls = 25.000 LT = 16.667 ST = 8.334</p>	<p>Pl Sta 11+75.621 Δ = 5° 50' 45.0" (RT) L = 153.043 T = 76.588 R = 1,500.000 SE = 03</p>	<p>Pls Sta 12+60.410 Δs = 0° 28' 38.9" Ls = 25.000 LT = 16.667 ST = 8.333</p>
---	---	---

<p>Pls Sta 13+17.082 Δs = 2° 56' 17.7" Ls = 60.000 LT = 40.006 ST = 20.005</p>	<p>Pl Sta 16+79.873 Δ = 60° 44' 19.09" (LT) L = 620.152 T = 342.797 R = 585.000 SE = 07</p>	<p>Pls Sta 19+77.234 Δs = 2° 56' 17.7" Ls = 60.000 LT = 40.006 ST = 20.005</p>
--	--	--



PLAN: 17-JUN-2004 10:56 AM
 FILE: N:\B1019\ut_uc_02psh.dgn
 USER: mds\mduffy