

2/12/04

12-JUL-2004 16:57
DKEason rd-04oc34

METRIC

PROJECT REFERENCE NO. B-1019 SHEET NO. 4

R/W SHEET NO.

ROADWAY DESIGN ENGINEER

HYDRAULICS ENGINEER

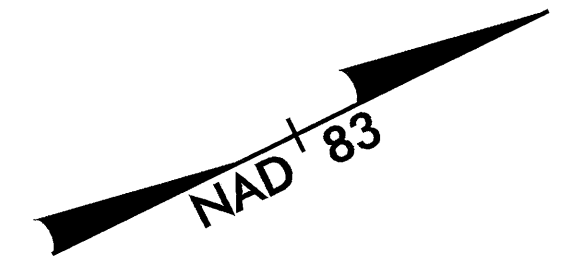
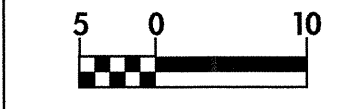
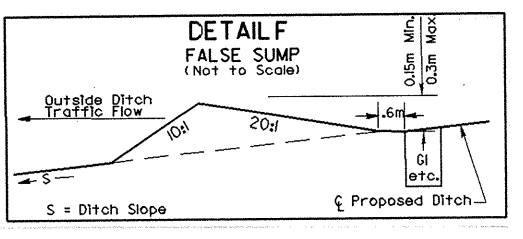
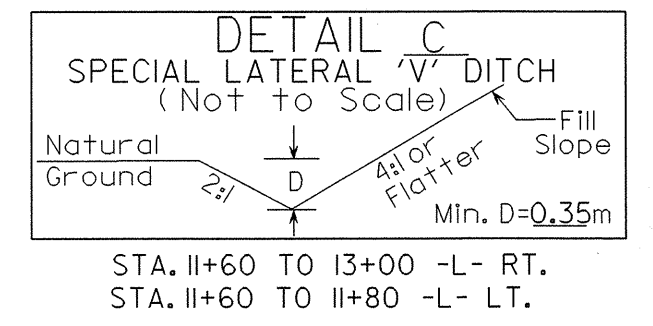
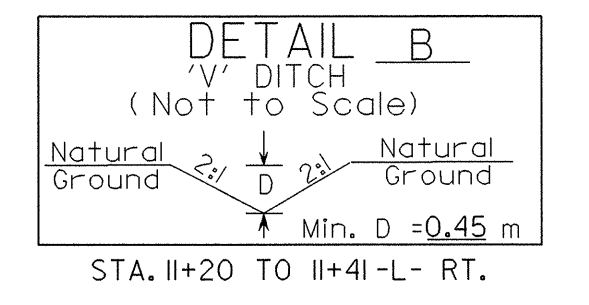
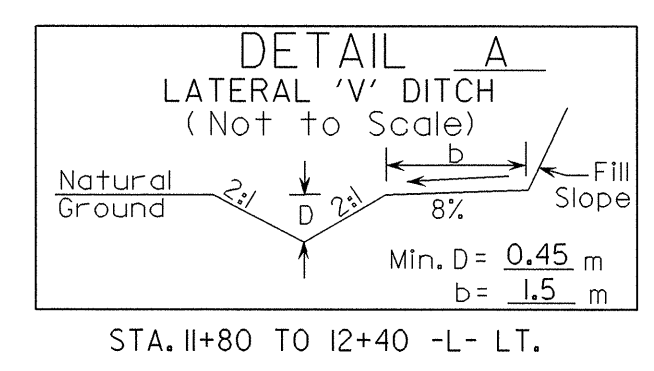
SEAL 14493

SEAL 16746

CONST. REV.

R/W REV.

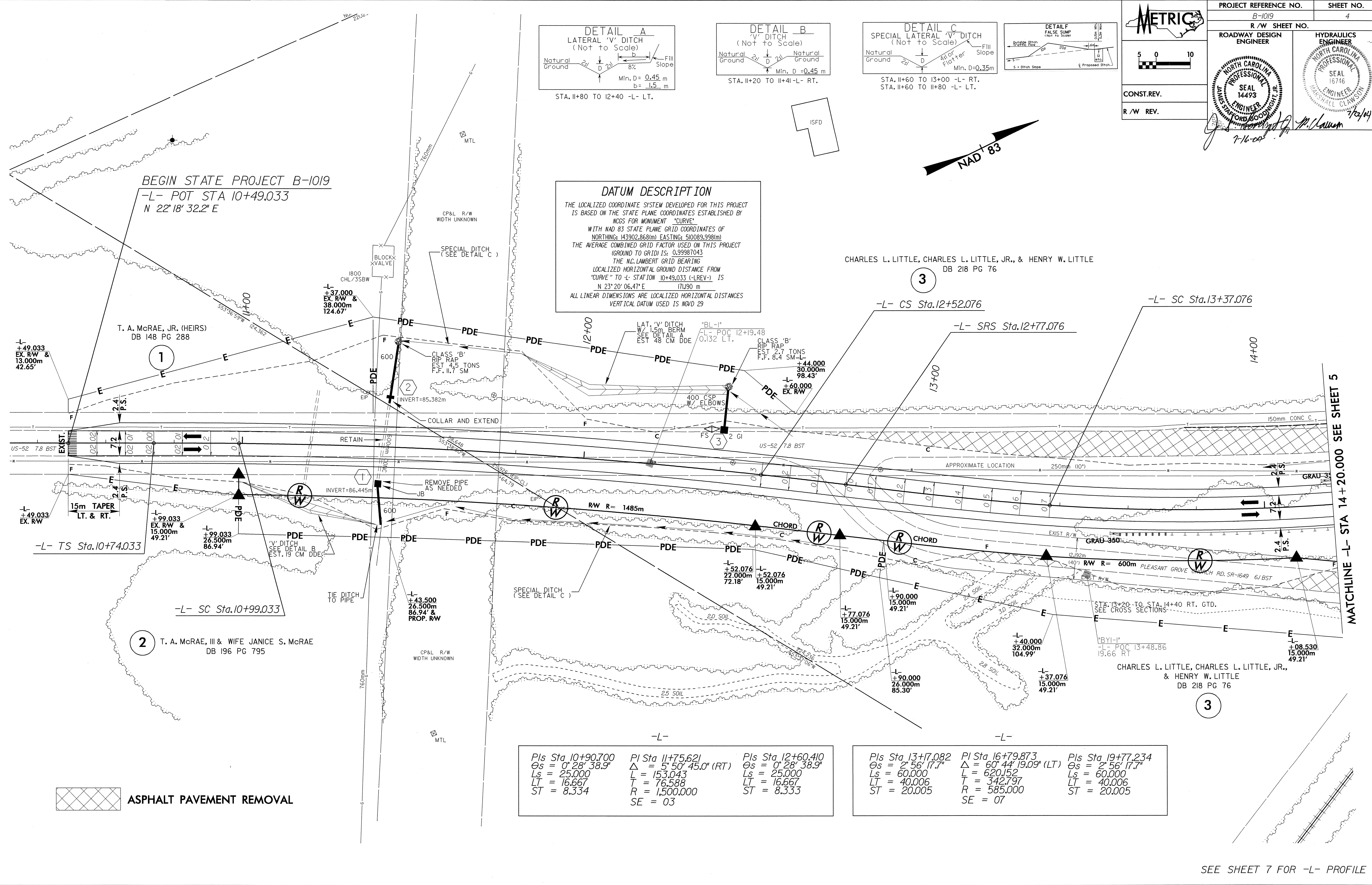
7-16-04



DATUM DESCRIPTION

THE LOCALIZED COORDINATE SYSTEM DEVELOPED FOR THIS PROJECT IS BASED ON THE STATE PLANE COORDINATES ESTABLISHED BY NCS FOR MONUMENT "CURVE" WITH NAD 83 STATE PLANE GRID COORDINATES OF NORTHING: 143902.868(m) EASTING: 510089.998(m) THE AVERAGE COMBINED GRID FACTOR USED ON THIS PROJECT (GROUND TO GRID) IS: 0.99987043 THE N.C. LAMBERT GRID BEARING LOCALIZED HORIZONTAL GROUND DISTANCE FROM "CURVE" TO -L- STATION 10+49.033 (-LREV-) IS N 23° 20' 06.47" E 174.90 m ALL LINEAR DIMENSIONS ARE LOCALIZED HORIZONTAL DISTANCES VERTICAL DATUM USED IS NGVD 29

CHARLES L. LITTLE, CHARLES L. LITTLE, JR., & HENRY W. LITTLE
DB 218 PG 76



MATCHLINE -L- STA 14 + 20.000 SEE SHEET 5

Pls Sta 10+90.700 Os = 0° 28' 38.9"	Pls Sta 11+75.621 Δ = 5° 50' 45.0" (RT) Ls = 153.043 T = 76.588 R = 1,500.000 SE = 03	Pls Sta 12+60.410 Os = 0° 28' 38.9"
Ls = 25.000 LT = 16.667 ST = 8.334		Ls = 25.000 LT = 16.667 ST = 8.333

Pls Sta 13+17.082 Os = 2° 56' 17.7"	Pls Sta 16+79.873 Δ = 60° 44' 19.09" (LT) Ls = 620.152 T = 342.797 R = 585.000 SE = 07	Pls Sta 19+77.234 Os = 2° 56' 17.7"
Ls = 60.000 LT = 40.006 ST = 20.005		Ls = 60.000 LT = 40.006 ST = 20.005

ASPHALT PAVEMENT REMOVAL

SEE SHEET 7 FOR -L- PROFILE