

-L-

BM # 3 NCGS MONUMENT "HAYDEN"
-BL- STA. 16+20.541
N 144,943.935 E 510,202.112
EL. 83.196

PROJECT REFERENCE NO. B-1019 SHEET NO. 8

METRIC

5 0 10

CONST. REV.
R/W REV.

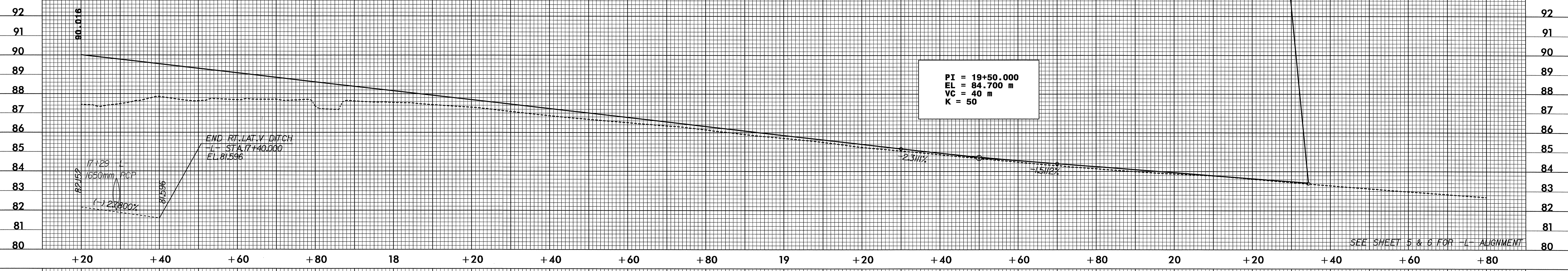
ROADWAY DESIGN ENGINEER
NORTH CAROLINA PROFESSIONAL SEAL 14493
JAMES STAFFORD GOODRIGHT JR.
7/22/04

HYDRAULICS ENGINEER
NORTH CAROLINA PROFESSIONAL SEAL 16746
M. CLAYTON
7/22/04

PIPE HYDRAULIC DATA
DRAINAGE STRUCTURE NO. 3

DRAINAGE AREA = 1.5 HA
DESIGN FREQUENCY = 0.50 YRS
DESIGN DISCHARGE = 0.58 CMS
DESIGN HW ELEVATION = 83.32 M
100 YEAR DISCHARGE = 0.74 CMS
100 YEAR HW ELEVATION = 83.32 M
OVERTOPPING FREQUENCY = 0.500+YRS
OVERTOPPING DISCHARGE = 1.8 CMS
OVERTOPPING ELEVATION = 90.2 M

END GRADE -L-
STA 20+34.371
ELEV. 83.425 m



-Y-

BEGIN GRADE -Y-
STA 13+05.319
ELEV. 92.155 m

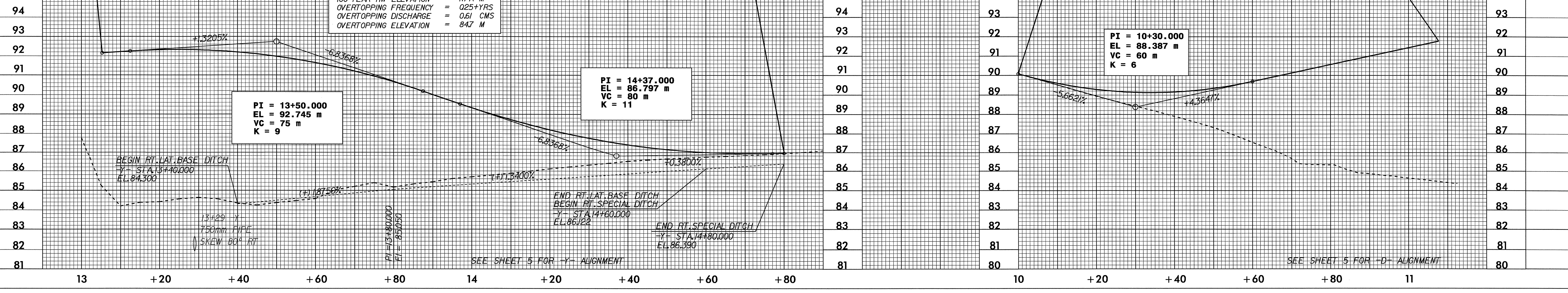
PIPE HYDRAULIC DATA
DRAINAGE STRUCTURE NO. 2

DRAINAGE AREA = 3.0 HA
DESIGN FREQUENCY = 0.25 YRS
DESIGN DISCHARGE = 0.58 CMS
DESIGN HW ELEVATION = 84.66 M
100 YEAR DISCHARGE = N/A CMS
100 YEAR HW ELEVATION = N/A M
OVERTOPPING FREQUENCY = 0.25+YRS
OVERTOPPING DISCHARGE = 0.61 CMS
OVERTOPPING ELEVATION = 84.7 M

END GRADE -Y-
STA 14+80.000
ELEV. 86.960 m

BEGIN GRADE -D-
STA 10+00.000
ELEV. 90.086 m

END GRADE -D-
STA 11+07.736
ELEV. 91.780 m



20-JUL-2004 10:52 AM RD214494.dwg
DK/Eason AT RD214494