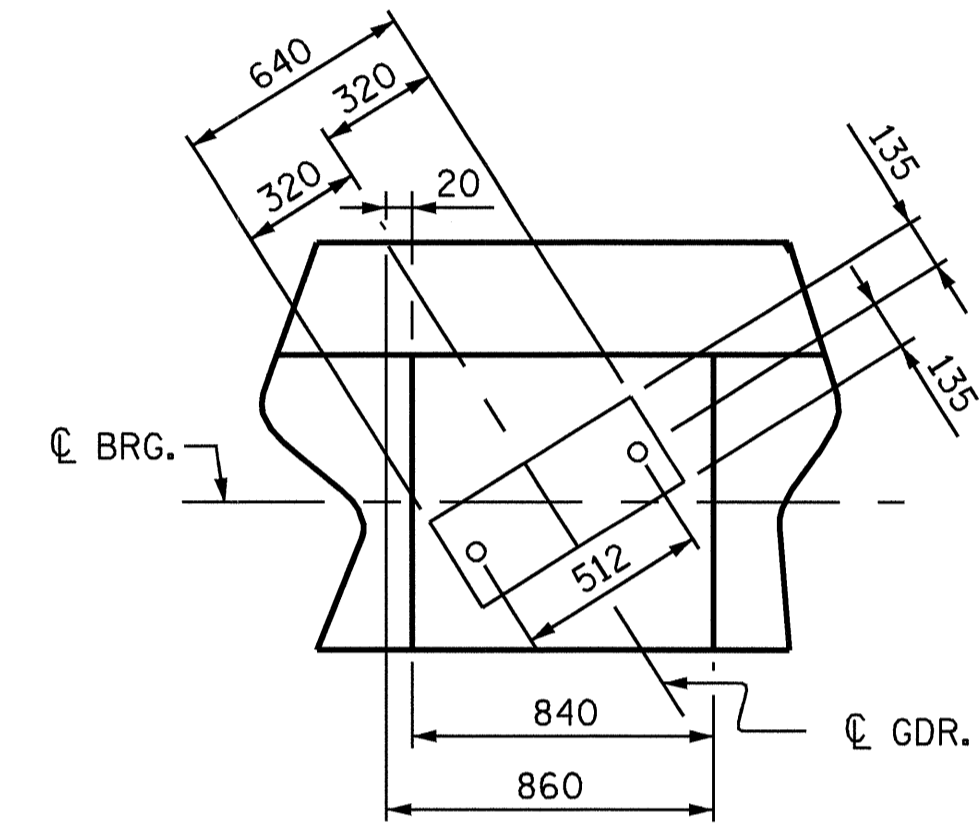
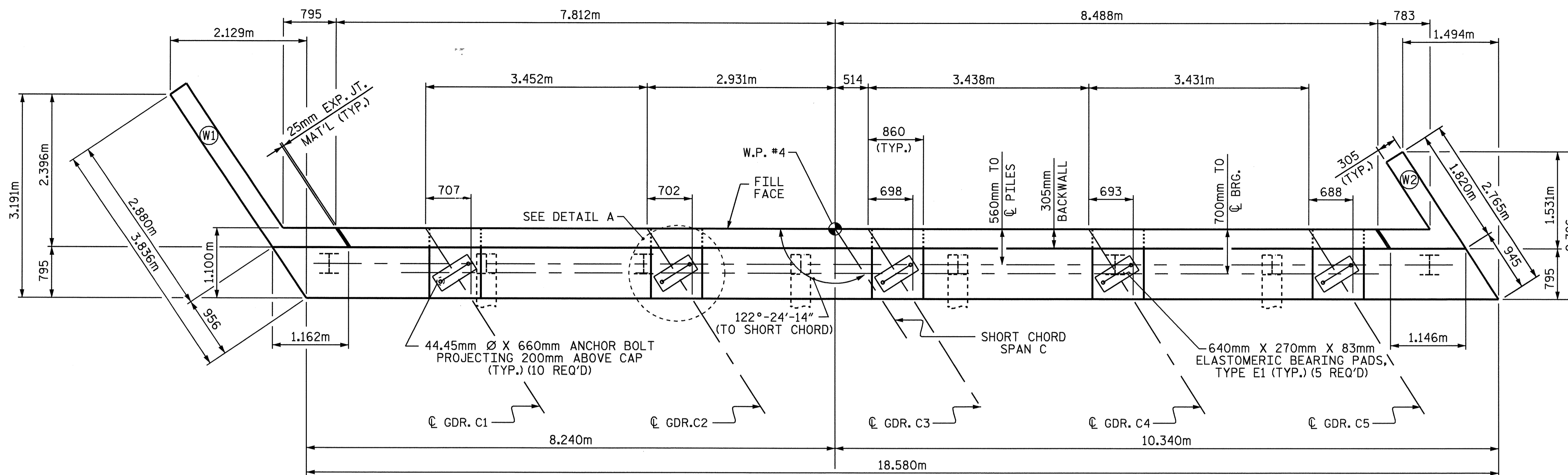


NOTES

- STIRRUPS IN CAP MAY BE SHIFTED AS NECESSARY TO CLEAR ANCHOR BOLTS.
- FOR EPOXY PROTECTIVE COATING, SEE SPECIAL PROVISIONS.
- PIPE DRAINS MAY BE SHIFTED SLIGHTLY AS NECESSARY TO CLEAR REINFORCING STEEL AND ANCHOR BOLTS.
- BACKWALL SHALL BE PLACED BEFORE APPLYING THE EPOXY PROTECTIVE COATING.
- THE TOP SURFACE AREAS OF THE END BENT CAPS SHALL BE CURED IN ACCORDANCE WITH THE STANDARD SPECIFICATIONS EXCEPT THE MEMBRANE CURING COMPOUND METHOD SHALL NOT BE USED.
- THE TOP SURFACE OF THE CAP EXCEPT THE BRIDGE SEAT BUILDUPS SHALL BE SLOPED TRANSVERSELY FROM THE FILL FACE TO THE BACK FACE AT THE RATE OF 2%.
- FOR PIPE DRAIN DETAILS, SEE SHEET 3 OF 3.
- FOR PILE SPLICE DETAILS, SEE SHEET 3 OF 3.
- THE CONTRACTOR SHALL PROVIDE FOR INSTALLATION OF THE 102mm DIAMETER DRAIN PIPE THROUGH THE WING WALL AS REQUIRED FOR REINFORCED BRIDGE APPROACH FILLS, SEE THE ROADWAY PLANS. REINFORCING STEEL IN THE WING WALL MAY BE SHIFTED AS NECESSARY TO CLEAR THE DRAIN PIPE.
- FOR TEMPORARY DRAINAGE DETAILS, SEE SHEET 3 OF 3.

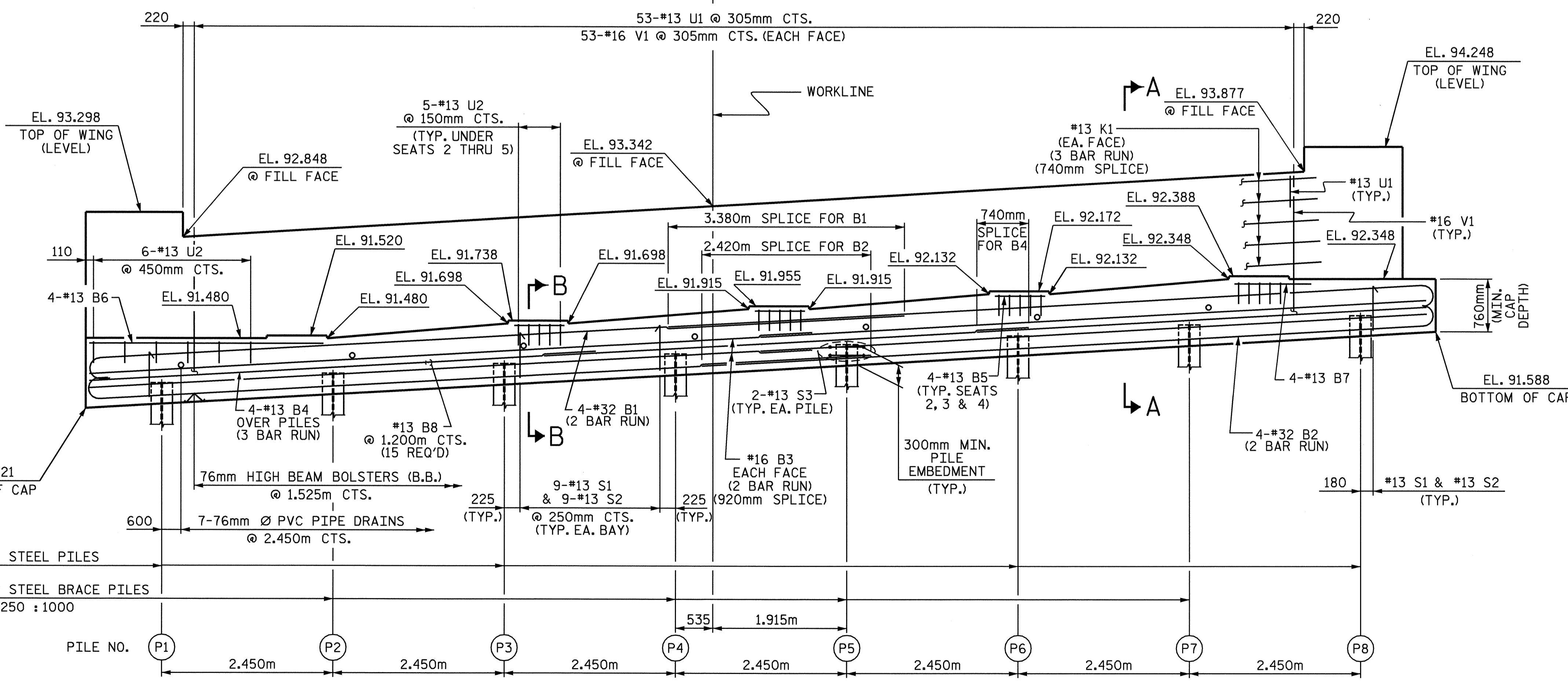


PILE NO.	ELEVATION
P1	90.871
P2	91.012
P3	91.153
P4	91.294
P5	91.435
P6	91.576
P7	91.717
P8	91.858

PROJECT NO. B-1019
 ANSON COUNTY
 STATION: 14+94.156 -L-

SHEET 1 OF 3

STATE OF NORTH CAROLINA DEPARTMENT OF TRANSPORTATION RALEIGH						SHEET NO.
SUBSTRUCTURE END BENT #2						S-28
REVISIONS						TOTAL SHEETS
NO.	BY:	DATE:	NO.	BY:	DATE:	35
1			3			
2			4			



(WINGS NOT SHOWN FOR CLARITY)
 (FOR WING DETAILS, SEE SHEET 2 OF 3)

DRAWN BY: D. G. ELY DATE: 11/03
 CHECKED BY: A. B. NATK DATE: 1/15/04