

STATE OF NORTH CAROLINA  
 DEPT. OF TRANSPORTATION  
 DIVISION OF HIGHWAYS  
 RALEIGH, N.C.

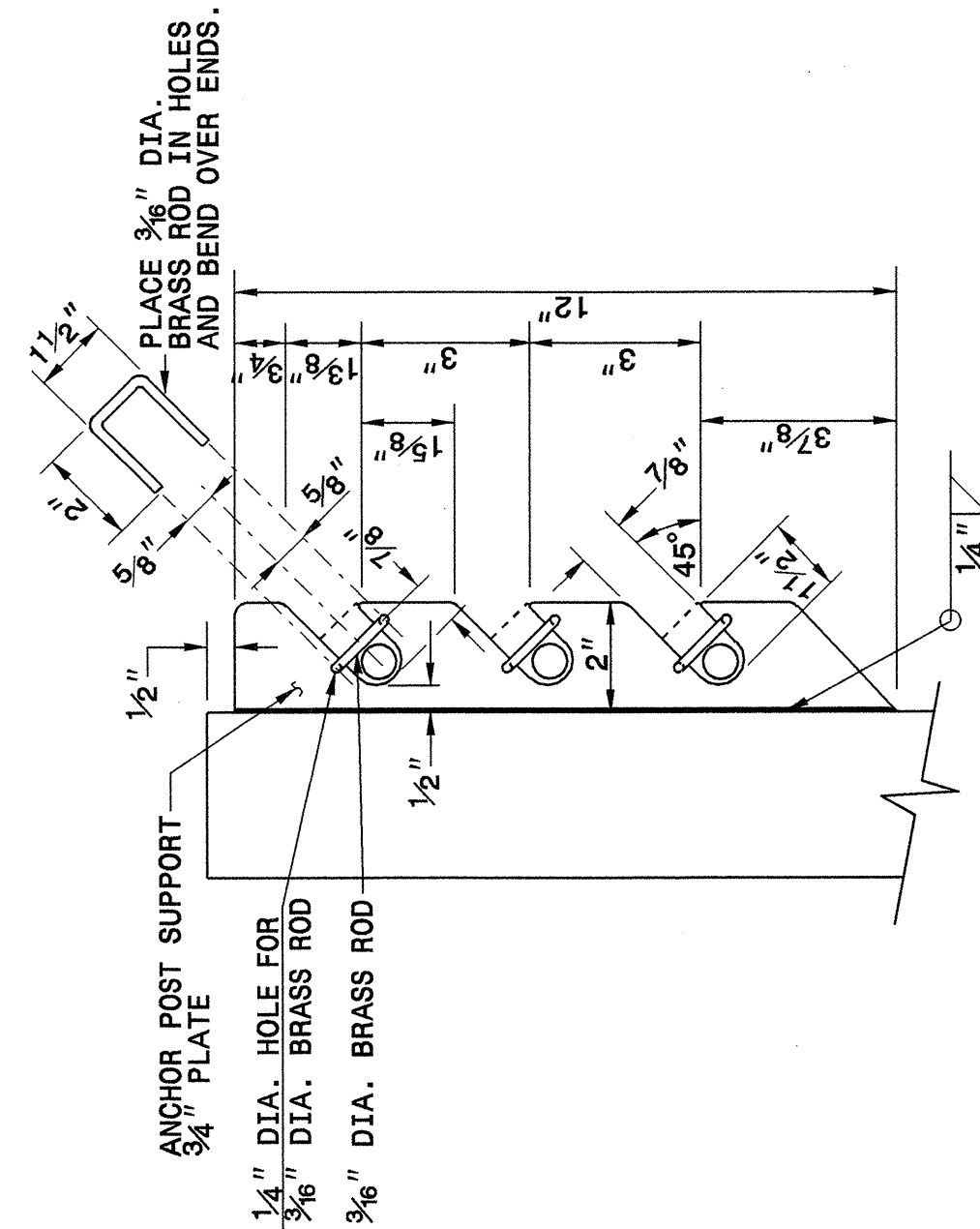
ENGLISH DETAIL DRAWING FOR  
**CABLE GUIDERAIL**  
 ANCHOR POST DETAILS

SHEET 7 OF 11  
**865D01**

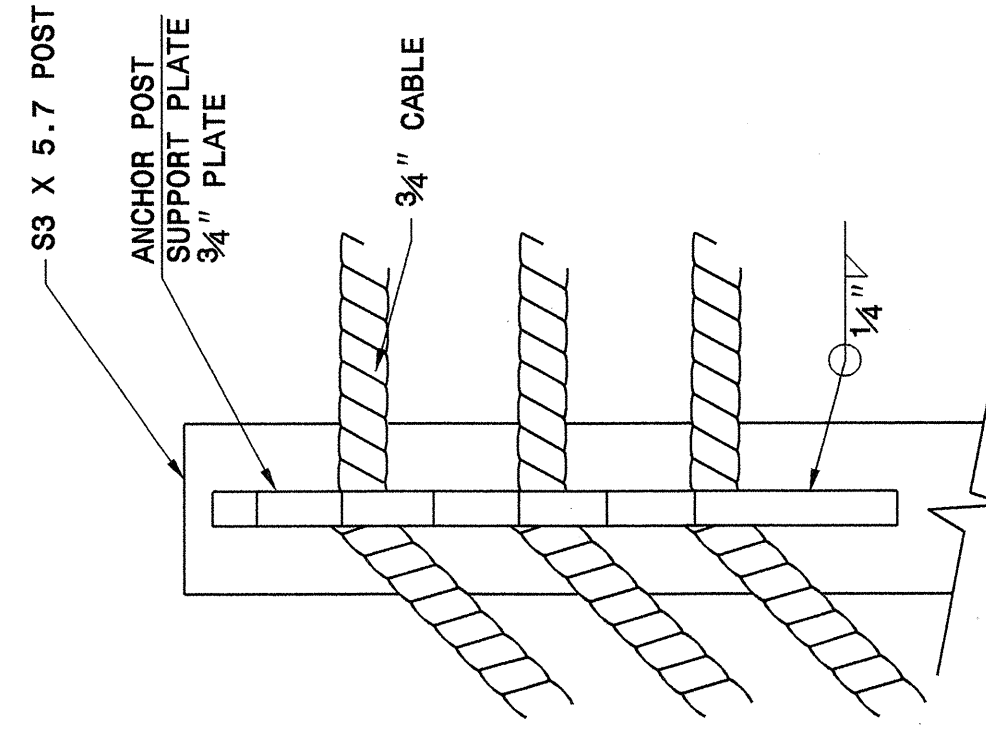
STATE OF NORTH CAROLINA  
 DEPT. OF TRANSPORTATION  
 DIVISION OF HIGHWAYS  
 RALEIGH, N.C.

ENGLISH DETAIL DRAWING FOR  
**CABLE GUIDERAIL**  
 ANCHOR POST DETAILS

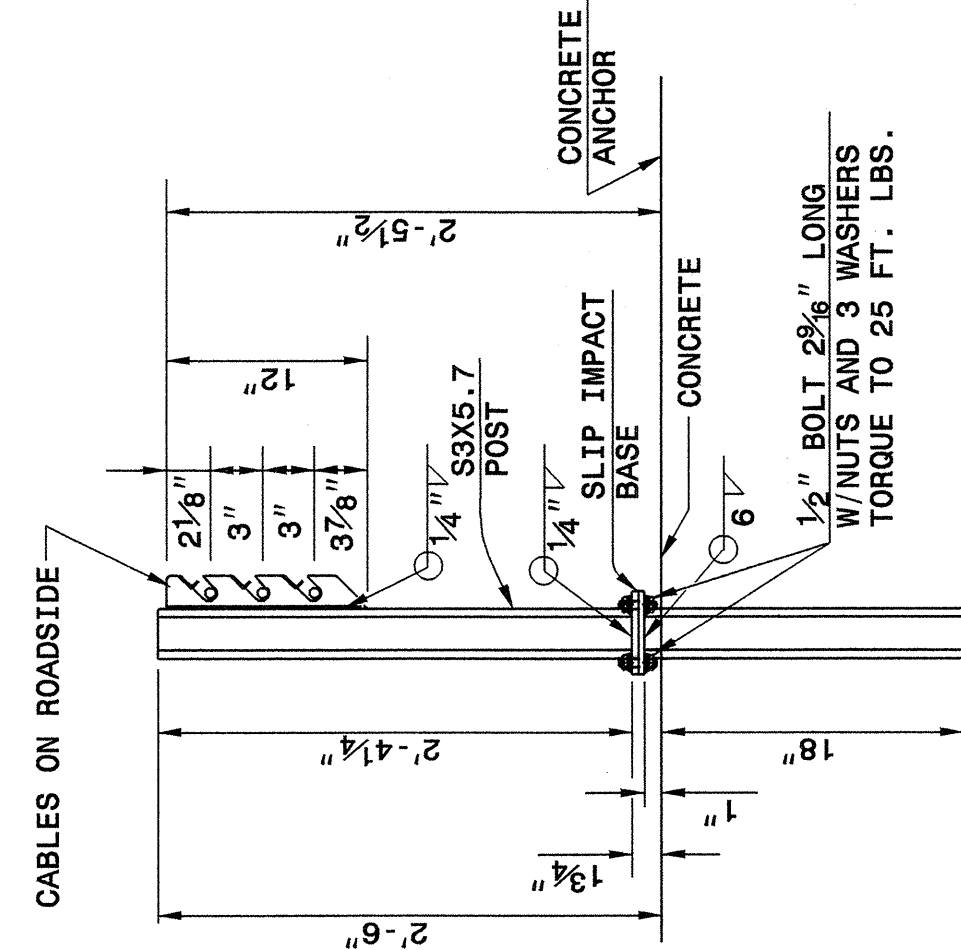
SHEET 7 OF 11  
**865D01**



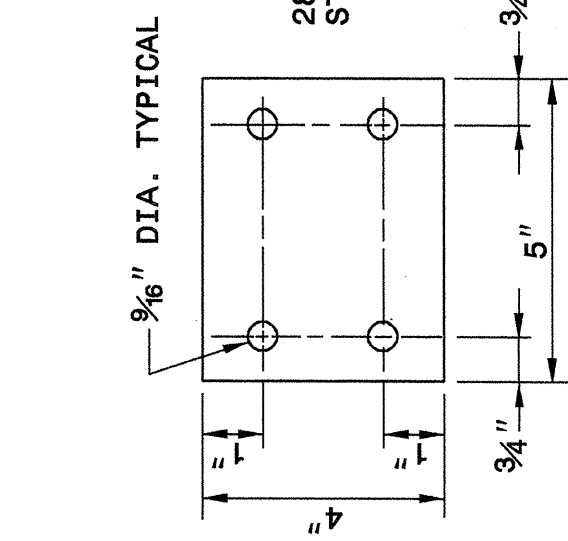
**SIDE VIEW OF POST TOP**



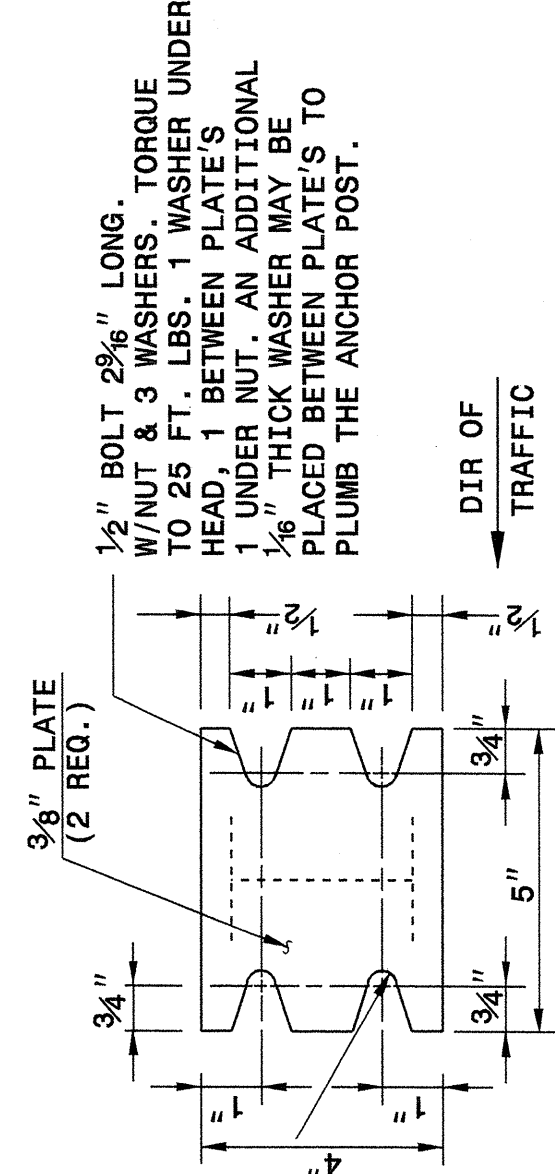
**FRONT VIEW OF POST TOP**  
 (ROAD SIDE)



**ANCHOR POST DETAIL**



**KEEPER PLATE**



**SLIP IMPACT BASE**  
 (KEEPER PLATE NOT SHOWN)

1/2" BOLT 2 3/8" LONG, TORQUE W/NUT & 3 WASHERS. TORQUE TO 25 FT. LBS. 1 WASHER UNDER HEAD, 1 BETWEEN PLATES & 1 UNDER NUT. AN ADDITIONAL 1/16" THICK WASHER MAY BE PLACED BETWEEN PLATES TO PLUMB THE ANCHOR POST.

STATE OF NORTH CAROLINA  
 DEPT. OF TRANSPORTATION  
 DIVISION OF HIGHWAYS  
 RALEIGH, N.C.

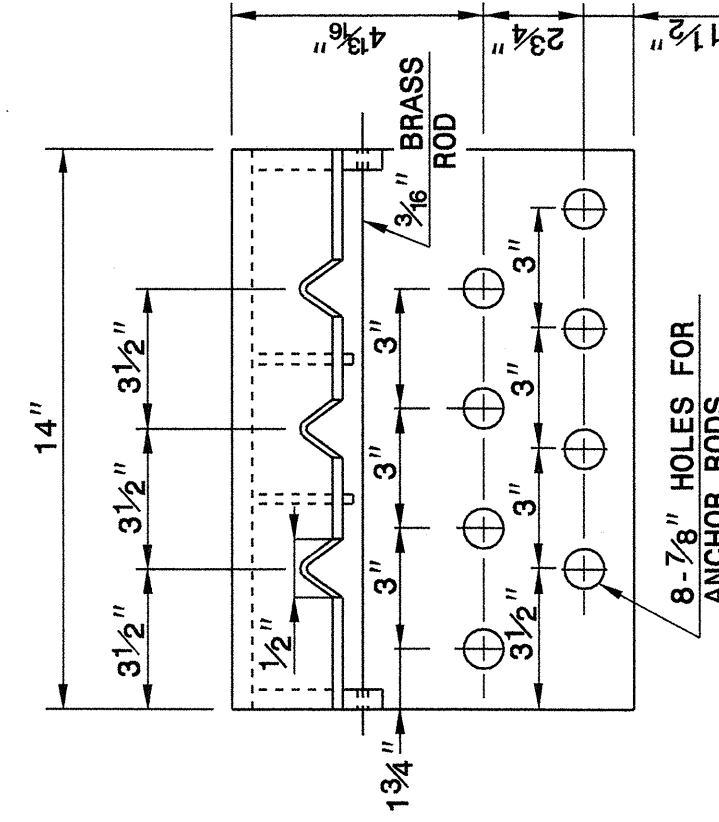
ENGLISH DETAIL DRAWING FOR  
**CABLE GUIDERAIL**  
 ANCHOR DETAILS

SHEET 8 OF 11  
**865D01**

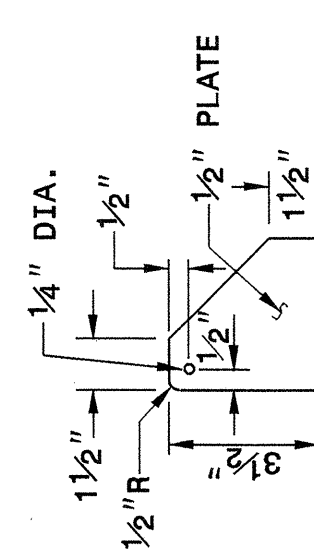
STATE OF NORTH CAROLINA  
 DEPT. OF TRANSPORTATION  
 DIVISION OF HIGHWAYS  
 RALEIGH, N.C.

ENGLISH DETAIL DRAWING FOR  
**CABLE GUIDERAIL**  
 ANCHOR DETAILS

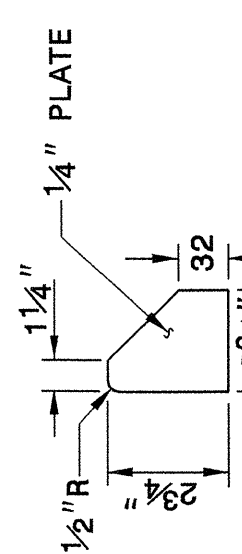
SHEET 8 OF 11  
**865D01**



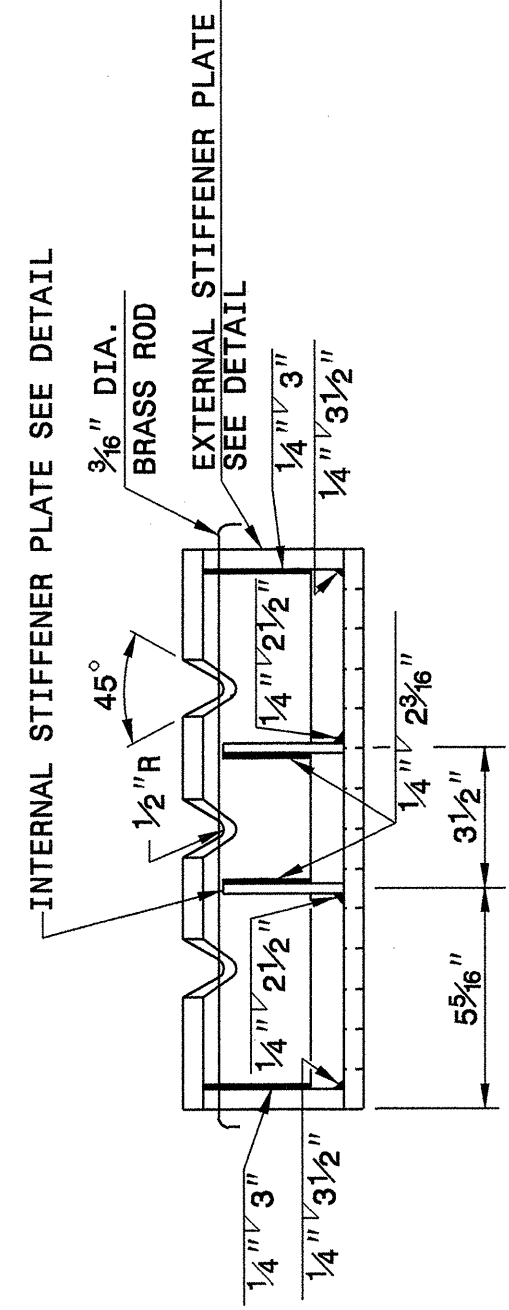
**ANCHOR ANGLE DETAILS**



**EXTERNAL STIFFENER PLATE**

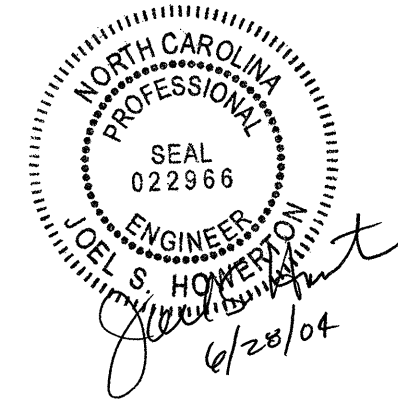


**INTERNAL STIFFENER PLATE**



**BREAKAWAY ANCHOR ANGLE**

NOTE: SUBMIT ALTERNATE METHODS OF FABRICATING ANCHOR ANGLES FOR APPROVAL.



DESIGN SERVICES UNIT  
 STANDARDS AND SPECIAL DESIGN  
 Office 919-250-4128 FAX 919-250-4119

**SEE PLATE FOR TITLE**

ORIGINAL BY: 2002 STANDARDS DATE: 1-15-02  
 MODIFIED BY: E.E. WARD DATE: 4-07-04  
 CHECKED BY: A.B. L... DATE: 4-7-04  
 FILE SPEC.: /usr/std/02std9 to details/english/865d01/865d01.dgn