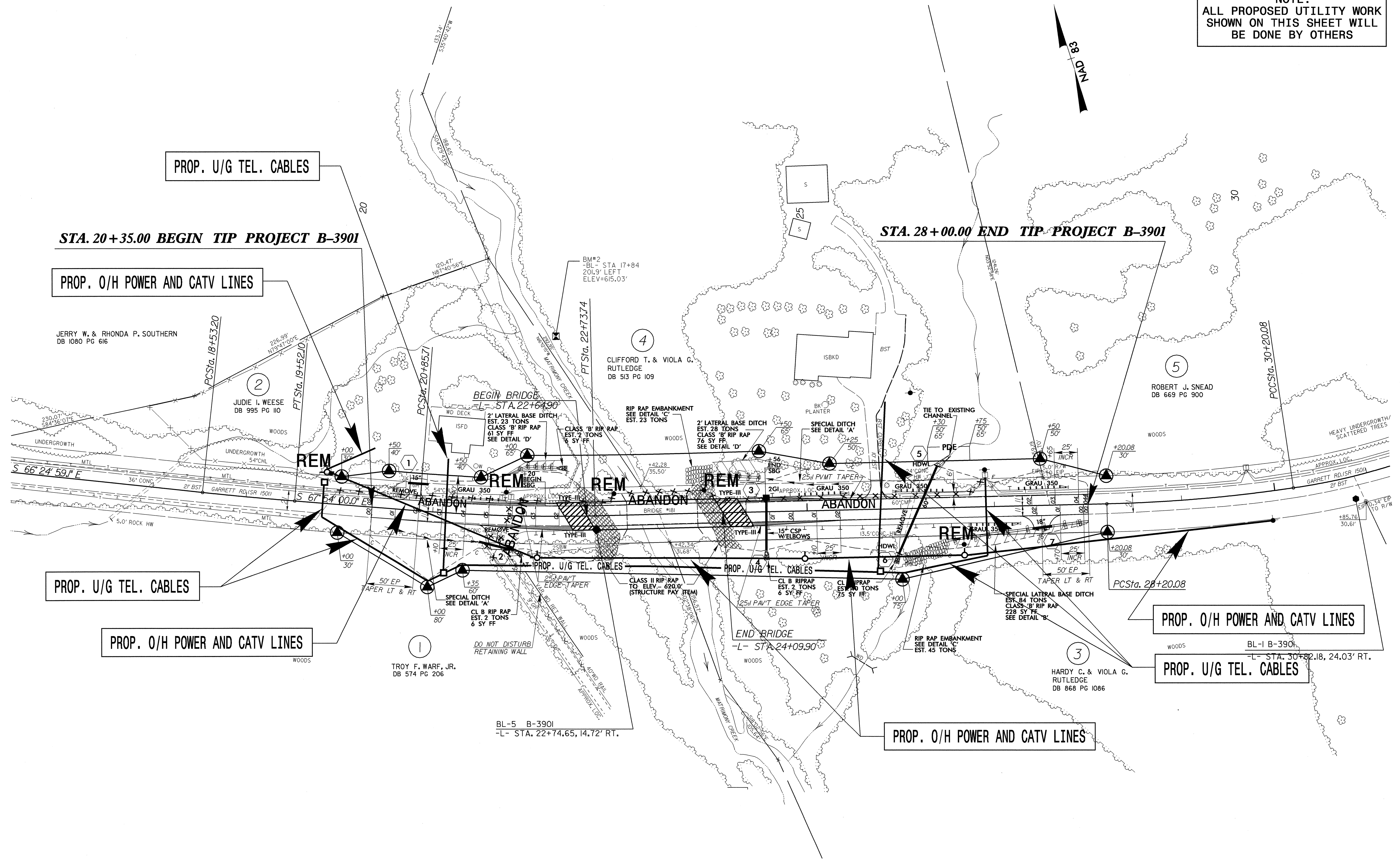


UTILITIES BY OTHERS

NOTE:
ALL PROPOSED UTILITY WORK
SHOWN ON THIS SHEET WILL
BE DONE BY OTHERS

8/17/99

30-JUN-2004 14:29
P:\Utilities\B3901\ut_002.s4psh.dgn
Abandon



PROP. U/G TEL. CABLES

STA. 20+35.00 BEGIN TIP PROJECT B-3901

PROP. O/H POWER AND CATV LINES

JERRY W. & RHONDA P. SOUTHERN
DB 1080 PG 616

2

JUDIE I. WEESE
DB 995 PG 110

4

CLIFFORD T. & VIOLA G.
RUTLEDGE
DB 513 PG 109

5

ROBERT J. SNEAD
DB 669 PG 900

3

HARDY C. & VIOLA G.
RUTLEDGE
DB 868 PG 1086

PROP. U/G TEL. CABLES

PROP. O/H POWER AND CATV LINES

1

TROY F. WARF, JR.
DB 574 PG 206

BL-5 B-3901
-L- STA. 22+74.65, 14.72' RT.

PROP. O/H POWER AND CATV LINES

PROP. O/H POWER AND CATV LINES

PROP. U/G TEL. CABLES

BL-1 B-3901
-L- STA. 30+82.18, 24.03' RT.