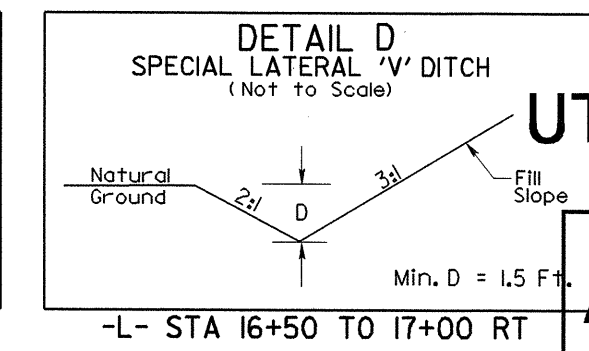
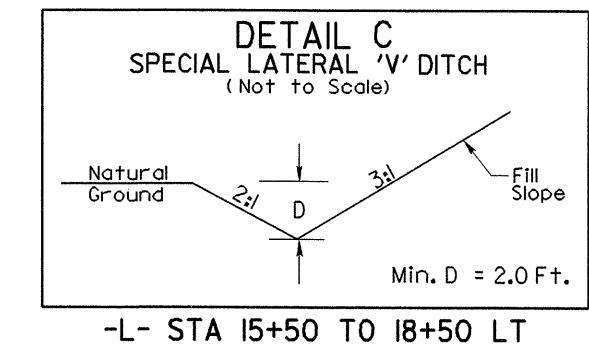


DATUM DESCRIPTION

THE LOCALIZED COORDINATE SYSTEM DEVELOPED FOR THIS PROJECT IS BASED ON THE STATE PLANE COORDINATES ESTABLISHED BY NCDOT FOR MONUMENT "B3884-2" WITH NAD 1983/95 STATE PLANE GRID COORDINATES OF NORTHING: 418514098(11) EASTING: 2439360630(11) THE AVERAGE COMBINED GRID FACTOR USED ON THIS PROJECT (GROUND TO GRID) IS: 0.9998980983 THE N.C. LAMBERT GRID BEARING AND LOCALIZED HORIZONTAL GROUND DISTANCE FROM "B3884-2" TO -L- STATION 9+72.27 IS S 54°34'49.6" E 752.16' ALL LINEAR DIMENSIONS ARE LOCALIZED HORIZONTAL DISTANCES VERTICAL DATUM USED IS NAVD 88



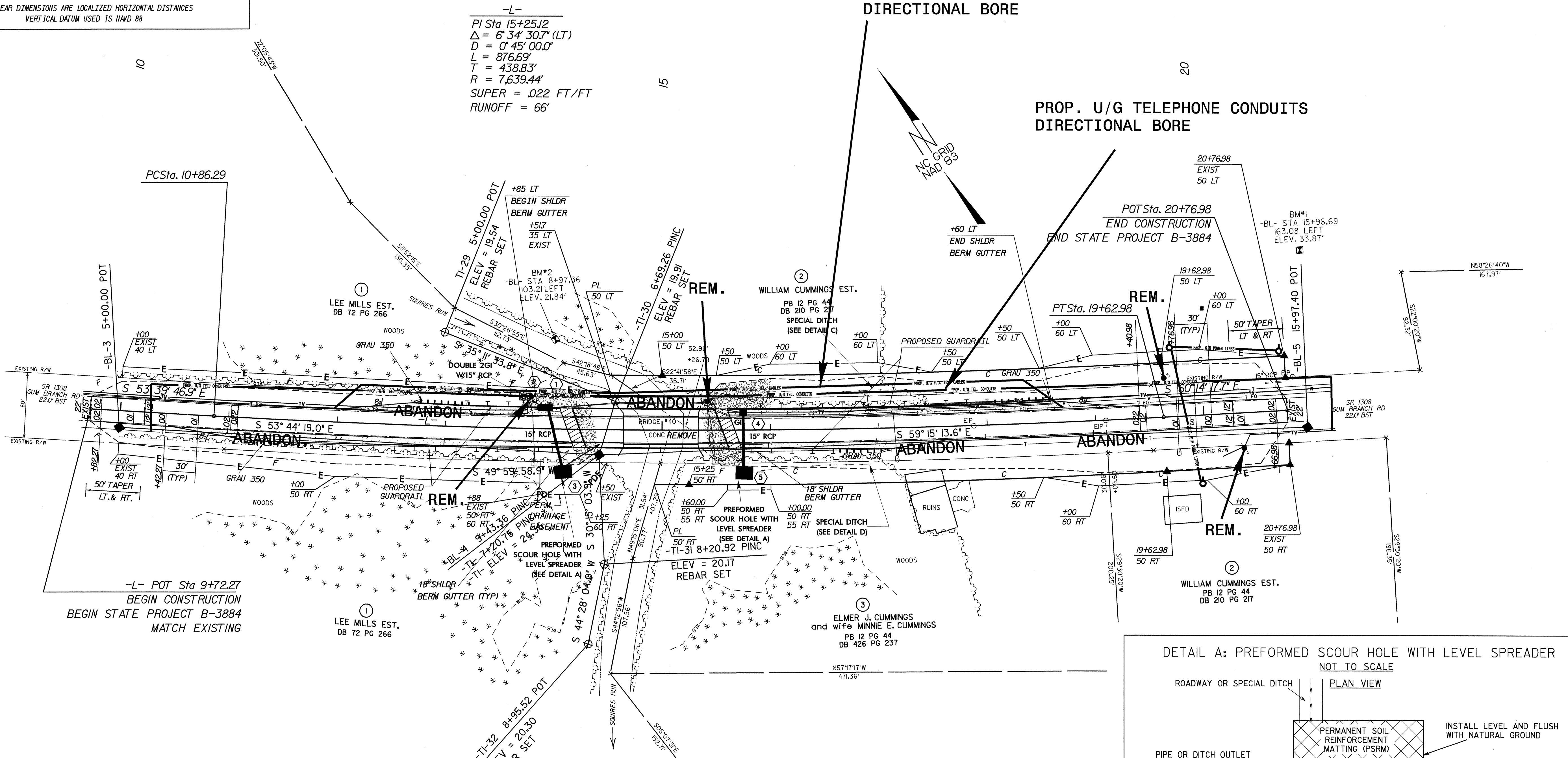
UTILITIES BY OTHERS

NOTE:
ALL PROPOSED UTILITY WORK SHOWN ON THIS SHEET WILL BE DONE BY OTHERS

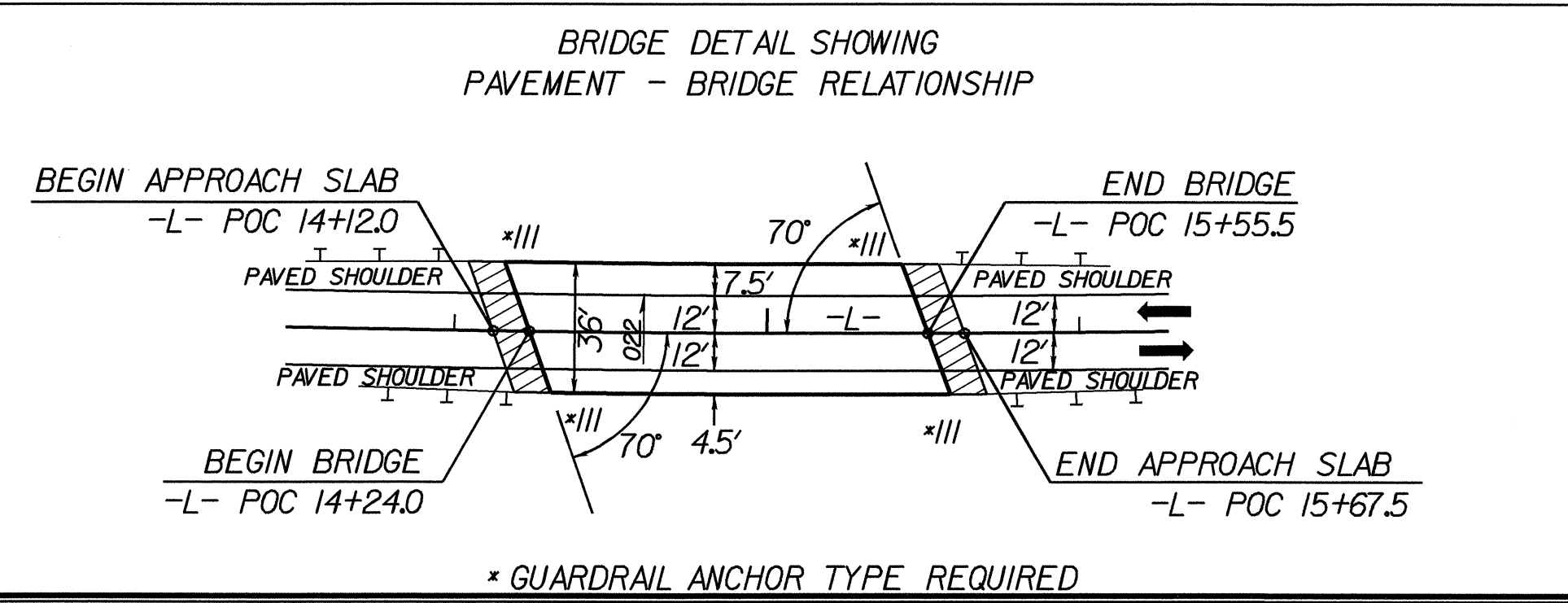
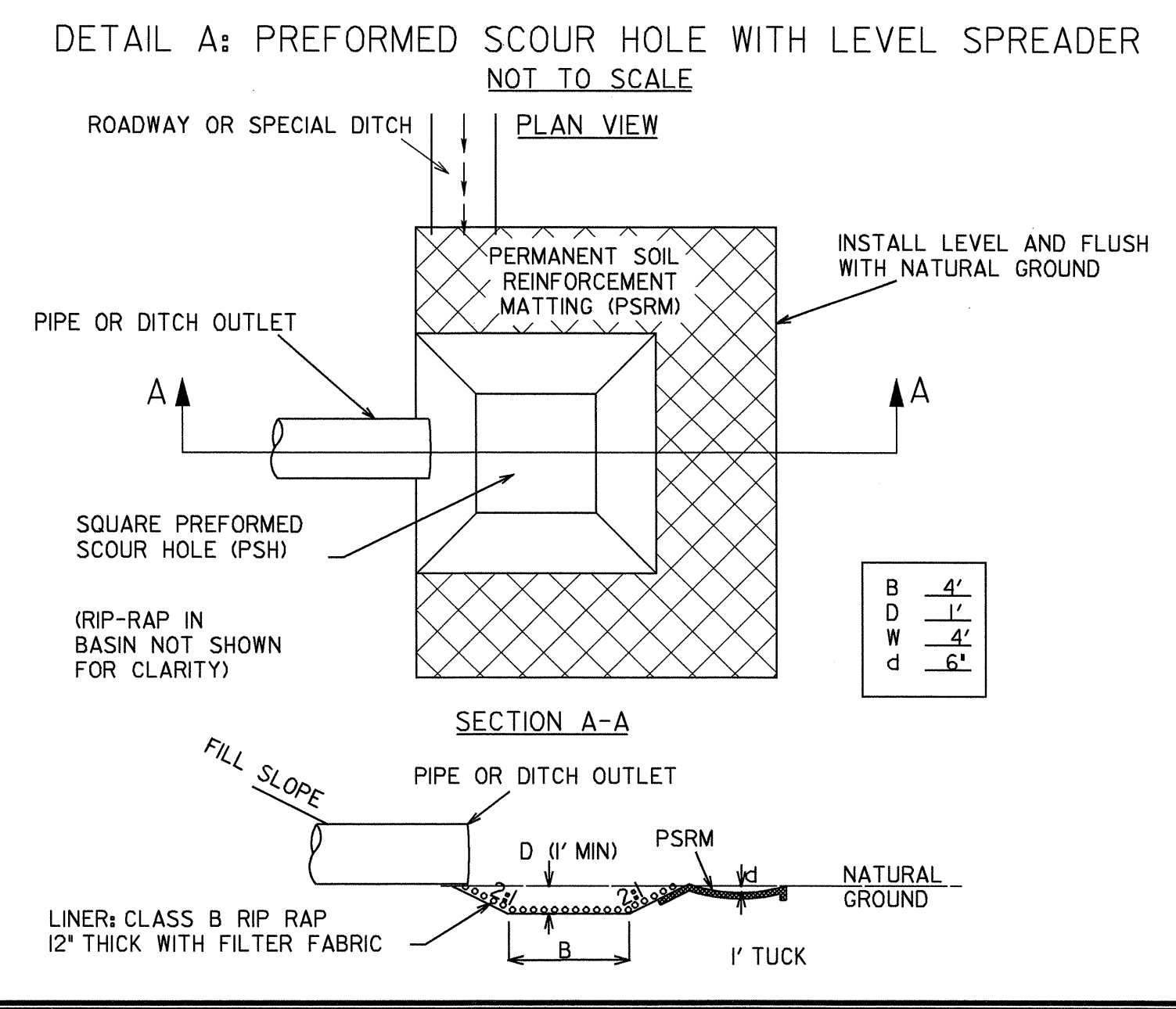
PROP. U/G FIBER OPTIC TELEPHONE CABLES

DIRECTIONAL BORE

PROP. U/G TELEPHONE CONDUITS DIRECTIONAL BORE



-L- POT Sta 9+72.27
BEGIN CONSTRUCTION
BEGIN STATE PROJECT B-3884
MATCH EXISTING



8/17/99
05-MAY-2003 09:09
r:\Utilities\Proj\U0-1\PC\NB3884U01.DGN
r:\Utilities\Proj\U0-1\PC\NB3884U01.DGN
r:\Utilities\Proj\U0-1\PC\NB3884U01.DGN