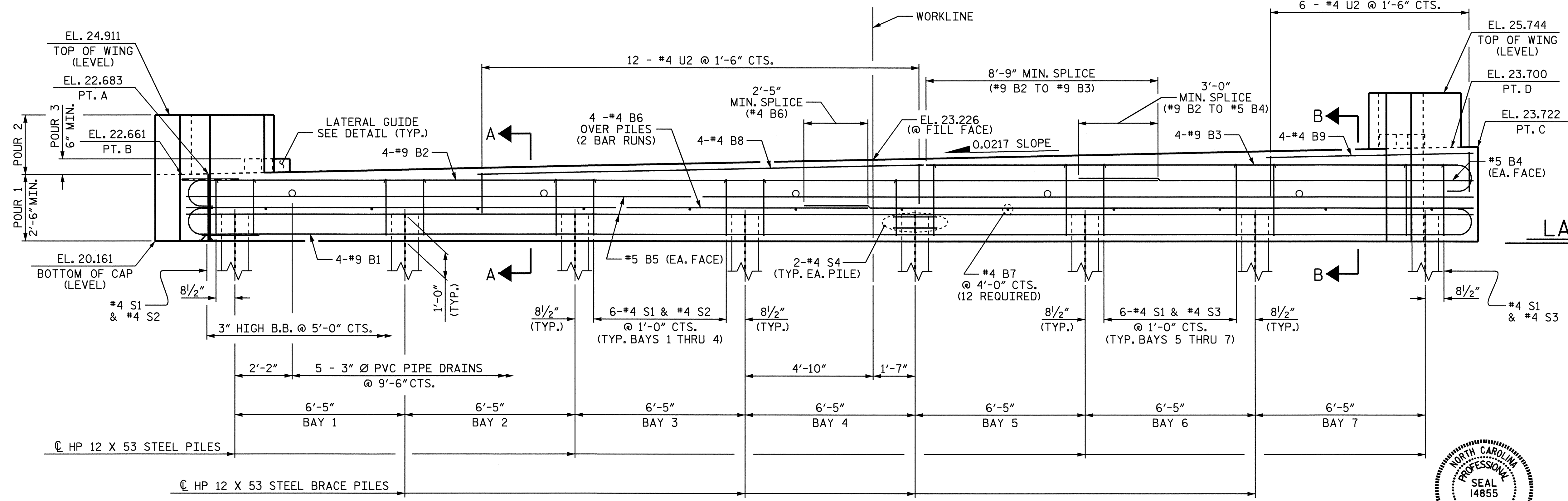
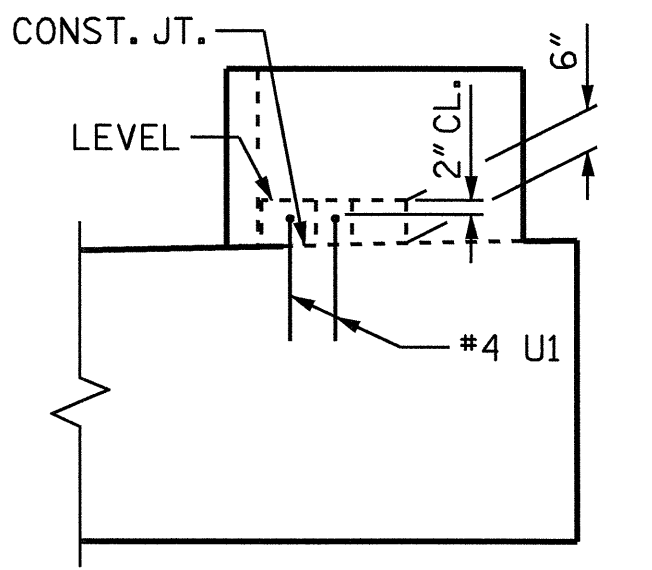
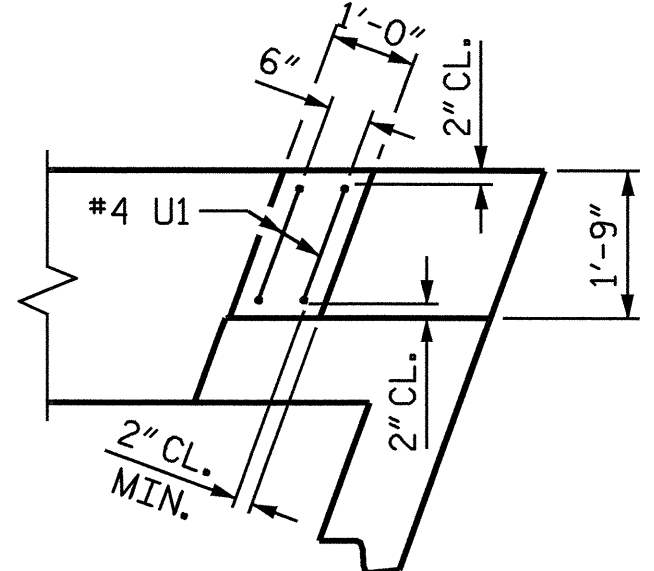


NOTES

STIRRUPS IN CAP MAY BE SHIFTED AS NECESSARY TO CLEAR DOWELS.

PIPE DRAINS MAY BE SHIFTED SLIGHTLY AS NECESSARY TO CLEAR REINFORCING STEEL AND DOWELS.

THE LATERAL GUIDE AT EACH END OF THE CAP IS NOT TO BE POURED UNTIL AFTER CORED SLAB UNITS ARE IN PLACE.



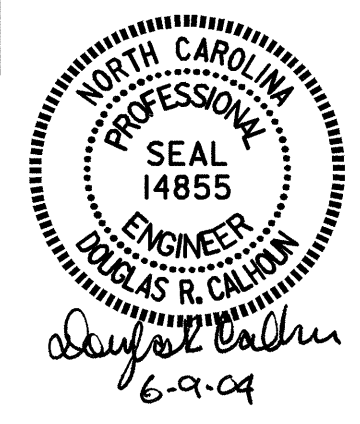
LATERAL GUIDE DETAIL

PROJECT NO. B-3884

ONSLOW COUNTY

STATION: 14+89.75 -L-

SHEET 1 OF 3



STATE OF NORTH CAROLINA		DEPARTMENT OF TRANSPORTATION		RALEIGH	
SUBSTRUCTURE END BENT 1					
REVISIONS					
NO.	BY:	DATE:	NO.	BY:	DATE:
1			3		
2			4		
					SHEET NO. S-10
					TOTAL SHEETS 23

DRAWN BY : T. A. HARRIS DATE : 2/19/03

CHECKED BY : K. MCCAULEY DATE : 3/26/03