

REVISIONS

METRIC

PROJECT REFERENCE NO. U-2734 SHEET NO. 10

R/W SHEET NO.

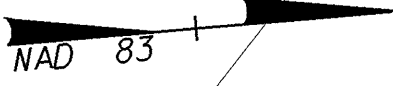
ROADWAY DESIGN ENGINEER HYDRAULICS ENGINEER

INCOMPLETE PLANS DO NOT USE FOR R/W ACQUISITION

PRELIMINARY PLANS DO NOT USE FOR CONSTRUCTION

CONST. REV. _____

R/W REV. _____



LEGEND

- PAVEMENT REMOVAL
- PROPOSED BIKE PATH
- PROPOSED 125mm CONCRETE MONOLITHIC ISLAND (SURFACE MOUNTED)

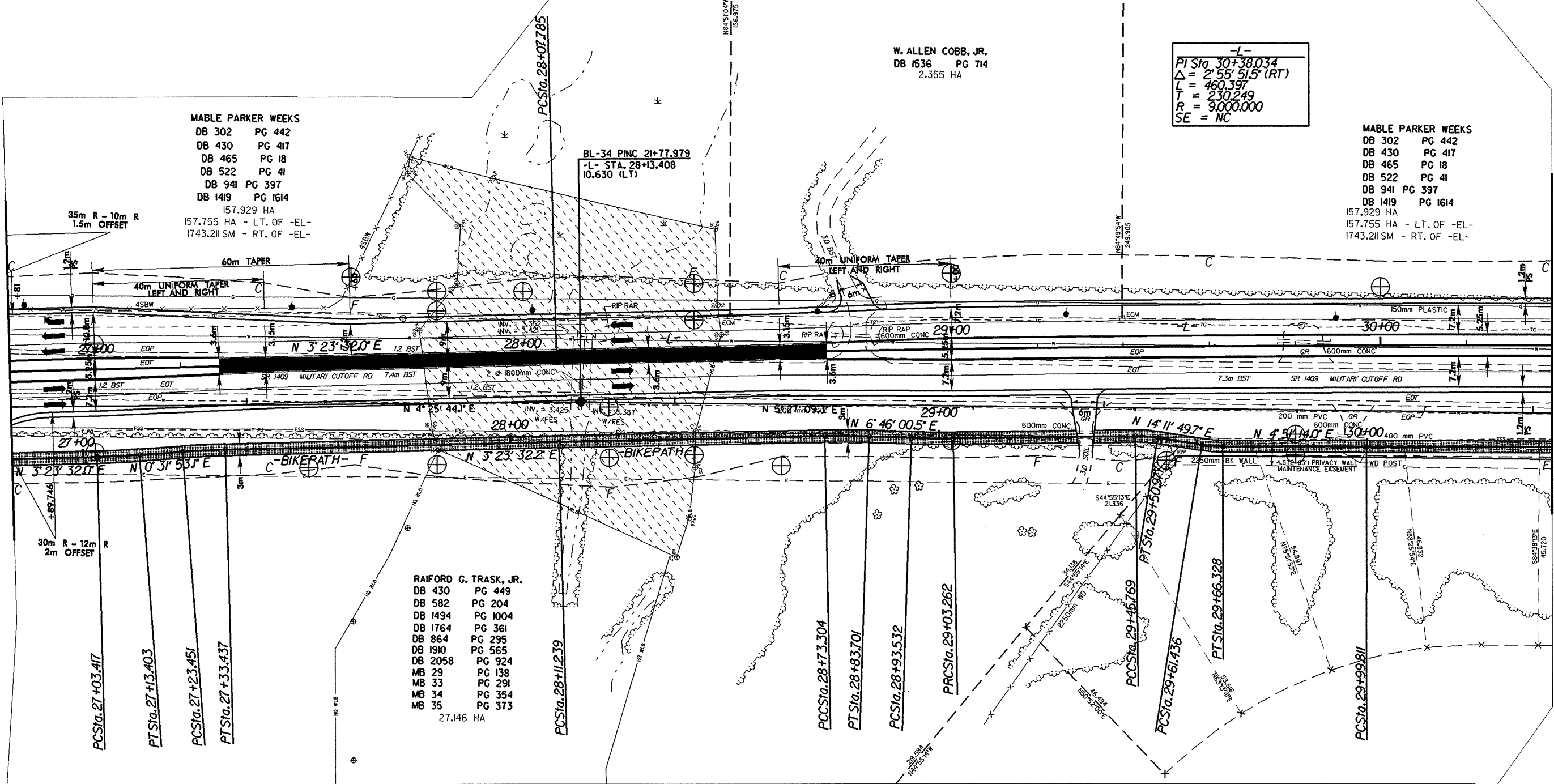
W. ALLEN COBB, JR.
DB 1536 PG 714
2.355 HA

-L-
PI Sta 30+38.034
Δ = 2°55'51.5" (RT)
L = 460.397
T = 230.249
R = 9,000.000
SE = NC

MABLE PARKER WEEKS
DB 302 PG 442
DB 430 PG 417
DB 465 PG 18
DB 522 PG 41
DB 941 PG 397
DB 1419 PG 1614
157.929 HA
157.755 HA - LT. OF -EL-
1743.211 SM - RT. OF -EL-

MABLE PARKER WEEKS
DB 302 PG 442
DB 430 PG 417
DB 465 PG 18
DB 522 PG 41
DB 941 PG 397
DB 1419 PG 1614
157.929 HA
157.755 HA - LT. OF -EL-
1743.211 SM - RT. OF -EL-

BL-34 PINC 21+77.979
-L- STA. 28+13.408
10.630 (LT)



RAIFORD G. TRASK, JR.
DB 430 PG 449
DB 582 PG 204
DB 1494 PG 1004
DB 1764 PG 361
DB 864 PG 295
DB 1910 PG 565
DB 2058 PG 924
MB 29 PG 138
MB 33 PG 291
MB 34 PG 354
MB 35 PG 373
27.146 HA

-BIKEPATH-								
PI Sta 27+08.411	PI Sta 27+28.445	PI Sta 28+42.272	PI Sta 28+78.503	PI Sta 28+98.398	PI Sta 29+24.515	PI Sta 29+48.379	PI Sta 29+63.887	PI Sta 31+32.724
Δ = 2°51'38.9" (LT)	Δ = 2°51'39.1" (RT)	Δ = 0°23'45.6" (RT)	Δ = 2°58'42.8" (RT)	Δ = 2°47'15.1" (LT)	Δ = 0°16'16.5" (RT)	Δ = 9°56'47.8" (RT)	Δ = 9°20'35.6" (LT)	Δ = 0°48'05.8" (RT)
L = 9.986	L = 9.986	L = 62.064	L = 10.397	L = 9.730	L = 42.507	L = 5.208	L = 4.892	L = 265.822
T = 4.994	T = 4.994	T = 31.032	T = 5.200	T = 4.866	T = 21.253	T = 2.611	T = 2.451	T = 132.913
R = 200.000	R = 200.000	R = 8,980.000	R = 200.000	R = 200.000	R = 8,979.000	R = 30.000	R = 30.000	R = 19,000.000

*****S:\S\2009\200906*****