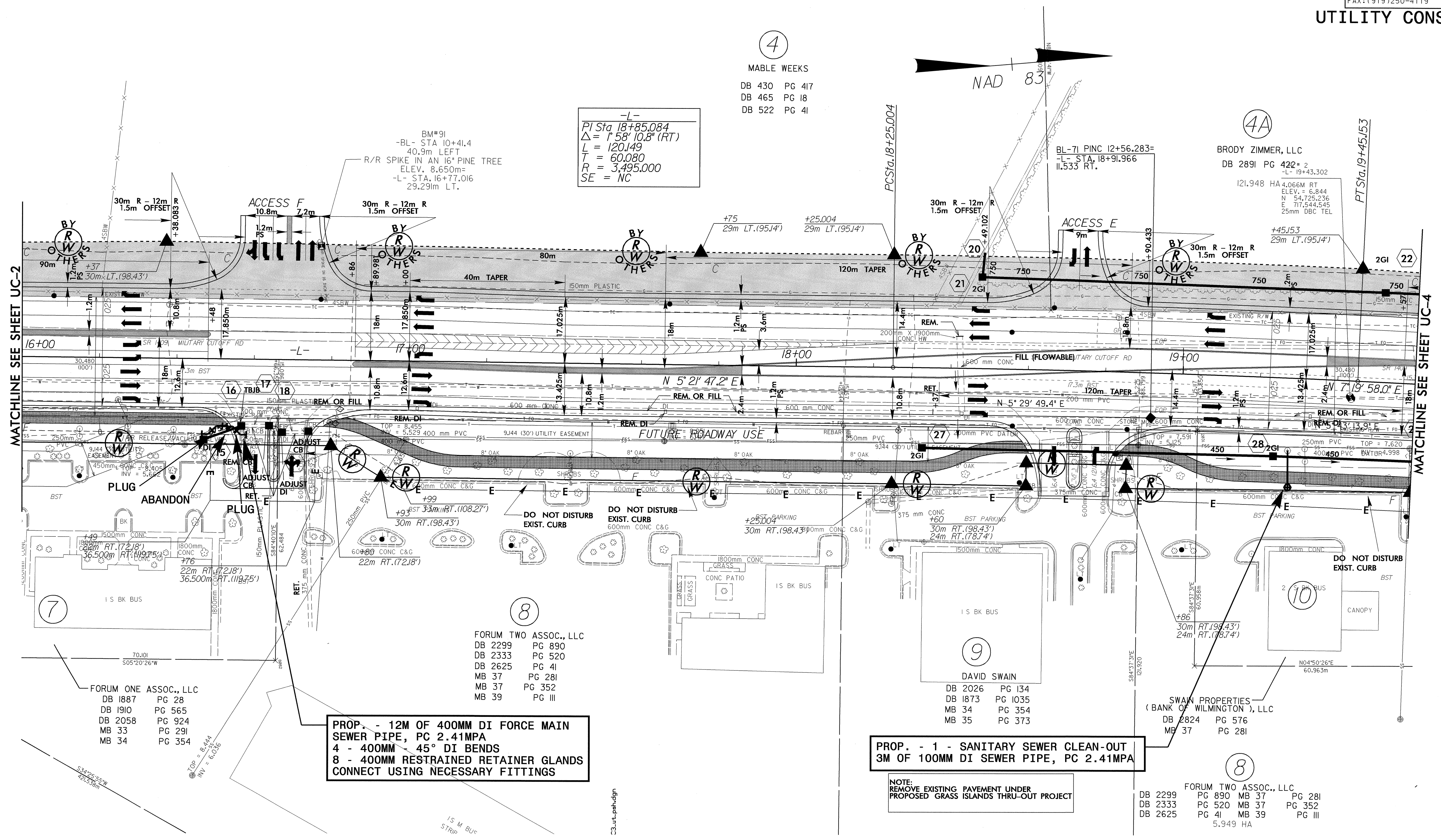
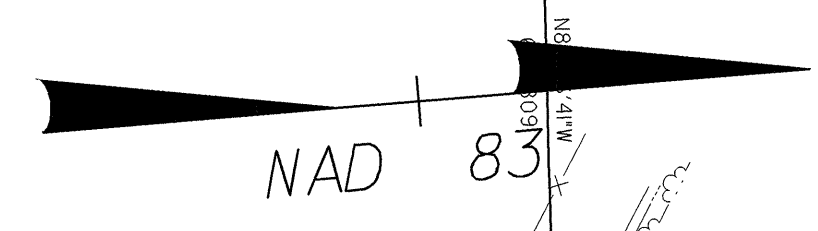


UTILITY CONSTRUCTION

④  
 MABLE WEEKS  
 DB 430 PG 417  
 DB 465 PG 18  
 DB 522 PG 41

-L-  
 PI Sta 18+85.084  
 $\Delta = 1^{\circ} 58' 10.8''$  (RT)  
 L = 120.149  
 T = 60.080  
 R = 3,495.000  
 SE = NC



MATCHLINE SEE SHEET UC-2

MATCHLINE SEE SHEET UC-4

PROP. - 12M OF 400MM DI FORCE MAIN  
 SEWER PIPE, PC 2.41MPA  
 4 - 400MM 45° DI BENDS  
 8 - 400MM RESTRAINED RETAINER GLANDS  
 CONNECT USING NECESSARY FITTINGS

PROP. - 1 - SANITARY SEWER CLEAN-OUT  
 3M OF 100MM DI SEWER PIPE, PC 2.41MPA

NOTE:  
 REMOVE EXISTING PAVEMENT UNDER  
 PROPOSED GRASS ISLANDS THRU-OUT PROJECT

FORUM ONE ASSOC., LLC  
 DB 1887 PG 28  
 DB 1910 PG 565  
 DB 2058 PG 924  
 MB 33 PG 291  
 MB 34 PG 354

FORUM TWO ASSOC., LLC  
 DB 2299 PG 890  
 DB 2333 PG 520  
 DB 2625 PG 41  
 MB 37 PG 281  
 MB 37 PG 352  
 MB 39 PG III

DAVID SWAIN  
 DB 2026 PG 134  
 DB 1873 PG 1035  
 MB 34 PG 354  
 MB 35 PG 373

SWAIN PROPERTIES  
 (BANK OF WILMINGTON), LLC  
 DB 2824 PG 576  
 MB 37 PG 281

FORUM TWO ASSOC., LLC  
 DB 2299 PG 890 MB 37 PG 281  
 DB 2333 PG 520 MB 37 PG 352  
 DB 2625 PG 41 MB 39 PG III  
 5.949 HA

042592  
 19-NOV-2003 09:00  
 R:\UTL\2734\UC3\UC3.ut.pah.dgn  
 mpr\right\ATP\1852124