

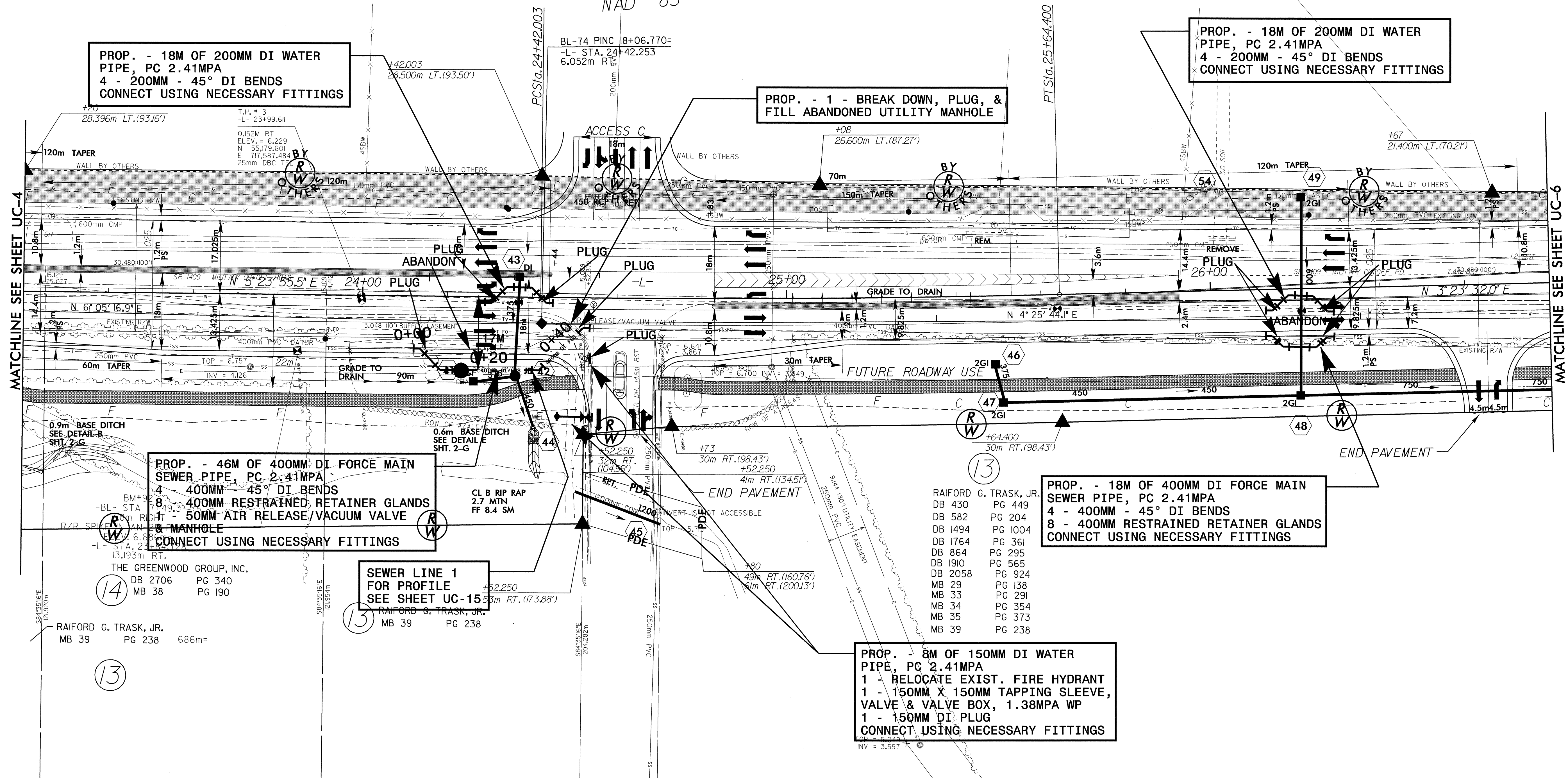
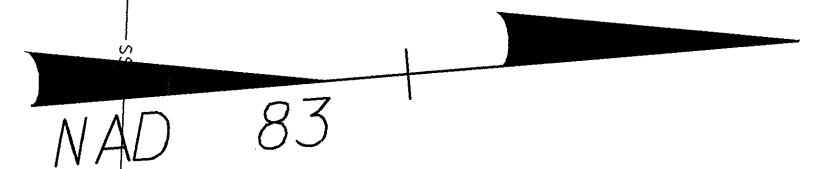
| | |
|---|-----------|
| PROJECT REFERENCE NO. | SHEET NO. |
| U-2734 | UC-5 |
| DESIGNED BY: MRB | |
| DRAWN BY: MRB | |
| CHECKED BY: RBW | |
| APPROVED BY: RBW | |
| REVISED: | |
| NORTH CAROLINA DEPARTMENT OF TRANSPORTATION DESIGN SERVICES UNIT PHONE: (919) 250-4128 FAX: (919) 250-4119 | |

UTILITY CONSTRUCTION

4A
 BRODY ZIMMER, LLC
 DB 2891 PG 422

-L-
 PI Sta 25+03.208
 $\Delta = 2'00'' 23.5'' (LT)$
 $L = 122.397$
 $T = 61.205$
 $R = 3,495.000$
 $SE = NC$

NOTE:
 REMOVE EXISTING PAVEMENT UNDER
 PROPOSED GRASS ISLANDS THRU-OUT PROJECT



PROP. - 18M OF 200MM DI WATER PIPE, PC 2.41MPA
 4 - 200MM - 45° DI BENDS
 CONNECT USING NECESSARY FITTINGS

PROP. - 1 - BREAK DOWN, PLUG, & FILL ABANDONED UTILITY MANHOLE

PROP. - 18M OF 200MM DI WATER PIPE, PC 2.41MPA
 4 - 200MM - 45° DI BENDS
 CONNECT USING NECESSARY FITTINGS

PROP. - 46M OF 400MM DI FORCE MAIN SEWER PIPE, PC 2.41MPA
 4 - 400MM - 45° DI BENDS
 8 - 400MM RESTRAINED RETAINER GLANDS
 50MM AIR RELEASE/VACUUM VALVE & MANHOLE
 CONNECT USING NECESSARY FITTINGS

SEWER LINE 1 FOR PROFILE SEE SHEET UC-15

PROP. - 18M OF 400MM DI FORCE MAIN SEWER PIPE, PC 2.41MPA
 4 - 400MM - 45° DI BENDS
 8 - 400MM RESTRAINED RETAINER GLANDS
 CONNECT USING NECESSARY FITTINGS

PROP. - 8M OF 150MM DI WATER PIPE, PC 2.41MPA
 1 - RELOCATE EXIST. FIRE HYDRANT
 1 - 150MM X 150MM TAPPING SLEEVE, VALVE & VALVE BOX, 1.38MPA WP
 1 - 150MM DI PLUG
 CONNECT USING NECESSARY FITTINGS

| | | |
|-----------------------|---------|---------|
| RAIFORD G. TRASK, JR. | DB 430 | PG 449 |
| | DB 582 | PG 204 |
| | DB 1494 | PG 1004 |
| | DB 1764 | PG 361 |
| | DB 864 | PG 295 |
| | DB 1910 | PG 565 |
| | DB 2058 | PG 924 |
| | MB 29 | PG 138 |
| | MB 33 | PG 291 |
| | MB 34 | PG 354 |
| | MB 35 | PG 373 |
| | MB 39 | PG 238 |

042587
 RAIFORD G. TRASK, JR. 08/20
 11/15/15 NOV 16 08:50
 U-2734-7 UC-5 ut_psh.dgn
 148 1052 1242