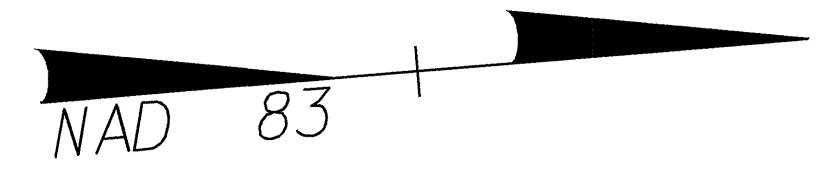


NOTE: REMOVE EXISTING PAVEMENT UNDER PROPOSED GRASS ISLANDS THRU-OUT PROJECT



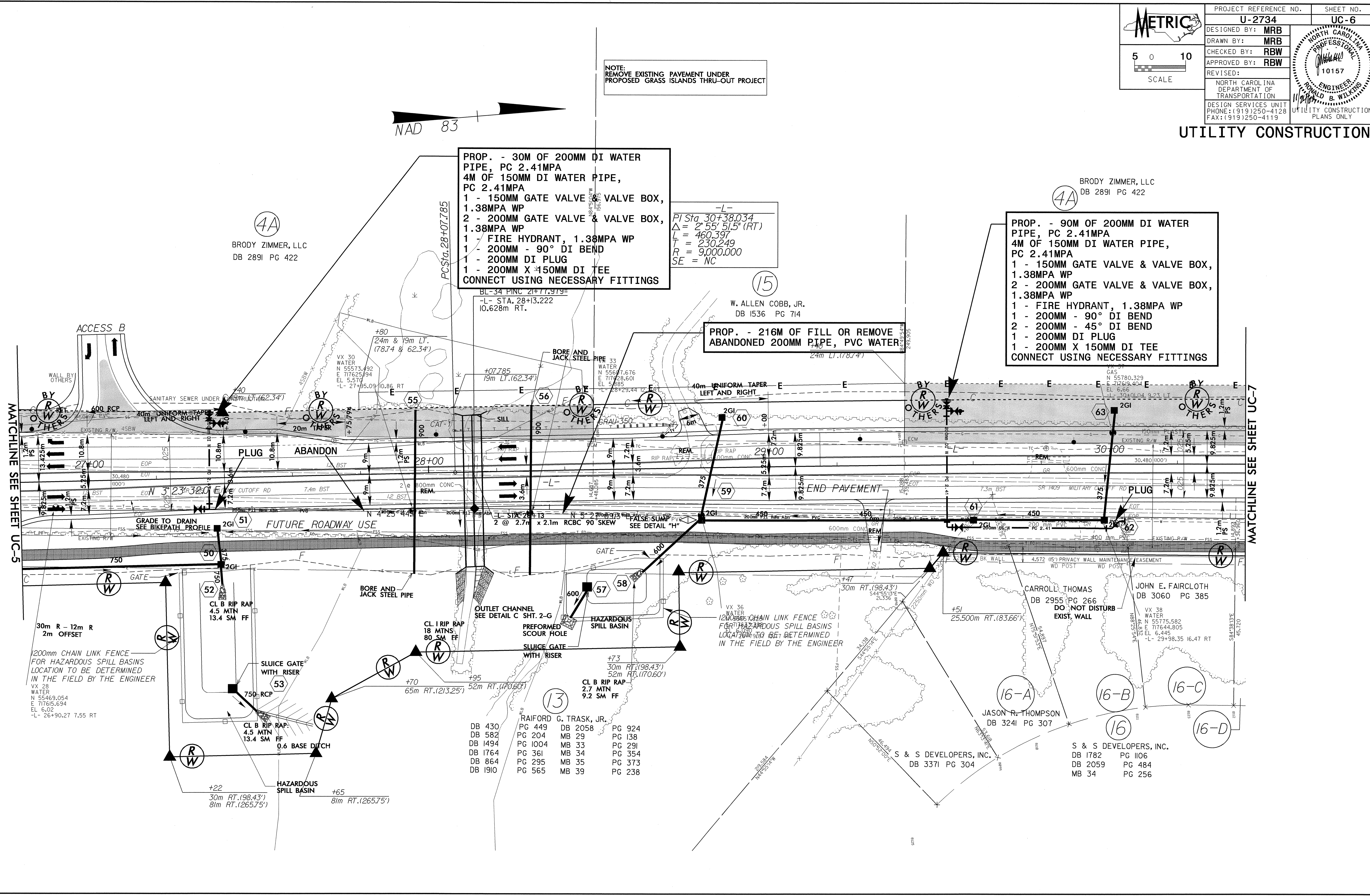
4A
 BRODY ZIMMER, LLC
 DB 2891 PG 422

PROP. - 30M OF 200MM DI WATER PIPE, PC 2.41MPA
 4M OF 150MM DI WATER PIPE, PC 2.41MPA
 1 - 150MM GATE VALVE & VALVE BOX, 1.38MPA WP
 2 - 200MM GATE VALVE & VALVE BOX, 1.38MPA WP
 1 - FIRE HYDRANT, 1.38MPA WP
 1 - 200MM - 90° DI BEND
 1 - 200MM DI PLUG
 1 - 200MM X 150MM DI TEE
 CONNECT USING NECESSARY FITTINGS

15
 PI Sta. 30+38.034
 $\Delta = 2' 55" 51.5' (RT)$
 $L = 460.397$
 $T = 230.249$
 $R = 9,000.000$
 $SE = NC$

15
 W. ALLEN COBB, JR.
 DB 1536 PG 714

4A
 PROP. - 90M OF 200MM DI WATER PIPE, PC 2.41MPA
 4M OF 150MM DI WATER PIPE, PC 2.41MPA
 1 - 150MM GATE VALVE & VALVE BOX, 1.38MPA WP
 2 - 200MM GATE VALVE & VALVE BOX, 1.38MPA WP
 1 - FIRE HYDRANT, 1.38MPA WP
 1 - 200MM - 90° DI BEND
 2 - 200MM - 45° DI BEND
 1 - 200MM DI PLUG
 1 - 200MM X 150MM DI TEE
 CONNECT USING NECESSARY FITTINGS



RAIFORD G. TRASK, JR.
 DB 430 PG 449 DB 2058 PG 924
 DB 582 PG 204 MB 29 PG 138
 DB 1494 PG 1004 MB 33 PG 291
 DB 1764 PG 361 MB 34 PG 354
 DB 864 PG 295 MB 35 PG 373
 DB 1910 PG 565 MB 39 PG 238

JASON R. THOMPSON
 DB 3241 PG 307

S & S DEVELOPERS, INC.
 DB 1782 PG 1106
 DB 2059 PG 484
 MB 34 PG 256

042557
 11/20/2003 09:00
 R:\UTL\2734\UC-6\UC-6.dwg
 11/20/2003 09:00
 R:\UTL\2734\UC-6\UC-6.dwg