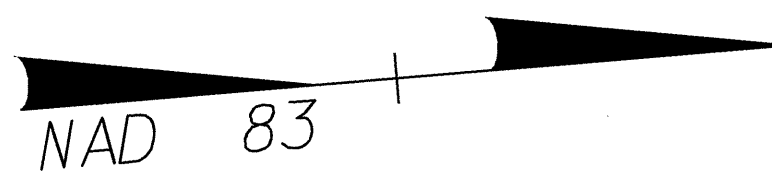


04257

BRODY ZIMMER, LLC
DB 2891 PG 422

4A

-L-	
PI Sta. 30+38.034	PI Sta. 35+26.422
$\Delta = 2^{\circ} 55' 51.5" (RT)$	$\Delta = 5^{\circ} 18' 10.7" (LT)$
L = 460.397	L = 323.478
T = 230.249	T = 161.854
R = 9,000.000	R = 3,495.000
SE = NC	SE = NC



	PROJECT REFERENCE NO.	SHEET NO.
	U-2734	UC-7
	DESIGNED BY: MRB	
	DRAWN BY: MRB	
	CHECKED BY: RBW	
	APPROVED BY: RBW	
NORTH CAROLINA DEPARTMENT OF TRANSPORTATION DESIGN SERVICES UNIT PHONE: (919) 250-4128 FAX: (919) 250-4119		UTILITY CONSTRUCTION PLANS ONLY

UTILITY CONSTRUCTION

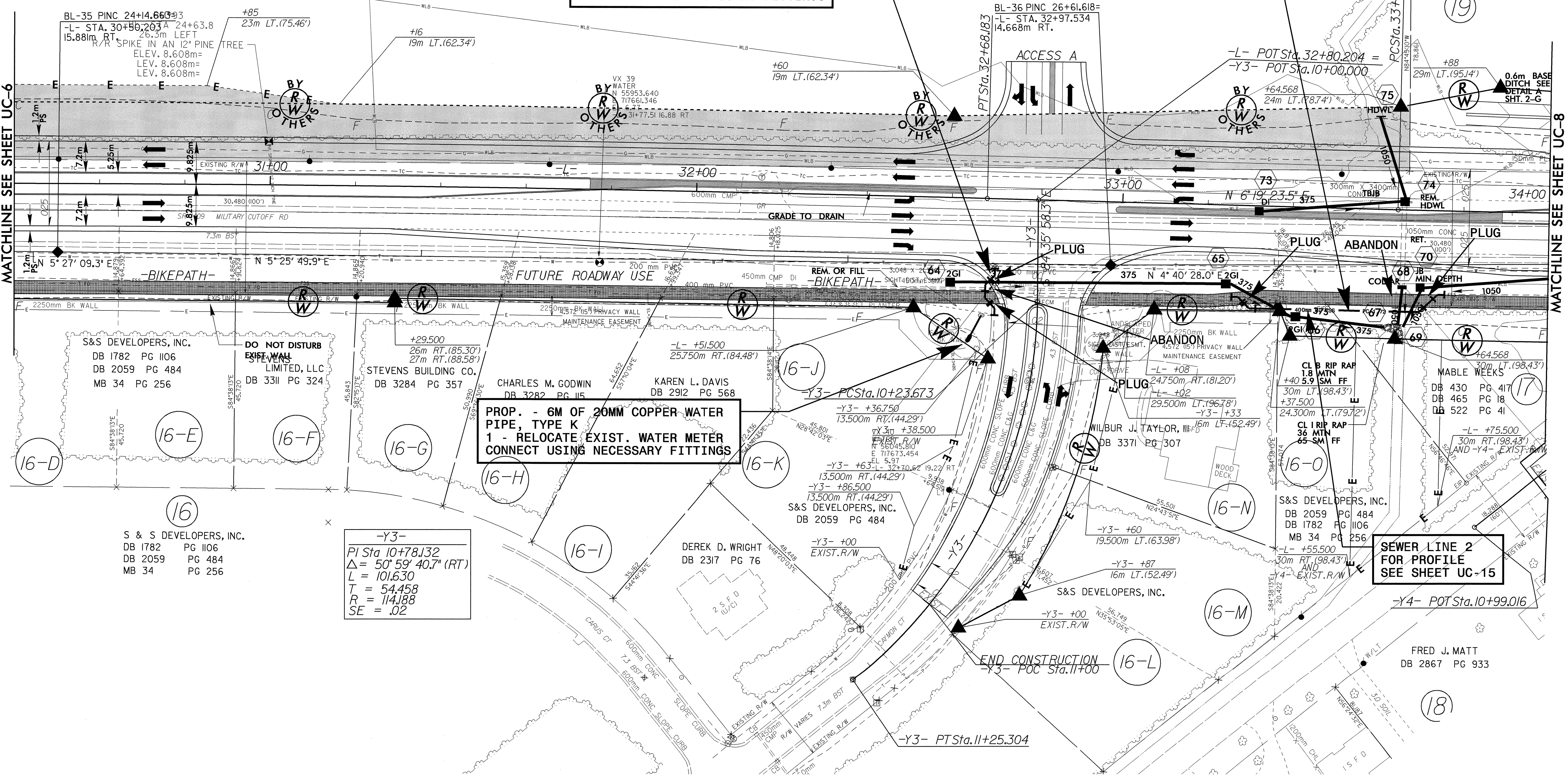
NOTE:
REMOVE EXISTING PAVEMENT UNDER PROPOSED GRASS ISLANDS THRU-OUT PROJECT

PROP. - 14M OF 200MM DI WATER PIPE, PC 2.41MPA
4 - 200MM - 45° DI BENDS
CONNECT USING NECESSARY FITTINGS

PROP. - 52M OF 400MM DI FORCE MAIN SEWER PIPE, PC 2.41MPA
4 - 400MM - 45° DI BENDS
8 - 400MM RESTRAINED RETAINER GLANDS
CONNECT USING NECESSARY FITTINGS

PROP. - 6M OF 20MM COPPER WATER PIPE, TYPE K
1 - RELOCATE EXIST. WATER METER
CONNECT USING NECESSARY FITTINGS

SEWER LINE 2 FOR PROFILE SEE SHEET UC-15



MATCHLINE SEE SHEET UC-6

MATCHLINE SEE SHEET UC-8

S & S DEVELOPERS, INC.
DB 1782 PG 1106
DB 2059 PG 484
MB 34 PG 256

-Y3-	
PI Sta. 10+78.132	
$\Delta = 50^{\circ} 59' 40.7" (RT)$	
L = 101.630	
T = 54.458	
R = 114.188	
SE = .02	

DEREK D. WRIGHT
DB 2317 PG 76

S&S DEVELOPERS, INC.
DB 2059 PG 484
DB 1782 PG 1106
MB 34 PG 256

FRED J. MATT
DB 2867 PG 933

19-NOV-2003 09:00
 R:\1111\2734\UC7\UC7.dwg
 R:\1111\2734\UC7\UC7.dgn