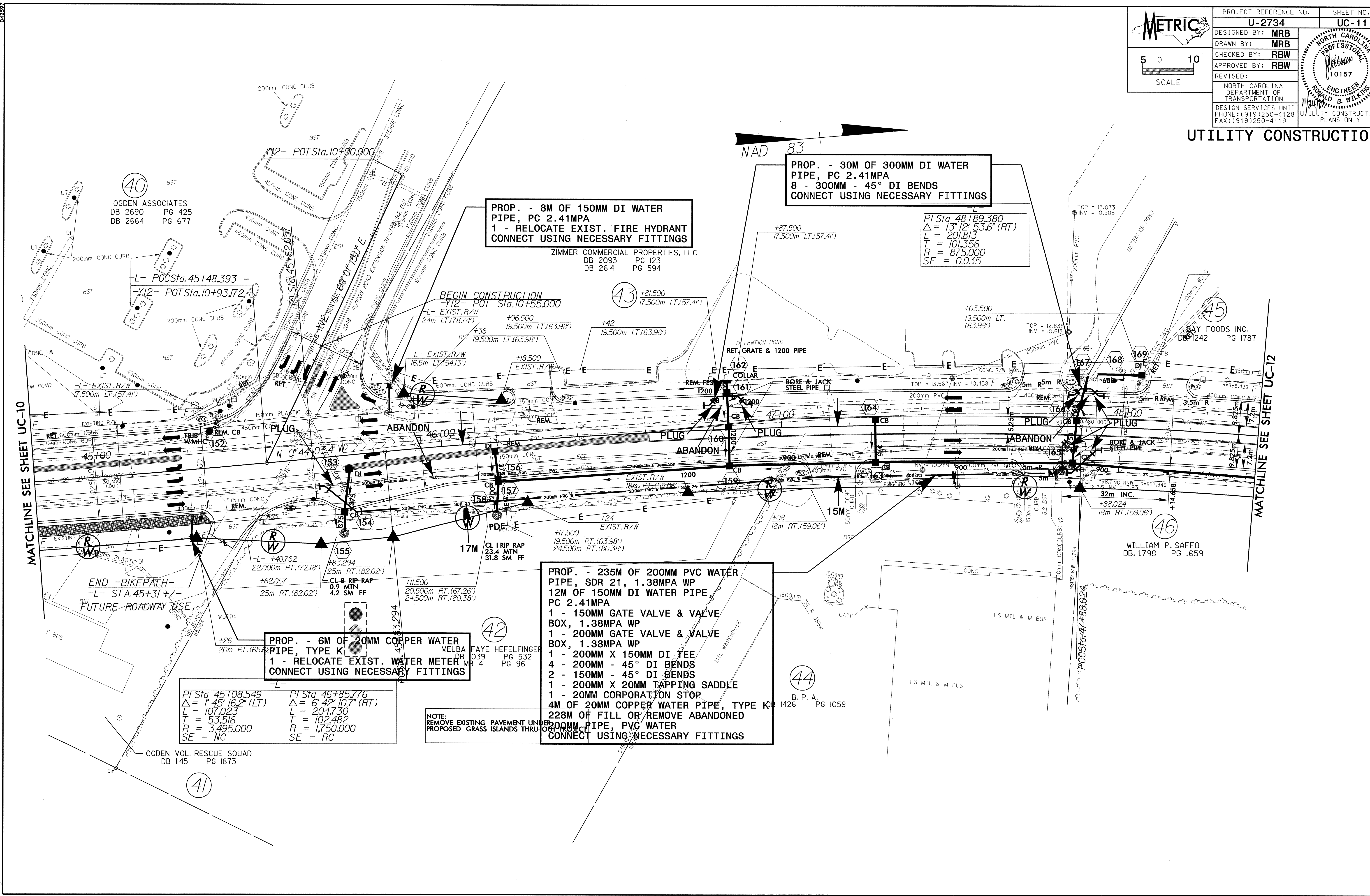


PROJECT REFERENCE NO.	SHEET NO.
U-2734	UC-11
DESIGNED BY: MRB	
DRAWN BY: MRB	
CHECKED BY: RBW	
APPROVED BY: RBW	
REVISID:	
NORTH CAROLINA DEPARTMENT OF TRANSPORTATION DESIGN SERVICES UNIT PHONE: (919) 250-4128 FAX: (919) 250-4119	
UTILITY CONSTRUCTION PLANS ONLY	

UTILITY CONSTRUCTION



OGDEN ASSOCIATES
 DB 2690 PG 425
 DB 2664 PG 677

PROP. - 8M OF 150MM DI WATER PIPE, PC 2.41MPA
 1 - RELOCATE EXIST. FIRE HYDRANT
 CONNECT USING NECESSARY FITTINGS

ZIMMER COMMERCIAL PROPERTIES, LLC
 DB 2093 PG 123
 DB 2614 PG 594

PI Sta 48+89.380
 $\Delta = 13^\circ 12' 53.6''$ (RT)
 $L = 201.813$
 $T = 101.356$
 $R = 875.000$
 $SE = 0.035$

PROP. - 235M OF 200MM PVC WATER PIPE, SDR 21, 1.38MPA WP
12M OF 150MM DI WATER PIPE, PC 2.41MPA
 1 - 150MM GATE VALVE & VALVE BOX, 1.38MPA WP
 1 - 200MM GATE VALVE & VALVE BOX, 1.38MPA WP
 1 - 200MM X 150MM DI TEE
 4 - 200MM - 45° DI BENDS
 2 - 150MM - 45° DI BENDS
 1 - 200MM X 20MM TAPPING SADDLE
 1 - 20MM CORPORATION STOP
4M OF 20MM COPPER WATER PIPE, TYPE K1
228M OF 200MM DI WATER PIPE, PVC WATER PIPE, PVC WATER PIPE
 CONNECT USING NECESSARY FITTINGS

PROP. - 6M OF 20MM COPPER WATER PIPE, TYPE K1
 1 - RELOCATE EXIST. WATER METER
 CONNECT USING NECESSARY FITTINGS

MELBA FAYE HEFELFINGER
 DB 039 PG 532
 MB 4 PG 96

PI Sta 45+08.549
 $\Delta = 1^\circ 45' 16.2''$ (LT)
 $L = 107.023$
 $T = 53.516$
 $R = 3,495.000$
 $SE = NC$

PI Sta 46+85.776
 $\Delta = 6^\circ 42' 10.7''$ (RT)
 $L = 204.730$
 $T = 102.482$
 $R = 1,750.000$
 $SE = RC$

NOTE:
 REMOVE EXISTING PAVEMENT UNDER PROPOSED GRASS ISLANDS THROUGHOUT PROJECT

MATCHLINE SEE SHEET UC-10

MATCHLINE SEE SHEET UC-12

R:\NOV 2003\0902\U-2734-13_UC11.dwg
 mbr:rbw
 11/12/03