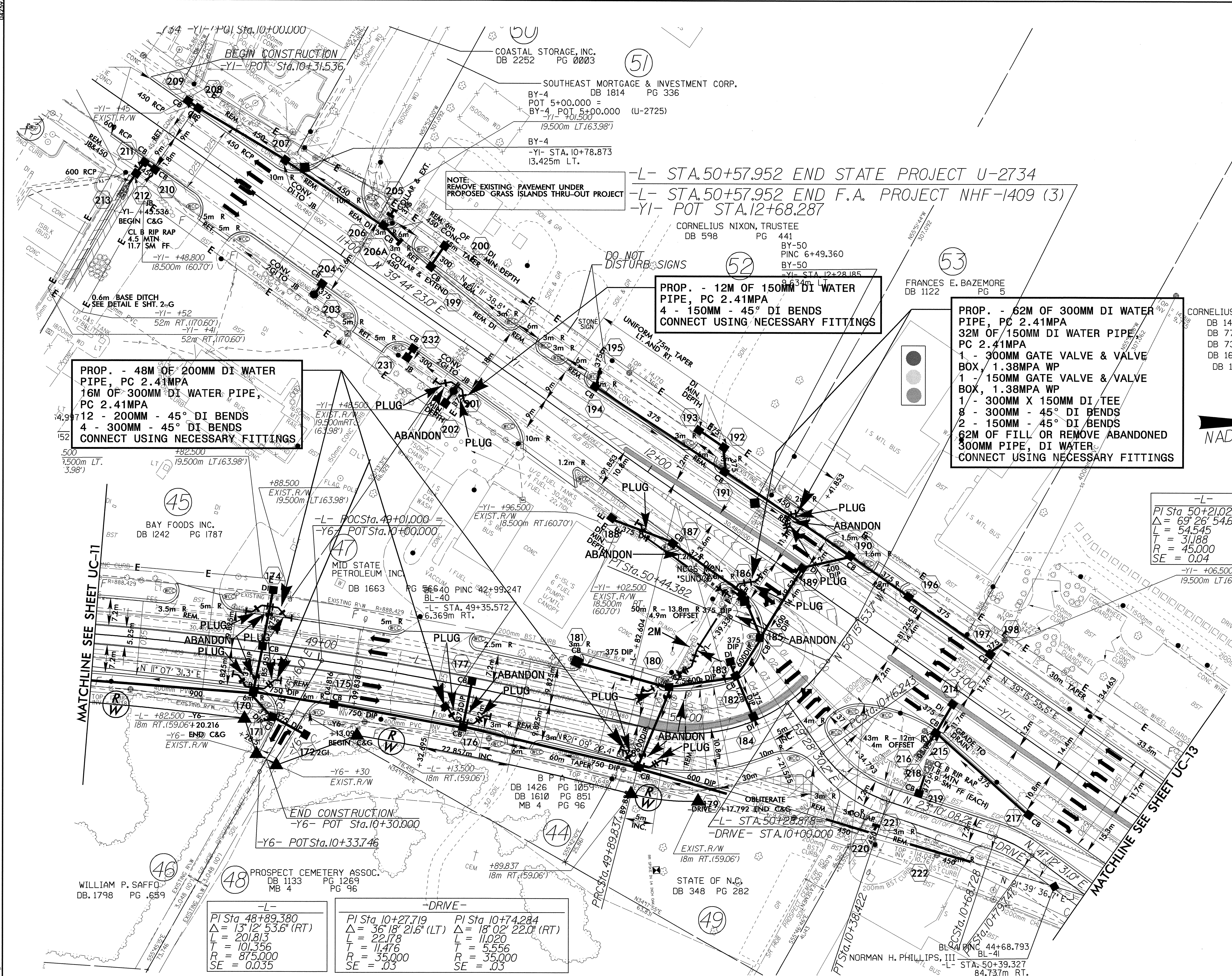


UTILITY CONSTRUCTION



PROP. - 48M OF 200MM DI WATER PIPE, PC 2.41MPA
 16M OF 300MM DI WATER PIPE, PC 2.41MPA
 12 - 200MM - 45° DI BENDS
 4 - 300MM - 45° DI BENDS
 CONNECT USING NECESSARY FITTINGS

-L- STA.50+57.952 END STATE PROJECT U-2734
 -L- STA.50+57.952 END F.A. PROJECT NHF-1409 (3)
 -YI- POT STA.12+68.287

PROP. - 12M OF 150MM DI WATER PIPE, PC 2.41MPA
 4 - 150MM - 45° DI BENDS
 CONNECT USING NECESSARY FITTINGS

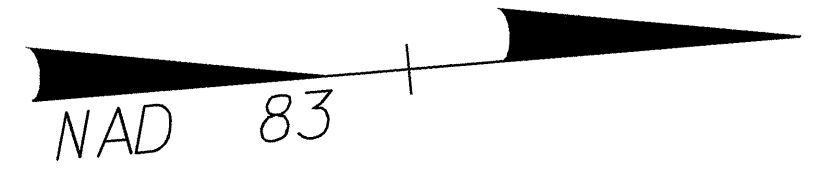
PROP. - 62M OF 300MM DI WATER PIPE, PC 2.41MPA
 32M OF 150MM DI WATER PIPE, PC 2.41MPA
 1 - 300MM GATE VALVE & VALVE BOX, 1.38MPA WP
 1 - 150MM GATE VALVE & VALVE BOX, 1.38MPA WP
 1 - 300MM X 150MM DI TEE
 8 - 300MM - 45° DI BENDS
 2 - 150MM - 45° DI BENDS
 62M OF FILL OR REMOVE ABANDONED 300MM PIPE, DI WATER
 CONNECT USING NECESSARY FITTINGS

-L-
 PI Sta 50+21.025
 $\Delta = 69' 26" 54.6" (LT)$
 $L = 54.545$
 $T = 31.188$
 $R = 45.000$
 $SE = 0.04$

-L-
 PI Sta 48+89.380
 $\Delta = 13' 12" 53.6" (RT)$
 $L = 20.813$
 $T = 101.356$
 $R = 875.000$
 $SE = 0.035$

-DRIVE-
 PI Sta 10+27.719
 $\Delta = 36' 18" 21.6" (LT)$
 $L = 22.178$
 $T = 11.476$
 $R = 35.000$
 $SE = .03$

PI Sta 10+74.284
 $\Delta = 18' 02" 22.0" (RT)$
 $L = 11.020$
 $T = 5.556$
 $R = 35.000$
 $SE = .03$



042597
 R:\U\15-10V\2001\0802\15-10V\2001\U-2734_14.LUC12.dwg - psh.dgn
 15-10V-2001-0802-15-10V-2001-14-UC12.dwg