

PROJECT REFERENCE NO.	SHEET NO.
U-2734	UC-13
DESIGNED BY: MRB	
DRAWN BY: MRB	
CHECKED BY: RBW	
APPROVED BY: RBW	
REVISED:	
NORTH CAROLINA DEPARTMENT OF TRANSPORTATION DESIGN SERVICES UNIT PHONE: (919) 250-4128 FAX: (919) 250-4119	
UTILITY CONSTRUCTION PLANS ONLY	

UTILITY CONSTRUCTION

CORNELIUS NIXON, TRUSTEE
 DB 1429 PG 406
 DB 776 PG 233
 DB 738 PG 463
 DB 1648 PG 1194
 DB 1304 PG 52

54

ENOCH CHAPEL MISSIONARY
 BAPTIST CHURCH
 DB 1235 PG 1978

END CONSTRUCTION
 -YI- POT STA. 14+67.260

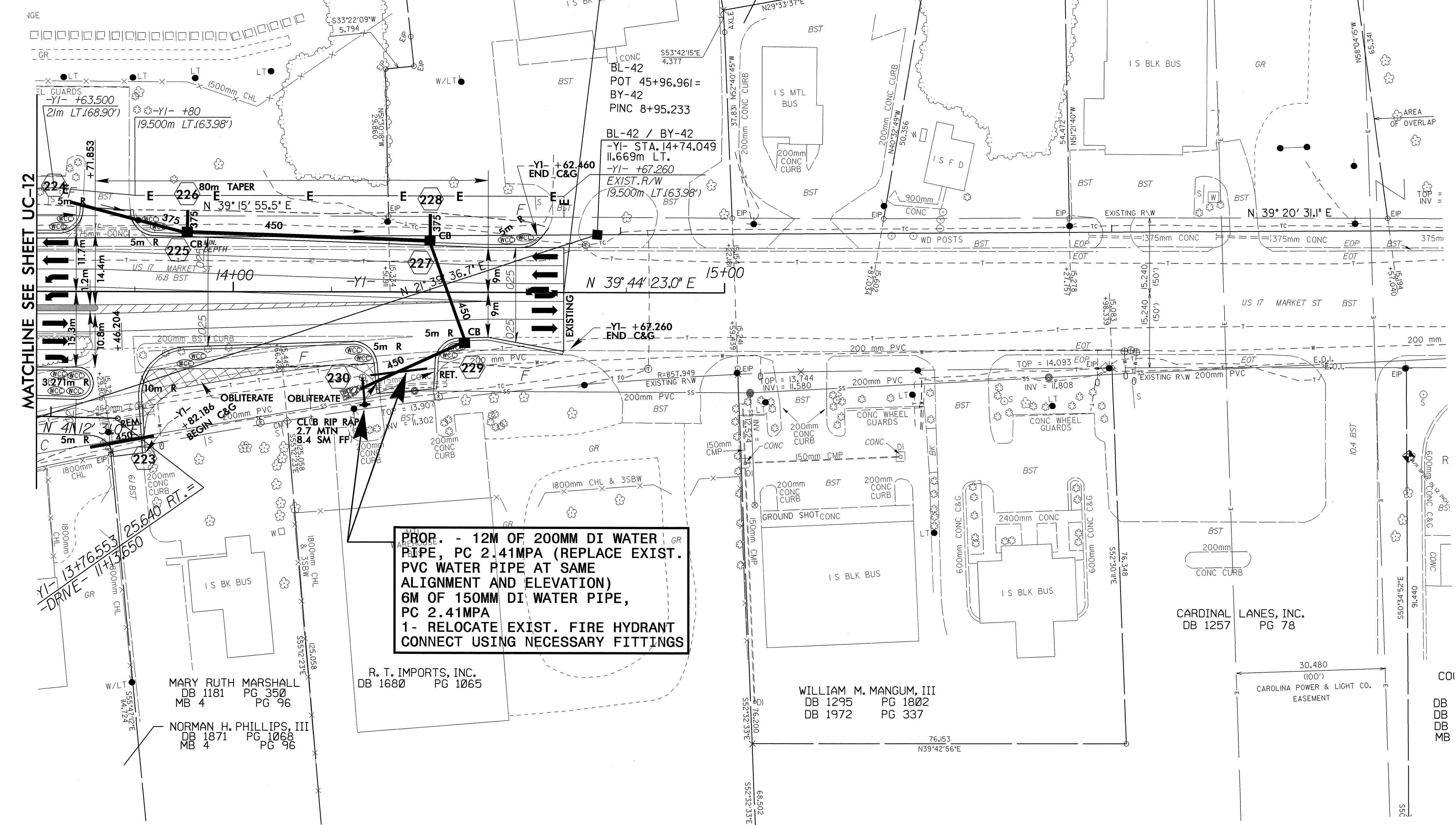
FANNY FRAZIER LIFE ESTATE
 DB 1197 PG 614
 DB 907 PG 176

WICKER WORKS, INC.
 DB 1464 PG 1208

PHILLIP MCINNIS, JR.
 DB 1838 PG 464
 MB 34 PG 196

WILLIAM T. EVANS, SR. HEIRS
 DB 418 PG 424

CAROLINA POWER & LIGHT CO.
 EASEMENT
 30.480 (100')



MATCHLINE SEE SHEET UC-12

**PROP. - 12M OF 200MM DI WATER PIPE, PC 2.41MPA (REPLACE EXIST. PVC WATER PIPE AT SAME ALIGNMENT AND ELEVATION)
 6M OF 150MM DI WATER PIPE, PC 2.41MPA
 1- RELOCATE EXIST. FIRE HYDRANT CONNECT USING NECESSARY FITTINGS**

MARY RUTH MARSHALL
 DB 1181 PG 350
 MB 4 PG 96

NORMAN H. PHILLIPS, III
 DB 1871 PG 1068
 MB 4 PG 96

R. T. IMPORTS, INC.
 DB 1680 PG 1065

WILLIAM M. MANGUM, III
 DB 1295 PG 1802
 DB 1972 PG 337

CARDINAL LANES, INC.
 DB 1257 PG 78

DB
 DB
 DB
 MB