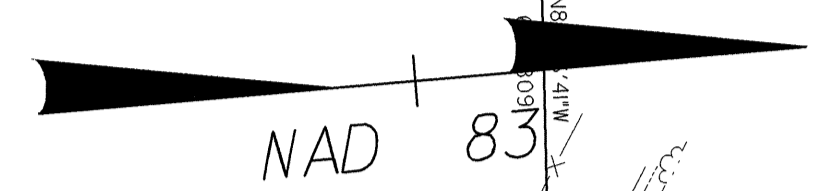


NOTE:
 ALL PROPOSED UTILITY WORK
 SHOWN ON THIS SHEET WILL
 BE DONE BY OTHERS

4

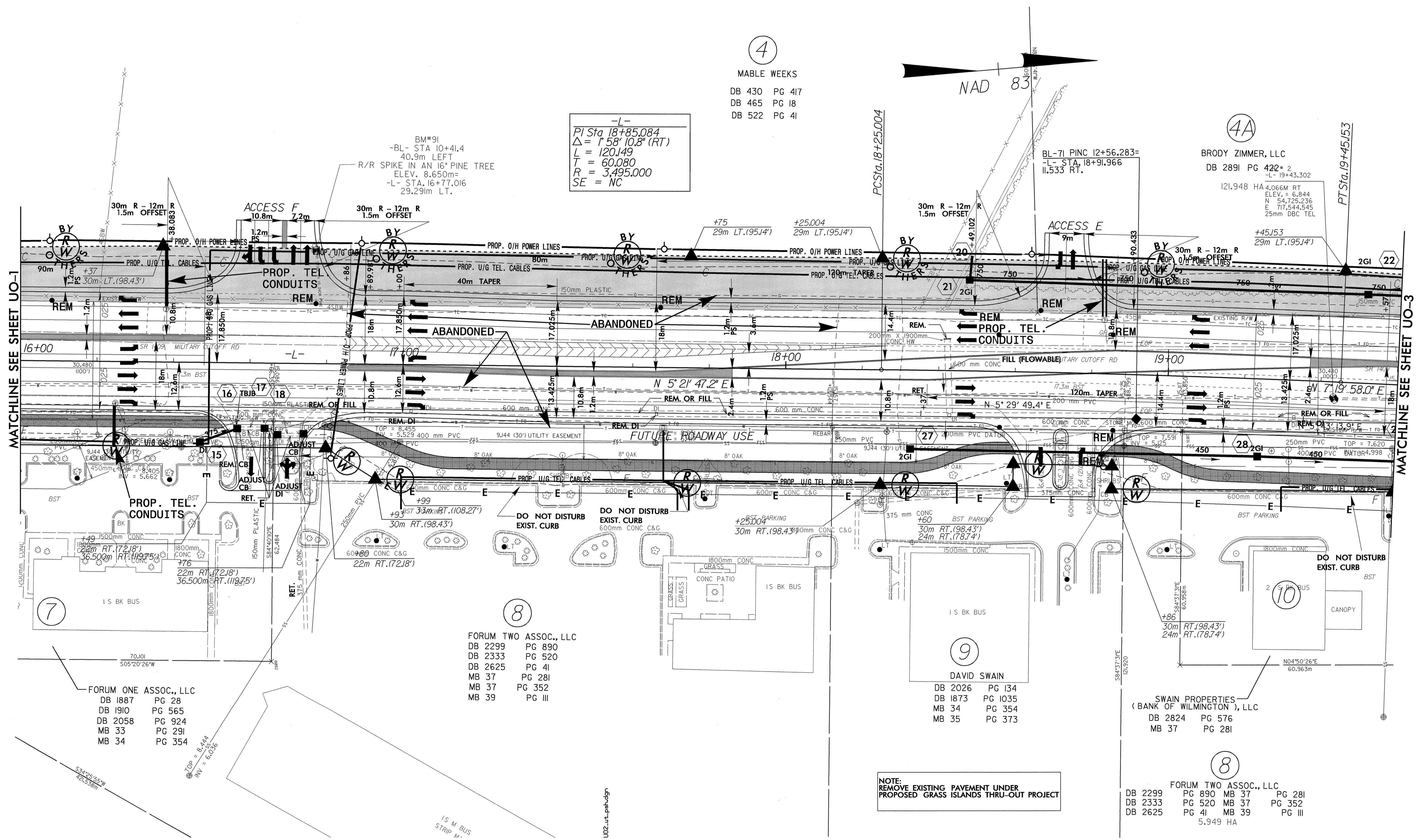
MABLE WEEKS
 DB 430 PG 417
 DB 465 PG 18
 DB 522 PG 41

-L-
 PI Sta 18+85.084
 $\Delta = 1^{\circ}58'10.8''$ (RT)
 L = 120.149
 T = 60.080
 R = 3,495.000
 SE = NC



4A

BRODY ZIMMER, LLC
 DB 2891 PG 422* 2
 -L- 19+43.302
 121.948 HA 4.066M RT
 ELEV. = 6.844
 N = 54,725.236
 E = 717,544.545
 25mm DBC TEL



MATCHLINE SEE SHEET UO-1

MATCHLINE SEE SHEET UO-3

042592
 05-05-2003 10:50
 R:\Utilities\U0-2734-5-U02-ut-pah.dgn
 mbright

U02-ut-pah.dgn

NOTE:
 REMOVE EXISTING PAVEMENT UNDER
 PROPOSED GRASS ISLANDS THRU-OUT PROJECT

FORUM ONE ASSOC., LLC
 DB 1887 PG 28
 DB 1910 PG 565
 DB 2058 PG 924
 MB 33 PG 291
 MB 34 PG 354

FORUM TWO ASSOC., LLC
 DB 2299 PG 890
 DB 2333 PG 520
 DB 2625 PG 41
 MB 37 PG 281
 MB 37 PG 352
 MB 39 PG III

DAVID SWAIN
 DB 2026 PG 134
 DB 1873 PG 1035
 MB 34 PG 354
 MB 35 PG 373

SWAIN PROPERTIES
 (BANK OF WILMINGTON), LLC
 DB 2824 PG 576
 MB 37 PG 281

FORUM TWO ASSOC., LLC
 DB 2299 PG 890 MB 37 PG 281
 DB 2333 PG 520 MB 37 PG 352
 DB 2625 PG 41 MB 39 PG III
 5,949 HA