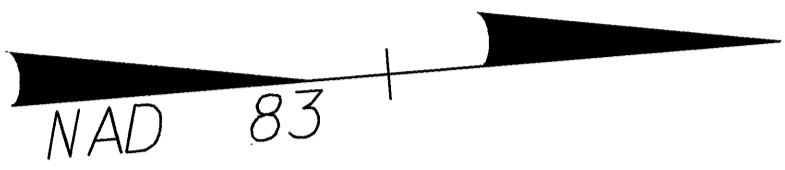
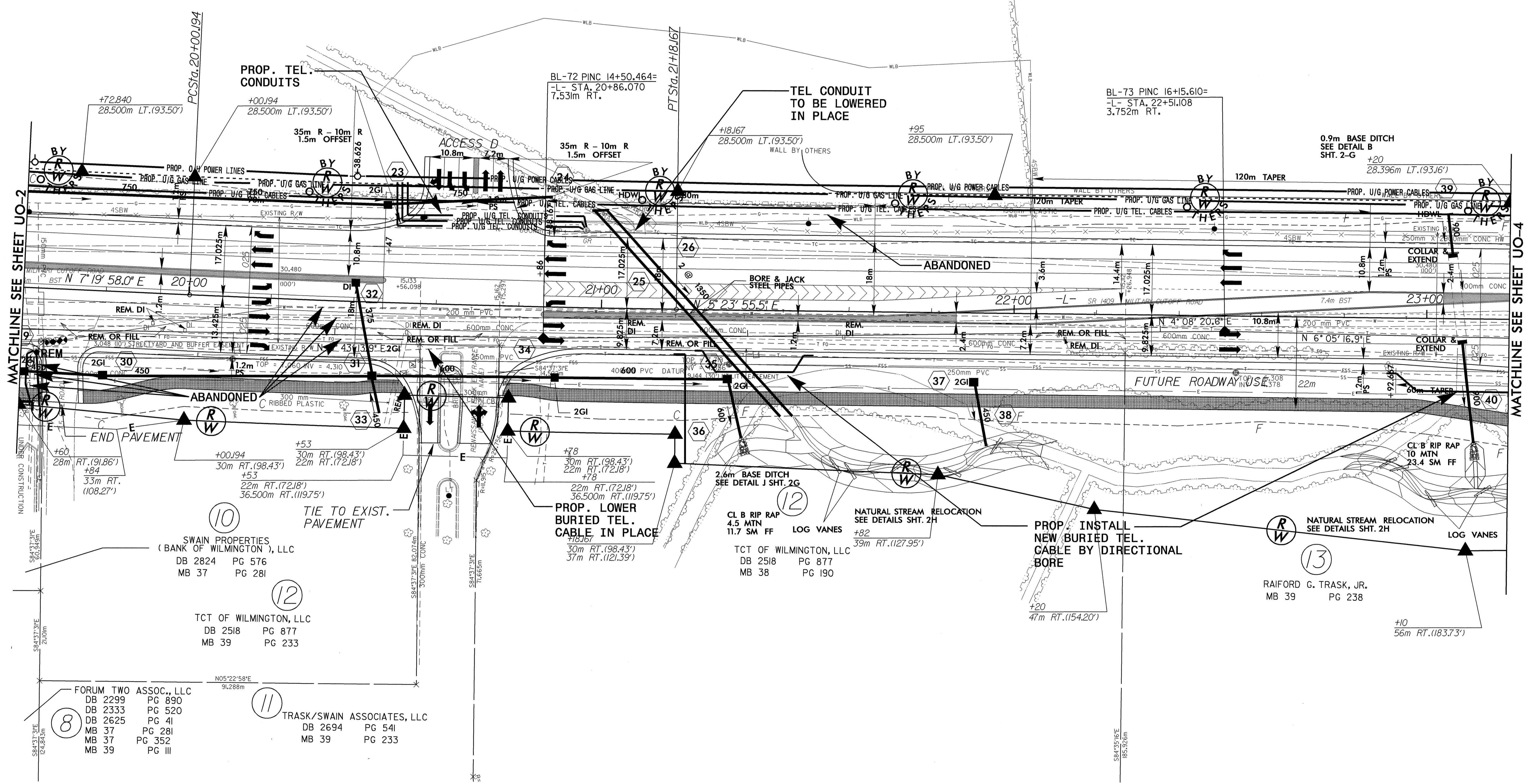


NOTE:
 ALL PROPOSED UTILITY WORK
 SHOWN ON THIS SHEET WILL
 BE DONE BY OTHERS

4A
 BRODY ZIMMER, LLC
 DB 2891 PG 422



-L-
 PI Sta. 20+59.186
 $\Delta = 1^{\circ}56'02.5''$ (LT)
 L = 117.974
 T = 58.992
 R = 3,495.000
 SE = NC



MATCHLINE SEE SHEET UO-2

MATCHLINE SEE SHEET UO-4

10
 SWAIN PROPERTIES
 (BANK OF WILMINGTON), LLC
 DB 2824 PG 576
 MB 37 PG 281

12
 TCT OF WILMINGTON, LLC
 DB 2518 PG 877
 MB 39 PG 233

8
 FORUM TWO ASSOC., LLC
 DB 2299 PG 890
 DB 2333 PG 520
 DB 2625 PG 41
 MB 37 PG 281
 MB 37 PG 352
 MB 39 PG III

11
 TRASK/SWAIN ASSOCIATES, LLC
 DB 2694 PG 541
 MB 39 PG 233

12
 CL B RIP RAP
 4.5 MTN
 11.7 SM FF
 LOG VANES
 TCT OF WILMINGTON, LLC
 DB 2518 PG 877
 MB 38 PG 190

13
 NATURAL STREAM RELOCATION
 SEE DETAILS SHT. 2H
 LOG VANES
 RAIFORD G. TRASK, JR.
 MB 39 PG 238

03-DEC-2003 10:51 R:\ut-2734\pds\1103-ut-by-others.dgn